

Guildford Way Transportation Road Improvements

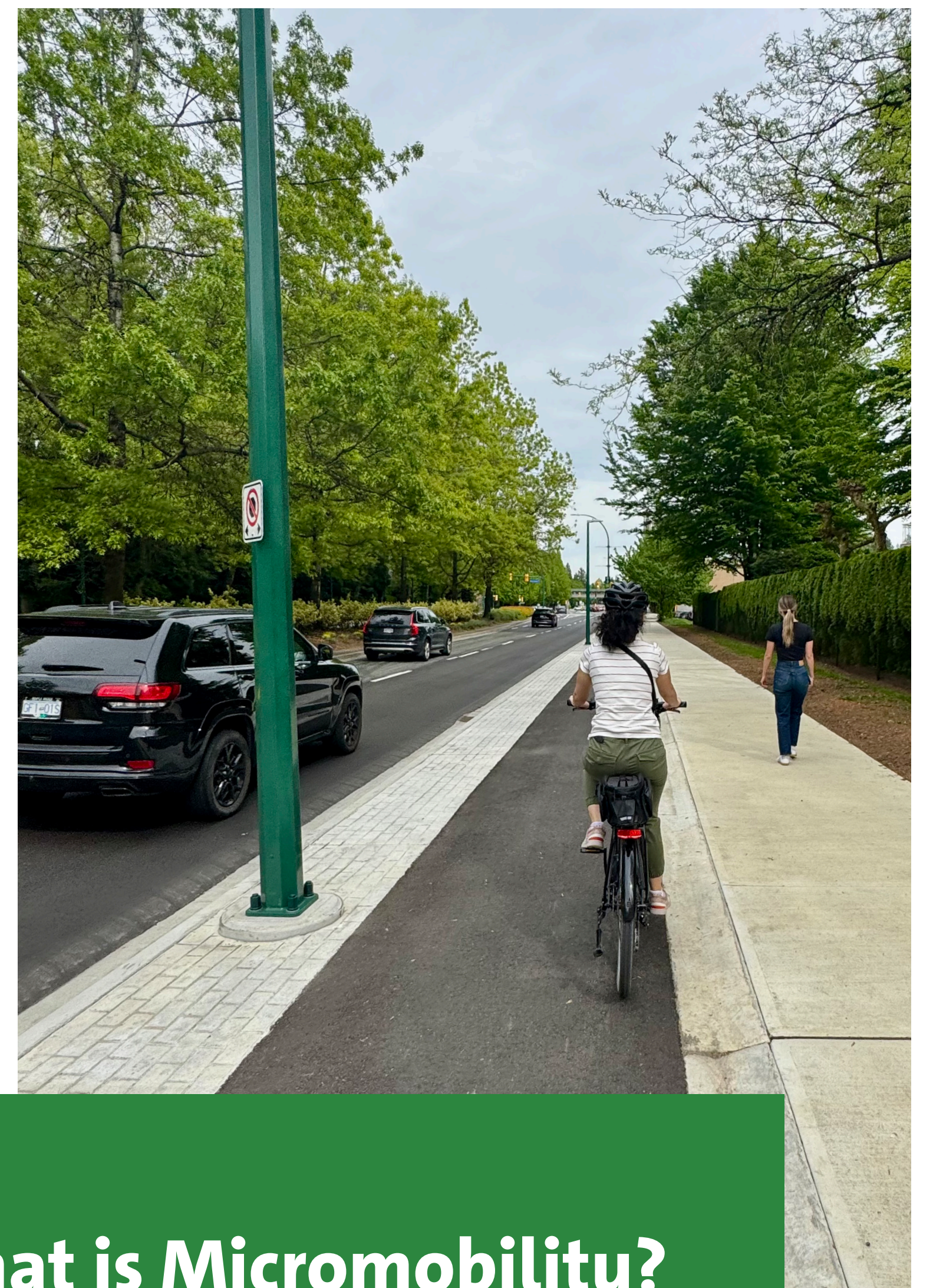
We've upgraded Guildford Way from the Port Moody border to Pinetree Way to make walking, biking and rolling more enjoyable while improving road safety.

Why is this project important?

These upgrades make it easier and safer for people of all ages and abilities to walk, bike, scoot, take transit, or drive between where they live, work, learn, play and shop!

This project will help the City meet its transportation goals for 2050:

- 50% of all trips by walking, micromobility and public transit
- Zero serious traffic-related injuries and fatalities
- Zero transportation greenhouse gas emissions

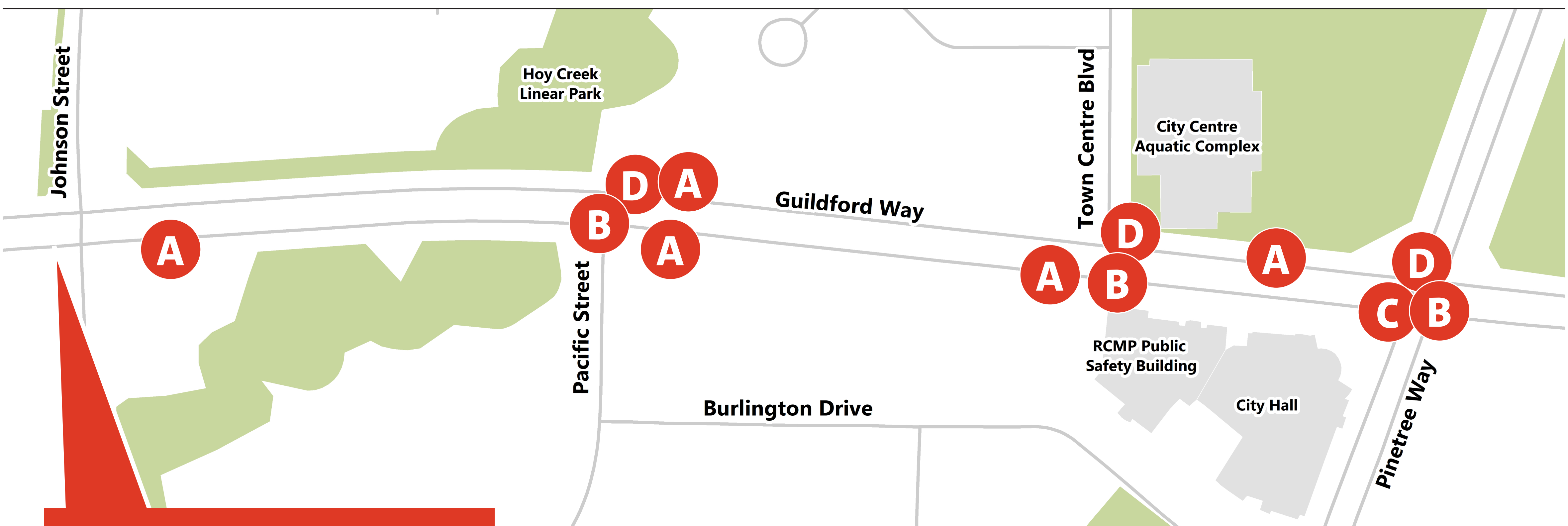


What is Micromobility?

Micromobility refers to affordable, lightweight and low-speed vehicles for transportation or recreation purposes—like bicycles, e-bikes, scooters, and e-scooters.

Phase 2

Project Improvements



Phase 1

In 2023, Guildford Phase 1 was completed from Falcon Drive to Johnson Street, and improvements included:

- Protected micromobility lanes using quick-build concrete curbs
- Improved bus stops that allow the micromobility lanes to pass through

Overall Corridor Features

- Road repaving
- Bicycle signals
- Boulevard beautification and landscaping
- Improved street lighting
- Wider sidewalks with visible and detectable separation between the sidewalk and micromobility lane
- Raised, one-way protected micromobility lanes
- Maintained four vehicle lanes and turn lanes to accommodate people driving and taking transit

Phase 2 Features:

- A** Floating bus stops designed to meet TransLink’s new accessibility guidelines
- B** Traffic signal upgrades and protected intersections
- C** Protected left turn movements—left turns are now only permitted when a left-turn arrow is green
- D** No right turn on red

What is a Floating Bus Stop?

- The bus stop is located between the micromobility lane and the roadway, rather than directly on the sidewalk like traditional bus stops. It 'floats' between these spaces.
- Floating bus stops allow buses to pick up passengers without having to enter the micromobility lane.

Tips for People Walking and Rolling



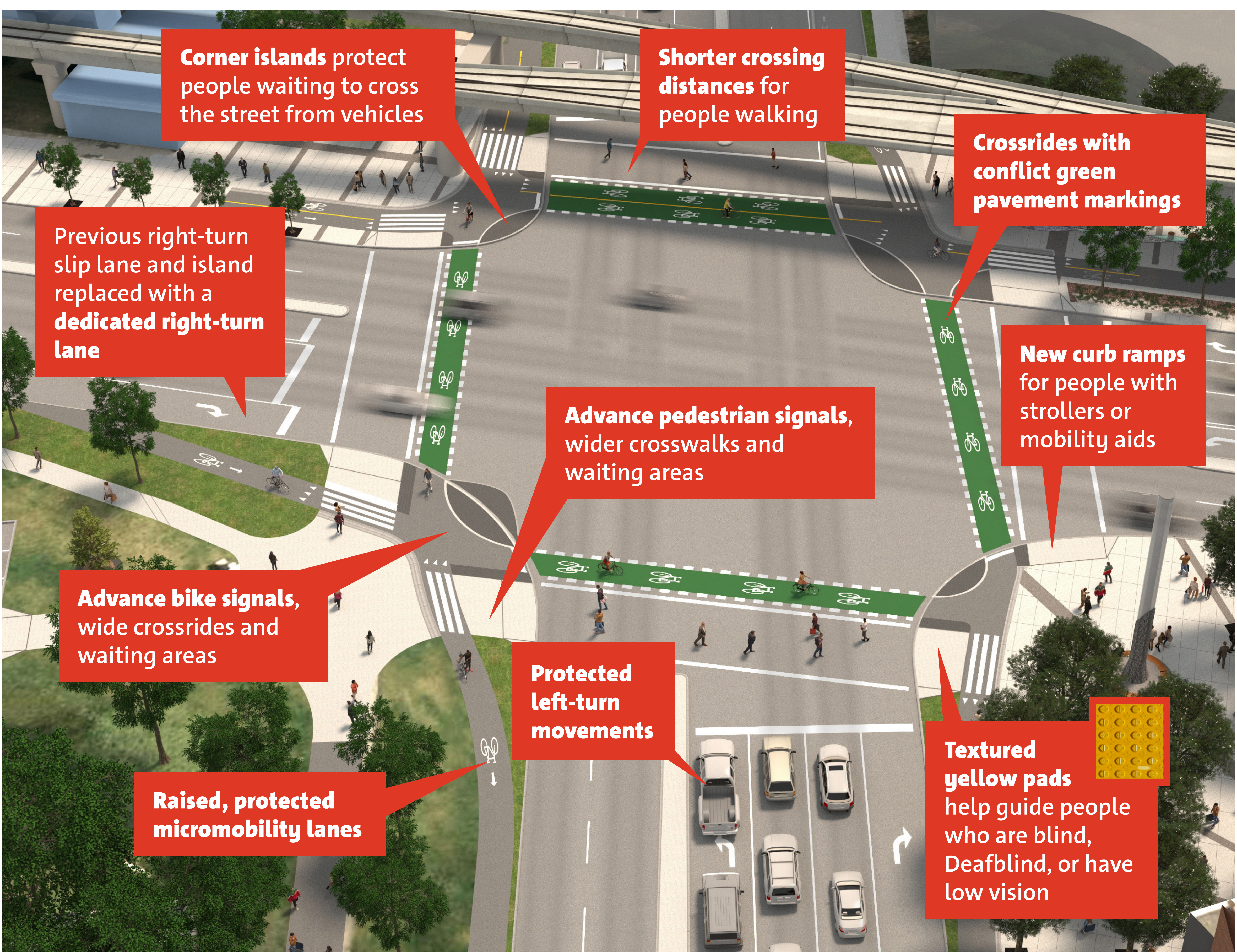
- Cross at marked crosswalks
- Watch for people cycling/scooting
- Avoid standing/waiting in the micromobility lane



- Slow down
- Ride single file
- Watch for people getting on/off of the bus
- Yield/stop for pedestrians in crosswalks

Guildford and Pinetree Protected Intersection

Guildford Way has the first protected intersections in the Tri-Cities that separate people driving, rolling and walking with designated space and signal phasing to improve safety and visibility for all road users.



coquitlam.ca/GuildfordWay

Coquitlam

Accessibility Features

Improved Accessibility Features:



- ✓ **Textured yellow pads** for people who are blind, Deafblind, or have low vision to mark the edge of the roadway, micromobility lane and to show directionality.
- ✓ **Wider curb ramps and waiting areas** for people with strollers or mobility aids.



- ✓ **Improved lighting** along the corridor for better visibility.



- ✓ **Wider sidewalks** to accommodate people of all ages and abilities.



- ✓ **Wave-activated buttons** at signalized intersections.



- ✓ **Advance pedestrian signals** with countdown timers



- ✓ **Larger bus stop waiting areas** to give people using mobility aids more space to get on and off the bus safely.



- ✓ **Micromobility lanes** separate pedestrians, vehicles and micromobility devices.

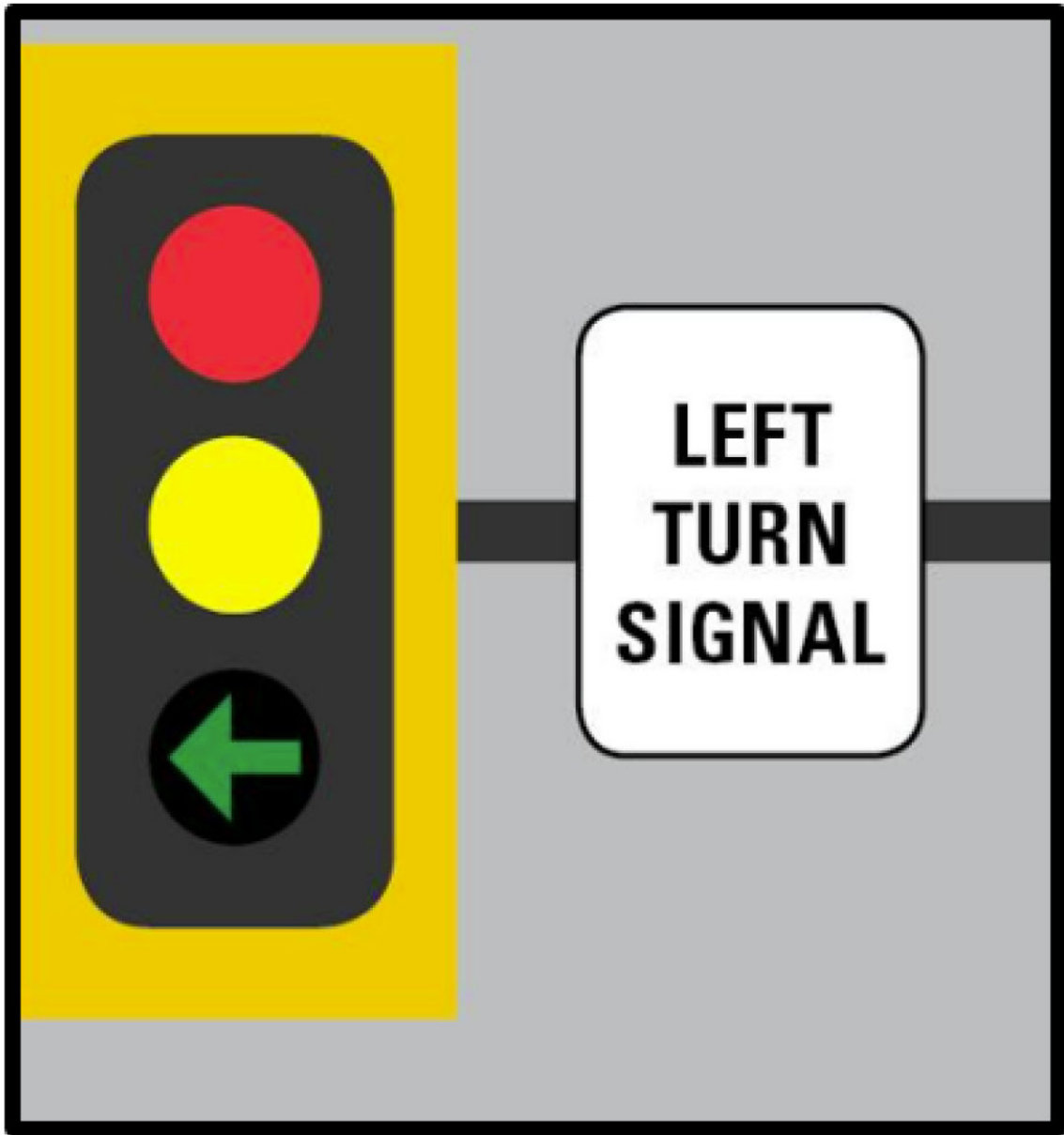
How to Navigate the Guildford and Pinetree Intersection

Guildford and Pinetree



Drivers – making a right turn?
You must wait for a green light.

Guildford and Pinetree



Drivers – making a left turn?
You must wait for the green arrow.



People on bikes and on scooters, please pay
attention at intersections and driveways,
and watch for vehicles turning.



Cyclists, when turning left, follow the
direction of the pavement markings.

How to Travel along Guildford Way



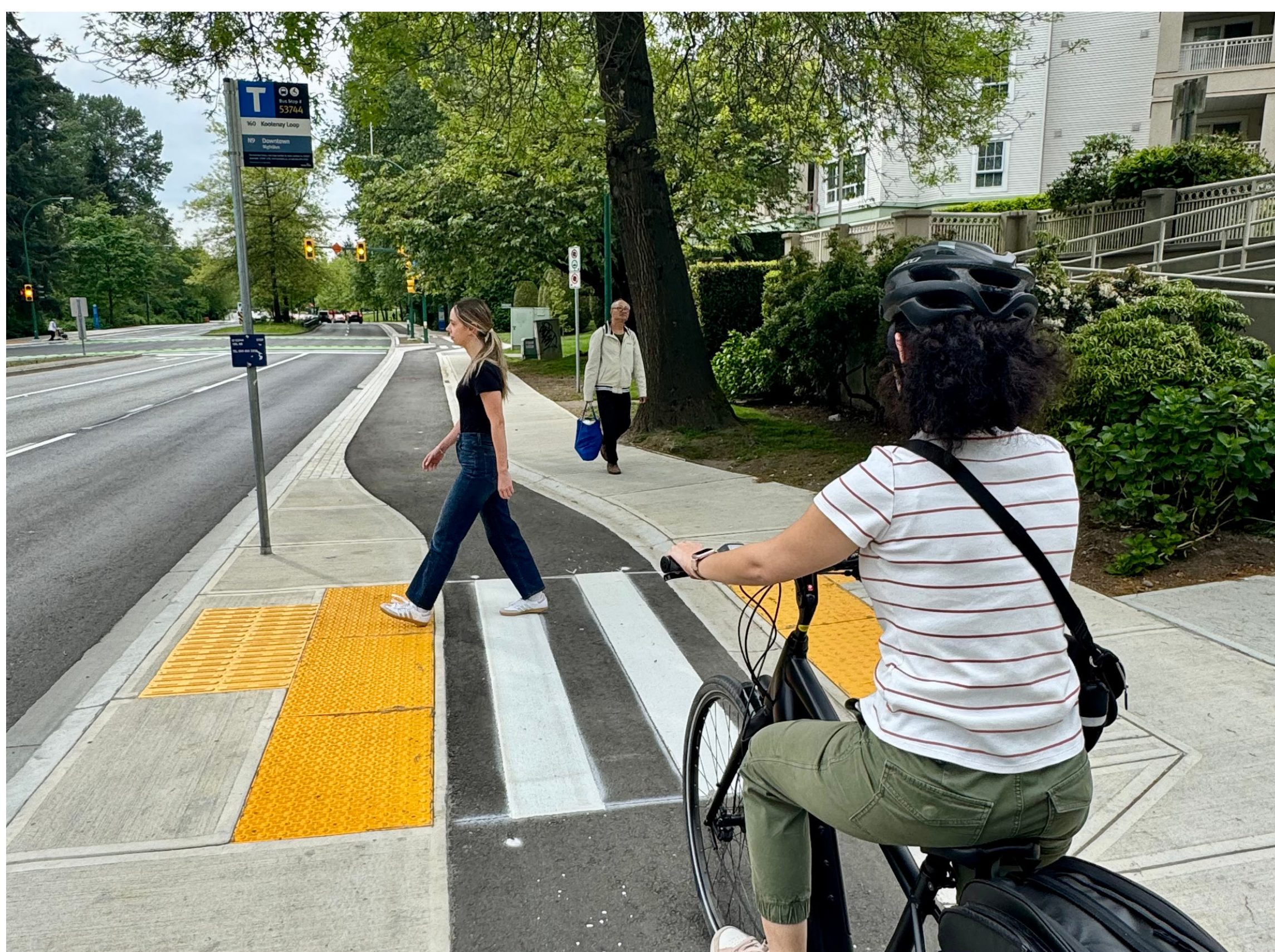
Drivers must yield to people walking and rolling at intersections and at driveways.



Guildford Way is designed to reduce conflicts between different users, making it safer and more comfortable to walk, bike, scooter, and drive.



Ride in the same direction as traffic, except where pavement markings indicate otherwise.



People biking or scooting must yield to people at crosswalks including at bus stops.

coquitlam.ca/GuildfordWay

Coquitlam

Project Funding

*Thank you to the following agencies
for their generous contributions:*

