

BENCHMARK:
GEODETIC ELEVATIONS ARE DERIVED FROM
G.P.S. OBSERVATION AT CUX 8074,
ELEV. = 109.441m
DATUM IS [CGVD28 (GVRD 2018)]

GENERAL NOTES:

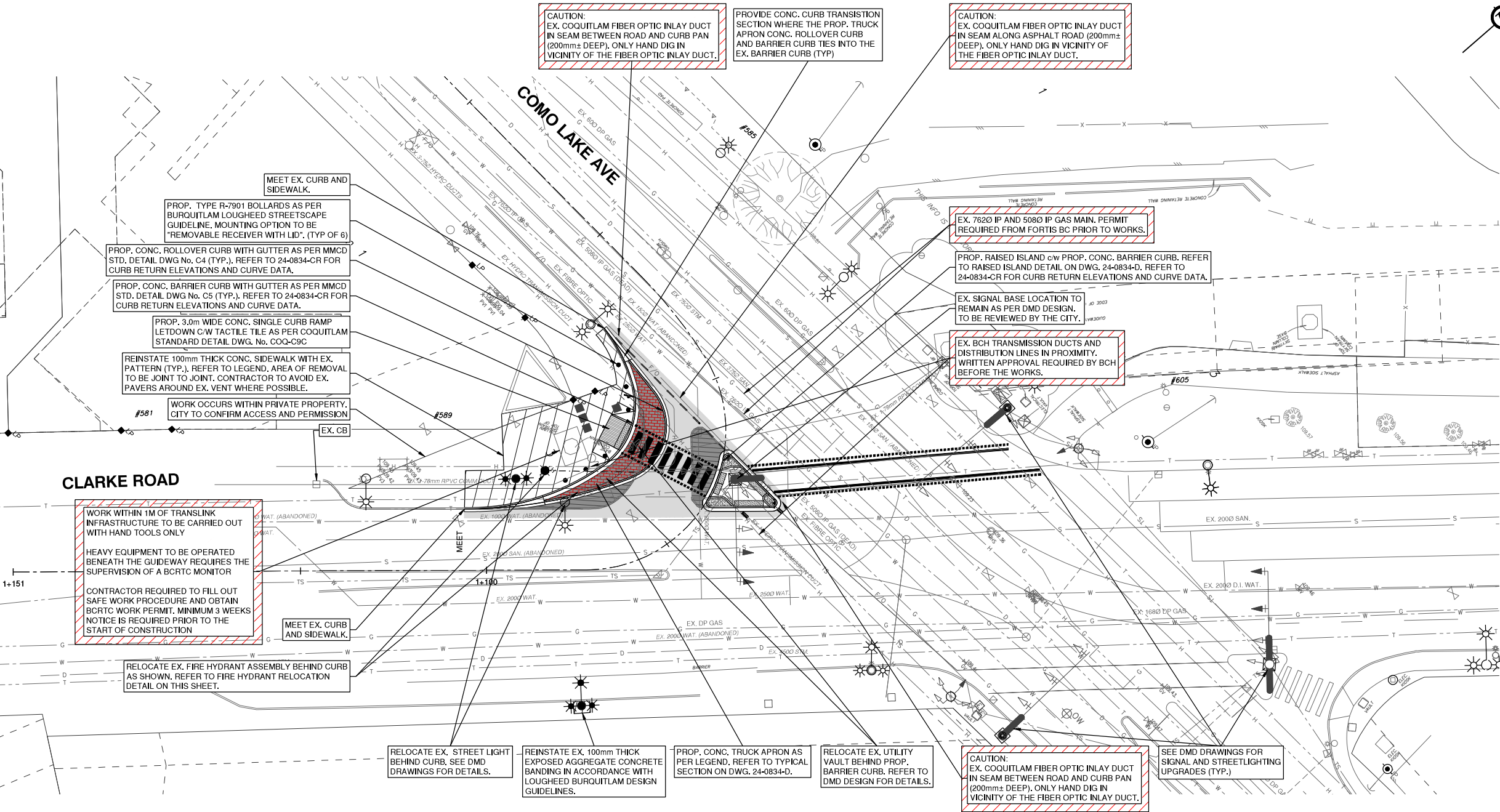
- THE PROPOSED WORKS WILL TAKE PLACE WITHIN LIMIT 1 & 2 OF TRANSLINK SKYTRAIN'S LIMITS OF APPROACH AND WILL REQUIRE SPECIFIC CONDITIONS, PRECAUTIONS, AND AUTHORIZATION FROM TRANSLINK TO UNDERTAKE THE PROPOSED WORKS.
- FORTIS BC HIGH PRESSURE GAS PIPELINES ARE IN PROXIMITY OF PROPOSED WORKS. A FORTIS BC GAS PERMIT IS REQUIRED.
- BC HYDRO TRANSMISSION DUCTS AND DISTRIBUTION LINES IN PROXIMITY. WRITTEN APPROVAL REQUIRED BY BCH BEFORE THE WORKS.
- LOCATION OF EXISTING UTILITIES SHOWN ARE APPROXIMATE ONLY AND SHOULD BE CONFIRMED BY THE CONTRACTOR PRIOR TO CONSTRUCTION THROUGH PRE-LOCATES AND MANUAL DIGGING AS REQUIRED.

LEGEND:

- EX. ROAD RECONSTRUCTION ZONE:**
- REMOVE EXISTING ASPHALT.
 - REMOVE EXISTING BASE GRAVELS AS REQUIRED TO ACCOMMODATE PROP. GRADES. REGRADE AND RECOMPACT EX. BASE GRAVELS TO 95% MODIFIED PROCTOR DENSITY.
 - REPAVE WITH:
 - 50mm - MMCD UPPER COURSE #1 ASPHALT IN ONE LIFT
 - 75mm (MIN.) - MMCD LOWER COURSE #1 ASPHALT IN ONE LIFT, MATCH EX. ASPHALT THICKNESS IF THICKER THAN 75mm.
- FULL DEPTH ROAD WIDENING (WHERE SHOWN ON PLAN):**
- 50mm - MMCD UPPER COURSE #1 ASPHALT IN ONE LIFT.
 - 75mm (MIN.) - MMCD LOWER COURSE #1 ASPHALT IN ONE LIFT, MATCH EX. ASPHALT THICKNESS IF THICKER THAN 75mm.
 - 125mm - 25mm MINUS CRUSHED GRANULAR BASE COMPACTED TO 95% MPD
 - 300mm - 75mm MINUS CRUSHED GRANULAR SUBBASE COMPACTED TO 95% MPD
- TRUCK APRON:**
- 200mm THICK STAMPED AND COLORIZED CONCRETE USING DAVID BRICK RED-RIVER ROCK PATTERN. (TYP.)
- 100mm THICK CONCRETE SIDEWALK STREETScape REINSTATEMENT TO MATCH ORIGINAL CONDITIONS:**
- IN ACCORDANCE WITH LOUGHEED BURQUITLAM DESIGN GUIDELINES
 - SAWCUT CONC. SIDEWALK IN 0.36m X 0.36m SQUARE PATTERN WITH EXPOSED AGGREGATE CONCRETE BANDING.
 - EX. PAVERS AROUND EX. VENT TO BE PROTECTED AND MAINTAINED.
 - REMOVAL AND REINSTATEMENT TO BE COMPLETED JOINT TO JOINT WHERE POSSIBLE.

CLARKE ROAD

COMO LAKE AVE



TIE RELOCATED FIRE HYDRANT BACK TO EX. TIE RODS AT TIE-IN POINT WITH TIE-RODS. SEE WATER WORKS NOTE #1.

OPTIONAL REVERSE ACTING CONCRETE THRUST BLOCK (RATB). SEE WATER WORKS NOTE #2.

REMOVE EX. 1500 BEND AND TIE PROP. 1500 DI WTR PIPE INTO EX. 1500 DI WTR PIPE WITH 1500 DI ROBAR COUPLING. REMOVE EX. THRUST BLOCK IF PRESENT.

RELOCATE EX FIRE HYDRANT ASSEMBLY

EX. FIRE HYDRANT

REMOVE EX. 1500 DI WTR PIPE AND 1500 BEND

FIRE HYDRANT RELOCATION DETAIL

NOT TO SCALE

WATER WORKS NOTES:

- CONTRACTOR TO CONFIRM IF THE EX. 1500 BEND LOCATED AT THE TIE-IN POINT HAS BEEN TIED BACK TO THE EX. 1500 GATE VALVE WITH TIE-RODS.
- IF THE EX. 1500 BEND HAS NOT BEEN TIED BACK TO THE EX. 1500 GATE VALVE WITH TIE-RODS, THEN TIE THE RELOCATED FIRE HYDRANT BACK TO THE PROP. RATB WITH GALVANIZED TIE-RODS.
- EX. THRUST BLOCK TO BE REMOVED IF PRESENT.

PROP. CONCRETE RATB

UNDISTURBED SOIL

200 TIE-RODS c/w NUTS AND WASHERS (MIN. 2-TIE RODS)

PROP. 1500 CL 50 DI WTR

RELOCATED FIRE HYDRANT TIED BACK TO PROP. TIE IN POINT WITH 200 TIE-RODS

RELOCATED FIRE HYDRANT TIED BACK TO PROP. TIE IN POINT WITH 200 TIE-RODS

25 STYROFOAM AROUND PIPE BARREL

PROP. CONCRETE RATB

300 MIN.

2500

500

400

75 CL

CONCRETE ANCHOR WALL 25MPa

CONCRETE REINFORCED 150 @ 300

E.W. E.F. EXCAVATION FOR ANCHOR

WALL SHALL BE BY HAND. GROUND

IN CONTACT WITH WALL SHALL NOT

BE DISTURBED

PLAN

SECTION

OPTIONAL REVERSE THRUST BLOCK (RATB)

NOT TO SCALE

Edge of pavement	Hydrant	Sanitary service	Hydro Guy Wire
Watermain and valve	Water air valve	Sanitary cleanout	Hydro Kiask
Drainage ditch	Water blowoff	Utility pole (joint pole)	Vegetation Canifer
Sanitary sewer, MH	Water service	Utility pole with light	Vegetation Deciduous
Sanitary sewer, S	Catch basin, top inlet	Streetlight, dovetail	Vegetation Shrub
Sanitary sewer, SFM	Catch basin, side inlet	Streetlight, post top	Survey Traverse Hub
Gasmain and valve	Catch basin, round	Comb signal pole	Survey Iron Pin
Hydro duct, MH	Drainage service	Traffic signal pole	Survey Lead Plug
Telephone duct, MH	Drainage cleanout	Junction box	Survey Monument

No.	Date	By	Revisions
5	07/18/2025	PD	ISSUED FOR TENDER
4	06/11/2025	PD	ISSUED FOR TENDER
3	05/20/2025	SL	DRAFT 100% SUBMISSION - ISSUED FOR REVIEW
2	04/11/2025	SL	90% SUBMISSION - ISSUED FOR REVIEW
1	03/21/2025	GZ	PRELIMINARY DESIGN SUBMISSION

Design by	Date
GZ	02/14/2025
Drawn by	Date
GZ	02/14/2025
Checked by	Date
WC	03/21/2025
Approved by	Date
PD	03/21/2025

BINNIE
The people behind your infrastructure.
TEL 604 420 1721 BINNIE.com

Coquitlam
Engineering & Public Works
3000 Guildford Way, Coquitlam, B.C. V3B 7N2

Scale 1:250
horiz. 01
Scale 1:25
vert. 05
Eng. Project No. 24-0834

Project **CLARKE RD AND COMO LAKE AVE INTERSECTION IMPROVEMENTS**
Description **ROADWORKS**
File **24-0834-R1**
Rev. **5**



EGBC PERMIT No. 1001128

NOT FOR CONSTRUCTION

EX. SIDEWALK RECONSTRUCTION ZONE:

- REMOVE EXIST. CONCRETE SIDEWALK.
- ADD GRANULAR BASE AS REQUIRED. REGRADE AND RECOMPACT TO 95% MODIFIED PROCTOR DENSITY.
- REINSTATE WITH 100mm THICK CONCRETE SIDEWALK. MATCH EX. SIDEWALK COLOR AND PATTERN (TYP.) IN ACCORDANCE WITH LOUGHEED BURQUITLAM DESIGN GUIDELINES (SAWCUT CONC. SIDEWALK IN 0.36m X 0.36m SQUARE PATTERN WITH EXPOSED AGGREGATE CONCRETE BANDING)

PROP. CONC. BARRIER CURB WITH GUTTER AS PER MMCD STD. DETAIL DWG No. C5

PROP. CONC. TRUCK APRON VARIES

PROP. EXPANSION JOINT

PROP. CONC. ROLLOVER CURB WITH GUTTER AS PER MMCD STD. DETAIL DWG No. C4

PROP. EXPANSION JOINT (TYP.)

PROP. REVERSE CONC. BARRIER CURB WITH GUTTER AS PER MMCD STD DWG No. C5

REMOVE EX. RAISED ISLAND VARIES

PROP. RAISED ISLAND VARIES

PROP. 100mm THICK BRUSHED FINISHED CONCRETE

PROP. CONCRETE CURB ON GRAVEL BASE AS PER COQUITLAM STANDARD DETAIL DWG. No. COQ-C6

PROP. MEDIAN INFILL TO BE 100mm THICK BRUSHED FINISHED CONCRETE

0.5m CURB CONSTRUCTION ZONE

SEE TYPICAL PAVEMENT JOINT DETAIL ON THIS DRAWING

CAUTION:
EX. COQUITLAM FIBER OPTIC INLAY DUCT IN SEAM BETWEEN ROAD AND GUTTER (200mm± DEEP). ONLY HAND DIG IN VICINITY OF FIBER OPTIC INLAY DUCT (TYP.)

ROAD WIDENING ZONE:

- SAW CUT AND REMOVE EX. CONC. CURB AND EX. CONC. SIDEWALK. EXCAVATE TO DESIGN SUBGRADE AND RECOMPACT SUBGRADE TO 95% MODIFIED DENSITY. PROOF ROLL EXPOSED SURFACE AND OVEREXCAVATE AS DIRECTED BY CA.
- RECONSTRUCT ZONE WITH:
 - 200mm THICK COLORED STAMPED CONCRETE
 - 150mm - 25mm MINUS CRUSHED GRANULAR BASE COMPACTED TO 95% MODIFIED PROCTOR DENSITY.
 - 300mm - 75mm MINUS CRUSHED GRANULAR SUB-BASE COMPACTED TO 95% MODIFIED PROCTOR DENSITY
 - 75mm MINUS CRUSHED GRANULAR SUB-BASE COMPACTED TO 95% MODIFIED PROCTOR DENSITY AS REQUIRED FOR OVER EXCAVATION AS DIRECTED BY CA.

PROP. CONCRETE TRUCK APRON CONSTRUCTION ZONE:

- SAW CUT AND REMOVE ASPHALT. EXCAVATE TO DESIGN SUBGRADE AND RECOMPACT SUBGRADE TO 95% MODIFIED DENSITY. PROOF ROLL EXPOSED SURFACE AND OVER EXCAVATE AS DIRECTED BY CA.
- RECONSTRUCT ZONE WITH:
 - 200mm THICK COLORED STAMPED CONCRETE
 - 150mm - 25mm MINUS CRUSHED GRANULAR BASE COMPACTED TO 95% MODIFIED PROCTOR DENSITY
 - 75mm MINUS CRUSHED GRANULAR SUB-BASE COMPACTED TO 95% MODIFIED PROCTOR DENSITY AS REQUIRED FOR OVER EXCAVATION AS DIRECTED BY CA.

EX. ROAD RECONSTRUCTION ZONE:

- REMOVE EXISTING ASPHALT.
- REMOVE EXISTING BASE GRAVELS AS REQUIRED TO ACCOMMODATE PROP. GRADES. REGRADE AND RECOMPACT EX. BASE GRAVELS TO 95% MODIFIED PROCTOR DENSITY.
- REPAVE WITH:
 - 50mm - MMCD UPPER COURSE #1 ASPHALT IN ONE LIFT
 - 75mm (MIN.) - MMCD LOWER COURSE #1 ASPHALT IN ONE LIFT. MATCH EX. ASPHALT THICKNESS IF THICKER THAN 75mm.

ROAD WIDENING ZONE:

- SAW CUT AND REMOVE EX. ASPHALT AND EX. RAISED ISLAND. EXCAVATE TO DESIGN SUBGRADE AND RECOMPACT SUBGRADE TO 95% MODIFIED DENSITY. PROOF ROLL EXPOSED SURFACE AND OVEREXCAVATE AS DIRECTED BY CA.
- RECONSTRUCT ZONE WITH:
 - 50mm - UPPER COURSE #1 ASPHALT
 - 75mm (MIN.) - LOWER COURSE #1 ASPHALT. MATCH EX. ASPHALT THICKNESS IF THICKER THAN 75mm
 - 125mm - 25mm MINUS CRUSHED GRANULAR BASE COMPACTED TO 95% MODIFIED PROCTOR DENSITY.
 - 300mm - 75mm MINUS CRUSHED GRANULAR SUB-BASE COMPACTED TO 95% MODIFIED PROCTOR DENSITY
 - 75mm MINUS CRUSHED GRANULAR SUB-BASE COMPACTED TO 95% MODIFIED PROCTOR DENSITY AS REQUIRED FOR OVER EXCAVATION AS DIRECTED BY CA.

REMOVE EXISTING CONC. CURB AND RE-INSTATE WITH PROP. REVERSE CONC. BARRIER CURB WITH GUTTER AS PER MMCD STD DWG No. C5

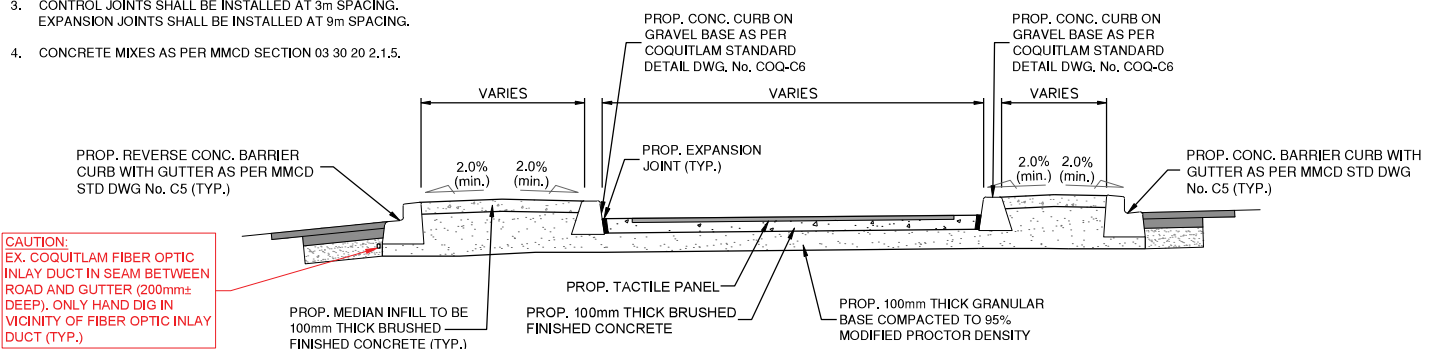
CURB CONSTRUCTION ZONE:

- SAW CUT AND REMOVE EXISTING ASPHALT. EXCAVATE TO DESIGN SUBGRADE AND RECOMPACT SUBGRADE TO 95% MODIFIED DENSITY.
- RECONSTRUCT ZONE WITH:
 - 50mm - UPPER COURSE #1 ASPHALT
 - 75mm (MIN.) - LOWER COURSE #1 ASPHALT. MATCH EX. ASPHALT THICKNESS IF THICKER THAN 75mm.
 - 125mm - 25mm MINUS CRUSHED GRANULAR BASE COMPACTED TO 95% MODIFIED PROCTOR DENSITY.

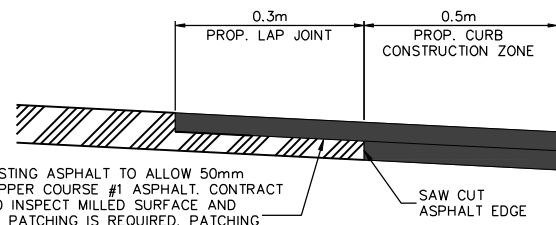
PROP. CONCRETE TRUCK APRON NOTES:

- SHALL BE 200mm THICK STAMPED AND COLORIZED CONCRETE USING DAVID BRICK RED-RIVER ROCK PATTERN.
- CONCRETE SHALL HAVE A MIN. 28 DAY COMPRESSIVE STRENGTH OF 32 MPa.
- CONTROL JOINTS SHALL BE INSTALLED AT 3m SPACING. EXPANSION JOINTS SHALL BE INSTALLED AT 9m SPACING.
- CONCRETE MIXES AS PER MMCD SECTION 03 30 20 2.1.5.

TYPICAL SECTION
NOT TO SCALE

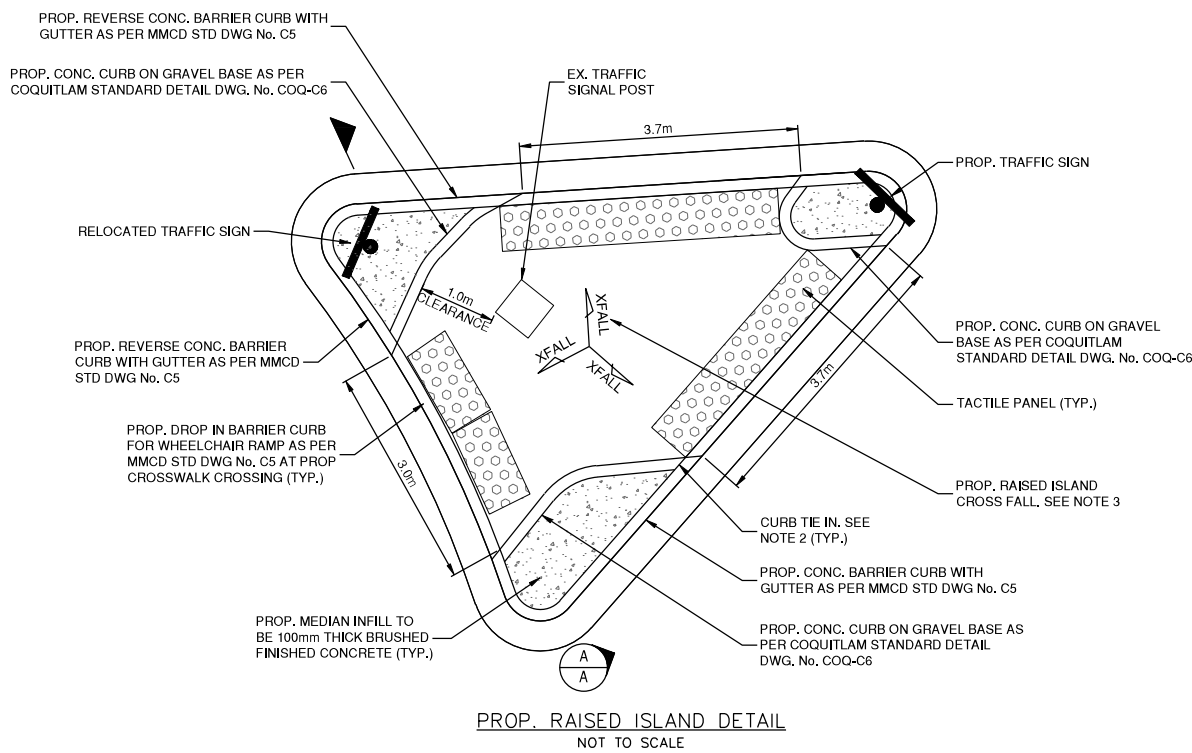


TYPICAL PROP. RAISED ISLAND SECTION A-A
NOT TO SCALE



SURFACE MILL EXISTING ASPHALT TO ALLOW 50mm OVERLAY USING UPPER COURSE #1 ASPHALT. CONTRACT ADMINISTRATOR TO INSPECT MILLED SURFACE AND DETERMINE IF ANY PATCHING IS REQUIRED. PATCHING TO BE MINIMUM 75mm THICK OR MATCH EXISTING ASPHALT THICKNESS (WHICHEVER IS GREATER).

TYPICAL PAVEMENT JOINT DETAIL
NOT TO SCALE



BENCHMARK:
GEODETIC ELEVATIONS ARE DERIVED FROM G.P.S. OBSERVATION AT CUX 8074, ELEV. = 109.441M
DATUM IS [CGVD28 (GVRD 2018)]

NOTES:

- TACTILE PANELS TO BE ADA SOLUTIONS CAST IN PLACE. REPLACEABLE PANELS. TACTILE PANEL TO BE COLOUR YELLOW. PANELS TO BE 600mm DEEP WITH INSTALLED LENGTHS MATCHING THE WIDTH OF RAMP OPENING. ADJUST INDIVIDUAL PANELS AS NECESSARY TO MATCH THE RADIUS OF MEDIAN WHERE APPROPRIATE.
- ROUND AND SMOOTHEN EDGE OF CONCRETE BARRIER CURB TO PROVIDE A SMOOTH TRANSITION AT CURB TIE IN.
- MINIMUM CROSS FALL TO BE 2.0%



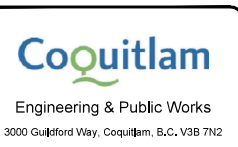
EGBC PERMIT No. 1001128

NOT FOR CONSTRUCTION

Edge of pavement	Hydrant	Sanitary service	Hydro Guy Wire
Watermain and valve	Water air valve	Sanitary cleanout	Hydro Kiosk
Drainage sewer, MH	Water blowoff	Utility pole(joint pole)	Vegetation Canifer
Drainage ditch	Water service	Utility pole with light	Vegetation Deciduous
Sanitary sewer, MH	Catch basin, top inlet	Streetlight, dovetail	Vegetation Shrub
Sanitary forcemain	Catch basin, side inlet	Streetlight, post top	Survey Traverse Hub
Gasmain and valve	Catch basin, round	Comb signal pole	Survey Iron Pin
Hydro duct, MH	Drainage service	Traffic signal pole	Survey Lead Plug
Telephone duct, MH	Drainage cleanout	Junction box	Survey Monument

No.	Date	By	Revisions
4	07/18/2025	PD	REISSUED FOR TENDER
3	06/11/2025	PD	ISSUED FOR TENDER
2	05/20/2025	SL	DRAFT 100% SUBMISSION - ISSUED FOR REVIEW
1	04/11/2025	SL	90% SUBMISSION - ISSUED FOR REVIEW

Design by	Date
OT	03/21/2025
Drawn by	Date
OT	03/21/2025
Checked by	Date
WC	03/21/2025
Approved by	Date
PD	03/21/2025



Scale	1:250	Scale	1:250
horiz.	02	vert.	05
Sheet	02	of	05
Eng. Project No.	24-0834		

Project	CLARKE RD AND COMO LAKE AVE INTERSECTION IMPROVEMENTS
Description	TYPICAL SECTIONS AND DETAILS
File	24-0834-D
REV.	4

BENCHMARK:
GEODETIC ELEVATIONS ARE DERIVED FROM
G.P.S. OBSERVATION AT CUX 8074,
ELEV. = 109.441M
DATUM IS [CGVD28 (GVRD 2018)]

KEY NOTES - PAVEMENT MARKING

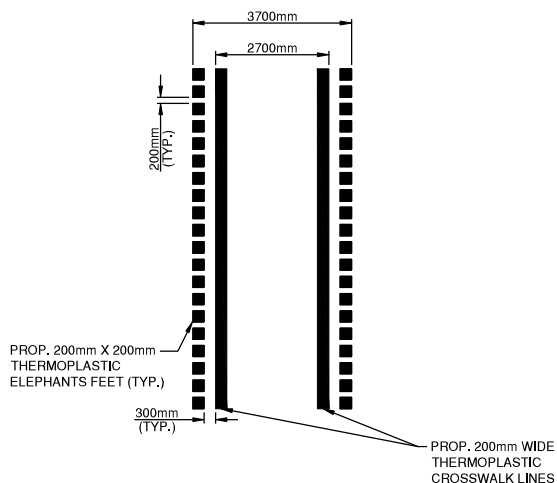
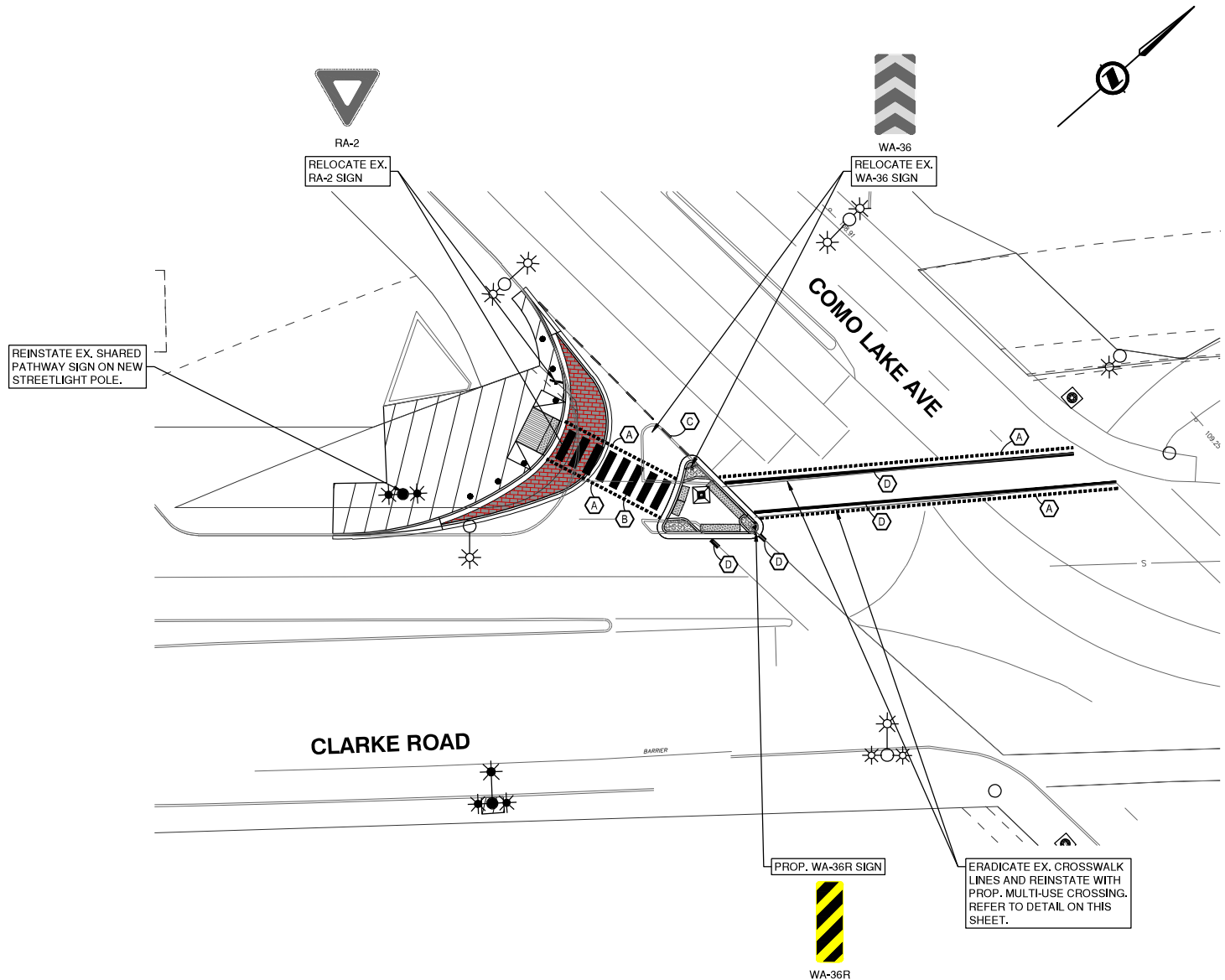
- A NEW 200mm WIDE ELEPHANTS FEET BICYCLE CROSSING LINES (2:2) AS PER MUTCD FIGURE C1-3.
 - B NEW 2.5m WIDE ZEBRA CROSSWALK AS PER MUTCD FIGURE C1-3.
 - C NEW 100mm WIDE SINGLE DASHED WHITE LINE (1:1) AS PER MUTCD FIGURE C1-1.
 - D REINSTATE 200mm WIDE SINGLE SOLID WHITE CROSSWALK LINES AS PER MUTCD FIGURE C1-3.
- *ALL PAVEMENT MARKINGS THERMOPLASTIC

LEGEND

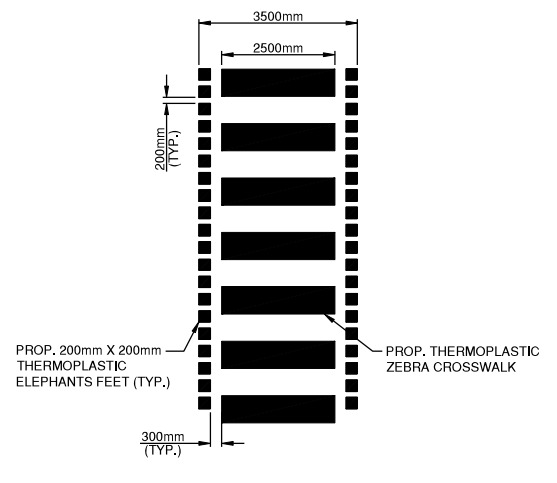
- PROPOSED SIGN - SHOWN IN COLOR
RB-55
- EXISTING SIGN - SHOWN IN GRAY
RB-55R

GENERAL NOTES - PAVEMENT MARKING

- ALL PAVEMENT MARKINGS TO BE AS PER THE CURRENT EDITION OF THE T.A.C. MANUAL OF UNIFORM TRAFFIC CONTROL DEVICES FOR CANADA (M.U.T.C.D.).
- REFER TO M.U.T.C.D FIGURE C1-1 FOR PAVEMENT MARKINGS WIDTHS, SPACING AND COLOUR.
- NEW PAVEMENT MARKINGS TO BE THERMOPLASTIC.
- EXISTING SIGNS NOT PERTINENT TO NEW ROAD SHALL BE RETURNED TO CITY OF COQUITLAM WORKS YARD.



PROP. MULTI-USE CROSSING WITH TWIN PARALLEL LINE CROSSWALK DETAIL
SCALE: N.T.S.



PROP. MULTI-USE CROSSING WITH ZEBRA CROSSWALK DETAIL
SCALE: N.T.S.

0 10m
H 1:250
V 1:25
1m

DISCLAIMER:
This drawing must not be reproduced without the written permission of R.F. Binnie & Associates Ltd.
This drawing is not to be used for construction unless it is stamped 'ISSUED FOR CONSTRUCTION' and signed by R.F. Binnie & Associates Ltd. It is the contractor's responsibility to ensure that he is in possession of the latest revision of this drawing.

Edge of pavement	Hydrant	Sanitary service	Hydro Guy Wire
Watermain and valve	Water air valve	Sanitary cleanout	Hydro Kiosk
Drainage sewer, MH	Water blowoff	Utility pole (joint pole)	Vegetation Canifer
Drainage ditch	Water service	Utility pole with light	Vegetation Deciduous
Sanitary sewer, MH	Catch basin, top inlet	Streetlight, dovetail	Vegetation Shrub
Sanitary forcemain	Catch basin, side inlet	Streetlight, post top	Survey Traverse Hub
Gasmain and valve	Catch basin, round	Comb signal pole	Survey Iron Pin
Hydro duct, MH	Drainage service	Traffic signal pole	Survey Lead Plug
Telephone duct, MH	Drainage cleanout	Junction box	Survey Monument

No.	Date	By	Revisions
4	07/18/2025	PD	REISSUED FOR TENDER
3	06/11/2025	PD	ISSUED FOR TENDER
2	05/20/2025	SL	DRAFT 100% SUBMISSION - ISSUED FOR REVIEW
1	04/11/2025	SL	90% SUBMISSION - ISSUED FOR REVIEW

Design by	Date
OT	03/21/2025
Drawn by	Date
OT	03/20/2025
Checked by	Date
WC	03/21/2025
Approved by	Date
PD	03/21/2025



Scale	1:250	Scale	1:25
horiz.		vert.	
Sheet	03	of	05
Eng. Project No.	24-0834		

Project	CLARKE RD AND COMO LAKE AVE INTERSECTION IMPROVEMENTS
Description	PAVEMENT MARKINGS
File	24-0834-PM1
REV.	4



NOT FOR CONSTRUCTION

BENCHMARK:
GEODETIC ELEVATIONS ARE DERIVED FROM
G.P.S. OBSERVATION AT CUX 8074,
ELEV. = 109.441M
DATUM IS [CGVD28 (GVRD 2018)]

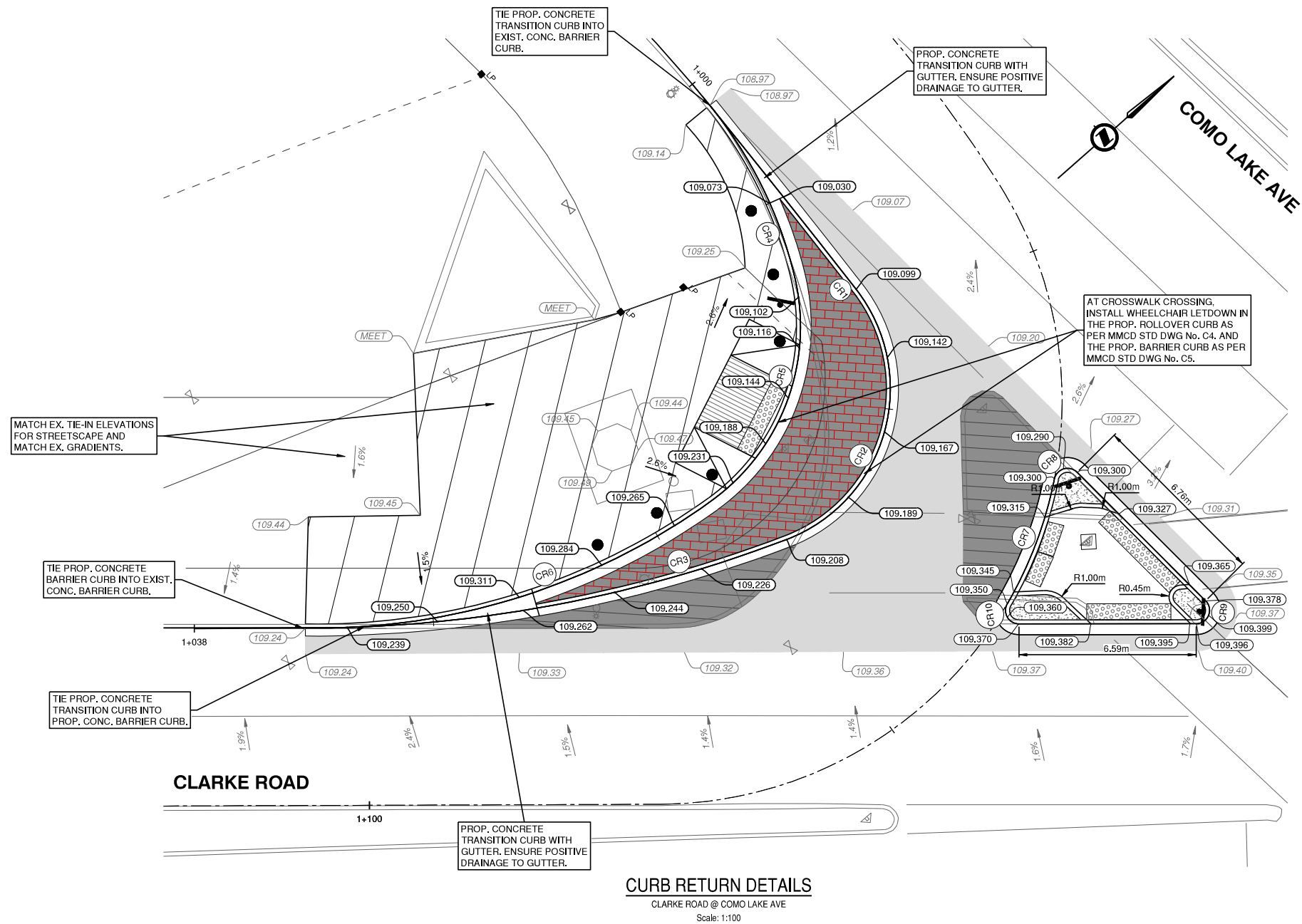
NOTES:

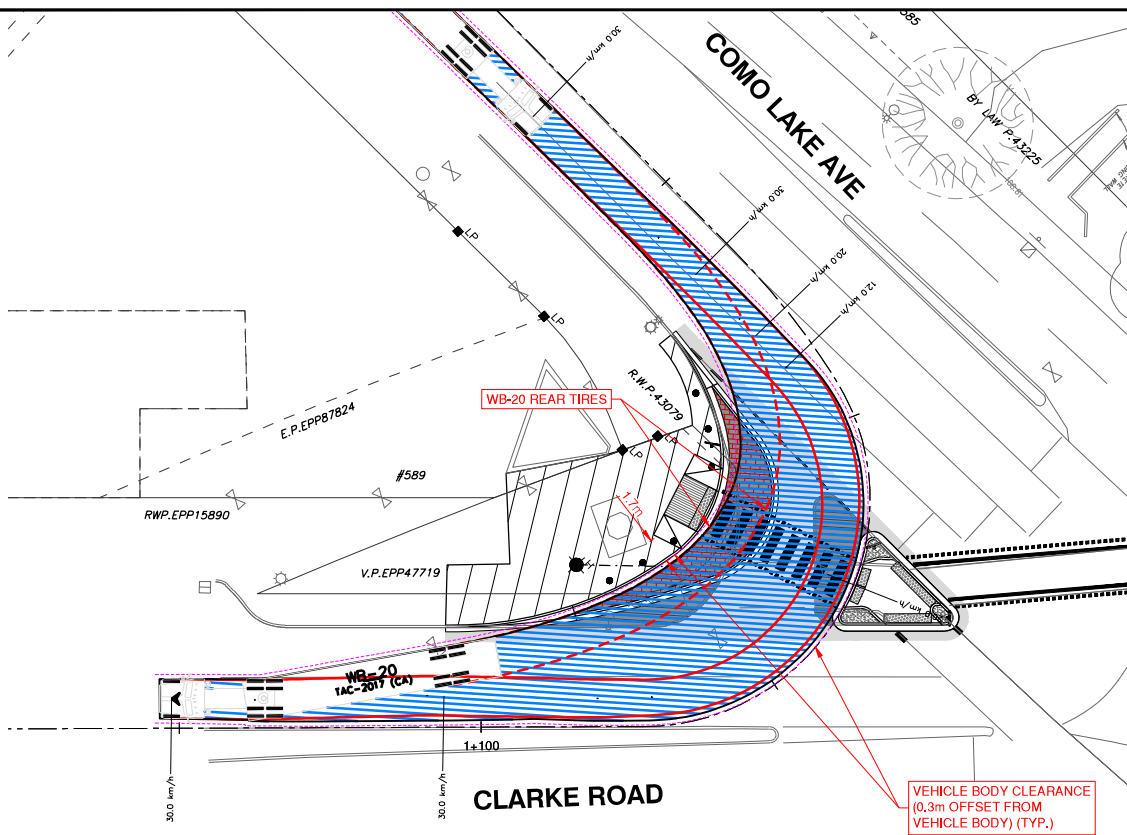
- TACTILE PANELS TO BE ADA SOLUTIONS CAST IN PLACE
REPLACEABLE PANELS, TACTILE PANEL TO BE COLOUR YELLOW.
PANELS TO BE 600mm DEEP WITH INSTALLED LENGTHS MATCHING
THE WIDTH OF RAMP OPENING. ADJUST INDIVIDUAL PANELS AS
NECESSARY TO MATCH THE RADIUS OF MEDIAN WHERE
APPROPRIATE.
- ROUND AND SMOOTHEN EDGE OF CONCRETE BARRIER CURB TO
PROVIDE A SMOOTH TRANSITION AT CURB TIE IN.
- MINIMUM CROSS FALL TO BE 2.0%

LEGEND:

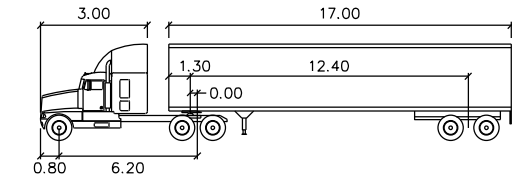
109.00 - GUTTERLINE ELEVATION (PROPOSED)
109.00 - GUTTERLINE ELEVATION (EXISTING)

CURVE TABLE					
CURVE No.	RADIUS	DELTA	LENGTH	BC NORTHING / EASTING	EC NORTHING / EASTING
CR1	500.000	1° 00' 06"	8.740	5458951.569 / 508321.071	5458952.002 / 508312.341
CR2	6.000	107° 05' 14"	11.214	5458943.484 / 508326.343	5458951.569 / 508321.071
CR3	50.000	19° 11' 01"	16.741	5458929.057 / 508318.006	5458943.484 / 508326.343
CR4	16.000	25° 31' 59"	7.130	5458950.181 / 508319.174	5458952.002 / 508312.341
CR5	8.000	67° 51' 19"	9.474	5458942.325 / 508323.420	5458950.181 / 508319.174
CR6	25.000	36° 51' 12"	16.080	5458927.883 / 508316.999	5458942.325 / 508323.420
CR7	15.000	18° 59' 31"	4.972	5458948.064 / 508333.556	5458952.437 / 508331.236
CR8	0.500	123° 46' 08"	1.080	5458952.437 / 508331.236	5458950.181 / 508319.174
CR9	0.500	134° 57' 11"	1.178	5458953.672 / 508338.344	5458952.843 / 508338.752
CR10	0.500	120° 16' 11"	1.050	5458947.893 / 508334.406	5458948.064 / 508333.556



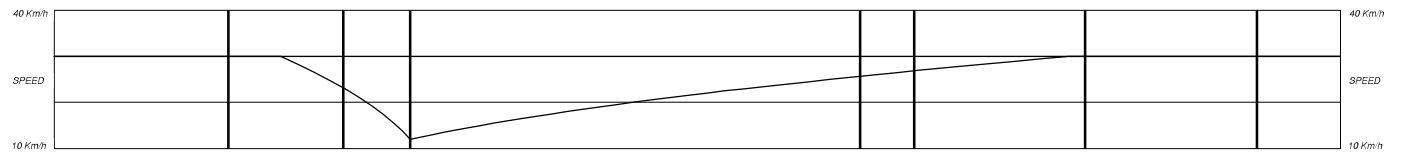


WB-20 TURNING - USING SECOND LANE

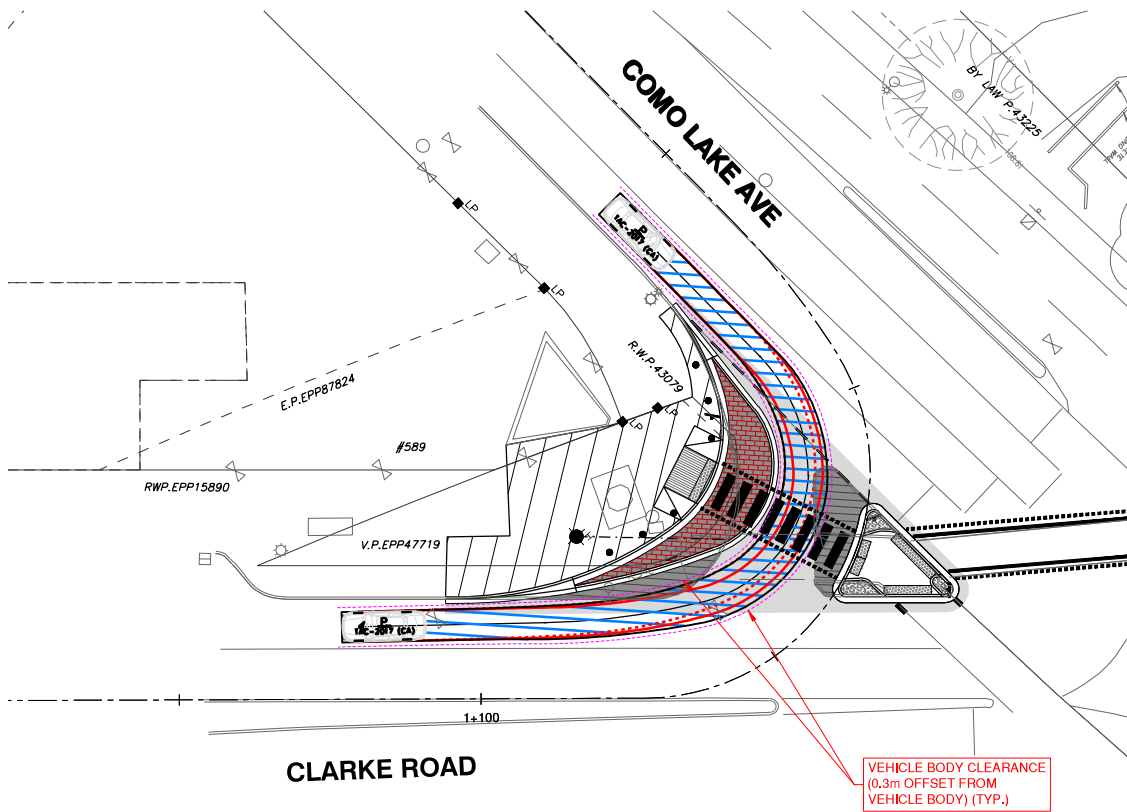


WB-20

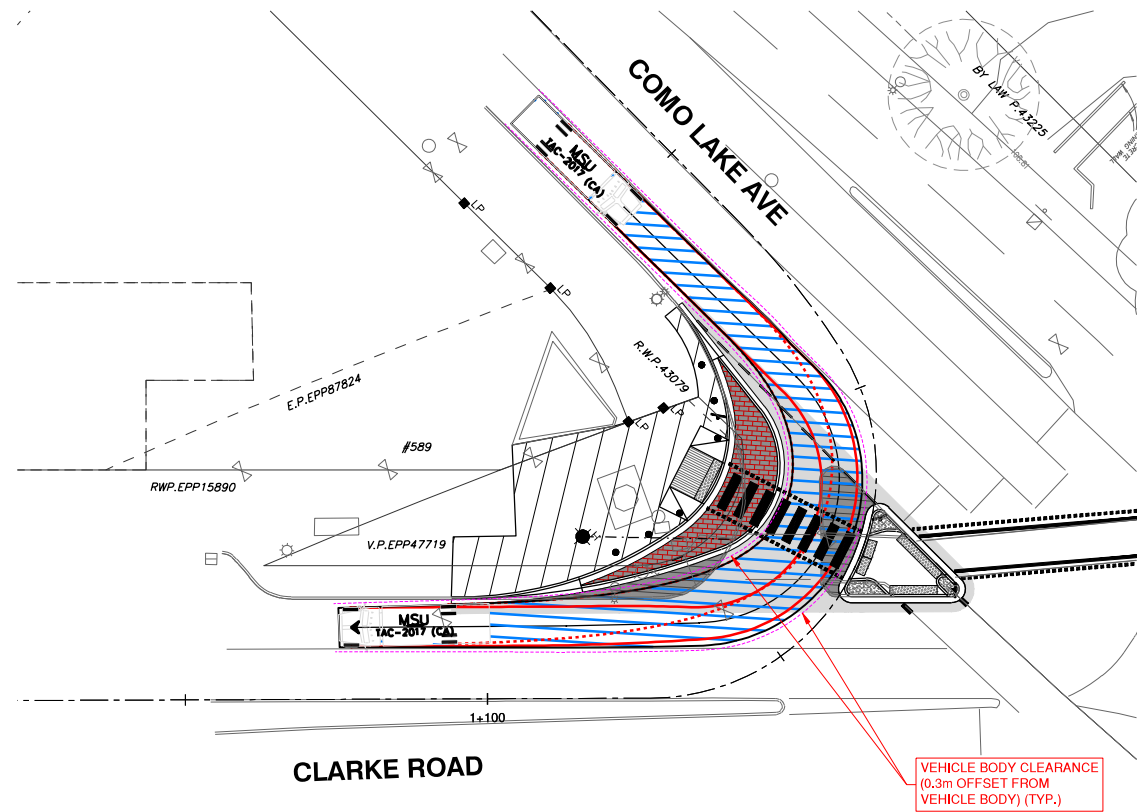
	Tractor Width	Trailer Width	Tractor Track	Trailer Track	Lock to Lock Time	Steering Angle	Articulating Angle
meters	: 2.60	: 2.60	: 2.60	: 2.60	: 6.0	: 28.2	: 70.0



SPEED PROFILE REPORT
Cumulative Path Length 85.14m



PASSENGER CAR



MSU



EGBC PERMIT No. 1001128

NOT FOR CONSTRUCTION

Edge of pavement	Hydrant	Sanitary service	Hydro Guy Wire
Watermain and valve	Water air valve	Sanitary cleanout	Hydro Kiosk
Drainage sewer, MH	Water blowoff	Utility pole(joint pole)	Vegetation Canifer
Drainage ditch	Water service	Utility pole with light	Vegetation Deciduous
Sanitary sewer, MH	Catch basin, top inlet	Streetlight, down	Vegetation Shrub
Sanitary forcemain	Catch basin, side inlet	Streetlight, post top	Survey Traverse Hub
Gasmain and valve	Catch basin, round	Comb signal pole	Survey Iron Pin
Hydro duct, MH	Drainage service	Traffic signal pole	Survey Lead Plug
Telephone duct, MH	Drainage cleanout	Junction box	Survey Monument

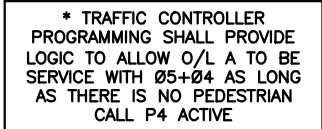
No.	Date	By	Revisions
5	07/18/2025	PD	REISSUED FOR TENDER
4	06/11/2025	PD	ISSUED FOR TENDER
3	05/20/2025	SL	DRAFT 100% SUBMISSION - ISSUED FOR REVIEW
2	04/11/2025	SL	90% SUBMISSION - ISSUED FOR REVIEW
1	03/21/2025	GZ	PRELIMINARY DESIGN SUBMISSION

Design by	Date
GZ	02/14/2025
Drawn by	Date
GZ	02/14/2025
Checked by	Date
WC	03/21/2025
Approved by	Date
PD	03/21/2025



Scale	1:250	Scale	1:250
horiz.		vert.	
Sheet	05	of	05
Eng. Project No.	24-0834		

Project	CLARKE RD AND COMO LAKE AVE INTERSECTION IMPROVEMENTS
Description	VEHICLE MOVEMENTS
File	24-0834-VM1
REV.	5



MODIFY: EXIST. POLE (3)

ELEVATIONS

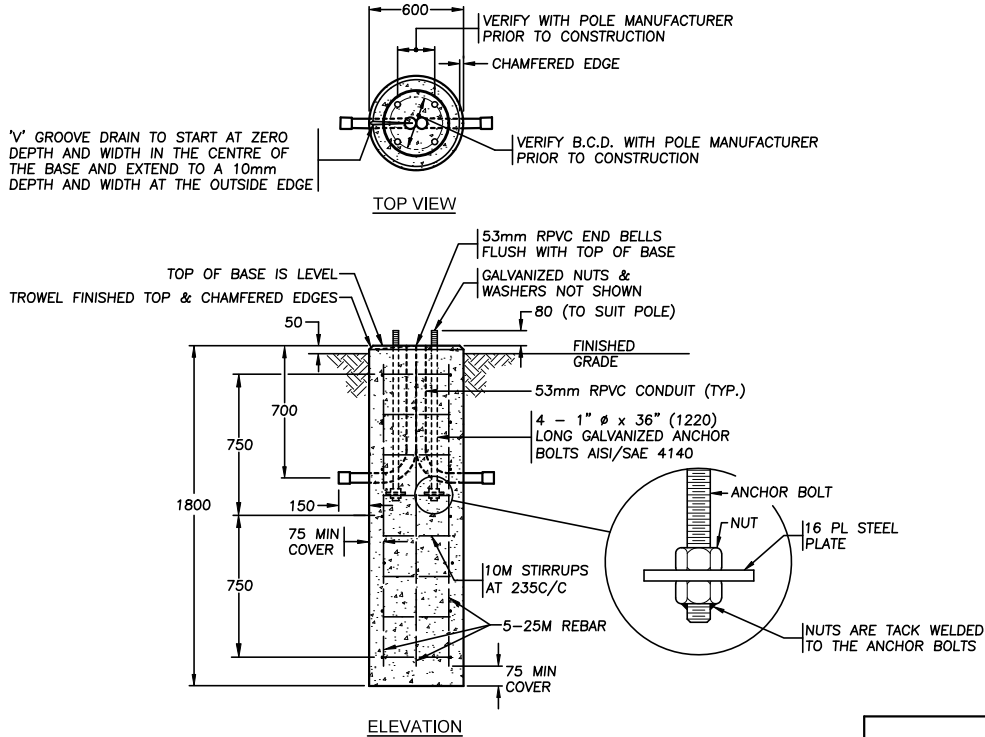
0 1:75 5

A horizontal scale bar with alternating black and white segments. The number '0' is at the left end, '5' is at the right end, and '1:75' is centered below the bar.

COQ. ASBUILT No.
XXXXX

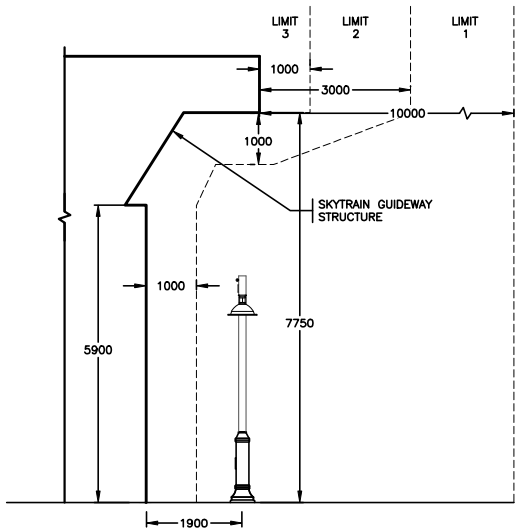
Project	COMO LAKE AVENUE AND CLARKE ROAD
Description	TRAFFIC SIGNAL MODIFICATION
File	8405-25

Plot Date: June 10, 2025

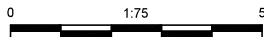


SPECIAL SONOTUBE CONCRETE BASE DETAIL FOR COMBINATION ROADWAY/PEDESTRIAN LUMINAIRE POLE

N.T.S.



O/H SKYTRAIN GUIDEWAY CHECK - NEW PEDESTRIAN POLE AT S/W CORNER OF COMO LAKE AVENUE AND CLARKE ROAD



NOTES (APPLY TO SPECIAL SONOTUBE FOUNDATION):

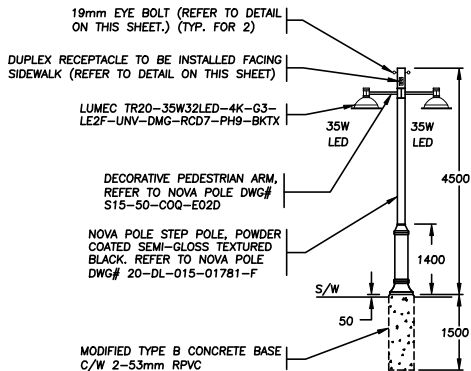
1. ALL HARDWARE SHALL BE GALVANIZED IN ACCORDANCE WITH CAN/CSA G14-M92
2. APPLY LUBRIPLATE OR OTHER SUITABLE GREASE TO EXPOSED PORTION OF ANCHOR BOLTS AND NUTS PRIOR TO POLE INSTALLATION
3. CONCRETE TO HAVE A MINIMUM STRENGTH OF 30MPa at 28 DAYS.
4. FOOTINGS ARE DESIGNED FOR SOILS WITH A MINIMUM ALLOWABLE BEARING PRESSURE OF 125kPa.
5. ALL DIMENSIONS ARE IN MILLIMETERS UNLESS OTHERWISE NOTED.
6. ALL WORK SHALL BE CONSTRUCTED IN ACCORDANCE WITH THE MINISTRY STANDARD SPECIFICATIONS FOR HIGHWAY CONSTRUCTION (2012 ISSUE) UNLESS OTHERWISE NOTED ON THESE DRAWINGS OR IN THE SPECIAL PROVISIONS.
7. BACKFILL SHALL BE S.G.S.B. IN ACCORDANCE WITH SECTION 202 OF BC MoT STANDARD SPECIFICATIONS FOR HIGHWAY CONSTRUCTION. BACKFILL SHALL BE PLACED AND COMPACTED IN LAYERS NO MORE THAN 150mm THICK TO 100% STANDARD PROCTOR MAXIMUM DENSITY (ASTM D-698).
8. CONTRACTOR SHALL PROVIDE ALL MEANS NECESSARY TO ENSURE THAT EXCAVATIONS SHALL REMAIN DRY DURING CONSTRUCTION.
9. ALL EXPOSED EDGES SHALL BE CHAMFERED 20 x 20 U.N.O.
10. CONFIRM ANCHOR BOLTS AND THEIR PLAN ORIENTATION PRIOR TO SETTING IN CONCRETE FORMS.

120V SERVICE LOAD (SOUTHWEST OF INTERSECTION) (EXISTING 100A-120/240V SERVICE KIOSK AT COMO LAKE & CLARKE)						
WATTAGE (W)	CCT.PHASE	EXISTING	REMOVED	NEW	TOTAL No. OF LIGHTS	CURRENT(A)
158W (LED)	A	0	0	3	3	3.95A
	B	0	0	3	3	3.95A
135W (LED)	A	3	3	0	0	0.00A
	B	3	2	0	1	1.13A
80W (LED)	A	1	1	0	0	0.00A
	B	0	0	1	1	0.67A
70W (LED)	A	2	0	0	2	1.17A
	B	0	0	0	0	0.00A
35W (LED)	A	6	0	1	7	2.04A
	B	3	1	0	2	0.58A
1.11% VOLTAGE DROP						

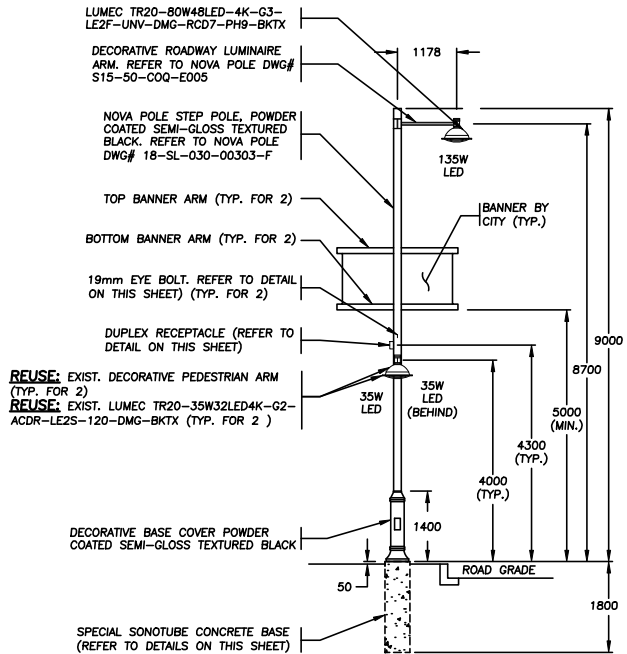
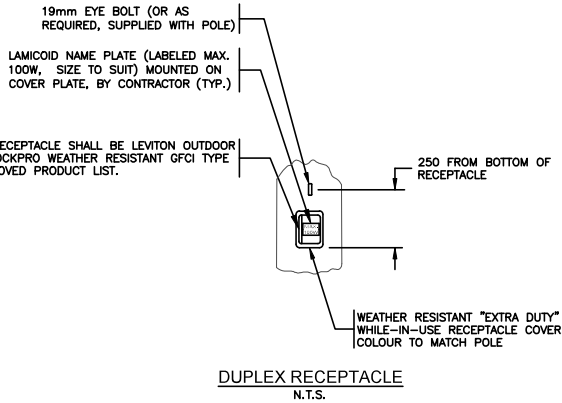
* BASED ON ULTIMATE DESIGN

TRANSLINK NOTES:

1. BEFORE WORK COMMENCES, CONTACT SKYTRAIN'S WAYSIDE AND/OR SAFETY DEPARTMENTS 604-520-3641 OR AFTER HOURS 604-520-5555.
2. PROMINENTLY DISPLAY AT THE WORKSITE SKYTRAIN'S EMERGENCY NUMBER: 604-520-5555, HAVE IMMEDIATE AVAILABILITY TO A MEANS OF CONTACTING SKYTRAIN.
3. ENSURE ALL EMPLOYEES ARE MADE AWARE OF SKYTRAIN'S LIMITS OF APPROACH AND THE ASSOCIATED LIMITATIONS.
4. CONTRACTOR TO REFER TO THE SKYTRAIN LIMITS OF APPROACH DOCUMENT SO THAT ALL NECESSARY PRECAUTIONS ARE FOLLOWED FOR WORKING IN LIMIT 1, 2, AND 3.

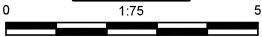


PROPOSED PEDESTRIAN LUMINAIRE POLE C/W DOUBLE LUMINAIRES PARALLEL TO SIDEWALK (ON CLARKE ROAD)



PROPOSED STREET LIGHTING POLE C/W DOUBLE PED LUMINAIRES PARALLEL TO SIDEWALK (ON CLARKE ROAD)

ELEVATIONS



NOT FOR CONSTRUCTION

2025-06-11



COQ. ASBUILT No.

EXXXX

Benchmark:

Contractor to contact Telus, BC Hydro, FortisBC and BC one call prior to construction to confirm locations of utilities and appurtenances requiring adjustment.

Plot Date: June 10, 2025



DMD & Associates
Electrical Consultants Ltd.

#12-17358 104th Avenue, Surrey, BC, Canada V4N 5M3
www.dmdeng.com office@dmeng.com Fax: 604588-8012
DMD PROJECT No. 8405-25-03 of 03

No.	Date	By	Revisions
4	2025-06-11	CB	ISSUED FOR TENDER
3	2025-05-14	CB	100% SUBMISSION
2	2025-04-11	CB	80% SUBMISSION
1	2025-03-25	CB	50% SUBMISSION

ACCEPTED FOR CONSTRUCTION

Date:

Manager of Development Servicing

Coquitlam

Engineering & Public Works

3000 Guildford Way, Coquitlam, B.C. V3B 7N2

PERMIT TO PRACTICE

Signature: _____

Date: _____

PERMIT NUMBER: 1000771

The Association of Professional Engineers and Geoscientists of British Columbia



Design by

CB

Date

21-02-2025

Scale

1:75

Drawn by

EK

Date

10-02-2025

Sheet of

3 OF 3

Checked by

MC

Date

25-02-2025

Eng. Project No.

Approved by

XX

Date

DD-MM-YYYY

Project

COMO LAKE AVENUE
AND CLARKE ROAD

Description

TRAFFIC SIGNAL MODIFICATION

File: 8405-25