

Client:

3000 GUILDFORD WAY, COQUITLAM

Description:

2025 PAVEMENT REHABILITATION
LOUGHEED HIGHWAY

ML Project No:

2111-06538-00

Client Project No:

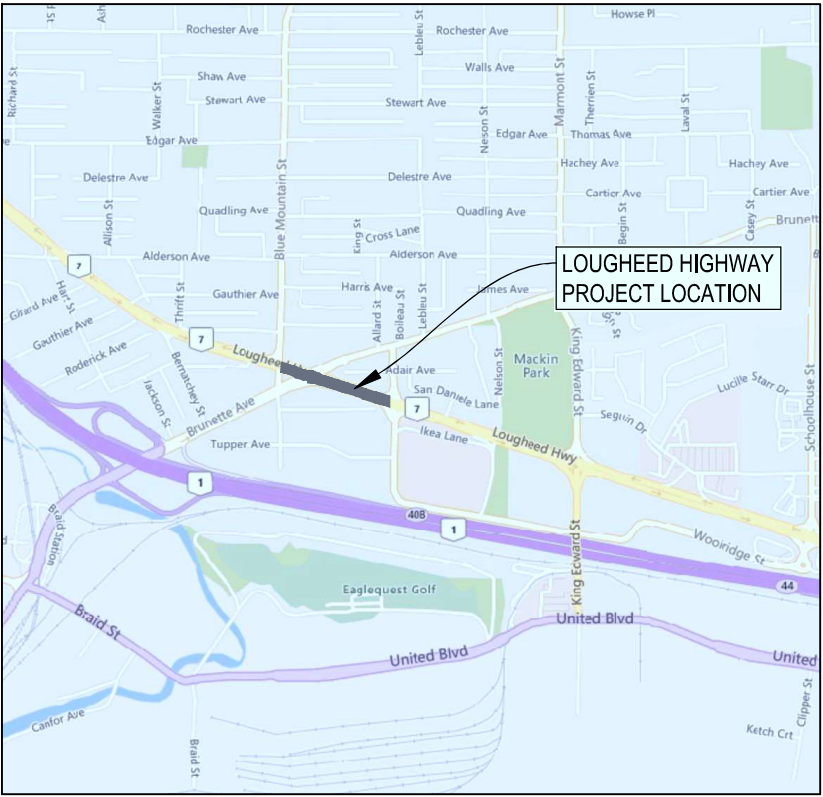
73389

ISSUED FOR TENDER

APRIL 11, 2025



Suite 2300
13450 102nd Avenue
Surrey BC
Canada V3T 5X3
T 604 596 0391



LOCATION PLAN
SCALE 1:10,000

DRAWING INDEX	
SHEET NUMBER	SHEET TITLE
00	COVER
01	SITE PLAN - LOUGHEED HIGHWAY
02	ROADWORKS - LOUGHEED HIGHWAY - STA. 0+998 TO STA. 1+100
03	ROADWORKS - LOUGHEED HIGHWAY - STA. 1+100 TO STA. 1+229
04	ROADWORKS - LOUGHEED HIGHWAY - STA. 1+229 TO STA. 1+318
05	ROADWORKS - LOUGHEED & BRUNETTE INTERSECTION - TURNING MOVEMENTS





GENERAL CONSTRUCTION NOTES:

1. CONTACT & NOTIFY ALL HOMEOWNERS AFFECTED BY WORKS 4 WEEKS PRIOR TO CONSTRUCTION.
2. ALL CONSTRUCTION AND MATERIALS SHALL CONFORM TO MUNICIPALITY STANDARD SPECIFICATIONS AND DRAWINGS UNLESS OTHERWISE NOTED ON THIS DRAWING.
3. REPAIR AND/OR REPLACE ALL INFRASTRUCTURE/PRIVATE PROPERTY DAMAGED OR REMOVED DURING CONSTRUCTION, TO BETTER THAN, OR EQUAL TO PRE-CONSTRUCTION CONDITION.
4. REINSTATE ALL PRIVATE PROPERTY AND BOULEVARDS TO PRE-CONSTRUCTION CONDITIONS.
5. CONTACT MUNICIPALITY PARKS DEPARTMENT PRIOR TO WORKING IN AND AROUND TREES.
6. ENSURE THE CURRENT MUNICIPAL O.H.S.S. GROUND DISTURBANCE PRACTICE AND PROCEDURES ARE FOLLOWED, CONTACT BC1 AT 1-800-474-6886 FOR EXTERNAL UTILITY LOCATIONS AT LEAST 72 HOURS PRIOR TO THE START OF CONSTRUCTION.
7. NOTIFY THOSE HOMEOWNERS WHO WILL BE AFFECTED BY CONSTRUCTION 48 HRS BEFORE BEGINNING WORKS.
8. CONFIRM LOCATION AND ELEVATION OF EXISTING UTILITIES AT ALL CROSSINGS AND CONNECTIONS PRIOR TO CONSTRUCTION.
9. ENSURE ALL EXISTING SERVICES STAY IN OPERATIONAL CONDITION DURING CONSTRUCTION.

ENVIRONMENTAL NOTES:

USE BEST MANAGEMENT PRACTICES DURING CONSTRUCTION, ADJUST WORK ACTIVITIES DURING PERIODS OF HEAVY RAIN TO MINIMIZE SEDIMENTS ENTERING THE STORM DRAINAGE SYSTEM. SOME BMB'S TO CONSIDER:

1. CHECK ALL EQUIPMENT FOR FLUID LEAKS PRIOR TO ENTERING THE WORK AREA.
2. NO EQUIPMENT RE-FUELING TO OCCUR IN THE WORK AREA UNLESS SPILL PROTECTION MEASURES ARE IN PLACE.
3. A SPILL KIT IS TO BE MAINTAINED ON SITE THROUGHOUT THE CONSTRUCTION PERIOD.
4. SURFACE WATER IS TO BE MANAGED WITHIN THE WORK AREA AND TREATED BEFORE DISCHARGED. THIS MAY INCLUDE ONSITE DETENTION AND/OR CULVERT FILTRATION.
5. COVER EXPOSED SOILS IN INCLEMENT WEATHER IN TARP, HYDRO SEED OR ORGANIC LEAF MULCH.
6. STOCKPILE SOILS AWAY FROM CULVERT INLETS AND ENSURE THEY ARE COVERED IF LEFT FOR MORE THAN 48 HOURS.
7. SURROUND PROTECTED TREES WITH SNOW FENCING AT DRIP LINE OR CRITICAL ROOT ZONE OF TREE DURING CONSTRUCTION, CONTACT MUNICIPAL ARBORIST PRIOR TO BEGINNING CONSTRUCTION, INSTALL SILT FENCING AS PER DETAIL A IN LOCATION SHOWN ON PLAN.

ROADWORKS NOTES:

1. ALL WORKS TO CONFORM TO THE MASTER MUNICIPAL CONSTRUCTION DOCUMENTS (2009 EDITION - PLATINUM) AND ALL COQUITLAM APPROVED REVISIONS, AND TO THE CURRENT EDITION OF THE CITY OF COQUITLAM SUPPLEMENTAL SPECIFICATIONS AND STANDARD DETAIL DRAWINGS.
2. CHANGES OF GRADE AND DIRECTION FORMED BY SMOOTH VERTICAL AND HORIZONTAL CURVES.
3. ALL EXISTING MANHOLE FRAMES, WATER AND GAS VALVE BOXES, SURVEY MONUMENT BOXES ETC. TO BE ADJUSTED TO SUIT NEW PAVEMENT GRADE AND CROSS-FALL.
4. CONTRACTOR TO VERIFY MINIMUM 2% CROSS-FALL PRIOR TO PAVING.
5. CONTRACTOR IS RESPONSIBLE TO REPAIR ANY DAMAGE TO THE CURB, SIDEWALK, OR DRIVEWAYS DAMAGED BY THE MILLING OR PAVING OPERATION.
6. RECESSED PAVEMENT MARKERS WILL BE INSTALLED BY OTHERS AFTER CONSTRUCTION.

SIGNAGE AND PAVEMENT MARKING NOTES:

1. ALL PAVEMENT MARKINGS AND SIGNAGE AS PER THE MANUAL UNIFORM TRAFFIC CONTROL DEVICES FOR CANADA.
2. ALL PAVEMENT MARKINGS ARE THERMOPLASTIC.

THIS DRAWING AND DESIGN IS THE PROPERTY OF McELHANNEY AND SHALL NOT BE USED, REUSED OR REPRODUCED WITHOUT THE CONSENT OF McELHANNEY. McELHANNEY WILL NOT BE HELD RESPONSIBLE FOR THE IMPROPER OR UNAUTHORIZED USE OF THIS DRAWING AND DESIGN.

THIS DRAWING AND DESIGN HAS BEEN PREPARED FOR THE CLIENT IDENTIFIED, TO MEET THE STANDARDS AND REQUIREMENTS OF THE APPLICABLE PUBLIC AGENCIES AT THE TIME OF PREPARATION. McELHANNEY, ITS EMPLOYEES, SUBCONSULTANTS AND AGENTS WILL NOT BE LIABLE FOR ANY LOSSES OR OTHER CONSEQUENCES RESULTING FROM THE USE OR RELIANCE UPON, OR ANY CHANGES MADE TO, THIS DRAWING, BY ANY THIRD PARTY, INCLUDING CONTRACTORS, SUPPLIERS, CONSULTANTS AND STAKEHOLDERS, OR THEIR EMPLOYEES OR AGENTS, WITHOUT McELHANNEY'S PRIOR WRITTEN CONSENT.

INFORMATION ON EXISTING UNDERGROUND FACILITIES MAY NOT BE COMPLETE OR ACCURATE. McELHANNEY, ITS EMPLOYEES AND DIRECTORS ARE NOT RESPONSIBLE NOR LIABLE FOR THE LOCATION OF ANY UNDERGROUND CONDUITS, PIPES, CABLES OR OTHER FACILITIES WHETHER SHOWN OR OMITTED FROM THIS PLAN. PRIOR TO CONSTRUCTION CONTRACTOR SHALL EXPOSE LOCATIONS OF ALL EXISTING FACILITIES BY HAND DIGGING OR HYDROVAC AND ADVISE THE ENGINEER OF POTENTIAL CONFLICTS.



Edge of pavement	Hydrant	Sanitary service
Watermain and valve	Water air valve	Sanitary cleanout
Drainage sewer, MH	Water blowoff	Utility pole (joint pole)
Drainage ditch	Water service	Utility pole with light
Sanitary sewer, MH	Streetlight, davit	Streetlight, post top
Sanitary forcemain	Catch basin, top inlet	Catch basin, round
Gasmain and valve	Catch basin, side inlet	Drainage service
Hydro duct, MH	Comb signal pole	Drainage cleanout
Telephone duct, MH	Traffic signal pole	
	Traffic signal post	

STAMP

Approved Sealed

PB	2025.04.11	JK	ISSUED FOR TENDER	MH
PA	2025.03.07	JK	ISSUED FOR PRELIMINARY DESIGN	MH
NO.	DATE	BY	REVISIONS	ENG.

DESTROY ALL PRINTS BEARING PREVIOUS REVISION

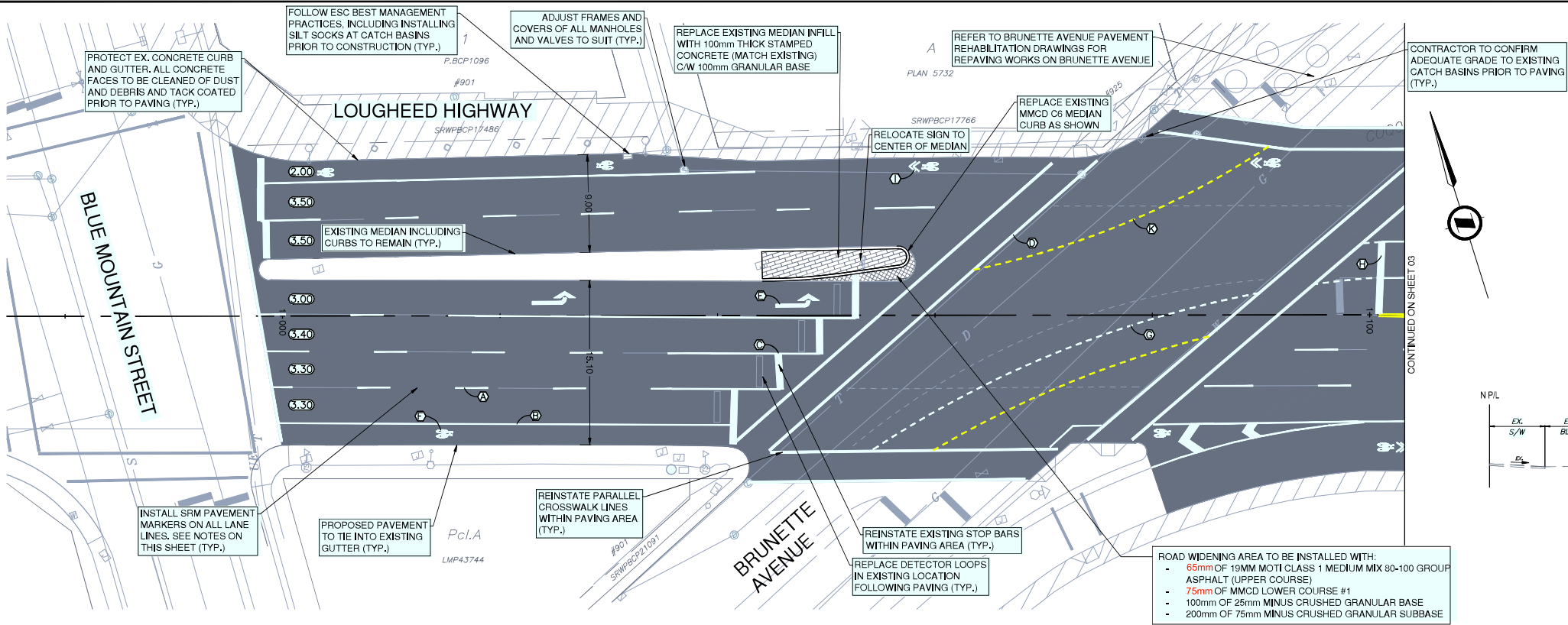
DESIGN BY	DATE
JK	APRIL 11, 2025
DRAWN BY	DATE
MHU	APRIL 11, 2025
CHECKED BY	DATE
MH	APRIL 11, 2025
APPROVED BY	DATE
MH	APRIL 11, 2025

McElhanney
McElhanney Ltd.
PERMIT NUMBER: 1003299
Engineers and Surveyors of BC

Suite 2300
13450 102nd Avenue
Surrey BC
Canada V3T 5X3
T 604-596 0391

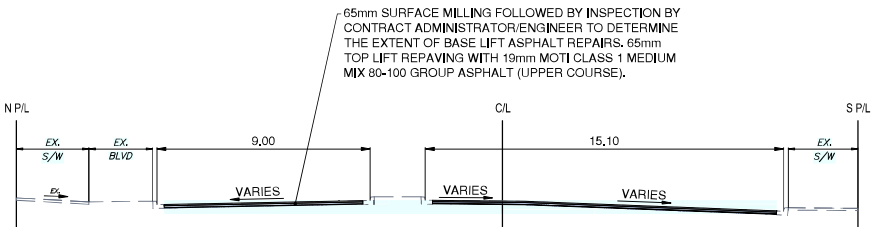
SCALE	1:1000	SCALE	
HORIZ.		VERT.	
SHEET	01	OF	05
ENG PROJECT NUMBER	2111-06538-00		

PROJECT	2025 PAVEMENT REHABILITATION
	LOUGHEED HIGHWAY
DESCRIPTION	SITE PLAN
FILE	06538-C1-000

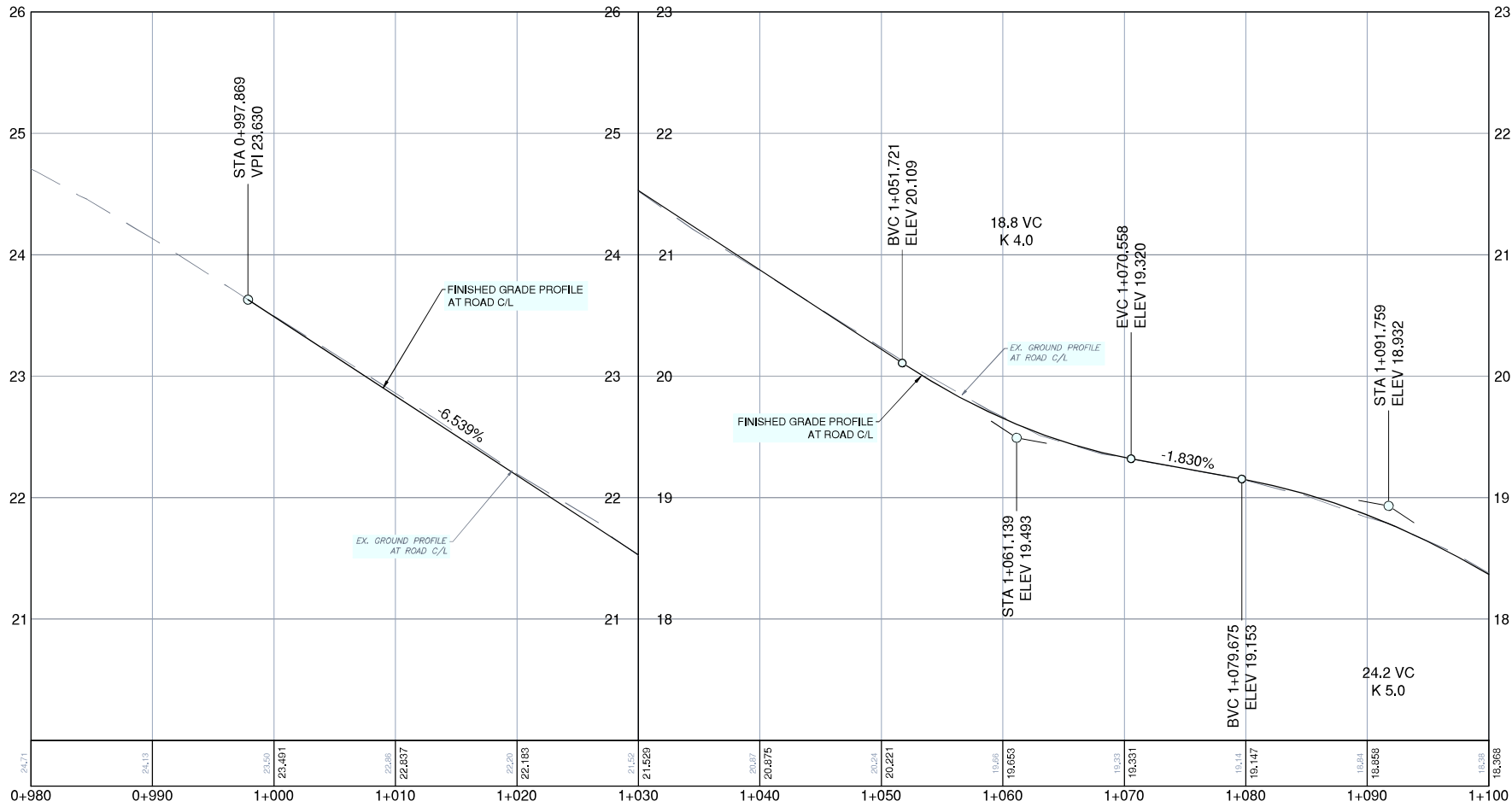


SNOW-PLOWABLE RECESSED PAVEMENT MARKERS (SRM) NOTES:

- NO SRM'S TO BE INSTALLED ALONG EXISTING AND PROPOSED ROAD SHOULDER WHITE FOG LINES
- SRM'S TO MATCH COLOR OF LANE PAVEMENT MARKING
- SRM'S TO BE PLACED 300mm IN ADVANCE OF BROKEN/DASHED LINES
- SRM'S TO BE OFFSET 50mm TO THE RIGHT OF SOLID LINES
- SRM'S TO BE SPACED AS FOLLOWS:
 - EXISTING AND PROPOSED BROKEN LANE LINES - 26m
 - EXISTING AND PROPOSED SOLID LANE LINES - 26m
 - PROPOSED SOLID EDGE LINES - 26m
 - EXISTING AND PROPOSED DECELERATION DASHED LINES - 12m
 - SOLID INTERSECTION APPROACH LINES - 12m
- WHERE PAVEMENT MARKING LENGTHS ARE NOT SUFFICIENT FOR DESCRIBED SPACING, SRM'S ARE TO BE INSTALLED AT THE BEGINNING AND END OF THE PAVEMENT MARKING
- TOP OF REFLECTORS TO BE RECESSED BELOW THE ASPHALT SURFACE WITHIN A MILLED SLOT AS PER BC MOT MANUAL OF STANDARD TRAFFIC SIGNS AND PAVEMENT MARKINGS, CHAPTER 7.5.1
- RECESSED PAVEMENT MARKERS TYPE TO MATCH EXISTING (EXCLUDES METAL CRADLE)



FULL DEPTH MILLING AND PAVING TYPICAL CROSS SECTION



KEY NOTES

- 100mm WHITE BROKEN LANE LINE (3.6.3)
- 100mm WHITE SOLID LINE
- 600mm WHITE STOP BAR
- 200mm WHITE CROSSWALK LINE
- WHITE LEFT-TURN ARROW
- WHITE BIKE STENCIL
- 100mm WHITE BROKEN GUIDE LINE (0.5,0.5,0.5)
- 100mm DOUBLE SOLID YELLOW LINE
- WHITE BIKE STENCIL WITH DOUBLE ARROW
- WHITE RIGHT-TURN ARROW
- 100mm YELLOW BROKEN GUIDE LINE (0.5,0.5,0.5)

LEGEND

- SURFACE MILLING AND PAVING
- ROAD WIDENING

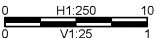
SURVEY CONTROL:

- THE SURVEY IS ON A LOCAL GROUND COORDINATE SYSTEM.
- THE ELEVATIONS ARE GEODETIC AND ARE IN METRES.
- TO CONVERT TO NAD83 UTM COORDINATES, MULTIPLY BY THE COMBINED SCALE FACTOR OF 0.999987 ABOUT POINT 0.0
- GEODETIC ELEVATIONS ARE DERIVED FROM G.P.S. OBSERVATION AT COORDINATES LOCATED AT INTERSECTION OF LOUGHEED HWY. AND BRUNETTE AVE., ELEVATION = 15.87m, DATUM IS ICGD08 (GVD 2013).

THIS DRAWING AND DESIGN IS THE PROPERTY OF McELHANNEY AND SHALL NOT BE USED, REUSED OR REPRODUCED WITHOUT THE CONSENT OF McELHANNEY. McELHANNEY WILL NOT BE HELD RESPONSIBLE FOR THE IMPROPER OR UNAUTHORIZED USE OF THIS DRAWING AND DESIGN.

THIS DRAWING AND DESIGN HAS BEEN PREPARED FOR THE CLIENT IDENTIFIED, TO MEET THE STANDARDS AND REQUIREMENTS OF THE APPLICABLE PUBLIC, ASSIGNED AT THE TIME OF PREPARATION. McELHANNEY, ITS EMPLOYEES, SUBCONSULTANTS AND AGENTS WILL NOT BE LIABLE FOR ANY LOSSES OR OTHER CONSEQUENCES RESULTING FROM THE USE OR RELIANCE UPON, OR ANY CHANGES MADE TO, THIS DRAWING BY ANY THIRD PARTY INCLUDING CONTRACTORS, SUPPLIERS, CONSULTANTS AND STAKEHOLDERS, ON THEIR EMPLOYEES OR AGENTS, WITHOUT McELHANNEY'S PRIOR WRITTEN CONSENT.

INFORMATION ON EXISTING UNDERGROUND FACILITIES MAY NOT BE COMPLETE OR ACCURATE. McELHANNEY, ITS EMPLOYEES AND DIRECTORS ARE NOT RESPONSIBLE NOR LIABLE FOR THE LOCATION OF ANY UNDERGROUND CONDUITS, PIPES, CABLES OR OTHER FACILITIES WHETHER KNOWN OR UNKNOWN FROM THIS PLAN. PRIOR TO CONSTRUCTION CONTRACTOR SHALL EXPOSE LOCATIONS OF ALL EXISTING FACILITIES BY HAND DIGGING OR HYDROVAC AND ADVISE THE ENGINEER OF POTENTIAL CONFLICTS.



Edge of pavement	Hydrant	Sanitary service
Watermain and valve	Water air valve	Sanitary cleanout
Drainage sewer, MH	Water blowoff	Utility pole (joint pole)
Drainage ditch	Water service	Utility pole with light
Sanitary sewer, MH	Catch basin, top inlet	Streetlight, davit
Sanitary forcemain	Catch basin, side inlet	Streetlight, post top
Gasmain and valve	Comb signal pole	Traffic signal pole
Hydro duct, MH	Drainage service	Traffic signal post
Telephone duct, MH	Drainage cleanout	

STAMP
Approved Sealed

PB 2025.04.11	JK	ISSUED FOR TENDER	MH
PA 2025.03.07	JK	ISSUED FOR PRELIMINARY DESIGN	MH
NO.	DATE	BY	REVISIONS
			ENG.

DESIGN BY	DATE
JK	APRIL 11, 2025
DRAWN BY	DATE
MWJ	APRIL 11, 2025
CHECKED BY	DATE
MH	APRIL 11, 2025
APPROVED BY	DATE
MH	APRIL 11, 2025

Coquitlam

McElhanney

PERMIT TO PRACTICE

McElhanney Ltd.

PERMIT NUMBER: 1003299

Engineers and Geoscientists of BC

Suite 2300

13450 102nd Avenue

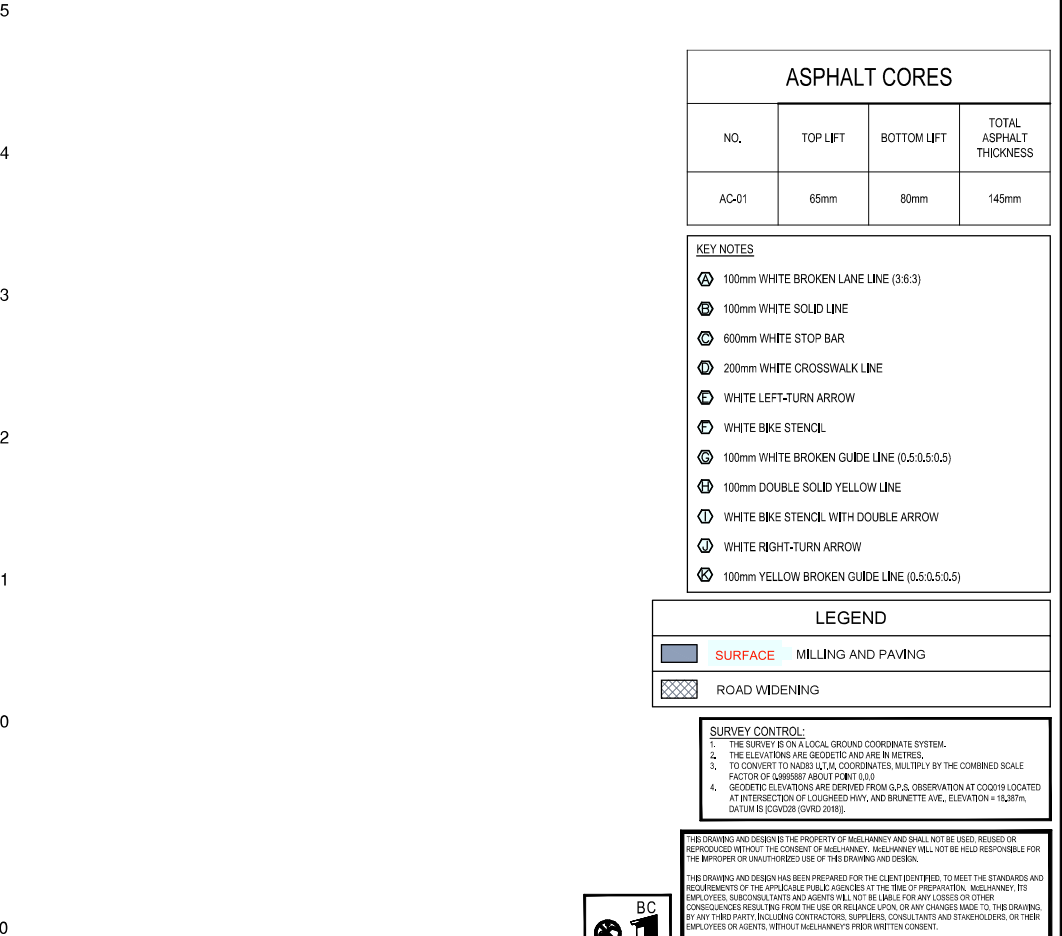
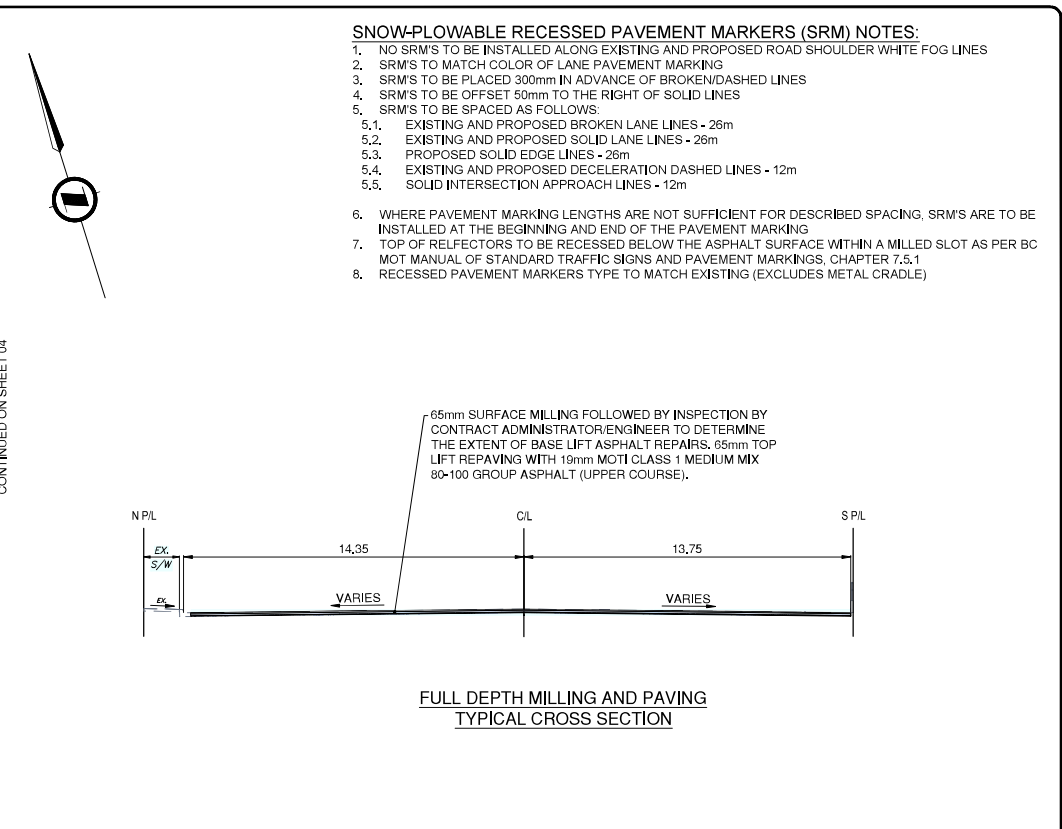
Surrey BC

Canada V3T 5X3

T 604 596 0391

SCALE	1:250	SCALE	1:25
HORIZ.		VERT.	
SHEET	02	OF	05
ENG PROJECT	2111-06538-00		
NUMBER			

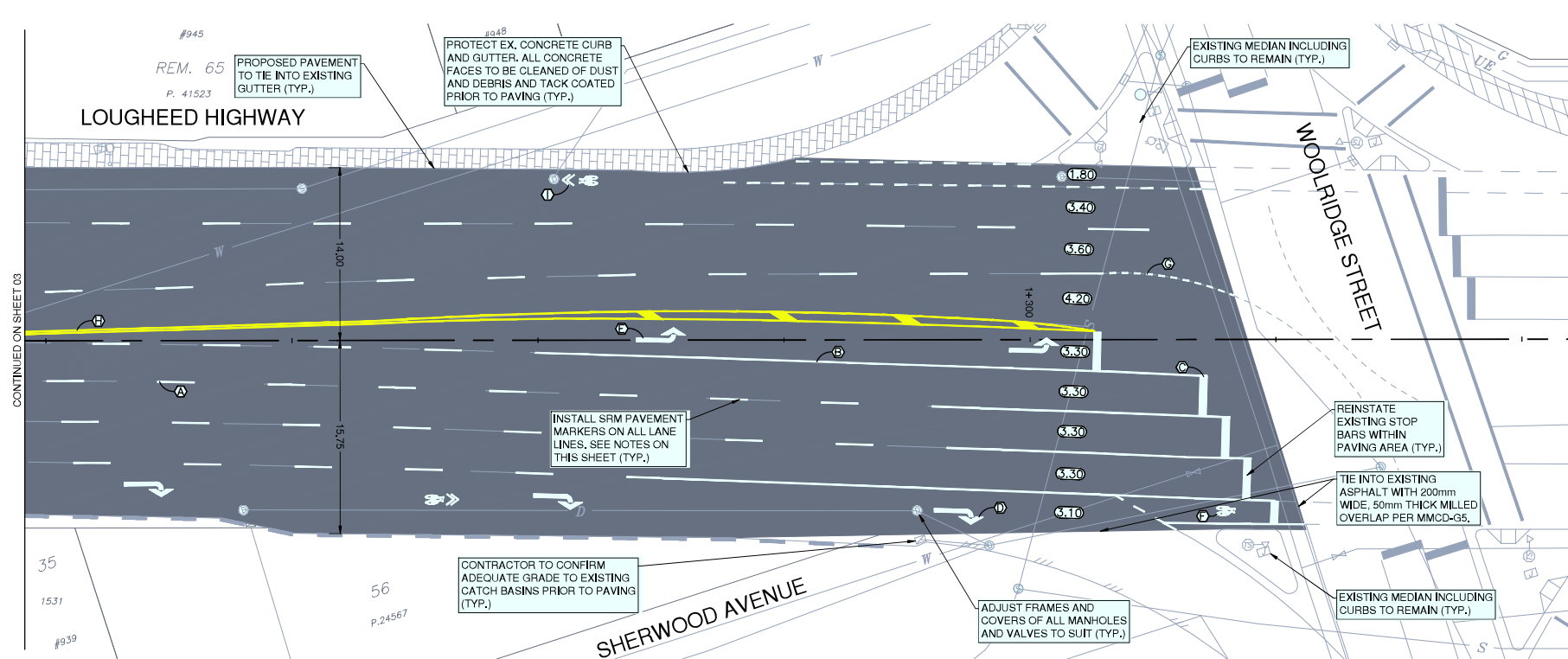
PROJECT	2025 PAVEMENT REHABILITATION
	LOUGHEED HIGHWAY
DESCRIPTION	ROADWORKS
	LOUGHEED HIGHWAY - STA. 0+998 TO STA. 1+100
FILE	06538-C1-100



PROJECT **2025 PAVEMENT REHABILITATION**
 LOUGHEED HIGHWAY

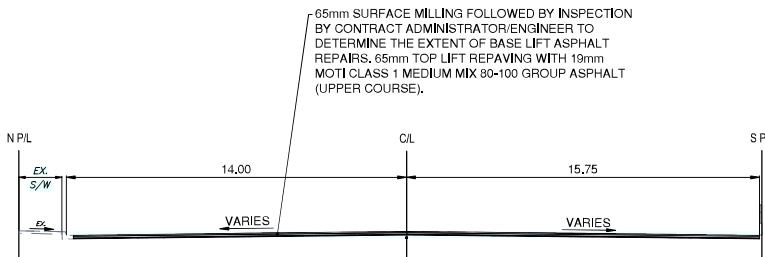
DESCRIPTION **ROADWORKS**
 LOUGHEED HIGHWAY - STA. 1+100 TO STA. 1+220

File: 06538-C-1-100.

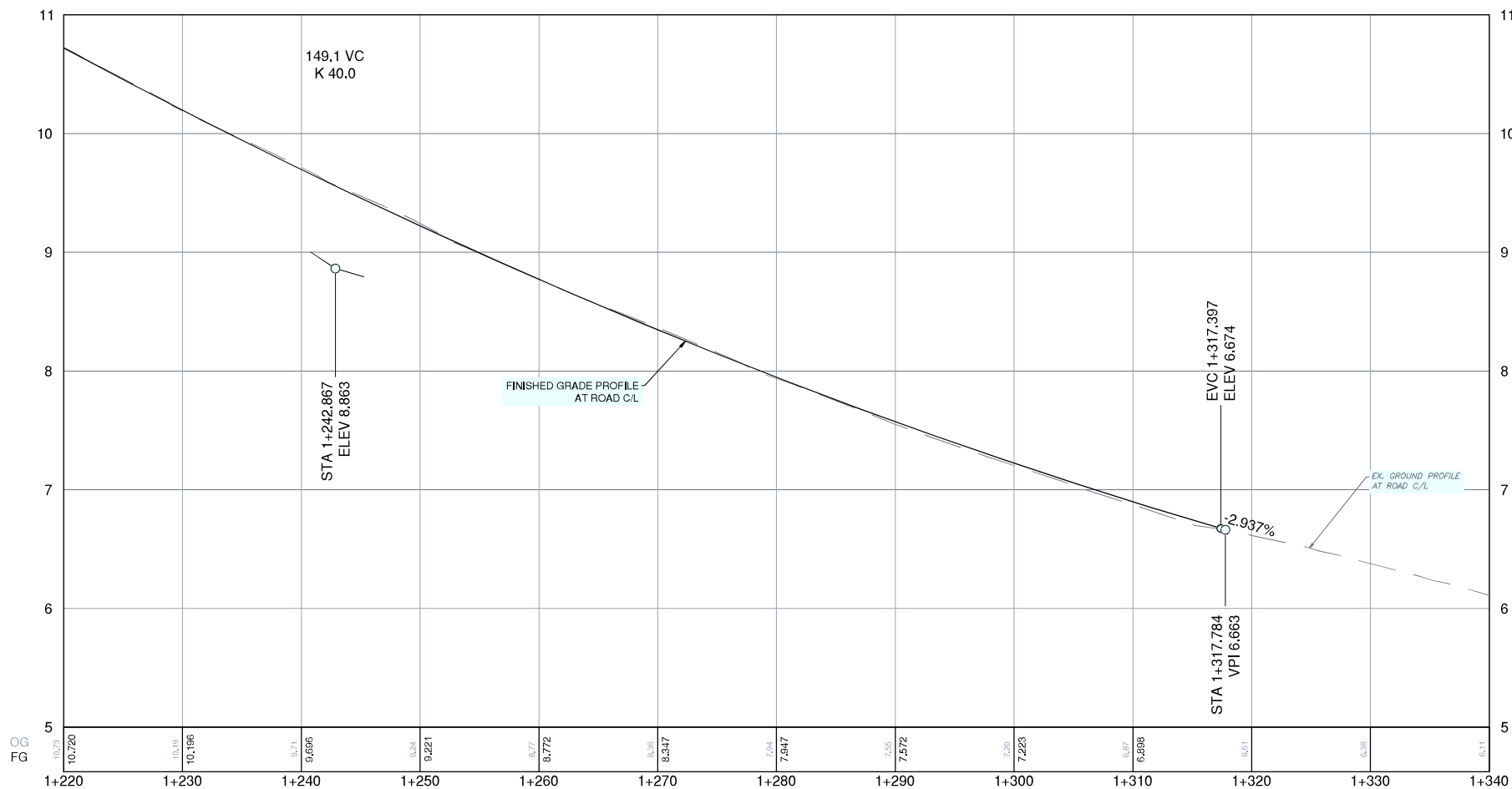


SNOW-PLOWABLE RECESSED PAVEMENT MARKERS (SRM) NOTES:

1. NO SRM'S TO BE INSTALLED ALONG EXISTING AND PROPOSED ROAD SHOULDER WHITE FOG LINES
2. SRM'S TO MATCH COLOR OF LANE PAVEMENT MARKING
3. SRM'S TO BE PLACED 300mm IN ADVANCE OF BROKEN/DASHED LINES
4. SRM'S TO BE OFFSET 50mm TO THE RIGHT OF SOLID LINES
5. SRM'S TO BE SPACED AS FOLLOWS:
 - 5.1. EXISTING AND PROPOSED BROKEN LANE LINES - 26m
 - 5.2. EXISTING AND PROPOSED SOLID LANE LINES - 26m
 - 5.3. PROPOSED SOLID EDGE LINES - 26m
 - 5.4. EXISTING AND PROPOSED DECELERATION DASHED LINES - 12m
 - 5.5. SOLID INTERSECTION APPROACH LINES - 12m
6. WHERE PAVEMENT MARKING LENGTHS ARE NOT SUFFICIENT FOR DESCRIBED SPACING, SRM'S ARE TO BE INSTALLED AT THE BEGINNING AND END OF THE PAVEMENT MARKING
7. TOP OF REFLECTORS TO BE RECESSED BELOW THE ASPHALT SURFACE WITHIN A MILLED SLOT AS PER BC MOT MANUAL OF STANDARD TRAFFIC SIGNS AND PAVEMENT MARKINGS, CHAPTER 7.5.1
8. RECESSED PAVEMENT MARKERS TYPE TO MATCH EXISTING (EXCLUDES METAL CRADLE)



FULL DEPTH MILLING AND PAVING
TYPICAL CROSS SECTION



KEY NOTES

- 100mm WHITE BROKEN LANE LINE (3.6.3)
- 100mm WHITE SOLID LINE
- 600mm WHITE STOP BAR
- 200mm WHITE CROSSWALK LINE
- WHITE LEFT-TURN ARROW
- WHITE BIKE STENCIL
- 100mm WHITE BROKEN GUIDE LINE (0.5/0.5/0.5)
- 100mm DOUBLE SOLID YELLOW LINE
- WHITE BIKE STENCIL WITH DOUBLE ARROW
- WHITE RIGHT-TURN ARROW
- 100mm YELLOW BROKEN GUIDE LINE (0.5/0.5/0.5)

LEGEND

- SURFACE MILLING AND PAVING
- ROAD WIDENING

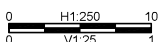
SURVEY CONTROL:

1. THE SURVEY IS ON A LOCAL GROUND COORDINATE SYSTEM.
2. THE ELEVATIONS ARE GEODETIC AND ARE IN METRES.
3. TO CONVERT TO NAD83 UTM COORDINATES MULTIPLY BY THE COMBINED SCALE FACTOR OF 0.999987 ABOUT POINT 0.0.
4. GEODETIC ELEVATIONS ARE DERIVED FROM G.P.S. OBSERVATION AT COORDINATES LOCATED AT INTERSECTION OF LOUGHEED HWY. AND BRUNETTE AVE. (ELEVATION = 15.87m). DATUM IS ICGD08 (GVD 2018).

THIS DRAWING AND DESIGN IS THE PROPERTY OF McELHANNEY AND SHALL NOT BE USED, REPRODUCED OR REPRODUCED WITHOUT THE CONSENT OF McELHANNEY. McELHANNEY WILL NOT BE HELD RESPONSIBLE FOR THE IMPROPER OR UNAUTHORIZED USE OF THIS DRAWING AND DESIGN.

THIS DRAWING AND DESIGN HAS BEEN PREPARED FOR THE CLIENT IDENTIFIED, TO MEET THE STANDARDS AND REQUIREMENTS OF THE APPLICABLE PUBLIC ASSOCIATION AT THE TIME OF PREPARATION. McELHANNEY, ITS EMPLOYEES, SUBCONSULTANTS AND AGENTS WILL NOT BE LIABLE FOR ANY LOSSES OR OTHER CONSEQUENCES RESULTING FROM THE USE OR RELIANCE UPON, OR ANY CHANGES MADE TO, THIS DRAWING BY ANY THIRD PARTY INCLUDING CONTRACTORS, SUPPLIERS, CONSULTANTS AND STAKEHOLDERS, OR THEIR EMPLOYEES OR AGENTS, WITHOUT McELHANNEY'S PRIOR WRITTEN CONSENT.

INFORMATION ON EXISTING UNDERGROUND FACILITIES MAY NOT BE COMPLETE OR ACCURATE. McELHANNEY, ITS EMPLOYEES AND DIRECTORS ARE NOT RESPONSIBLE NOR LIABLE FOR THE LOCATION OF ANY UNDERGROUND CONDUITS, PIPES, CABLES OR OTHER FACILITIES WHETHER KNOWN OR UNKNOWN TO THIS PLAN. PRIOR TO CONSTRUCTION CONTRACTOR SHALL EXPOSE LOCATIONS OF ALL EXISTING FACILITIES BY HAND DIGGING OR HYDROLOC AND ADVISE THE ENGINEER OF ANY POTENTIAL CONFLICTS.



Edge of pavement	Hydrant	Sanitary service
Watermain and valve	Water air valve	Sanitary cleanout
Drainage sewer, MH	Water blowoff	Utility pole (joint pole)
Drainage ditch	Water service	Utility pole with light
Sanitary sewer, MH	Catch basin, top inlet	Streetlight, davit
Sanitary force main	Catch basin, side inlet	Streetlight, post top
Gasmain and valve	Catch basin, round	Comb signal pole
Hydro duct, MH	Drainage service	Traffic signal pole
Telephone duct, MH	Drainage cleanout	Traffic signal post

STAMP
Approved Sealed

PB 2025.04.11	JK	ISSUED FOR TENDER	MH
PA 2025.03.07	JK	ISSUED FOR PRELIMINARY DESIGN	MH
NO.	DATE	BY	REVISIONS
			ENG.

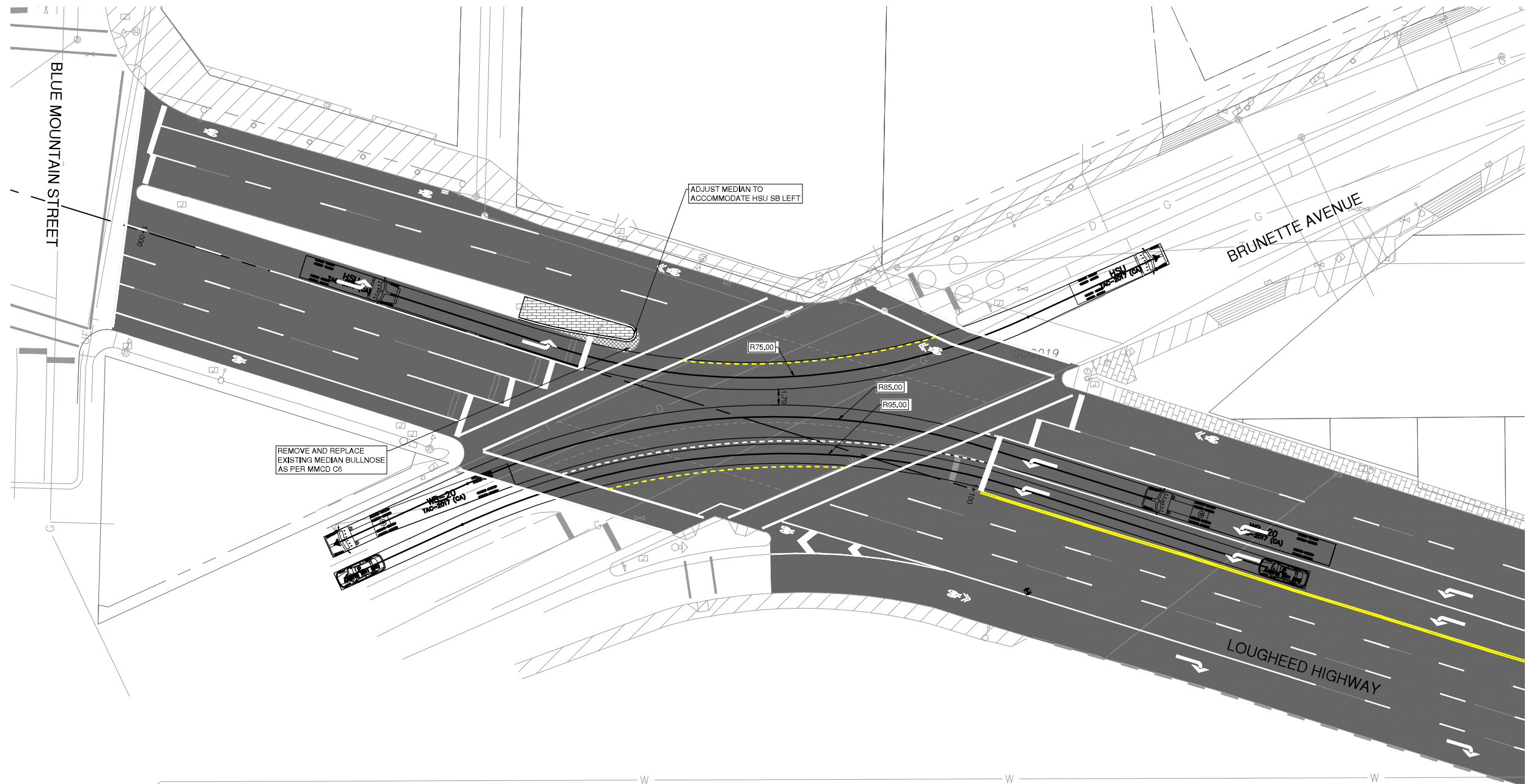
DESIGN BY	DATE
JK	APRIL 11, 2025
DRAWN BY	DATE
MWJ	APRIL 11, 2025
CHECKED BY	DATE
MH	APRIL 11, 2025
APPROVED BY	DATE
MH	APRIL 11, 2025

PERMIT TO PRACTICE
McElhanney Ltd.
PERMIT NUMBER: 1003299
Engineers and Geoscientists of BC

Suite 2300
13450 102nd Avenue
Surrey BC
Canada V3T 5X3
T 604 596 0361

SCALE HORIZ.	1:250	SCALE VERT.	1:25
SHEET	04	OF	05
ENG PROJECT NUMBER	2111-06538-00		

PROJECT	2025 PAVEMENT REHABILITATION
	LOUGHEED HIGHWAY
DESCRIPTION	ROADWORKS
	LOUGHEED HIGHWAY - STA. 1+220 TO STA. 1+318
FILE	06538-C1-100



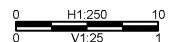
SURVEY CONTROL:

1. THE SURVEY IS ON A LOCAL GROUND COORDINATE SYSTEM.
2. THE ELEVATIONS ARE GEODETIC AND ARE IN METRES.
3. TO CONVERT TO NAD83 U.T.M. COORDINATES MULTIPLY BY THE COMBINED SCALE FACTOR OF 0.999987 ABOUT POINT 0.0.
4. GEODETIC ELEVATIONS ARE USED FROM G.P.S. OBSERVATION AT C00019 LOCATED AT INTERSECTION OF LOUGHEED HWY. AND BRUNETTE AVE., ELEVATION = 15.387m. DATUM IS CGVD08 (GVD 2013).

THIS DRAWING AND DESIGN IS THE PROPERTY OF McElhanney and shall not be used, reused or reproduced without the consent of McElhanney. McElhanney will not be held responsible for the improper or unauthorized use of this drawing and design.

THIS DRAWING AND DESIGN HAS BEEN PREPARED FOR THE CLIENT IDENTIFIED TO MEET THE STANDARDS AND REQUIREMENTS OF THE APPLICABLE PUBLIC AGENCIES AT THE TIME OF PREPARATION. McELHANNEY, ITS EMPLOYEES, SUBCONSULTANTS AND AGENTS WILL NOT BE LIABLE FOR ANY LOSSES OR OTHER CONSEQUENCES RESULTING FROM THE USE OR RELIANCE UPON OR ANY CHANGES MADE TO THE DRAWING BY ANY THIRD PARTY INCLUDING CONTRACTORS, SUPPLIERS, CONSULTANTS AND STAKEHOLDERS, OR THEIR EMPLOYEES OR AGENTS, WITHOUT McELHANNEY'S PRIOR WRITTEN CONSENT.

INFORMATION ON EXISTING UNDERGROUND FACILITIES MAY NOT BE COMPLETE OR ACCURATE. McELHANNEY, ITS EMPLOYEES AND DIRECTORS ARE NOT RESPONSIBLE NOR LIABLE FOR THE LOCATION OF ANY UNDERGROUND CONDUITS, PIPES, CABLES OR OTHER FACILITIES WHETHER SHOWN OR OMITTED FROM THIS PLAN. PRIOR TO CONSTRUCTION CONTRACTOR SHALL EXPOSE LOCATIONS OF ALL EXISTING FACILITIES BY HAND DUG OR HYDROLOC AND ADVISE THE ENGINEER OF ANY POTENTIAL CONFLICTS.



Edge of pavement	Hydrant	Sanitary service
Watermain and valve	Water air valve	Sanitary cleanout
Drainage sewer, MH	Water blowoff	Utility pole (joint pole)
Drainage ditch	Water service	Utility pole with light
Sanitary sewer, MH	Catch basin, top inlet	Streetlight, davit
Sanitary forcemain	Catch basin, side inlet	Streetlight, post top
Gasmain and valve	Catch basin, round	Comb signal pole
Hydro duct, MH	Drainage service	Traffic signal pole
Telephone duct, MH	Drainage cleanout	Traffic signal post

STAMP

Approved Sealed

NO.	DATE	BY	REVISIONS	ENG.
PB 2025.04.11	JK		ISSUED FOR TENDER	MH
PA 2025.03.07	JK		ISSUED FOR PRELIMINARY DESIGN	MH

DESIGN BY	JK	DATE	APRIL 11, 2025
DRAWN BY	MWJ	DATE	APRIL 11, 2025
CHECKED BY	MH	DATE	APRIL 11, 2025
APPROVED BY	MH	DATE	APRIL 11, 2025

**McElhanney**
Multi-disciplinary Ltd.
13450 102nd Avenue
Surrey BC
Canada V3T 5K3
T 604 596 0301

PERMIT TO PRACTICE
Permit Number: 1003299
Engineers and Geoscientists of BC

SCALE 1:250 HORIZ. SCALE 1:25 VERT.
SHEET 05 OF 05
ENG PROJECT NUMBER 2111-06538-00

PROJECT 2025 PAVEMENT REHABILITATION
LOUGHEED HIGHWAY
DESCRIPTION ROADWORKS
LOUGHEED & BRUNETTE INTERSECTION - TURNING MOVEMENTS
File: 06538-C1-100

Client:

CITY OF COQUITLAM

3000 GUILDFORD WAY, COQUITLAM

Description:

2025 PAVEMENT REHABILITATION

BRUNETTE AVENUE

ML Project No:

2111-06538-00

Client Project No:

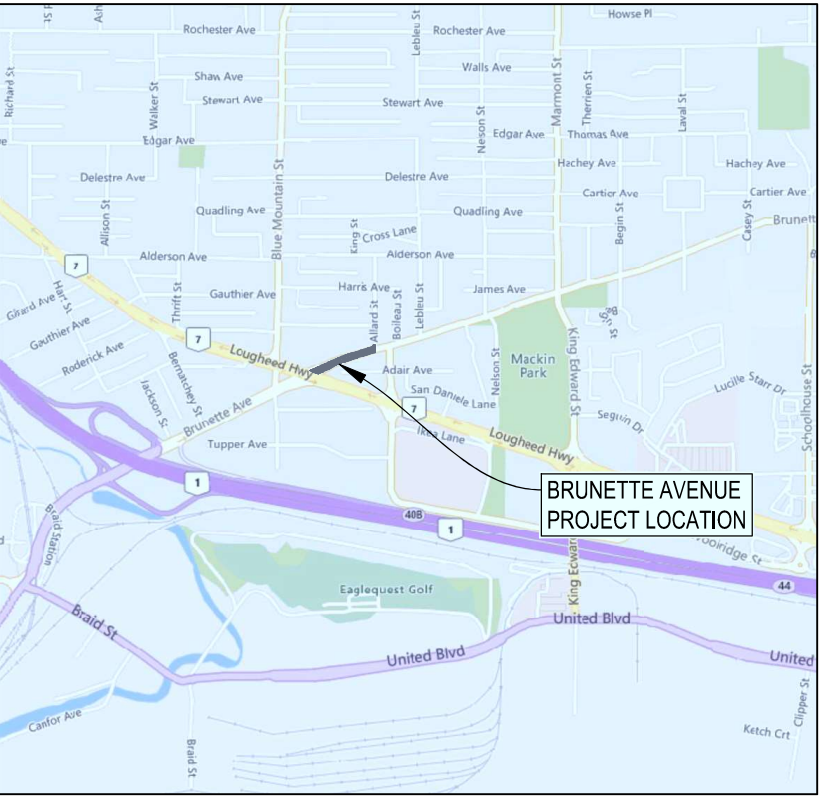
73389

ISSUED FOR TENDER
APRIL 11, 2025



McElhanney

Suite 2300
13450 102nd Avenue
Surrey BC
Canada V3T 5X3
T 604 596 0391



LOCATION PLAN
SCALE 1:10,000

DRAWING INDEX	
SHEET NUMBER	SHEET TITLE
00	COVER
01	SITE PLAN - BRUNETTE AVENUE
02	ROADWORKS - BRUNETTE AVENUE - STA. 0+988 TO STA. 1+113
03	ROADWORKS - BRUNETTE AVENUE - STA. 1+113 TO STA. 1+227



1. CONTACT & NOTIFY ALL HOMEOWNERS AFFECTED BY WORKS 4 WEEKS PRIOR TO CONSTRUCTION.
2. ALL CONSTRUCTION AND MATERIALS SHALL CONFORM TO MUNICIPALITY STANDARD SPECIFICATIONS AND DRAWINGS UNLESS OTHERWISE NOTED ON THIS DRAWING.
3. REPAIR AND/OR REPLACE ALL INFRASTRUCTURE/PRIVATE PROPERTY DAMAGED OR REMOVED DURING CONSTRUCTION, TO BETTER THAN, OR EQUAL TO PRE-CONSTRUCTION CONDITION.
4. REINSTATE ALL PRIVATE PROPERTY AND BOULEVARDS TO PRE-CONSTRUCTION CONDITIONS.
5. CONTACT MUNICIPALITY PARKS DEPARTMENT PRIOR TO WORKING IN AND AROUND TREES.
6. ENSURE THE CURRENT MUNICIPAL O.H.&S. GROUND DISTURBANCE PRACTICE AND PROCEDURES ARE FOLLOWED. CONTACT BC1 AT 1-800-474-6886 FOR EXTERNAL UTILITY LOCATIONS AT LEAST 72 HOURS PRIOR TO THE START OF CONSTRUCTION.
7. NOTIFY THOSE HOMEOWNERS WHO WILL BE AFFECTED BY CONSTRUCTION 48 HRS BEFORE BEGINNING WORKS.
8. CONFIRM LOCATION AND ELEVATION OF EXISTING UTILITIES AT ALL CROSSINGS AND CONNECTIONS PRIOR TO CONSTRUCTION.
9. ENSURE ALL EXISTING SERVICES STAY IN OPERATIONAL CONDITION DURING CONSTRUCTION.

USE BEST MANAGEMENT PRACTICES DURING CONSTRUCTION. ADJUST WORK ACTIVITIES DURING PERIODS OF HEAVY RAIN TO MINIMIZE SEDIMENTS ENTERING THE STORM DRAINAGE SYSTEM. SOME BMB'S TO CONSIDER:

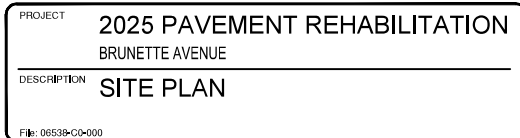
1. CHECK ALL EQUIPMENT FOR FLUID LEAKS PRIOR TO ENTERING THE WORK AREA.
2. NO EQUIPMENT RE-FUELING TO OCCUR IN THE WORK AREA UNLESS SPILL PROTECTION MEASURES ARE IN PLACE.
3. A SPILL KIT IS TO BE MAINTAINED ON SITE THROUGHOUT THE CONSTRUCTION PERIOD
4. SURFACE WATER IS TO BE MANAGED WITHIN THE WORK AREA AND TREATED BEFORE DISCHARGED. THIS MAY INCLUDE ONSITE DETENTION AND/OR CULVERT FILTRATION.
5. COVER EXPOSED SOILS IN INCLEMENT WEATHER ie TARP, HYDRO SEED OR OTHER EROSION CONTROL MEASURES.
6. STOCKPILE SOILS AWAY FROM CULVERT INLETS AND ENSURE THEY ARE COVERED IF LEFT FOR MORE THAN 48 HOURS.
7. SURROUND PROTECTED TREES WITH SNOW FENCING AT DRIP LINE OR CRITICAL ROOT ZONE OF TREE DURING CONSTRUCTION. CONTACT MUNICIPAL ARBORIST PRIOR TO BEGINNING CONSTRUCTION. INSTALL SILT FENCING AS PER DETAIL. A IN LOCATION SHOWN ON PLAN.

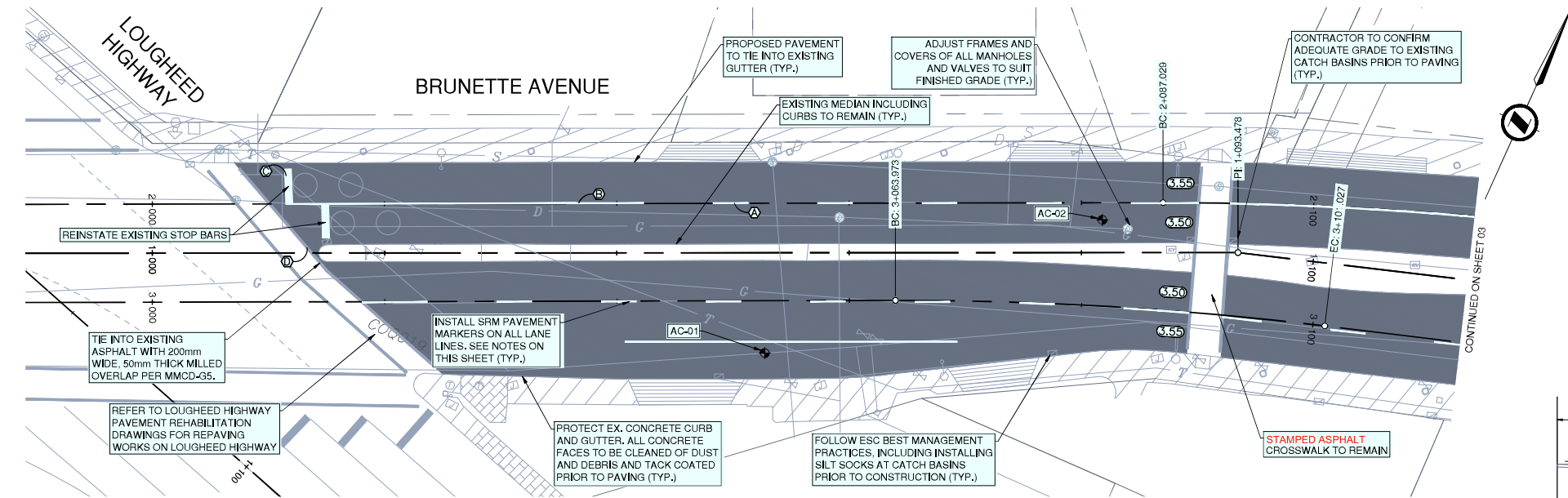
1. ALL WORKS TO CONFORM TO THE MASTER MUNICIPAL CONSTRUCTION DOCUMENTS (2009 EDITION - PLATINUM) AND ALL COQUITLAM APPROVED REVISIONS, AND TO THE CURRENT EDITION OF THE CITY OF COQUITLAM SUPPLEMENTAL SPECIFICATIONS AND STANDARD DETAIL DRAWINGS
2. CHANGES OF GRADE AND DIRECTION FORMED BY SMOOTH VERTICAL AND HORIZONTAL CURVES.
3. ALL EXISTING MANHOLE FRAMES, WATER AND GAS VALVE BOXES, SURVEY MONUMENT BOXES ETC. TO BE ADJUSTED TO SUIT NEW PAVEMENT GRADE AND CROSS-FALL
4. CONTRACTOR TO VERIFY MINIMUM 2% CROSS-FALL PRIOR TO PAVING
5. CONTRACTOR IS RESPONSIBLE TO REPAIR ANY DAMAGE TO THE CURB, SIDEWALK, OR DRIVEWAYS DAMAGED BY THE MILLING OR PAVING OPERATION
6. RECESSED PAVEMENT MARKERS WILL BE INSTALLED BY OTHERS AFTER CONSTRUCTION.

1. ALL PAVEMENT MARKINGS AND SIGNAGE AS PER THE MANUAL
UNIFORM TRAFFIC CONTROL DEVICES FOR CANADA
2. ALL PAVEMENT MARKINGS ARE THERMOPLASTIC

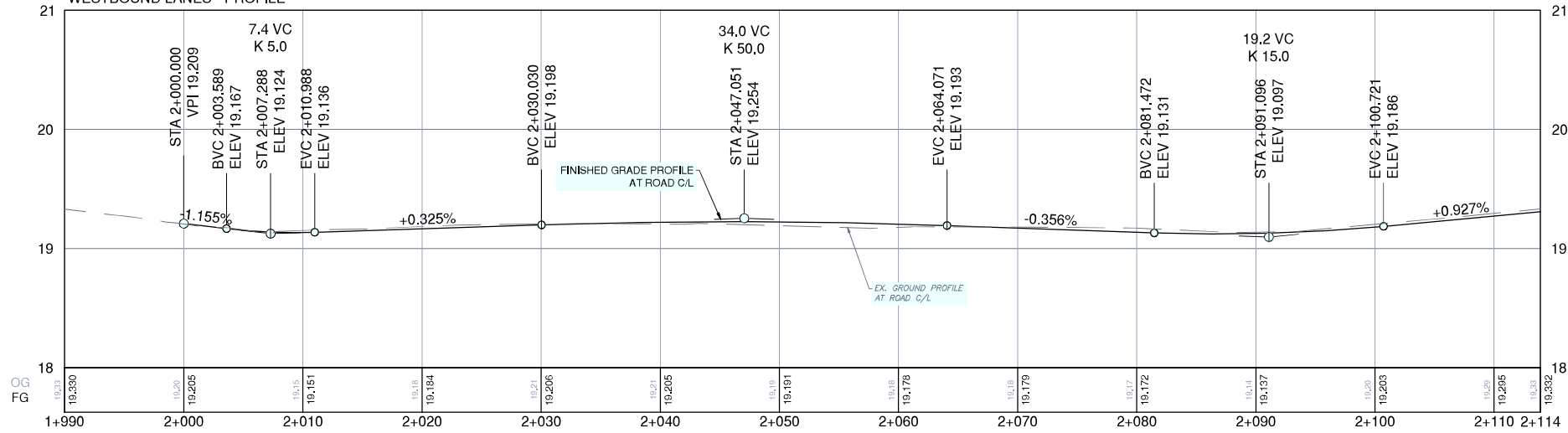
THIS DRAWING AND DESIGN HAS BEEN PREPARED FOR THE CLIENT IDENTIFIED, TO MEET THE STANDARDS AND REQUIREMENTS OF THE APPLICABLE PUBLIC AGENCIES AT THE TIME OF PREPARATION, McELHANNNEY, ITS EMPLOYEES, SUBCONSULTANTS AND AGENTS WILL NOT BE LIABLE FOR ANY LOSSES OR OTHER CONSEQUENCES RESULTING FROM THE USE OR RELIANCE UPON, OR ANY CHANGES MADE TO, THIS DRAWING, BY ANY THIRD PARTY, INCLUDING CONTRACTORS, SUPPLIERS, CONSULTANTS AND STAKEHOLDERS, OR THEIR EMPLOYEES OR AGENTS, WITHOUT McELHANNNEY'S PRIOR WRITTEN CONSENT.

INFORMATION ON EXISTING UNDERGROUND FACILITIES MAY NOT BE COMPLETE OR ACCURATE. McELHANNNEY, ITS EMPLOYEES AND DIRECTORS ARE NOT RESPONSIBLE NOR LIABLE FOR THE LOCATION OF ANY UNDERGROUND CONDUITS, PIPES, CABLES OR OTHER FACILITIES WHETHER SHOWN OR OMITTED FROM THIS PLAN. PRIOR TO CONSTRUCTION CONTRACTOR SHALL EXPOSE LOCATIONS OF ALL EXISTING FACILITIES BY HAND DIGGING OR HYDROVAC AND ADVISE THE ENGINEER OF POTENTIAL CONFLICTS.

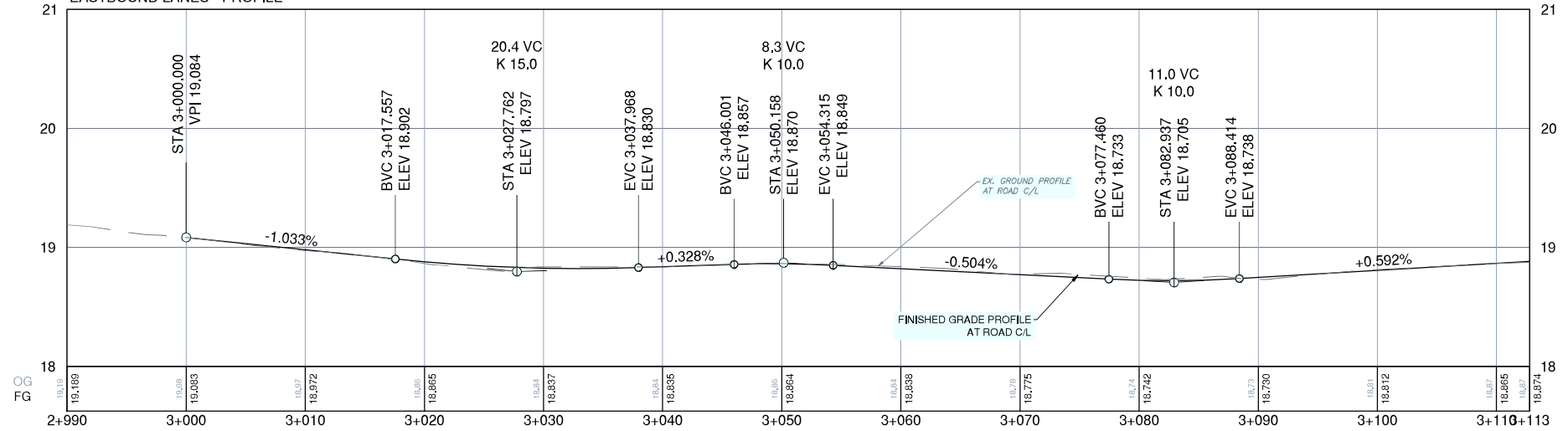




WESTBOUND LANES - PROFILE



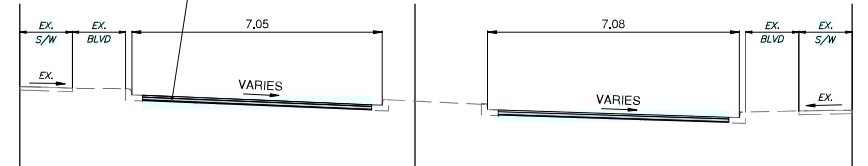
EASTBOUND LANES - PROFILE



SNOW-PLOWABLE RECESSED PAVEMENT MARKERS (SRM) NOTES:

- NO SRM'S TO BE INSTALLED ALONG EXISTING AND PROPOSED ROAD SHOULDER WHITE FOG LINES
- SRM'S TO MATCH COLOR OF LANE PAVEMENT MARKING
- SRM'S TO BE PLACED 300mm IN ADVANCE OF BROKEN/DASHED LINES
- SRM'S TO BE OFFSET 50mm TO THE RIGHT OF SOLID LINES
- SRM'S TO BE SPACED AS FOLLOWS:
 - EXISTING AND PROPOSED BROKEN LANE LINES - 26m
 - EXISTING AND PROPOSED SOLID LANE LINES - 26m
 - PROPOSED SOLID EDGE LINES - 26m
 - EXISTING AND PROPOSED DECELERATION DASHED LINES - 12m
 - SOLID INTERSECTION APPROACH LINES - 12m
- WHERE PAVEMENT MARKING LENGTHS ARE NOT SUFFICIENT FOR DESCRIBED SPACING, SRM'S ARE TO BE INSTALLED AT THE BEGINNING AND END OF THE PAVEMENT MARKING
- TOP OF REFLECTORS TO BE RECESSED BELOW THE ASPHALT SURFACE WITHIN A MILLED SLOT AS PER BC MOT MANUAL OF STANDARD TRAFFIC SIGNS AND PAVEMENT MARKINGS, CHAPTER 7.5.1
- RECESSED PAVEMENT MARKERS TYPE TO MATCH EXISTING (EXCLUDES METAL CRADLE)

FULL DEPTH ASPHALT MILLING (MIN 150mm OR TO EXISTING ASPHALT THICKNESS). INSTALL MIN. 25mm OF 25mm MINUS CRUSHED GRANULAR BASE AND PAVE WITH 75mm THICK MMCD LC#1 (LOWER COURSE) AND 50mm THICK 19mm MOTI CLASS 1 MEDIUM MIX 80-100 GROUP ASPHALT (UPPER COURSE). CONTRACTOR TO PROOF ROLL AND REPAIR ROAD BASE STRUCTURE AS DIRECTED BY CITY INSPECTOR. WHERE DIRECTED, CONTRACTOR TO EXCAVATE EXISTING BASE AND REPLACE WITH 25mm MINUS CRUSHED GRANULAR BASE AND/OR 75mm MINUS CRUSHED GRANULAR SUBBASE AS DIRECTED BY CA (TYP.)



FULL DEPTH MILLING AND PAVING
TYPICAL CROSS SECTION

REMOVE TACK COAT FROM PAINTED PAVEMENT MARKINGS OR RETOUCH PAINT WITHIN 10m OF PAVING LIMITS (INCIDENTAL, TYPICAL)

ASPHALT CORES

NO.	TOP LIFT	BOTTOM LIFT	TOTAL ASPHALT THICKNESS
AC-01	50mm	80mm	130mm
AC-02	45mm	50mm	95mm

KEY NOTES

- 100mm WHITE BROKEN LANE LINE (3.6.3)
- 100mm WHITE SOLID LINE
- 600mm WHITE STOP BAR
- 200mm WHITE CROSSWALK LINE
- WHITE LEFT-TURN ARROW

LEGEND

FULL DEPTH MILLING AND PAVING

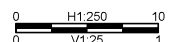
SURVEY CONTROL:

- THE SURVEY IS ON A LOCAL GROUND COORDINATE SYSTEM.
- THE ELEVATIONS ARE GEODETIC AND ARE IN METRES.
- TO CONVERT TO NAD83 UTM COORDINATES, MULTIPLY BY THE COMBINED SCALE FACTOR OF 0.999987 ABOUT POINT 0.0.
- GEODETIC ELEVATIONS ARE DERIVED FROM G.P.S. OBSERVATION AT C02019 LOCATED AT INTERSECTION OF LOUGHEED HWY. AND BRUNETTE AVE., ELEVATION = 15.87m, DATUM IS ICD008 (ICD08 2018).

THIS DRAWING AND DESIGN IS THE PROPERTY OF McElhanney and shall not be used, reused or reproduced without the consent of McElhanney. McElhanney will not be held responsible for the improper or unauthorized use of this drawing and design.

THIS DRAWING AND DESIGN HAS BEEN PREPARED FOR THE CLIENT IDENTIFIED. TO MEET THE STANDARDS AND REQUIREMENTS OF THE APPLICABLE PUBLIC ACTS AS AT THE TIME OF PREPARATION. McELHANEY, ITS EMPLOYEES, SUBCONSULTANTS AND AGENTS WILL NOT BE LIABLE FOR ANY LOSSES OR OTHER CONSEQUENCES RESULTING FROM THE USE OR RELIANCE UPON, OR ANY CHANGES MADE TO THIS DRAWING BY ANY THIRD PARTY INCLUDING CONTRACTORS, SUPPLIERS, CONSULTANTS AND STAKEHOLDERS, OR THEIR EMPLOYEES OR AGENTS, WITHOUT McELHANEY'S PRIOR WRITTEN CONSENT.

INFORMATION ON EXISTING UNDERGROUND FACILITIES MAY NOT BE COMPLETE OR ACCURATE. McELHANEY, ITS EMPLOYEES AND DIRECTORS ARE NOT RESPONSIBLE NOR LIABLE FOR THE LOCATION OF ANY UNDERGROUND CONDUITS, PIPES, CABLES OR OTHER FACILITIES WHETHER KNOWN OR UNKNOWN FROM THIS PLAN. PRIOR TO CONSTRUCTION CONTRACTOR SHALL EXPOSE LOCATIONS OF ALL EXISTING FACILITIES BY HAND DIGGING OR HYDROLOC AND ADVISE THE ENGINEER OF ANY POTENTIAL CONFLICTS.



Edge of pavement	Hydrant	Sanitary service
Watermain and valve	Water air valve	Sanitary cleanout
Drainage sewer, MH	Water blowoff	Utility pole (joint pole)
Drainage ditch	Water service	Utility pole with light
Sanitary sewer, MH	Catch basin, top inlet	Streetlight, davit
Sanitary forcemain	Catch basin, side inlet	Streetlight, post top
Gasmain and valve	Comb signal pole	Comb signal pole
Hydro duct, MH	Drainage service	Traffic signal pole
Telephone duct, MH	Drainage cleanout	Traffic signal post

STAMP
Approved Sealed

NO.	DATE	BY	REVISIONS
PB 2025.04.11	JK	ISSUED FOR TENDER	MH
PA 2025.03.07	JK	RECORD DRAWING SUBMISSION	MH
			ENG.

DESIGN BY	DATE
JK	APRIL 11, 2025
DRAWN BY	DATE
MWJ	APRIL 11, 2025
CHECKED BY	DATE
MH	APRIL 11, 2025
APPROVED BY	DATE
MH	APRIL 11, 2025

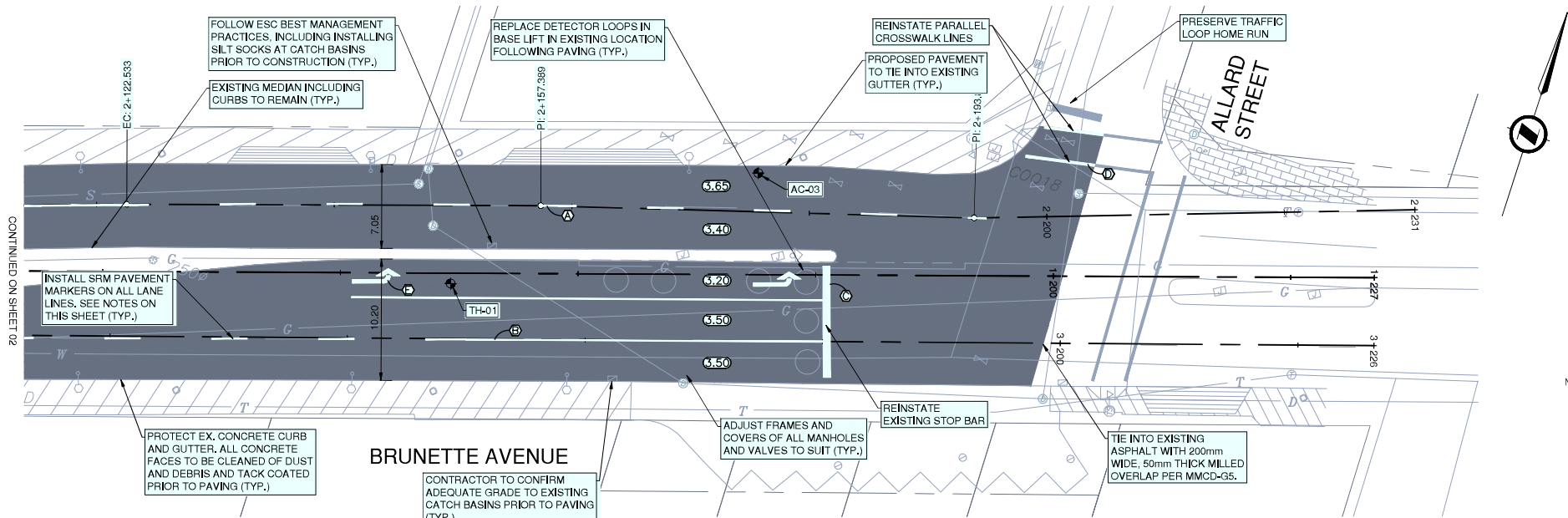


PERMIT TO PRACTICE
McElhanney Ltd.
PERMIT NUMBER: 1003299
Engineers and Geoscientists of BC

Suite 2300
13450 102nd Avenue
Surrey BC
Canada V3T 5X3
T 604 596 0391

SCALE HORIZ. 1:250 SCALE VERT. 1:25
SHEET 02 OF 03
ENG PROJECT NUMBER 2111-06538-00

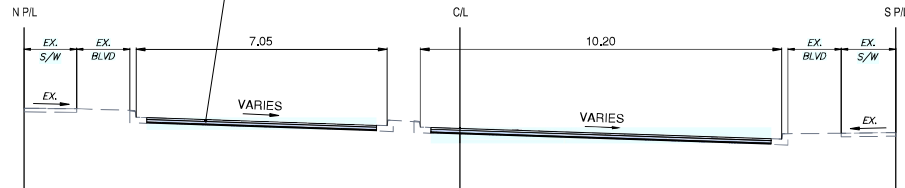
PROJECT	2025 PAVEMENT REHABILITATION
DESCRIPTION	BRUNETTE AVENUE ROADWORKS BRUNETTE AVENUE - STA. 0+988 TO STA. 1+113
FILE	06538-CD-100



SNOW-PLOWABLE RECESSED PAVEMENT MARKERS (SRM) NOTES:

- NO SRM'S TO BE INSTALLED ALONG EXISTING AND PROPOSED ROAD SHOULDER WHITE FOG LINES
- SRM'S TO MATCH COLOR OF LANE PAVEMENT MARKING
- SRM'S TO BE PLACED 300mm IN ADVANCE OF BROKEN/DASHED LINES
- SRM'S TO BE OFFSET 50mm TO THE RIGHT OF SOLID LINES
- SRM'S TO BE SPACED AS FOLLOWS:
 - EXISTING AND PROPOSED BROKEN LANE LINES - 26m
 - EXISTING AND PROPOSED SOLID LANE LINES - 26m
 - PROPOSED SOLID EDGE LINES - 26m
 - EXISTING AND PROPOSED DECELERATION DASHED LINES - 12m
 - SOLID INTERSECTION APPROACH LINES - 12m
- WHERE PAVEMENT MARKING LENGTHS ARE NOT SUFFICIENT FOR DESCRIBED SPACING, SRM'S ARE TO BE INSTALLED AT THE BEGINNING AND END OF THE PAVEMENT MARKING
- TOP OF REFLECTORS TO BE RECESSED BELOW THE ASPHALT SURFACE WITHIN A MILLED SLOT AS PER BC MOT MANUAL OF STANDARD TRAFFIC SIGNS AND PAVEMENT MARKINGS, CHAPTER 7.5.1
- RECESSED PAVEMENT MARKERS TYPE TO MATCH EXISTING (EXCLUDES METAL CRADLE)

FULL DEPTH ASPHALT MILLING (MIN 150mm OR TO EXISTING ASPHALT THICKNESS). INSTALL MIN. 25mm OF 25mm MINUS CRUSHED GRANULAR BASE AND PAVE WITH 75mm THICK MMCD LG#1 (LOWER COURSE) AND 50mm THICK 19mm MOTI CLASS 1 MEDIUM MIX 80-100 GROUP ASPHALT (UPPER COURSE). CONTRACTOR TO PROOF ROLL AND REPAIR ROAD BASE STRUCTURE AS DIRECTED BY CITY INSPECTOR, WHERE DIRECTED, CONTRACTOR TO EXCAVATE EXISTING BASE AND REPLACE WITH 25mm MINUS CRUSHED GRANULAR BASE AND/OR 75mm MINUS CRUSHED GRANULAR SUBBASE AS DIRECTED BY CA (TYP.)



FULL DEPTH MILLING AND PAVING TYPICAL CROSS SECTION

REMOVE TACK COAT FROM PAINTED PAVEMENT MARKINGS OR RETOUCH PAINT WITHIN 10m OF PAVING LIMITS (INCIDENTAL, TYPICAL)

TEST HOLE - 01

DESCRIPTION	LAYER THICKNESS
ASPHALTIC CONCRETE	0-130mm
ROAD BASE	130-250mm
TAN SAND AND GRAVEL (DENSE)	250mm-1m

ASPHALT CORES

NO.	TOP LIFT	BOTTOM LIFT	TOTAL ASPHALT THICKNESS
AC-03	65mm	60mm	125mm

KEY NOTES

- 100mm WHITE BROKEN LANE LINE (3:6:3)
- 100mm WHITE SOLID LINE
- 600mm WHITE STOP BAR
- 200mm WHITE CROSSWALK LINE
- WHITE LEFT-TURN ARROW

LEGEND

FULL DEPTH MILLING AND PAVING

SURVEY CONTROL:

- THE SURVEY IS ON A LOCAL GROUND COORDINATE SYSTEM.
- THE ELEVATIONS ARE GEODETIC AND ARE IN METRES.
- TO CONVERT TO NAD83 UTM COORDINATES MULTIPLY BY THE COMBINED SCALE FACTOR OF 0.999987 ABOUT POINT 0.0
- GEODETIC ELEVATIONS ARE DERIVED FROM G.P.S. OBSERVATION AT COORDINATES LOCATED AT INTERSECTION OF LOUGHEED HWY. AND BRUNETTE AVE., ELEVATION = 15.87m, DATUM IS ICDVD08 (ICVD 2018).

THIS DRAWING AND DESIGN IS THE PROPERTY OF McELHANNEY AND SHALL NOT BE USED, REUSED OR REPRODUCED WITHOUT THE CONSENT OF McELHANNEY. McELHANNEY WILL NOT BE HELD RESPONSIBLE FOR THE IMPROPER OR UNAUTHORIZED USE OF THIS DRAWING AND DESIGN.

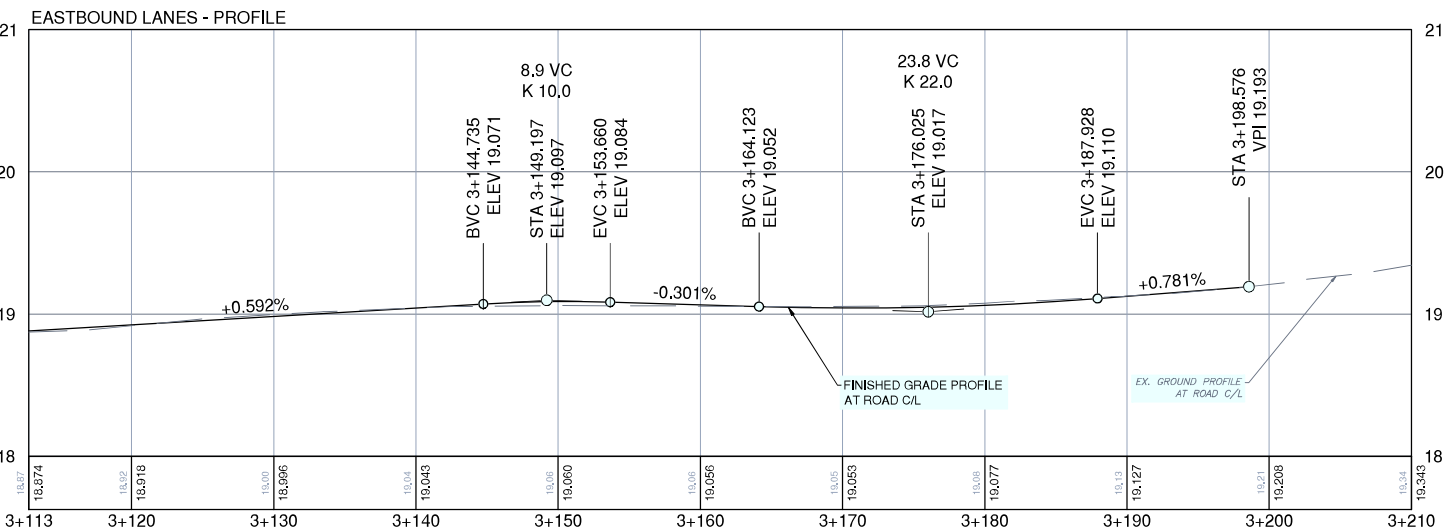
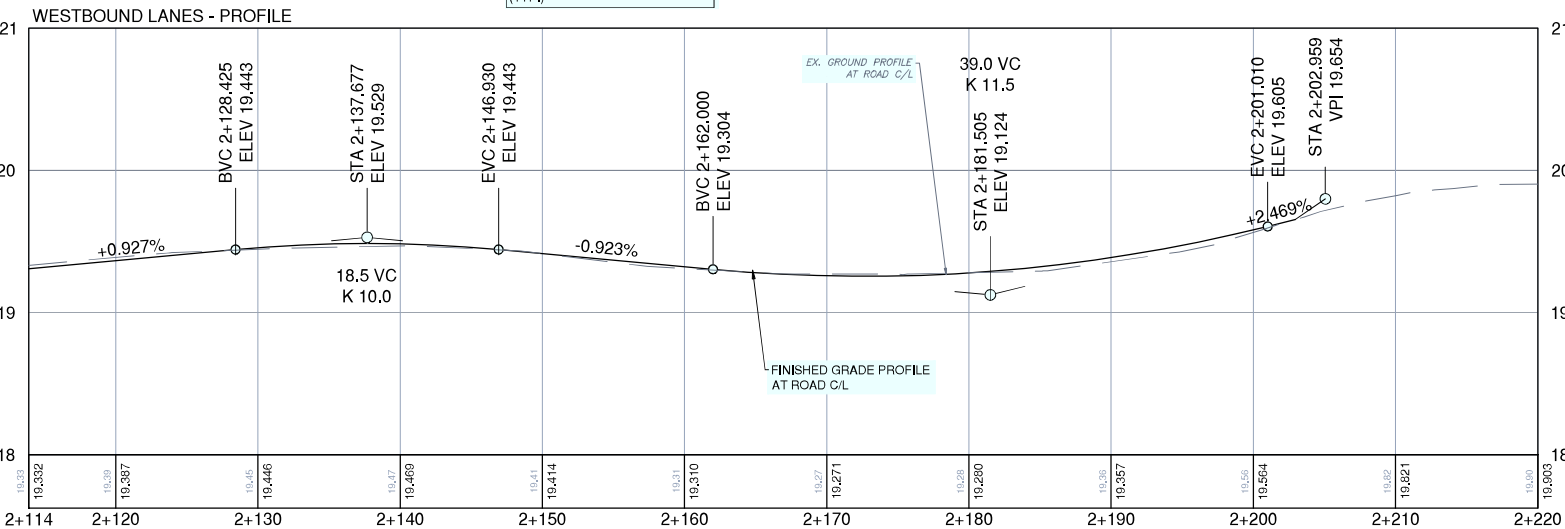
THIS DRAWING AND DESIGN HAS BEEN PREPARED FOR THE CLIENT IDENTIFIED, TO MEET THE STANDARDS AND REQUIREMENTS OF THE APPLICABLE PUBLIC, ASSIGNED AT THE TIME OF PREPARATION. McELHANNEY, ITS EMPLOYEES, SUBCONSULTANTS AND AGENTS WILL NOT BE LIABLE FOR ANY LOSSES OR OTHER CONSEQUENCES RESULTING FROM THE USE OR RELIANCE UPON OR ANY CHANGES MADE TO THIS DRAWING BY ANY THIRD PARTY INCLUDING CONTRACTORS, SUPPLIERS, CONSULTANTS AND STAKEHOLDERS, OR THEIR EMPLOYEES OR AGENTS, WITHOUT McELHANNEY'S PRIOR WRITTEN CONSENT.

INFORMATION ON EXISTING UNDERGROUND FACILITIES MAY NOT BE COMPLETE OR ACCURATE. McELHANNEY, ITS EMPLOYEES AND DIRECTORS ARE NOT RESPONSIBLE NOR LIABLE FOR THE LOCATION OF ANY UNDERGROUND CONDUITS, PIPES, CABLES OR OTHER FACILITIES WHETHER KNOWN OR UNKNOWN TO THIS PLAN. PRIOR TO CONSTRUCTION CONTRACTOR SHALL EXPOSE LOCATIONS OF ALL EXISTING FACILITIES BY HAND DIGGING OR HYDROLOC AND ADVISE THE ENGINEER OF ANY POTENTIAL CONFLICTS.



SCALE 1:250 HORIZ. SCALE 1:25 VERT.

PROJECT 2025 PAVEMENT REHABILITATION
BRUNETTE AVENUE
DESCRIPTION ROADWORKS
BRUNETTE AVENUE - STA. 1+113 TO STA. 1+227
FILE: 06538-CD-100



Edge of pavement	Hydrant	Sanitary service
Watermain and valve	Water air valve	Sanitary cleanout
Drainage sewer, MH	Water blowoff	Utility pole (joint pole)
Drainage ditch	Water service	Utility pole with light
Sanitary sewer, MH	Catch basin, top inlet	Streetlight, davit
Sanitary forcemain	Catch basin, side inlet	Streetlight, post top
Gasmain and valve	Comb signal pole	Traffic signal pole
Hydro duct, MH	Drainage service	Traffic signal post
Telephone duct, MH	Drainage cleanout	

STAMP

NO.	DATE	BY	REVISIONS	ENG.
PB 2025.04.11	JK		ISSUED FOR TENDER	MH
PA 2025.03.07	JK		RECORD DRAWING SUBMISSION	MH

DESIGN BY	DATE
JK	APRIL 11, 2025
DRAWN BY	DATE
MWJ	APRIL 11, 2025
CHECKED BY	DATE
MH	APRIL 11, 2025
APPROVED BY	DATE
MH	APRIL 11, 2025



PERMIT TO PRACTICE
McElhanney Ltd.
PERMIT NUMBER: 1003299
Engineers and Geoscientists of BC

Suite 2300
13450 102nd Avenue
Surrey BC
Canada V3T 5X3
T 604 596 0391

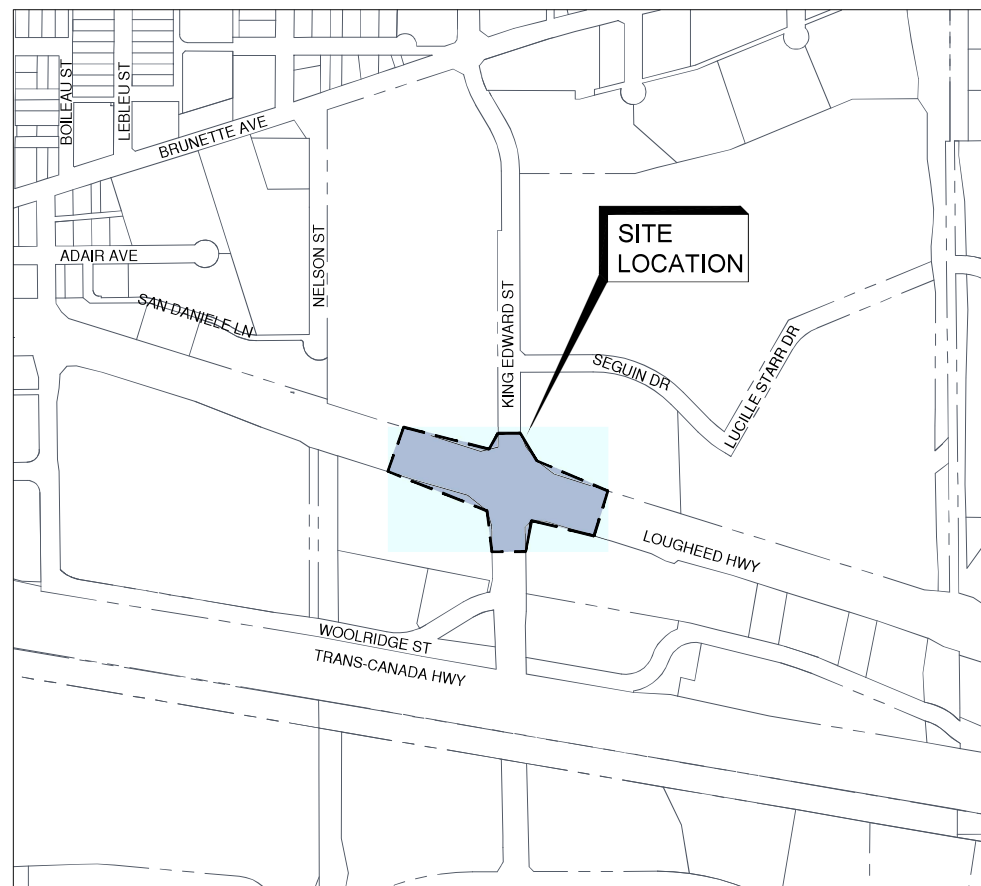


73389 - LOUGHEED HIGHWAY / UNITED BOULEVARD

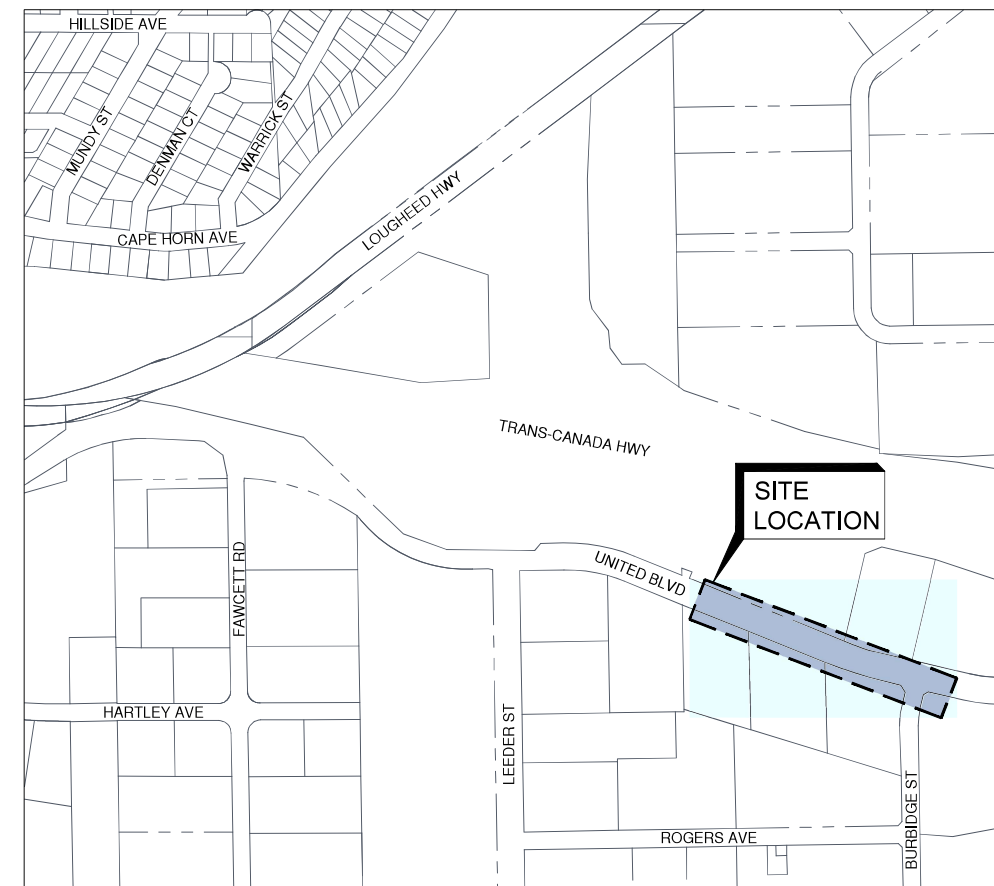
PAVEMENT REHABILITATION

ISSUED FOR TENDER

DRAWING SCHEDULE		
DWG. NO	SHEET TITLE	REV. NO
00	COVER	
01	GENERAL NOTES	B
02	LOUGHEED HWY AND KING EDWARD ST INTERSECTION	B
03	UNITED BOULEVARD	D



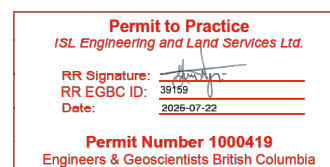
SITE PLAN
LOUGHEED HIGHWAY / KING EDWARD STREET
NTS



SITE PLAN
UNITED BOULEVARD
NTS



#201, 3999 Henning Drive, Burnaby, B.C. V5C 6P9
T: (604)629-2696 F: (604)629-2698



GENERAL NOTES:

1. ALL CONSTRUCTION AND MATERIALS SHALL BE IN ACCORDANCE WITH:
 - THE MASTER MUNICIPAL CONSTRUCTION DOCUMENT AND STANDARD DETAIL DRAWINGS (MMCD 2019) LATEST EDITION (PLATINUM EDITION) AND CITY OF COQUITLAM SUPPLEMENTARY SPECIFICATIONS AND DETAILED DRAWINGS UNLESS OTHERWISE NOTED;
 - CONSTRUCTION PLANS, ACCEPTED AND SIGNED BY THE CITY OF COQUITLAM;
 - APPLICABLE CONTRACT DOCUMENTS AND ALL SPECIFICATIONS REFERENCED THEREIN;
 - MINISTRY OF TRANSPORTATION "BC TRAFFIC CONTROL MANUAL FOR WORK ON ROADWAYS", LATEST EDITION; AND
 - WORKSAFEBC, LATEST EDITION.

THE CONTRACTOR SHALL MAINTAIN ON SITE COPIES OF THE ABOVE DOCUMENTS AND SHALL ENSURE THAT ALL SUB CONTRACTORS ARE THOROUGHLY FAMILIAR WITH THE APPLICABLE SECTIONS OF THE DOCUMENTS.
2. THE CONTRACTOR SHALL REPAIR OR REPLACE ANY EXISTING ROAD SURFACES, SERVICES, SIGNS, LANDSCAPING, DRIVEWAY LETDOWNS, PRIVATE LANDSCAPING, OR PRIVATE IMPROVEMENTS THAT MAY BE DAMAGED AS A RESULT OF CONSTRUCTION, REPAIRS TO EXISTING CITY SERVICES SUCH AS WATER, SANITARY SEWER, STORM SEWER, AND STREET OR TRAFFIC LIGHTING SHALL BE MADE BY THE OWNER AT COST TO THE CONTRACTOR, REPAIRS TO EXISTING SURFACE WORKS MAY BE DONE BY THE CONTRACTOR AT THE DISCRETION OF THE CONTRACT ADMINISTRATOR,
3. THE LOCATION OF EXISTING UTILITIES IS COMPILED FROM OWNER AND UTILITY SUPPLIED RECORD DRAWINGS AND ARE CONSIDERED APPROXIMATE ONLY. THE EXACT LOCATION AND EXTENT OF UTILITIES SHOULD BE DETERMINED BY CONSULTING THE LOCAL AUTHORITIES AND UTILITY COMPANIES CONCERNED. THE CONTRACTOR SHALL VERIFY THE EXACT LOCATION AND INVERT ELEVATION BY HAND OR HYDROVAC EXCAVATION BEFORE CONSTRUCTION OF UTILITY CROSSINGS AND SHALL BE RESPONSIBLE FOR RESTORATION OF ANY DAMAGE TO EXISTING UTILITIES. ANY COSTS ASSOCIATED WITH UTILITY CONFLICTS THAT WERE NOT PRELOCATED WILL BE THE CONTRACTORS RESPONSIBILITY.
4. REPORT ANY DISCREPANCIES TO THE CONTRACT ADMINISTRATOR A MIN 72 HOURS PRIOR TO CONSTRUCTION.
5. RESTORATION OF ITEMS NOT SPECIFICALLY IDENTIFIED IN THE SCHEDULE OF QUANTITIES SHALL BE INCLUDED IN THE PAY ITEM MOST CLOSELY MATCHING THE WORK REQUIRED.
6. ALL SURVEY MONUMENTS, SURVEY PINS, OR LEAD PLUGS WITHIN THE PROJECT BOUNDARIES SHALL BE PROTECTED DURING THE COURSE OF THE WORK. SHOULD ANY SURVEY MONUMENT REQUIRE RAISING OR RELOCATION, THE CONTRACTOR SHALL NOTIFY THE OWNER'S ENGINEERING AND OPERATIONS DEPARTMENT AT LEAST FIVE (5) BUSINESS DAYS IN ADVANCE OF SCHEDULING WORK.
7. ALL ELEVATIONS ARE GEODETIC AND REFERENCED TO INTEGRATED SURVEY MONUMENT ELEVATIONS LOCATED ON ROAD RIGHT-OF-WAYS.
8. ALL PUBLIC ROADWAYS AFFECTED BY THE WORKS SHALL BE KEPT IN A CLEAN STATE AT ALL TIMES AND FREE OF EQUIPMENT AND MATERIALS AT ALL TIMES WHEN CONSTRUCTION ACTIVITY IS NOT UNDERWAY. DUST CONTROL MEASURES SHALL ALSO BE EMPLOYED AS DIRECTED BY THE CONTRACT ADMINISTRATOR.
9. THE CONTRACTOR IS SOLELY RESPONSIBLE FOR CONSTRUCTION MEANS, METHODS, TECHNIQUES, SEQUENCES AND PROCEDURES, AND FOR COORDINATING THE VARIOUS PARTS OF THE WORK. THE CONTRACTOR IS RESPONSIBLE TO ENSURE THAT THERE IS NO DISRUPTION TO SERVICE, AND IF DISRUPTION IS ANTICIPATED, TO NOTIFY THE CONTRACT ADMINISTRATOR A MINIMUM OF 72 HOURS PRIOR, AND OBTAIN APPROVAL FOR THE DISRUPTION. ANY REQUIREMENTS FOR TEMPORARY WATER SERVICE ARE TO BE INCLUDED IN THE CONTRACTORS METHODOLOGY.
10. ALL ABANDONED CATCHBASIN LEADS SHALL BE SEALED WITH NON-SHRINKING GROUT.
11. ALL SINGLE CATCHBASINS LEADS TO BE 150mm IN DIAMETER SDR 28 PVC INSTALLED AT A MINIMUM SLOPE OF 2.0% SLOPE UNLESS OTHERWISE NOTED.

TRAFFIC MANAGEMENT, NOTIFICATION AND APPROVALS NOTES:

1. THE CONTRACTOR SHALL PROVIDE CONSTRUCTION SIGNAGE, BARRIERS, FLASHING INDICATORS ACCORDING TO MOT, BC TRAFFIC CONTROL MANUAL, ETC, AT ALL TIMES TO ENSURE THE SAFETY OF THE PUBLIC. TRAFFIC CONTROL WILL BE REQUIRED FOR ALL CONSTRUCTION WORKS WITHIN THE TRAVELED PORTION OF THE ROAD. NO ROAD SHALL BE CLOSED WITHOUT THE WRITTEN CONSENT OF THE DIRECTOR OF ENGINEERING AND OPERATIONS.
2. THE CONTRACTOR SHALL BE RESPONSIBLE FOR THE DISPOSAL OF ALL EXCAVATED MATERIAL UNSUITABLE FOR REUSE AT A SUITABLE OFF-SITE DISPOSAL AREA, IN ACCORDANCE WITH ALL APPLICABLE REGULATIONS.
3. THE CONTRACTOR SHALL ENSURE THAT ALL APPROVALS REQUIRED FOR THE PROPOSED WORKS HAVE BEEN OBTAINED FROM ALL AUTHORITIES AND AGENCIES PRIOR TO COMMENCING THE WORK.
4. THE CONTRACTOR SHALL ARRANGE FOR, AND COORDINATE THE WORKS DONE BY:

A) OWNER; AND

B) FRANCHISE UTILITIES.
5. THE CONTRACTOR SHALL MAKE CONTACT WITH THE APPROPRIATE PERSONNEL AT LEAST 72 HOURS PRIOR TO THE WORK, SCHEDULING AND OTHER CONSTRUCTION CONSTRAINTS IMPOSED BY THESE WORKS SHALL BE TAKEN INTO ACCOUNT.
6. RESIDENTS DIRECTLY AFFECTED BY CONSTRUCTION OF THESE WORKS AND SERVICES SHALL BE GIVEN MINIMUM 5 DAYS WRITTEN NOTICE OF THE PROPOSED START OF CONSTRUCTION. THE CONTRACTOR IS TO DISTRIBUTE A NOTICE OF CONSTRUCTION LETTER TO ALL AFFECTED RESIDENTS AND BUSINESSES. LETTER TO DIRECT INQUIRIES TO CONTRACT ADMINISTRATOR. FOLLOWING CONSTRUCTION ACTIVITY ON ANY PRIVATE PROPERTY, A WRITTEN RELEASE MAY BE REQUIRED FROM THE PROPERTY OWNER AT THE DISCRETION OF THE OWNER.
7. APPROVALS FOR REQUIRED TREE CUTTING OR TRIMMING NOT INDICATED IN CONTRACT DRAWINGS SHALL BE OBTAINED BY THE CONTRACTOR FROM THE OWNER PRIOR TO WORK BEING PERFORMED.
8. ALL TRAFFIC CONTROL TO CONFORM TO THE LATEST EDITION OF THE "BC TRAFFIC CONTROL MANUAL FOR WORK ON ROADWAYS".
9. APPROVAL OF NOISE VARIANCE FOR ALL WORK OUTSIDE OF NORMAL APPROVED WORK HOURS REQUIRED BY THE OWNER.
10. THE CONTRACTOR WILL BE RESPONSIBLE FOR COMPLETION OF ALL TAPED TEMPORARY AND PERMANENT PAINT AND THERMOPLASTIC PAVEMENT MARKINGS IN THE PLACE OF THE WORK. THE OWNER WILL NOT BE PROVIDING ROAD MARKING DRAWINGS FOR THE INSTALLATION OF PERMANENT MARKINGS. THE CONTRACTOR SHALL THEREFORE BE REQUIRED TO PERFORM ANY PRE AND POST-CONSTRUCTION SURVEY WORK ESSENTIAL FOR THE REINSTATEMENT OF PERMANENT PAVEMENT MARKINGS TO THEIR PRE-CONSTRUCTION LOCATIONS. TEMPORARY PAVEMENT MARKINGS ARE TO BE PLACED DAILY. PERMANENT LANE MARKINGS ARE TO BE PLACED WITHIN SEVENTY-TWO (72) HOURS OF FINAL PAVING AND PERMANENT THERMOPLASTIC PAVEMENT MARKINGS ARE TO BE PLACED WITHIN FIVE (5) DAYS OF FINAL PAVING.
11. ALL TEMPORARY MARKINGS ARE TO BE REMOVED IMMEDIATELY FOLLOWING INSTALLATION OF THE PERMANENT MARKINGS.

ISSUED FOR TENDER

DESIGN NO.

34157

REV NO.	REVISION DESCRIPTION	DATE	DRAWN	APPRD.
A	DETAILED DESIGN	2025/03/07	DW	GA
B	ISSUED FOR TENDER	2025/07/22	DW	GA



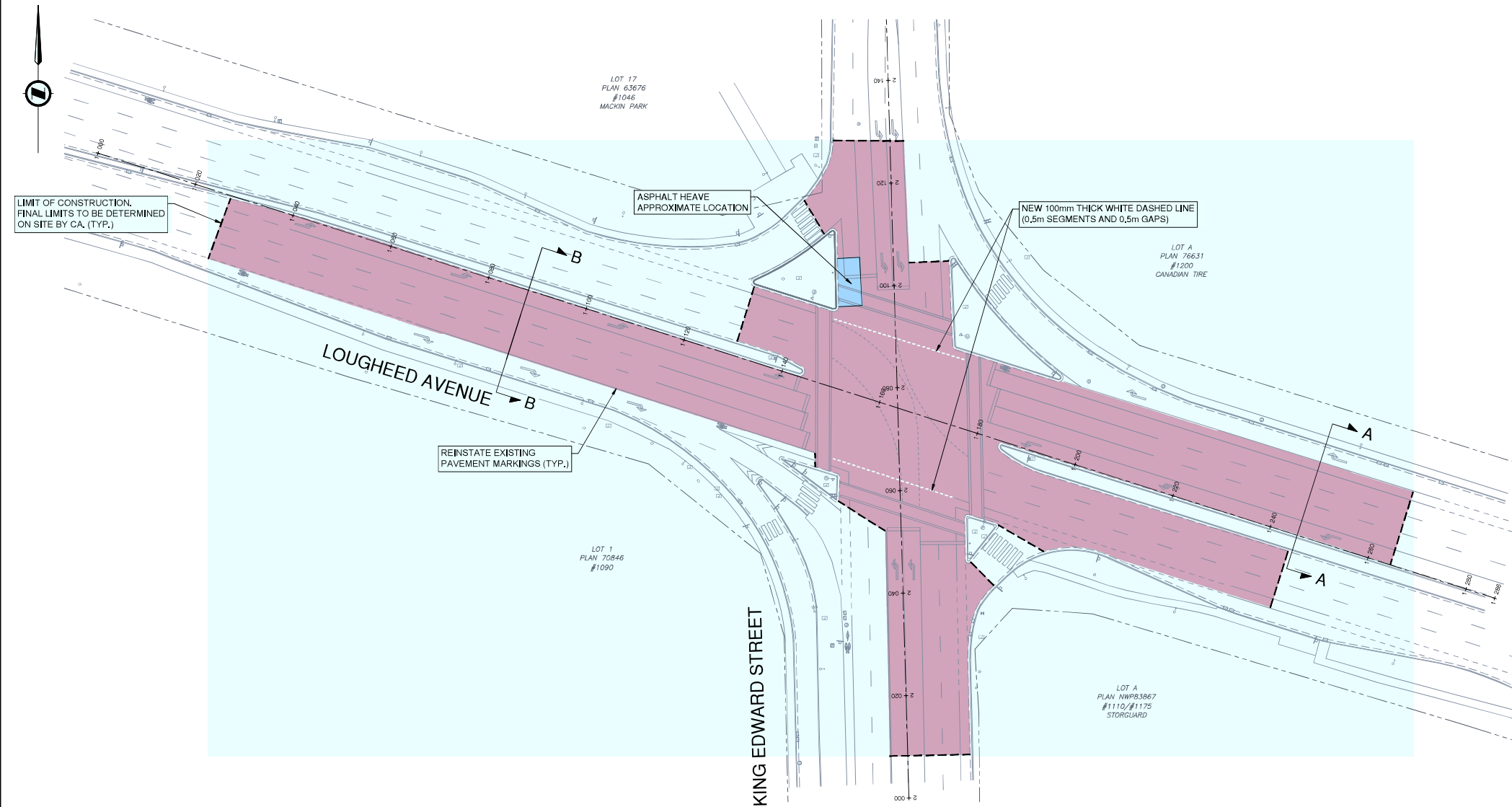
GENERAL NOTES

LOUGHEED HWY AND UNITED BLVD PAVEMENT REHAB



#201, 3999 Hemming Drive, Burnaby, B.C. V5C 6P9
T: (604) 639-2698 F: (604) 639-2099

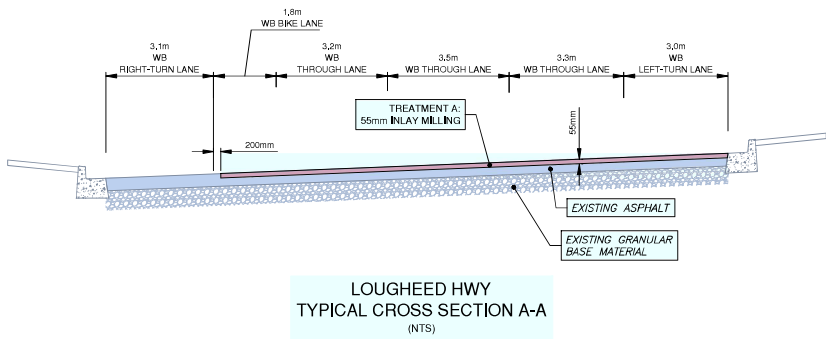
SCALE	AS SHOWN	CREATION DATE	JAN-2025	DWG. NO.
DRAWN BY	DW	DESIGN BY	CJB	01 OF
CHECKED BY	CJB	APPROVED BY	CJB	03
PLOT DATE	July 22, 2025			REV. B



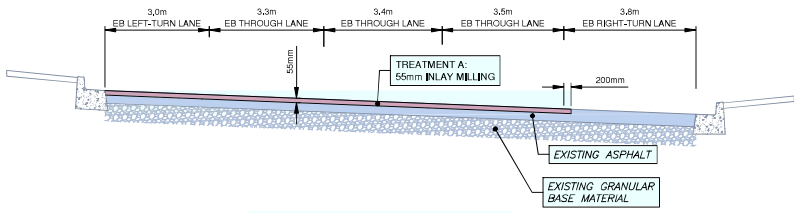
PLAN
SCALE: 1:500

- TREATMENT A: 55mm INLAY MILL AND PAVING**
1. DETERMINE FINAL LIMITS OF ROAD TREATMENT WITH CONTRACT ADMINISTRATOR.
 2. SURFACE MILL THE EXISTING ASPHALT ROAD TO A DEPTH OF 55mm.
 3. CLEAN AND TACK-COAT ALL ASPHALT SURFACES INCLUDING JOINTS.
 4. INLAY (WITH PAVER) MILLED AREA WITH NEW HOT MIX ASPHALT TO 55mm THICKNESS (USE MOTI CLASS 1, 19mm MEDIUM MIX WITH 70-22P GROUP A ASPHALT BINDER, COMPACTED TO NO LESS THAN 97% OF 75 BLOW MARSHALL DENSITY).
 5. SEAL ALL CONSTRUCTION JOINTS FOLLOWING THE COMPLETION OF PAVING, AND PRIOR TO INSTALLATION OF PAINT LINES.
- TREATMENT B: 150mm FULL DEPTH MILL AND PAVING**
1. DETERMINE FINAL LIMITS OF ROAD TREATMENT WITH CONTRACT ADMINISTRATOR.
 2. FULL DEPTH MILL THE EXISTING ASPHALT SURFACES & GRAVEL TO A DEPTH OF MIN 150mm.
 3. SUPPLEMENT WITH 25mm MINUS GRANULAR BASE MATERIAL, RESHAPE TO PROPOSED GRADES AND COMPACT TO NO LESS THAN 95% MODIFIED PROCTOR DENSITY.
 4. PLACE (WITH PAVER) BASE LIFT OF NEW HOT MIX ASPHALT TO 75mm THICKNESS (USE MMCD STANDARD LOWER COURSE #1 MIXTURE, COMPACTED TO NO LESS THAN 97% OF 75 BLOW MARSHALL DENSITY).
 5. CLEAN AND TACK-COAT ALL ASPHALT SURFACES INCLUDING JOINTS.
 6. PLACE (WITH PAVER) TOP LIFT OF NEW HOT MIX ASPHALT TO 55mm THICKNESS (USE MOTI CLASS 1, 19mm MEDIUM MIX WITH 70-22P GROUP A ASPHALT BINDER, COMPACTED TO NO LESS THAN 97% OF 75 BLOW MARSHALL DENSITY).
 7. SEAL ALL CONSTRUCTION JOINTS FOLLOWING THE COMPLETION OF PAVING, AND PRIOR TO INSTALLATION OF PAINT LINES.

- NOTES:**
1. SNOWPLOWABLE RECESSED PAVEMENT MARKERS (BY OTHERS) TO BE INSTALLED AS FOLLOWS:
 - 1.1. SHALL BE PLACED AT A SPACING OF 18m (MAX) RESULTING IN A RPM EVERY SECOND DASHED LINE
 - 1.2. SHALL BE PLACED 300mm IN ADVANCE OF DASHED LINES
 - 1.3. SHALL INCLUDE DECELERATION DASHED LINES
 - 1.4. SHALL BE PLACED AT 13m INTERVALS AT SOLID INTERSECTIONS & DECELERATION APPROACH LINES (OFFSET 50mm TO RIGHT OF LANE LINE).
 2. ALL MANHOLES & WATER VALVE FRAME & LID CASTINGS ARE TO BE REMOVED AND REPLACED.
 3. CLEAN OR TOUCH-UP ALL PAINTED LINES COVERED IN TACK COAT WITHIN 10m OF NEW ASPHALT. (INCIDENTAL, TYPICAL)



LOUGHEED HWY
TYPICAL CROSS SECTION A-A
(NTS)



LOUGHEED HWY
TYPICAL CROSS SECTION B-B
(NTS)



ISSUED FOR TENDER DESIGN NO. 34157

REV. NO.	REVISION DESCRIPTION	DATE	DRAWN	APPRD.
A	DETAILED DESIGN	2025/03/07	DW/GA	CJB
B	ISSUED FOR TENDER	2025/07/22	DW	CJB



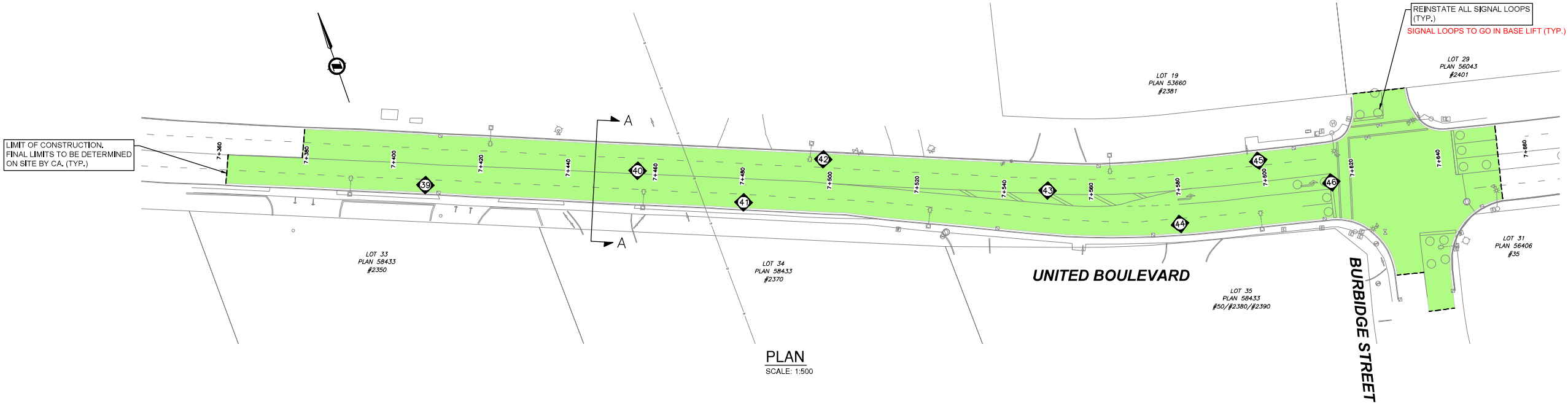
LOUGHEED HWY AND KING EDWARD ST INTERSECTION
PAVEMENT REHABILITATION



#201, 3999 Hemming Drive, Burnaby, B.C. V5C 6P9
T: (604) 293-2008 F: (604) 293-2009

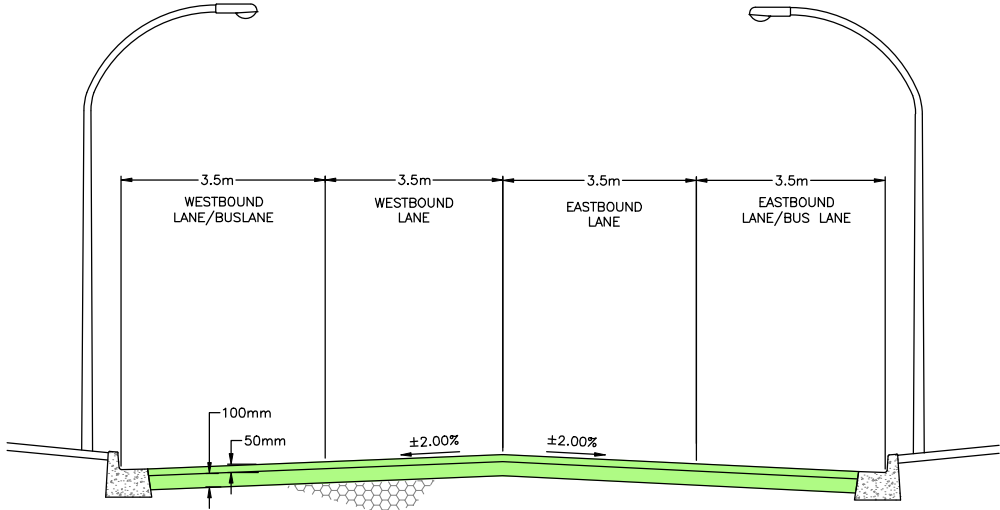
SCALE	AS SHOWN	CREATION DATE	JAN-2025	DWG. NO.
DRAWN BY	DW/GA	DESIGN BY	CJB	02 OF 03
CHECKED BY	CJB	APPROVED BY	CJB	REV. B
PLOT DATE	July 22, 2025			

NOTES:
1. ALL MANHOLES & WATER VALVE FRAME & LID CASTINGS ARE TO BE REMOVED AND REPLACED.



UNITED BOULEVARD CORE INFO (APR 2015):

CORE NO.	CORE REPORT REF NO.	APPROX STA.	LOCATION	TOTAL THICKNESS	TOP THICKNESS	COMMENTS
39	1	7+408	1.8m FROM SOUTH SIDE EASTBOUND/SLOW LANE	100	70	
40	8	7+454	7.0m FROM NORTH SIDE EASTBOUND/FAST LANE	115	45	RUTTING
41	2	7+479	1.5m FROM SOUTH SIDE EASTBOUND/SLOW LANE	125	50	
42	5	7+497	1.8m FROM NORTH SIDE WESTBOUND/SLOW LANE	115	45	
43	7	7+549	6.0m FROM NORTH SIDE EASTBOUND/FAST LANE	115	45	
44	3	7+578	2.3m FROM SOUTH SIDE EASTBOUND/SLOW LANE	143	60	
45	4	7+599	1.8m FROM NORTH SIDE WESTBOUND/SLOW LANE	110	40	NO BOND
46	6	7+613	8.3m FROM SOUTH SIDE EASTBOUND/TURN LANE	115	45	



- TREATMENT C: 150mm FULL DEPTH MILL AND PAVING**
- DETERMINE FINAL LIMITS OF ROAD TREATMENT WITH CONTRACT ADMINISTRATOR.
 - FULL DEPTH MILL THE EXISTING ASPHALT SURFACES & GRAVEL TO A DEPTH OF MIN 150mm.
 - SUPPLEMENT WITH 25mm MINUS GRANULAR BASE MATERIAL, RESHAPE TO PROPOSED GRADES AND COMPACT TO NO LESS THAN 95% MODIFIED PROCTOR DENSITY
 - PROOF ROLL AND OVEREXCAVATE WHERE REQUIRED AS DIRECTED BY THE CONTRACT ADMINISTRATOR.
 - PLACE (WITH PAVER) BASE LIFT OF NEW HOT MIX ASPHALT TO 100mm THICKNESS (USE MMCD STANDARD LOWER COURSE #1 MIXTURE, COMPACTED TO NO LESS THAN 97% OF 75 BLOW MARSHALL DENSITY).
 - CLEAN AND TACK-COAT ALL ASPHALT SURFACES INCLUDING JOINTS.
 - PLACE (WITH PAVER) TOP LIFT OF NEW HOT MIX ASPHALT TO 50mm THICKNESS (USE MOTI CLASS 1, 19mm MEDIUM MIX WITH 70-22P GROUP A ASPHALT BINDER, COMPACTED TO NO LESS THAN 97% OF 75 BLOW MARSHALL DENSITY).
 - SEAL ALL CONSTRUCTION JOINTS FOLLOWING THE COMPLETION OF PAVING, AND PRIOR TO INSTALLATION OF PAINT LINES.
 - CLEAN OR TOUCH-UP ALL PAINTED LINES COVERED IN TACK COAT WITHIN 10m OF NEW ASPHALT. (INCIDENTAL, TYPICAL)



ISSUED FOR TENDER DESIGN NO.

34157

REV NO.	REVISION DESCRIPTION	DATE	DRAWN	APPRD.
A	DETAILED DESIGN	2015/05/22	NMW	KPT
B	100% DETAILED DESIGN	2015/08/05	NMW	KPT
C	100% DETAILED DESIGN - RESUBMISSION	2025/03/07	GA	CJB
D	ISSUED FOR TENDER	2025/07/22	DW	GA



ROAD
WORKS

UNITED BOULEVARD
PAVEMENT REHABILITATION



#201, 3959 Henning Drive, Burnaby, B.C., V5C 6P9
T: (604)629-2048 F: (604)629-2038

SCALE	AS SHOWN	CREATION DATE	APR-2015	DWG. NO.
DRAWN BY	NMW	DESIGN BY	CJB/NMW	03
CHECKED BY	CJB	APPROVED BY	GA	OF
PLOT DATE	July 22, 2025			03
				REV. D