

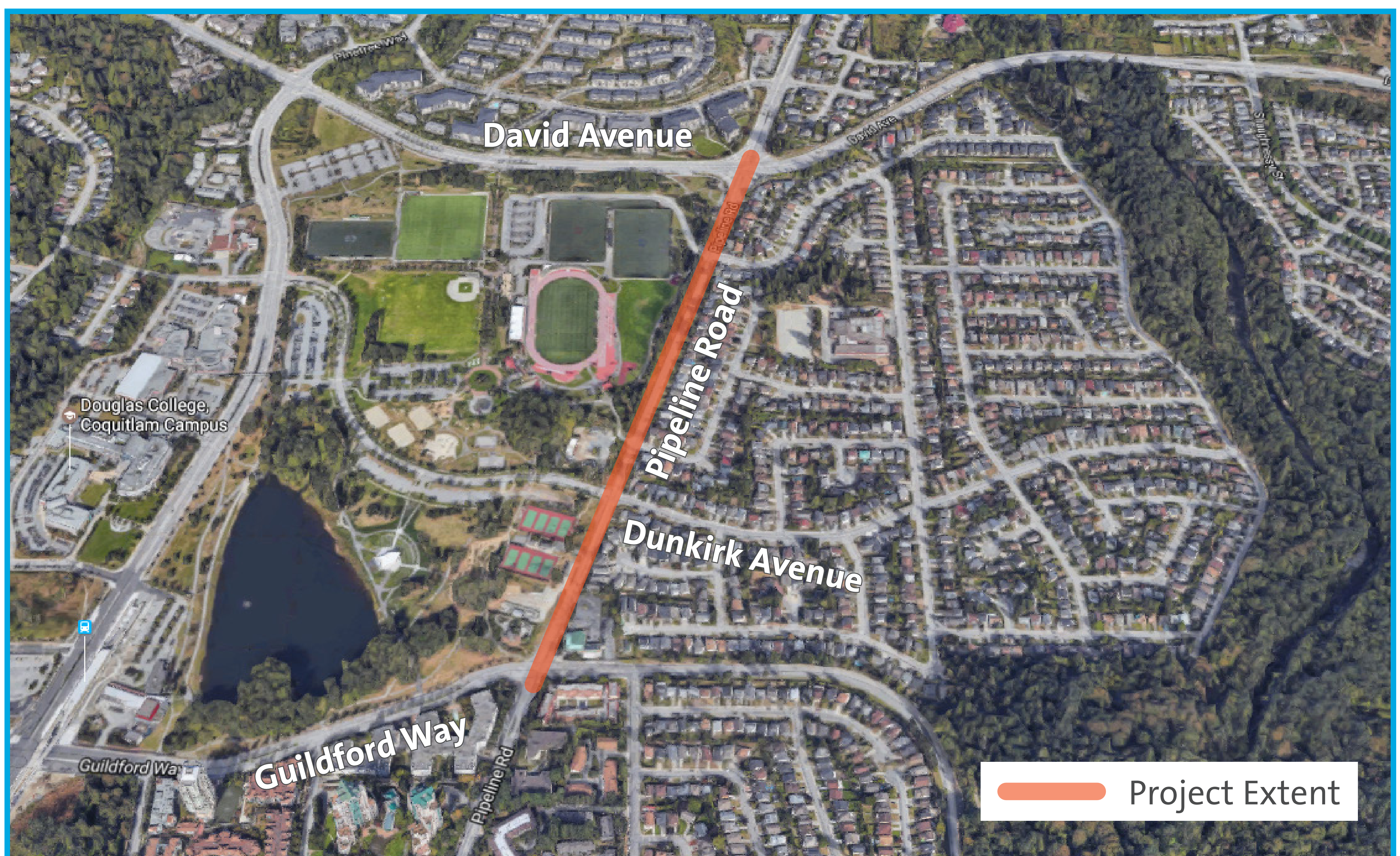
PIPELINE ROAD DESIGN PROJECT

COMMUNITY INFORMATION SESSION

COMPLETING THE STREET

Coquitlam is initiating the design to complete Pipeline Road between Guildford Way and David Avenue. This arterial road serves the Town Centre and Northeast Coquitlam.

This community information session is an opportunity to comment on the design considerations for completing the street.



FEEDBACK

Your feedback is important to us

Please take a moment to provide us with your comments.

STAY CONNECTED WITH US!

-  coquitlam.ca/pipelineroad
-  pipelineroad@coquitlam.ca
-  604-927-3500



PIPELINE ROAD DESIGN PROJECT

COMMUNITY INFORMATION SESSION

TIMELINE

Design Process

Open House 1 – Design Considerations

May 24 & 27, 2017

**WE ARE
HERE**

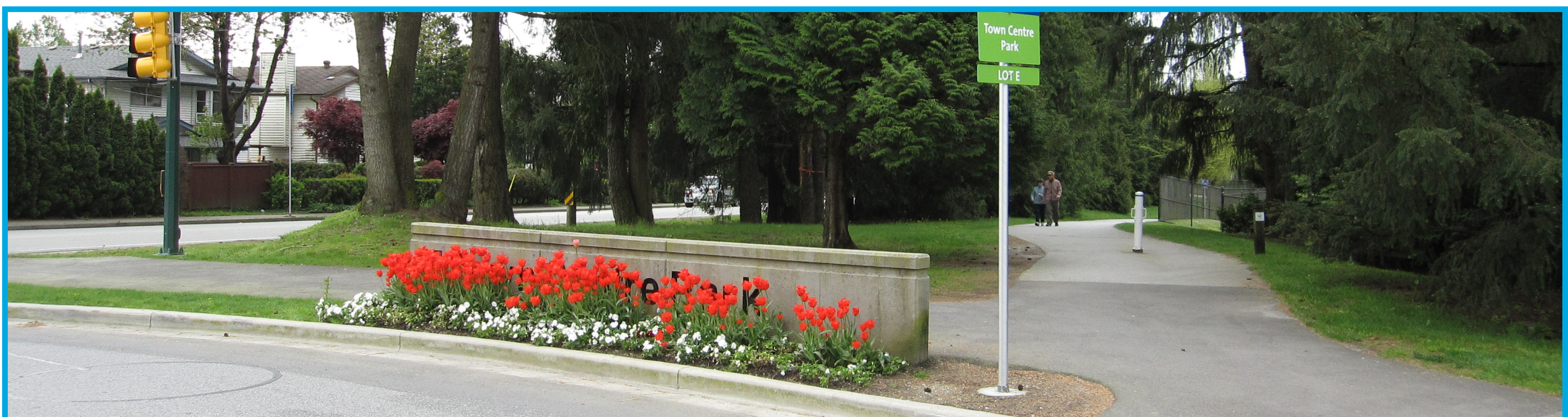
Open House 2 – Street Options and Evaluation Criteria

Fall 2017

Open House 3 – Preferred Design

Winter 2018

**Detailed Design to follow once a preferred option is selected.
Phasing of construction will be determined once the design
process is complete.**



STAY CONNECTED WITH US!

 coquitlam.ca/pipelineroad
 pipelineroad@coquitlam.ca
 604-927-3500

    [CityofCoquitlam](https://www.cityofcoquitlam.ca)

Coquitlam

PIPELINE ROAD DESIGN PROJECT

COMMUNITY INFORMATION SESSION

GUIDING PRINCIPLES

Project Goals and Considerations:

- Complete the street to better serve all users
- Support existing development and future growth
- Enhance mobility for area residents
- Support the Town Centre Park Master Plan
- Design a cost effective street
- Support the arterial street role as a primary mobility route
- Balance environmental impacts, available space and community needs
- Provide on-street parking during off-peak hours where feasible

Benefits:

- Improved operations and safety for all users
- Improved aesthetics and lighting
- Enhanced pedestrian facilities
- Enhanced gateway to Town Centre Park



STAY CONNECTED WITH US!

-  coquitlam.ca/pipelineroad
-  pipelineroad@coquitlam.ca
-  604-927-3500

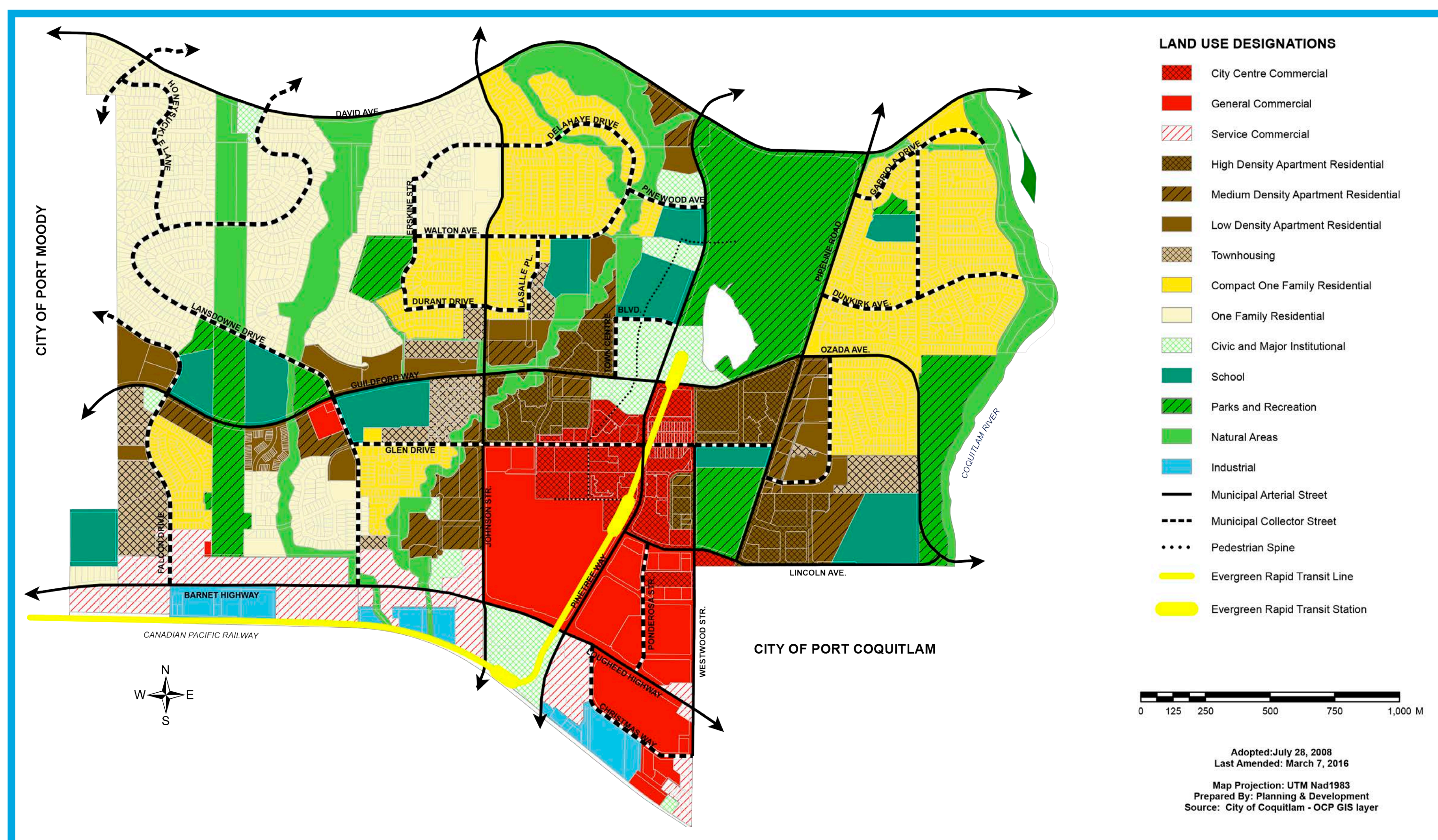


PIPELINE ROAD DESIGN PROJECT

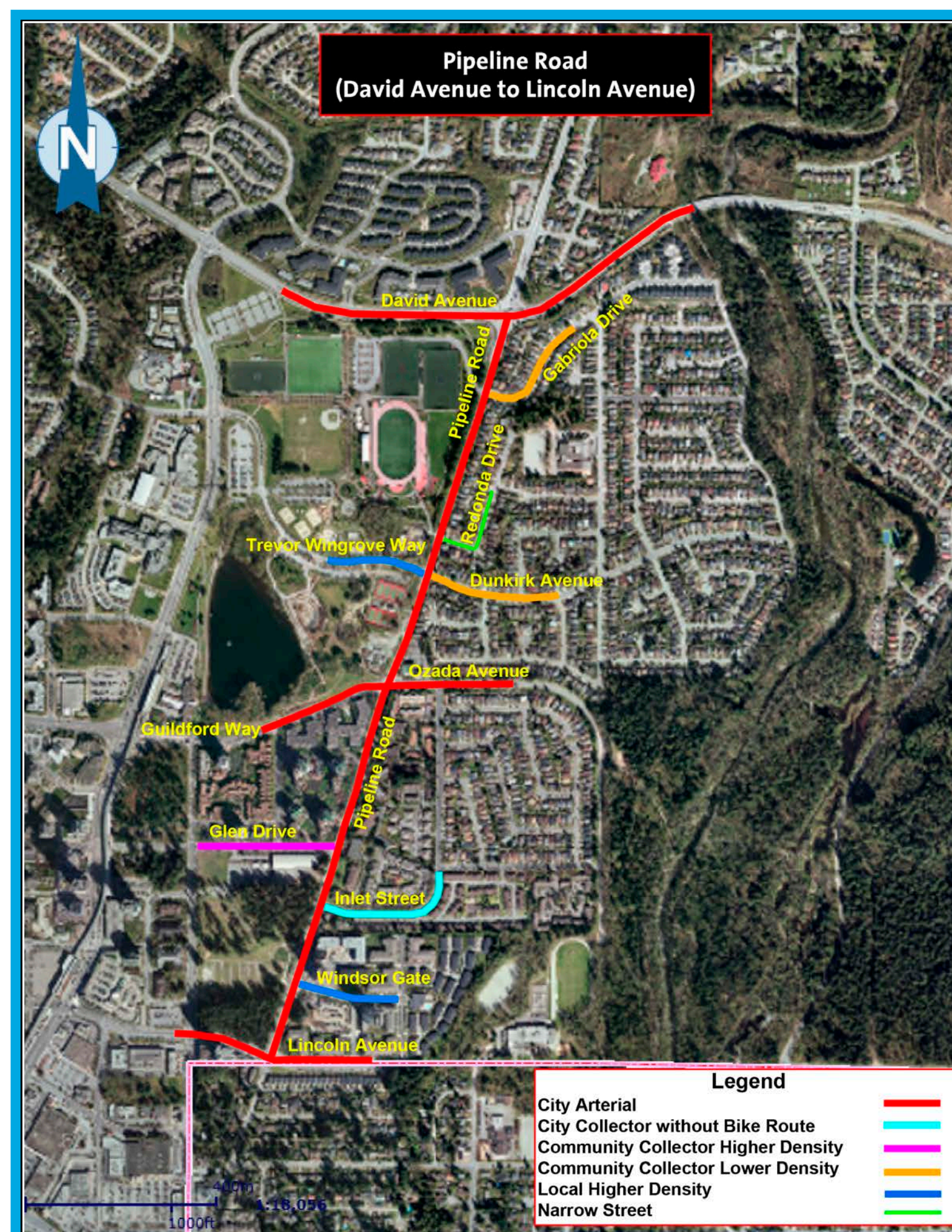
COMMUNITY INFORMATION SESSION

PLANNING CONSIDERATIONS FOR THE AREA

Land Use Plan for City Centre



Road Network Plan for City Centre



STAY CONNECTED WITH US!

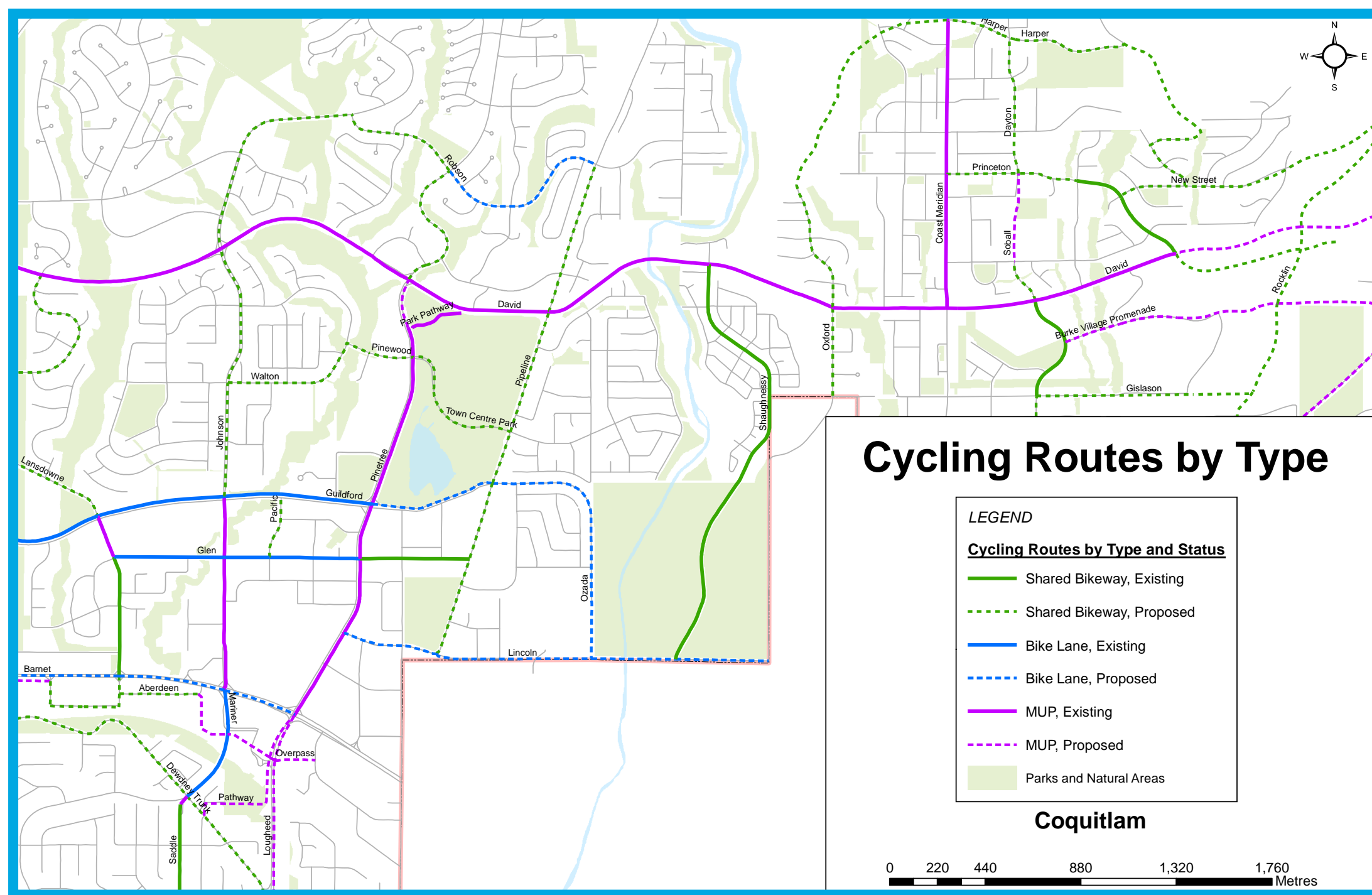
- coquitlam.ca/pipelineroad
- pipelineroad@coquitlam.ca
- 604-927-3500



PIPELINE ROAD DESIGN PROJECT

COMMUNITY INFORMATION SESSION

PLANNING CONSIDERATIONS FOR THE AREA

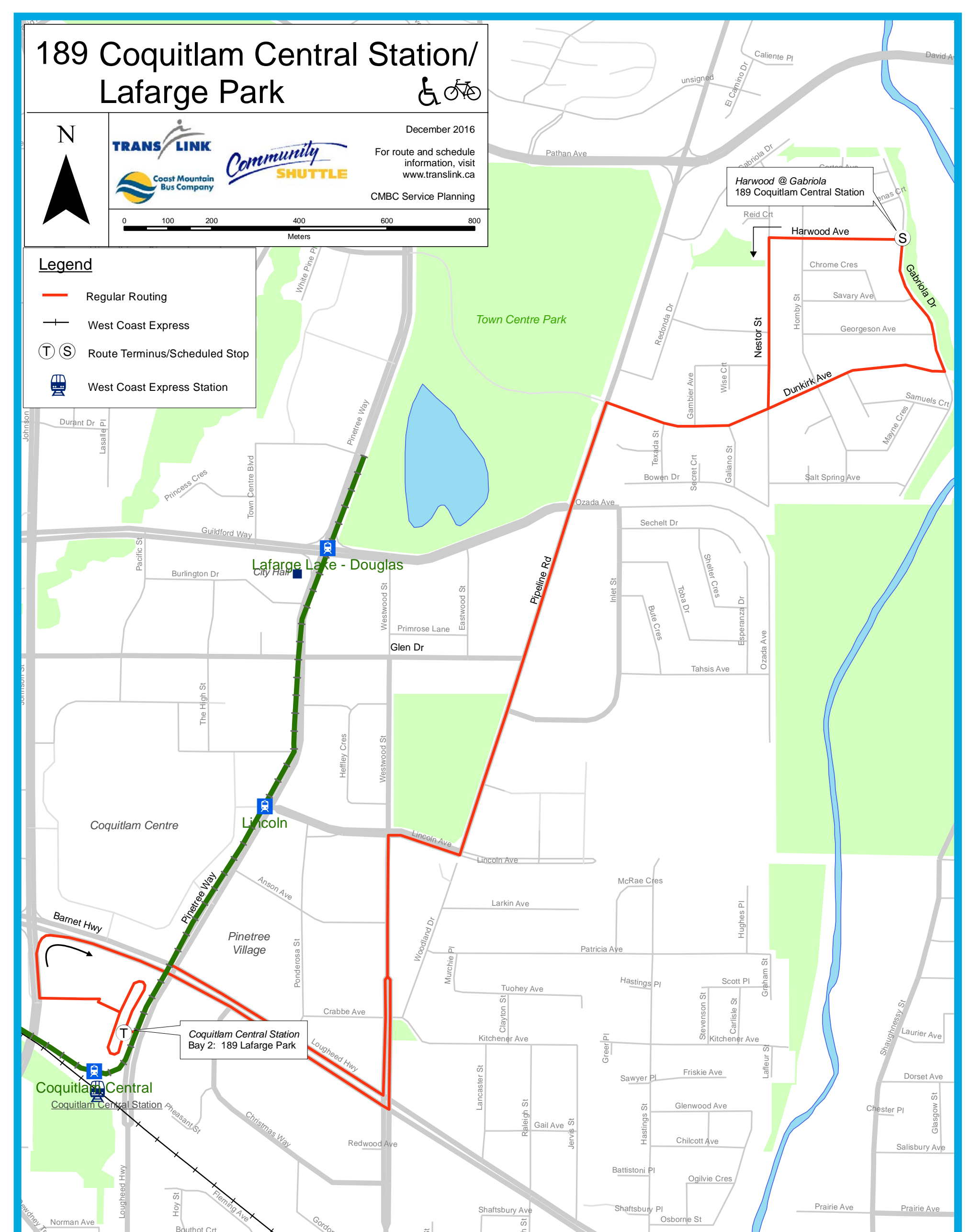


Cycling Connections

- Pipeline Road is a designated cycling route.
- It connects to David Avenue multi-use path, Trevor Wingrove Way and Guildford Way cycling routes.

Transit Service – TransLink’s 2017 transit routes & new #189 route

- #189 is the only route currently traveling along Pipeline Road within the project.
- 30 min frequency except during evenings.
- #186, #188, #191 routes serve David Avenue at Pipeline Road.



STAY CONNECTED WITH US!

- coquitlam.ca/pipelineroad
- pipelineroad@coquitlam.ca
- 604-927-3500

PIPELINE ROAD DESIGN PROJECT

COMMUNITY INFORMATION SESSION

EXISTING CONDITIONS

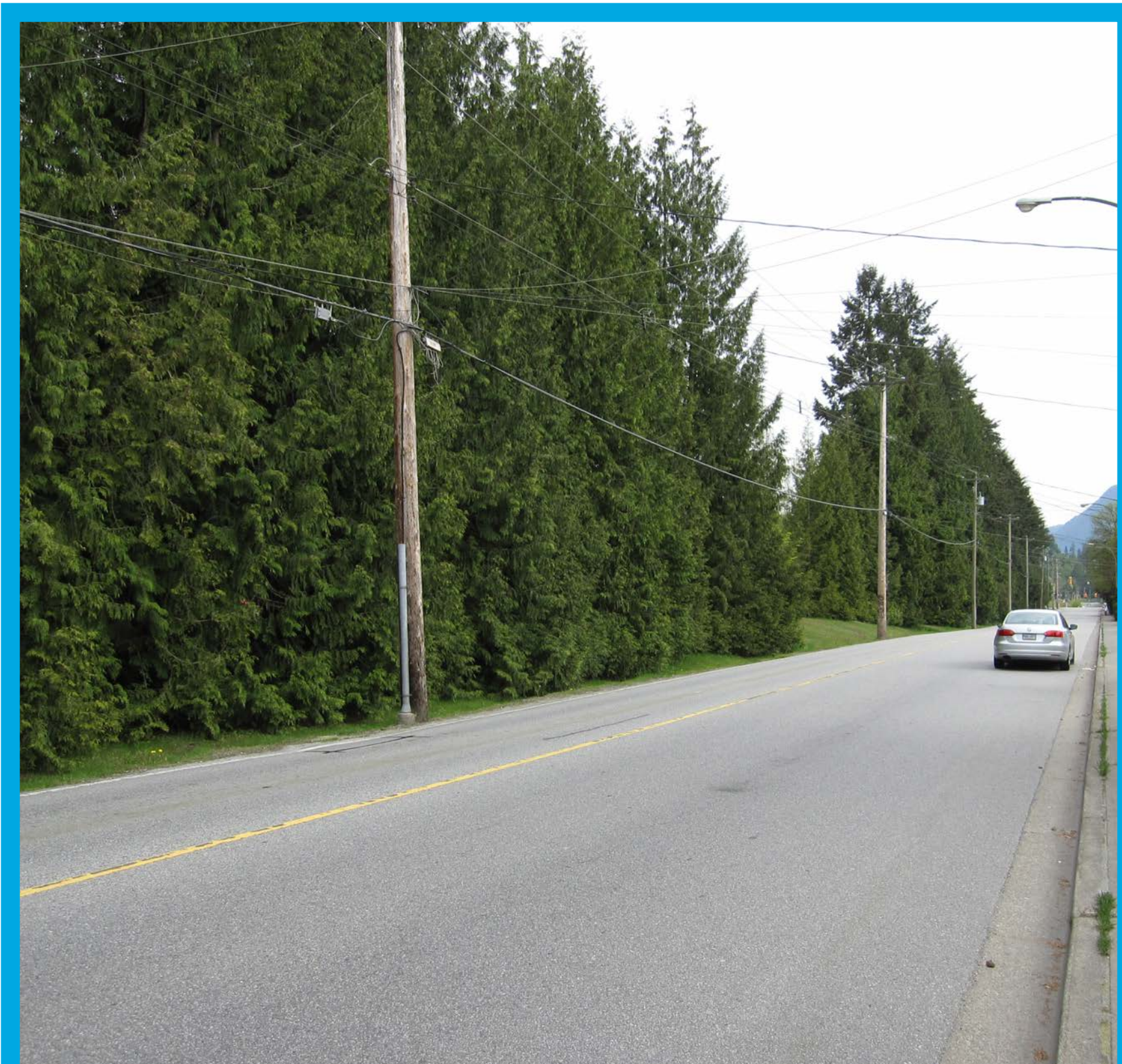
The majority of the street improvements are expected to be on the west side of Pipeline Road. Existing features include:



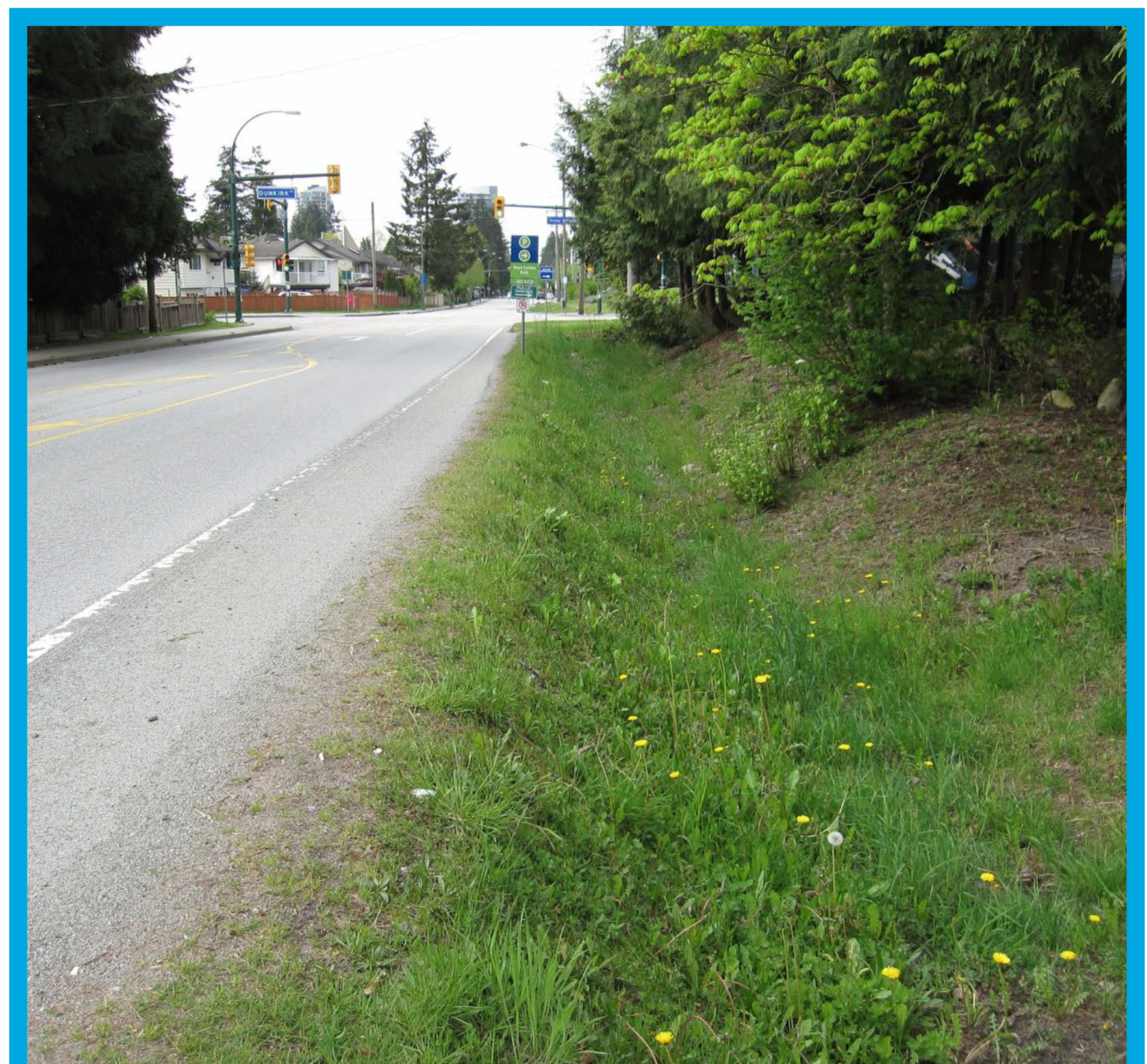
GAPS IN SIDEWALK



TREES WITHIN EXISTING ROAD RIGHT-OF-WAY



POWER POLES AND OVERHEAD UTILITIES



ROADSIDE WATERCOURSE

STAY CONNECTED WITH US!

 coquitlam.ca/pipelineroad
 pipelineroad@coquitlam.ca
 604-927-3500

    [CityofCoquitlam](https://www.cityofcoquitlam.ca)



PIPELINE ROAD DESIGN PROJECT

COMMUNITY INFORMATION SESSION

BIGGER PICTURE CONSIDERATIONS

GROWTH: As a result of land development and growth in Northeast Coquitlam, arterial traffic volumes will increase in built-out conditions as shown below.

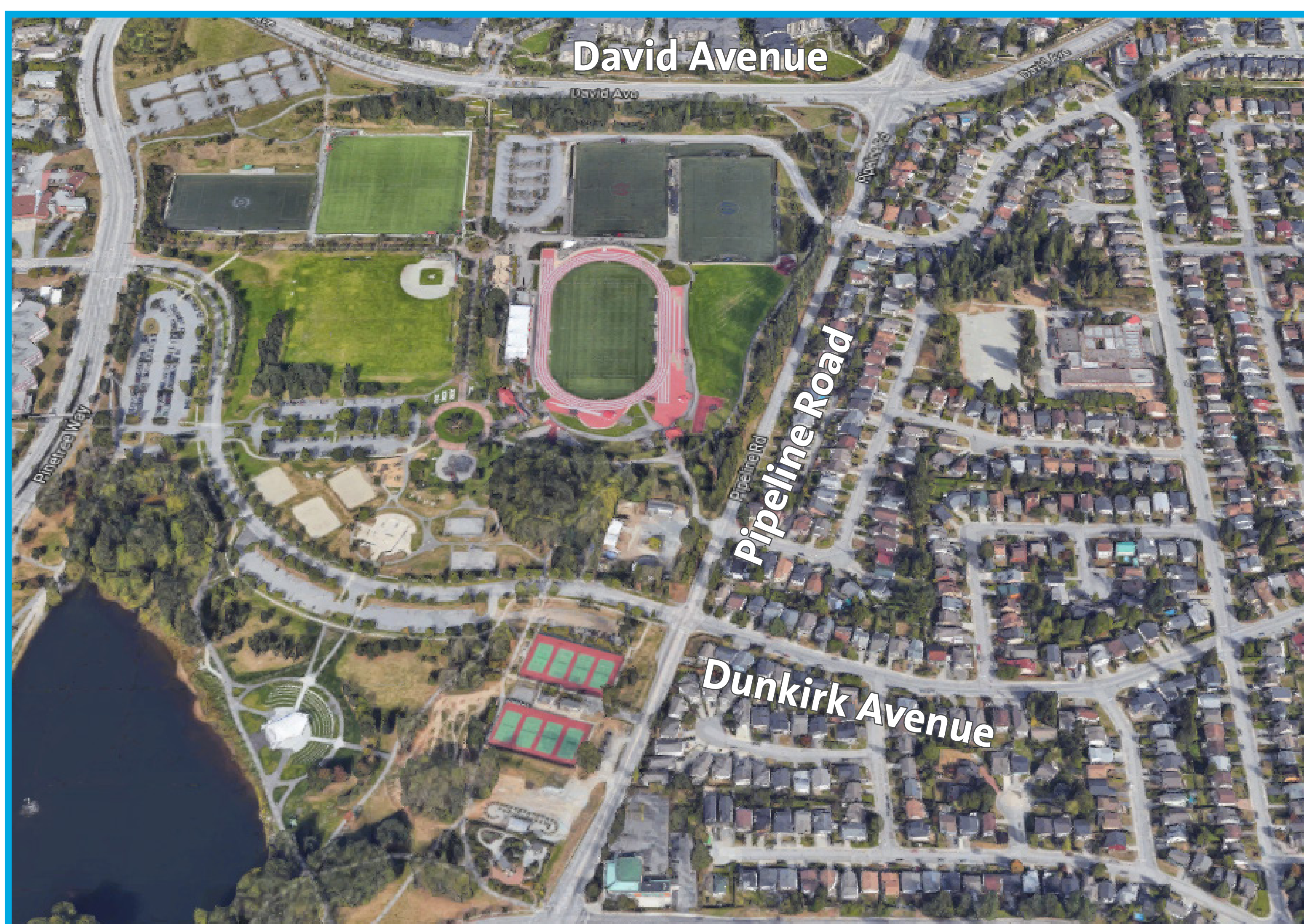
Estimated Two Way Traffic Volumes along Pipeline Road

Now 13,000 – 15,000

BUILD-OUT* 20,000 +

*Estimate, dependant on actual land development build out. Source: Traffic Counts and estimates by the City of Coquitlam

FUNDING: To address this growth, the City collects Development Cost Charges from each new development to fund required infrastructure improvements. The Development Cost Charges will be used to pay for the upgrade of Pipeline Road.



STAY CONNECTED WITH US!

-  coquitlam.ca/pipelineroad
-  pipelineroad@coquitlam.ca
-  604-927-3500



Coquitlam

PIPELINE ROAD DESIGN PROJECT

COMMUNITY INFORMATION SESSION

KEY ELEMENTS

Typical features of an upgraded arterial street are:

- Continuous Sidewalk along both sides of the street
- Improved lighting conditions
- Appropriate capacity to address existing and future transportation and mobility needs
- Appropriate storm water management to protect stream health
- Improved intersections and street crossings
- Cycling connectivity within road right-of-way or through the park
- Provision for bus stops
- Landscape treatments



STAY CONNECTED WITH US!

-  coquitlam.ca/pipelineroad
-  pipelineroad@coquitlam.ca
-  604-927-3500



Coquitlam

PIPELINE ROAD DESIGN PROJECT

COMMUNITY INFORMATION SESSION

FEEDBACK – CONSIDERATIONS & OPPORTUNITIES

The design will take into account existing conditions and opportunities identified through this process:

- What existing street conditions should we be aware of during the design process? Some of these are already shown in the adjacent map.
- What are the opportunities for future improvements that you would like to see in the design?

Please identify additional considerations and opportunities along Pipeline Road. Your feedback will be considered in developing design options for the street.

THANK YOU FOR YOUR PARTICIPATION!

If you are unable to provide comments during this Open House, an online questionnaire is available for you until June 7 at coquitlam.ca/pipelineroad.

STAY INFORMED

Visit coquitlam.ca/pipelineroad and sign up to receive project updates by email.

STAY CONNECTED WITH US!

-  coquitlam.ca/pipelineroad
-  pipelineroad@coquitlam.ca
-  604-927-3500



Coquitlam