



## Addendum No. 1

**City of Coquitlam**

**Tender 94722**

**Fawcett Sanitary and Brunette Storm Main Replacements**

(Consists of 7 Pages)

Issue Date: Dec 3, 2025

Tenderers shall note the following changes:

### Revisions

#### 1. Refer to: FORM OF TENDER

**REMOVE: Appendix 1 SCHEDULE OF QUANTITIES AND PRICES**

**REPLACE with: Revised - Appendix 1 - Revision No. 1 - SCHEDULE OF QUANTITIES AND PRICES**

#### 2. Refer to: SUPPLEMENTARY SPECIFICATIONS, Section 33 34 01s Clause 1.8

**DELETE 1.8.2 and REPLACE with the following:**

"Payment for sanitary sewer forcemain includes saw cutting pavement, trench excavation, offsite disposal of native excavated material according to contamination level, supply and installation of all specified piping, fittings and related materials, **fused butt joints (HDPE), flange adapter at bends (HDPE)**, mechanical restraints, concrete thrust blocks, bedding, pressure test and leakage testing, cleaning/flushing, landscape restoration, weekly temporary asphalt patch, asphalt curb, and all other work and materials necessary to complete installation as shown on Contract Drawings and specified under this Section unless otherwise specified in the Schedule of prices and Quantities; and

Measurement for sanitary force main will be made horizontally from manhole centreline to manhole centreline over surface after work has been completed."

#### 3. Refer to: APPENDIX C – CONTRACT DRAWINGS

**REMOVE: SHEET 1 of 4, SHEET 4 OF 4**

**REPLACE with: SHEET 1 of 4 ADDENDUM 1, SHEET 4 of 4 ADDENDUM 1**

### Contractor Questions/Clarifications

Q1) Can we use light equipment to facilitate trenching aside from hydrovac truck above the existing Trans Mountain Pipeline corridor such as backhoe, skid steer, tandem and within the 7.5m both sides of the existing Trans Mountain Pipeline?

A1) **Trans Mountain will dictate excavation requirements within 7.5m of their pipeline. Contractors are advised that the typical requirements exclude the use of mechanized digging equipment. Contractor must follow the "No Mechanical Dig Zone" requirement. Hydro excavation and hand digging are the only methods typically permitted by Trans Mountain and WorkSafe BC within 7.5m of the Trans Mountain pipeline. Contractors may call Trans Mountain to make their own enquiries, but the City does not have the authority to override Trans Mountain or WorkSafe BC requirements.**

Q2) Can you extend the Tender Closing date?

**A2) Closing Date will remain unchanged at this time.**

---

***End of Addendum No. 1***

Tenderers shall take into account the content of this Addendum in the preparation and submission of the Tender which will form part of the contract and should be acknowledged on the Tender form where indicated.

Upon submitting a Tender, Tenderers will be deemed to have received all addenda and considered the information for inclusion in the Tender submitted.

*Issued by:*

M. Pain  
Purchasing Manager  
Email: [bid@coquitlam.ca](mailto:bid@coquitlam.ca)

**Revised - APPENDIX 1 - Revision No.1**

**FORM OF TENDER**

**Contract 94722**

**Fawcett Sanitary and Brunette Storm Main Replacements**

**SCHEDULE OF QUANTITIES AND PRICES**

(see paragraph 5.3.1 of the Instruction to Tenderers)

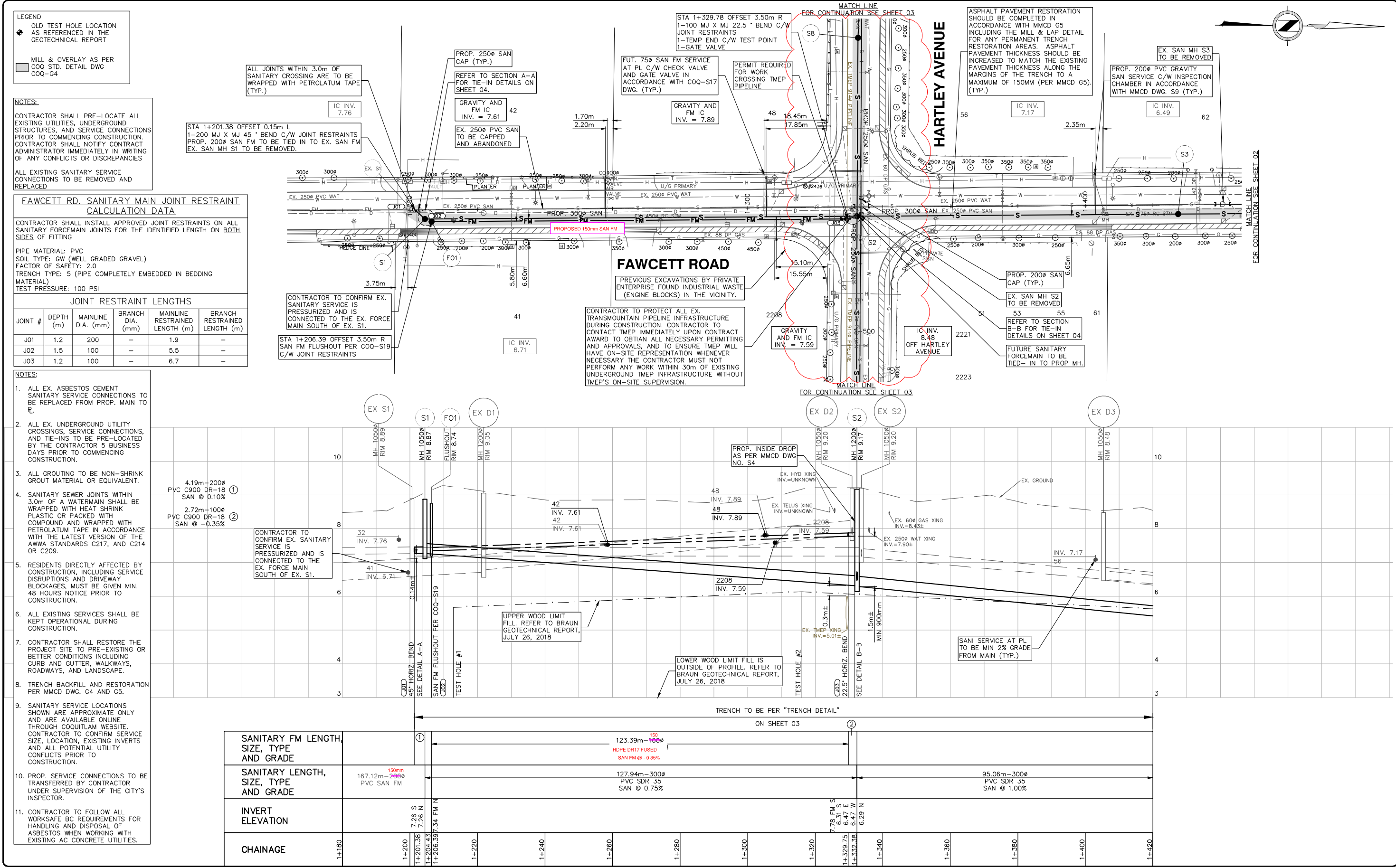
**(All Tender and Contract Prices shall NOT include GST. GST will apply upon payment)**

**(Should there be any discrepancy in the information provided, the City's original file copy shall prevail)**

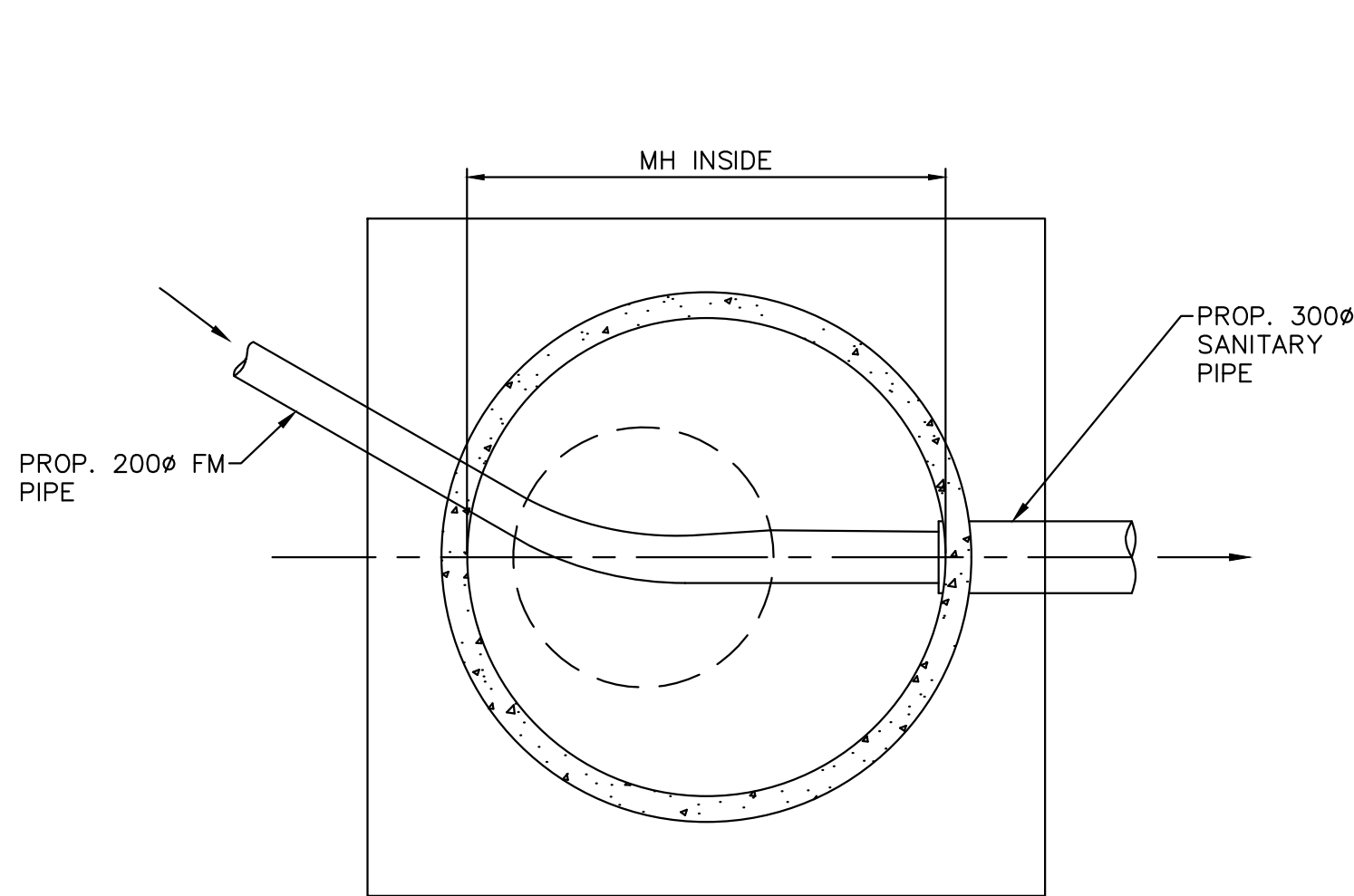
ITEM NO.	MMCD REF. or (Supp. Specs)	DESCRIPTION	UNIT OF MEASURE	TOTAL QUANTITY	UNIT PRICE	AMOUNT
<b>HARTLEY-FAWCETT SANITARY SEWER</b>						
<b>1.00</b>	<b>01 55 005</b>	<b>TRAFFIC CONTROL, VEHICLE ACCESS AND PARKING</b>				
1.01	(1.5.1)	Traffic Control and Management	Incidental to Contract			
<b>2.00</b>	<b>01 57 015</b>	<b>ENVIRONMENTAL PROTECTION</b>				
2.01	(1.6.1)	Environmental Protection	Incidental to Contract			
<b>3.00</b>	<b>01 58 015</b>	<b>PROJECT IDENTIFICATION</b>				
3.01	(1.3.1)	Construction Zone Information Signs	Each	4		
3.02	(1.3.2)	Changeable Message Sign (x2 United Blvd Only)	Month	1		
<b>4.00</b>	<b>03 30 205</b>	<b>CONCRETE WALKS, CURBS AND GUTTERS</b>				
4.01	(1.4.3)	Remove & Replace MMCD C5 Concrete Curb and Gutter	l.m.	16		
4.02	(1.4.5)	Remove & Replace Concrete Sidewalk - 100mm Thick – Broom Finish	sq.m	8		
4.03	(1.4.5)	Remove & Replace Concrete Driveway Crossings Including Flares - 190mm Thick	sq.m	9		
<b>5.00</b>	<b>31 23 015</b>	<b>EXCAVATING, TRENCHING AND BACKFILLING</b>				
5.01	(1.10.3)	Overexcavation - Includes replacement with 19mm minus crushed granular material and removal of unsuitable material including wood fill as identified on the Contract Drawings and in the geotech report (Provisional)	C.M.	425		
5.02	(1.10.9)	Imported Trench Backfill - 75mm Minus Pit Run Gravel (in Accordance to Clause 2.9 Pit Run Gravel in Section 31 05 17 – Aggregates and Granular Materials)	Tonne	2900		
5.03	(1.10.9)	Imported Trench Backfill - Vesicular Basalt (Red Pumice) Warpped in Nilex 4551 or approved Equivelent	Tonne	1300		
5.04	(1.10.12) / (1.10.13)	Pre-locate existing Trans Mountain oil pipeline by hydro excavation. (Provisional)	Allowance			\$5,000.00
5.05	(1.10.13)	Hydro excavate for service installation as directed by City paid Arborist (Provisional)	Allowance			\$5,000.00
<b>6.00</b>	<b>32 01 16.75</b>	<b>COLD MILLING</b>				
6.01	(1.5.1)	Surface Mill - 50mm	sq.m	2,330		
<b>7.00</b>	<b>32 12 13.1</b>	<b>ASPHALT TACK COAT</b>				
7.01	1.5.1	Asphalt Tack Coat - Emulsified Asphalt	sq.m	2,330		
<b>8.00</b>	<b>32 12 165</b>	<b>HOT-MIX ASPHALT CONCRETE PAVING</b>				
8.01	(1.5.1)	Hot Mix Asphalt - 50mm Surface Layer - MMCD Upper Course #1	tonne	300		

ITEM NO.	MMCD REF. or (Supp. Specs)	DESCRIPTION	UNIT OF MEASURE	TOTAL QUANTITY	UNIT PRICE	AMOUNT
<b>9.00</b>	<b>32 17 235</b>	<b>PAINTED PAVEMENT MARKINGS</b>				
9.01	(1.5.3)	Supply & Installation Thermoplastic Pavement Markings Where Removed.	Lump Sum	1		
<b>10.00</b>	<b>33 30 015</b>	<b>SANITARY SEWERS</b>				
10.01	(1.6.2)	300mm Diameter PVC SDR 35 Pipe includes Import Fill and Disposal of Native Material (0.00m to 2.99m deep, per trench detail-1)	Linear Meter	200		
10.02	(1.6.2)	300mm Diameter PVC SDR 35 Pipe includes Import Fill and Disposal of Native Material (3.00m to 6.00m deep, per trench detail-1)	Linear Meter	260		
10.03	(1.6.2)	250mm Diameter PVC SDR 35 Pipe includes Import Fill and Disposal of Native Material (0.00m to 3.5m deep, per trench detail-1)	Linear Meter	160		
10.04	(1.6.3)	200mm dia. PVC DR28 - Sanitary Service Connection per MMCD S7 (New) - Includes Long Radius Bends	Linear Meter	150		
10.05	(1.6.3)	Supply and Install MMCD S9 Inspection Chamber Inside Brooks Box and Tie-Into Private Side Service	Each	13		
10.06	(1.6.3)	Sanitary Service Tie-in at Main with factory Wye	Each	10		
10.07	(1.6.3)	Cap and Abandon Existing Sanitary Main 200mm Diameter Main	Each	2		
10.08	(1.6.7)	Sanitary Service Tie-in to manhole	Each	3		
<b>11.00</b>	<b>33 34 015</b>	<b>SANITARY FORCE MAINS</b>				
11.01	(1.8.2)	150mm diam HDPE DR17 at 0 to 3m depth - Sewage Forcemain c/w Fused Joints	Lin.m	130		
11.02	(1.8.2)	150mm diam PVC C900 at 0 to 3m depth - Sewage Forcemain (Petrolatum Tape on crossing - incidental)	Lin.m	5		
11.03	1.8.3	Sanitary Forcemain Flushout as per COQ-S19 including manhole, riser and gate valve - complete	Lump Sum	1		
11.04	1.8.3	Bend (45° Horizontal) - 150mm PVC (includes joint restraints)	Each	2		
11.05	1.8.3	Bend (45° Vertical) - 150mm HDPE (Fused or Flanged)	Each	2		
11.06	1.8.3	Bend (22.5° Horizontal) - 150mm HDPE (Fused or Flanged)	Each	1		
11.07	1.8.5	Test points - complete (Provisional)	Lump Sum	1		
11.08	(1.8.10)	Forcemain Tie-in Proposed 150mm & Existing 150mm Forcemain	Each	1		
<b>12.00</b>	<b>33 44 015</b>	<b>MANHOLES AND CATCHBASINS</b>				
12.01	(1.5.1.1)	1050mm Manhole per Contract Drawings - complete	Each	7		
12.02	(1.5.1.1)	1050mm Overbuild Manhole per Contract Drawings - complete	Each	1		
12.03	(1.5.1.1)	1200mm Manhole per Contract Drawings - c/w Inside Drop - complete	Each	1		
12.04	1.5.1.2	1050mm Manhole Risers	Vertical Meter	20		
12.05	1.5.1.2	1200mm Manhole Risers	Vertical Meter	3		
12.06	(1.5.4)	Removal of existing sanitary manholes per Contract Drawings	Each	8		
<b>13.00</b>	<b>34 41 13</b>	<b>TRAFFIC SIGNALS</b>				

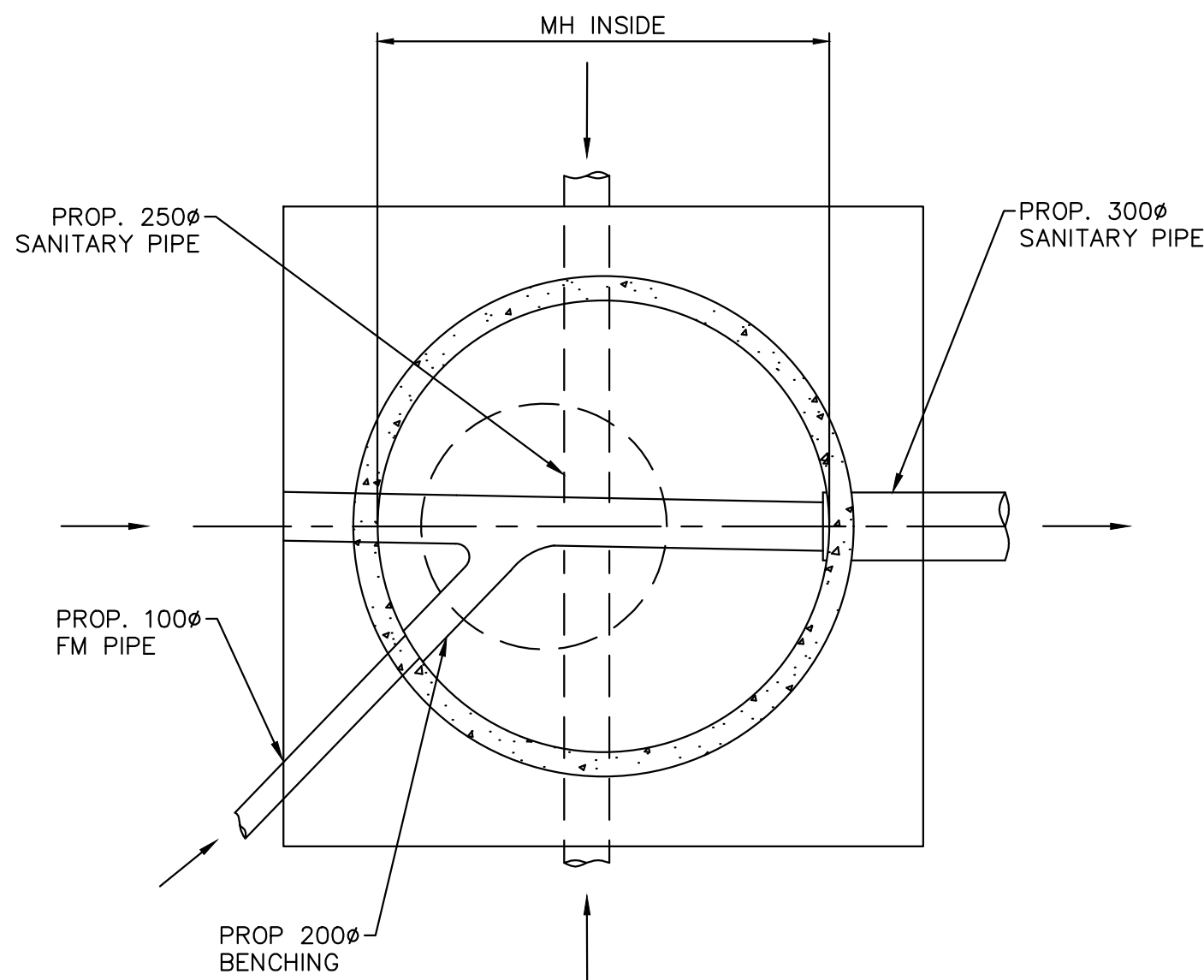
ITEM NO.	MMCD REF. or (Supp. Specs)	DESCRIPTION	UNIT OF MEASURE	TOTAL QUANTITY	UNIT PRICE	AMOUNT
13.01	1.9.2	Traffic Loops - Round - Remove and Re-install per Coq SS-E8.2 & Coq SS-E8.4 (Provisional)	Each	2		
<b>BRUNETTE AVE DRAINAGE MAIN REPLACEMENT</b>						
<b>14.00</b>	<b>01 55 00S</b>	<b>TRAFFIC CONTROL, VEHICLE ACCESS AND PARKING</b>				
14.01	(1.5.1)	Traffic Control and Management		Incidental to Contract		
<b>15.00</b>	<b>01 57 01S</b>	<b>ENVIRONMENTAL PROTECTION</b>				
15.01	(1.6.1)	ESC supply & installation, maintenance and removal		Incidental to Contract		
<b>16.00</b>	<b>01 58 01S</b>	<b>PROJECT IDENTIFICATION</b>				
16.01	(1.3.1)	1.2m x 1.2m Static Construction Zone Information Sign	each	2		
16.02	(1.3.2)	Changeable Message Sign (CMS) Board (x2 Boards)	Month	2		
<b>17.00</b>	<b>03 30 20S</b>	<b>CONCRETE WALKS, CURBS AND GUTTERS</b>				
17.01	(1.4.3)	Remove & Replace MMCD C5 Concrete Curb and Gutter	l.m.	2		
17.02	(1.4.3)	Remove & Replace Curb on Gravel Base (Coq-C6)	l.m.	8		
17.03	(1.4.5)	Remove & Replace Concrete Infill - 100mm - Broom Finish.	sq.m	3		
17.04	(1.4.5)	Remove & Replace Concrete Sidewalk - 100mm Thick – Saw Cut Finish	sq.m	5		
<b>18.00</b>	<b>31 23 01S</b>	<b>EXCAVATING, TRENCHING AND BACKFILLING</b>				
18.01	(1.10.3)	Overexcavation (Provisional)	cu.m	12		
18.02	(1.10.9)	Imported Trench Backfill (75mm Minus)	tonne	50		
18.03	(1.10.10)	Removal, Cleaning, and Reinstatement of Maillardville Village Bus Shelter & Bench	l.s.	1		
18.04	(1.10.11)	Removal and Replacement of Bollards and Cross Beams Behind Maillardville Bus Shelter.	l.s.	1		
<b>19.00</b>	<b>32 14 01S</b>	<b>UNIT PAVING</b>				
19.01	(1.6.1)	Remove, Retain, Restore Red Brick Shelter Pad	sq.m	10		
<b>20.00</b>	<b>32 17 23S</b>	<b>PAINTED PAVEMENT MARKINGS</b>				
20.01	(1.5.3)	Supply & Installation Thermoplastic Pavement Markings Where Removed.	Lump Sum	1		
<b>21.00</b>	<b>33 40 01S</b>	<b>STORM SEWERS</b>				
21.01	(1.6.2)	Storm Main PVC SDR35 - 450mm	l.m.	21		
21.02	(1.6.3)	Existing Service or Catchbasin Lead Tie-in / Transfer to New Storm Main	ea.	2		
21.03	(1.6.3)	New Storm Service Connection per MMCD S8	ea.	1		
21.04	(1.6.5)	Catch Basin Lead - 150mm DR35 PVC	l.m.	3		
21.05	(1.6.9)	Drainage Main Tie-in @ Ex. Manhole	ea.	2		
21.06	(1.6.12)	Asbestos Cement Concrete Cutting and Disposal of CB Lead at Tie-in (Provisional)	ea.	2		
<b>22.00</b>	<b>33 44 01S</b>	<b>MANHOLES AND CATCHBASINS</b>				
22.01	(1.5.1.1)	Remove and Replace Existing Manhole Frame and Cover	ea	2		
22.02	1.5.2	Top Inlet Catch Basin Installation - MMCD S11 - Complete	ea	1		
<p style="text-align: right;"><b>Project Totals =</b> (Transfer the amount to Form of Tender Summary Page 1)</p> <p>Name of Contractor: _____</p>						



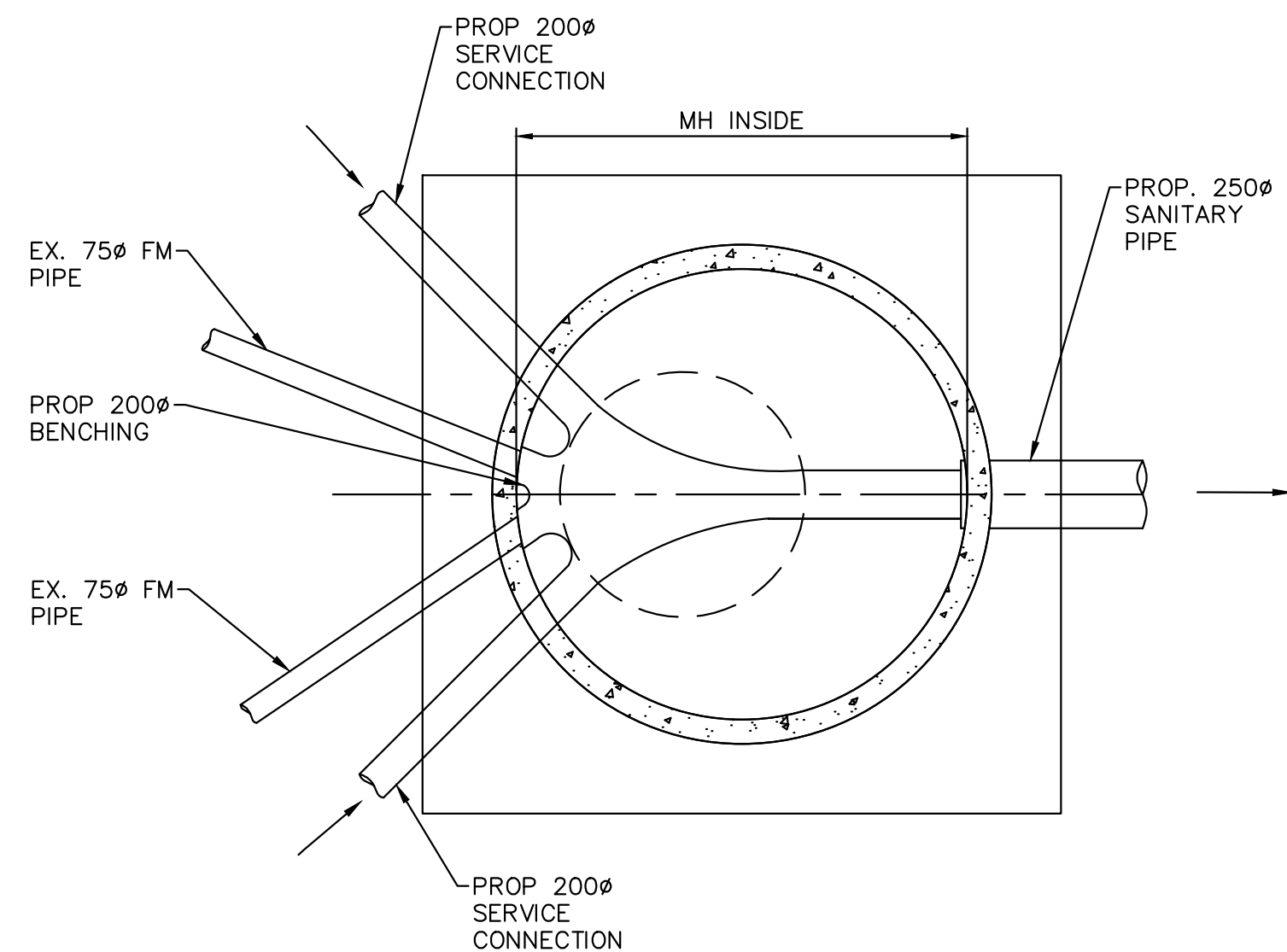




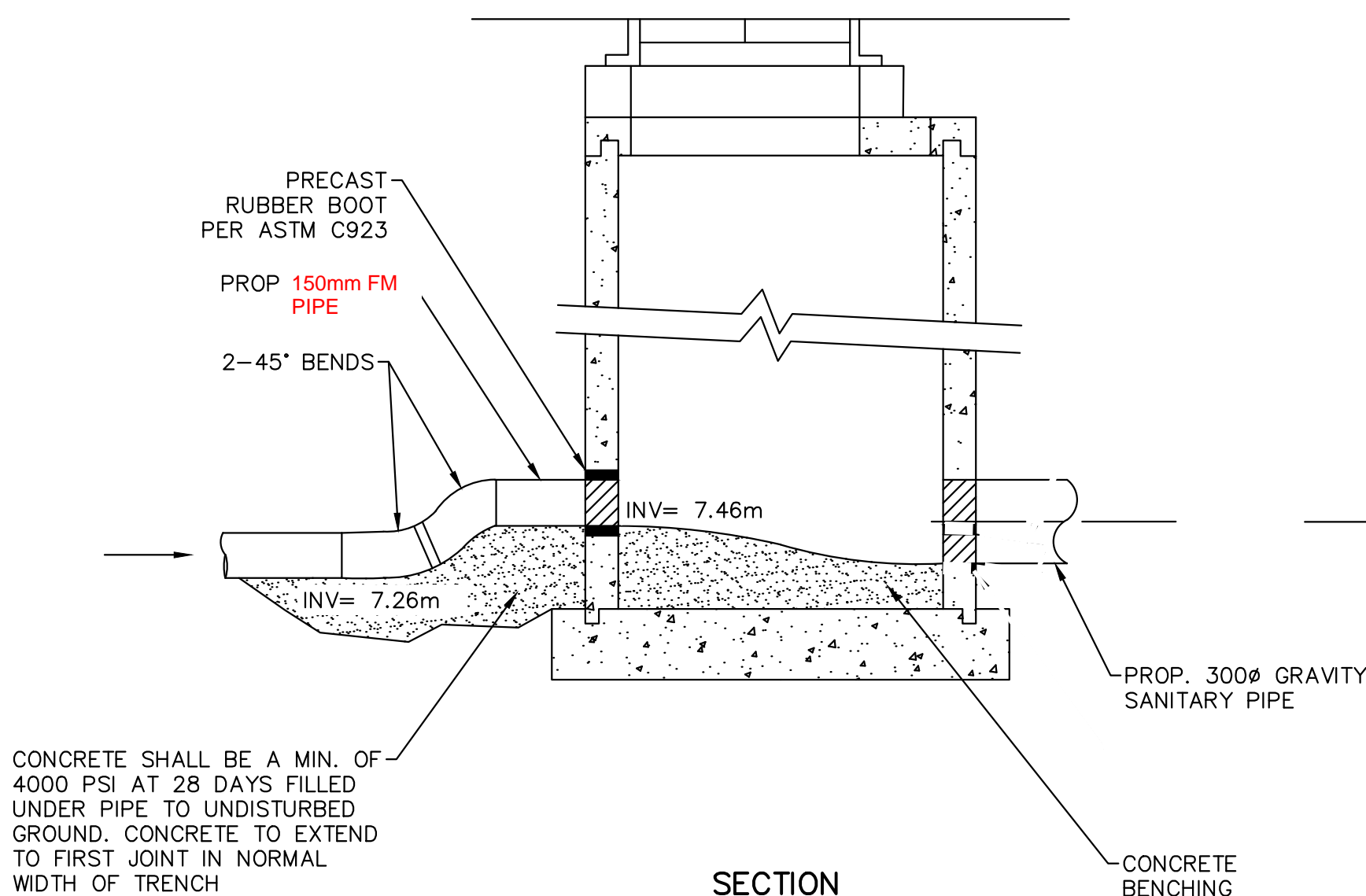
PLAN  
MH S1 TIE-IN DETAIL A-A  
N.T.S.



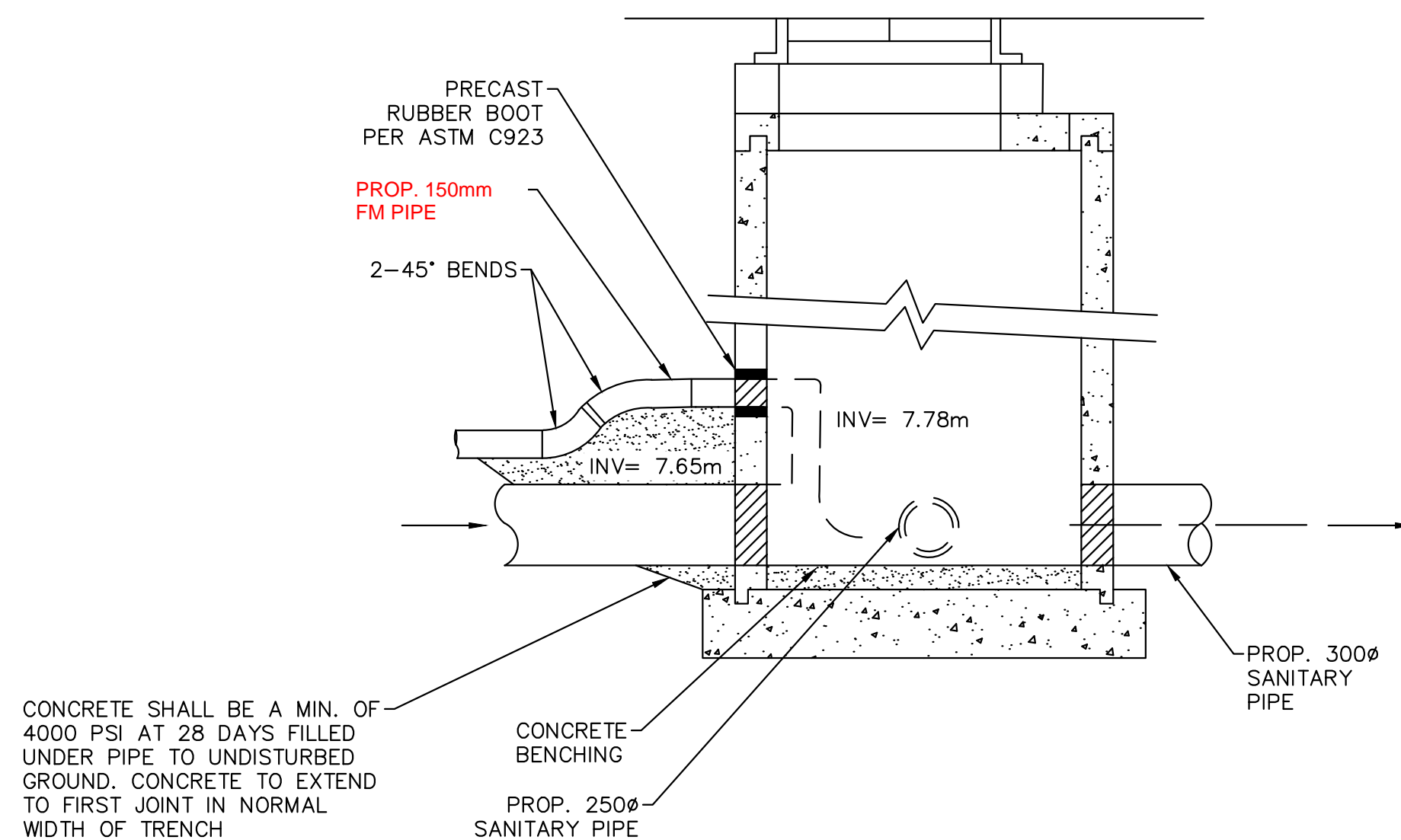
PLAN  
MH S2 TIE-IN DETAIL B-B  
N.T.S.



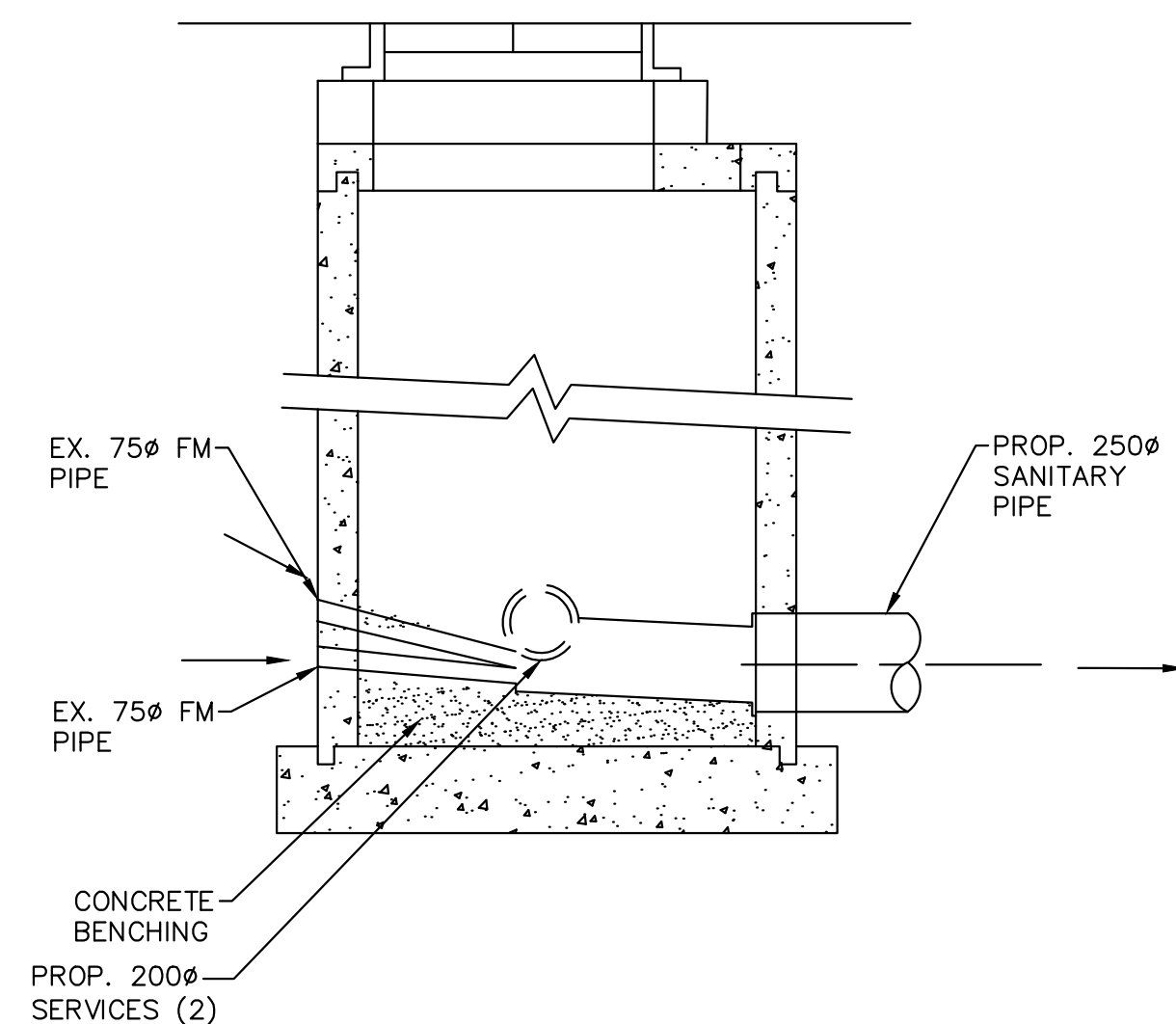
PLAN  
MH S9 TIE-IN DETAIL C-C  
N.T.S.



SECTION  
MH S1 TIE-IN DETAIL A-A  
N.T.S.



SECTION  
MH S2 TIE-IN DETAIL B-B  
N.T.S.



SECTION  
MH S9 TIE-IN DETAIL C-C  
N.T.S.

Benchmark: CGVD28 (GVRD 2018) Scale factor: 0.9995887  
GEODETIC ELEVATIONS ARE DERIVED FROM G.P.S.  
OBSERVATION AT STN.1 LOCATED FRONTING DRIVEWAY OF  
#48 FAWCETT ROAD

Note:  
Contractor to contact Telus, BC Hydro, FortisBC and BC one call  
prior to construction to confirm locations of utilities and  
appurtenances requiring adjustment.

**APLIN MARTIN**  
ENGINEERING ARCHITECTURE PLANNING SURVEYING

EGBC Permit to Practice Number #1001018  
Aplin & Martin Consultants Ltd.  
#201 - 12448 82 Avenue, Surrey, B.C. Canada V3W 3E9  
Tel: (604) 597-9068, Fax: (604) 597-9061, Email: general@aplinmartin.com

No.	Date	By	Revisions
6	12/01/2025	TH	ADDENDUM 1
5	11/19/2025	TAT	ISSUED FOR TENDER
4	06/06/2025	JKA	REVISED 100% DESIGN
3	04/17/2025	JKA	100% DESIGN
2	3/27/2025	JKA	DETAILED DESIGN
1	1/09/2025	JKA	PRELIMINARY DESIGN

ACCEPTED FOR  
CONSTRUCTION  
Date: \_\_\_\_\_

Manager of  
Development Servicing

**Coquitlam**

Engineering & Public Works  
3000 Guildford Way, Coquitlam, B.C. V3B 7N2

PERMIT TO PRACTICE

Signature: \_\_\_\_\_

Date: \_\_\_\_\_

PERMIT NUMBER: 1001018  
The Association of Professional Engineers  
and Geoscientists of British Columbia

Seal:

Design by JKA	Date DECEMBER 2024	Scale 1:500 HOR. 1:50 VERT.
Drawn by JKA	Date DECEMBER 2024	Sheet of 04 OF 04 ADDENDUM 1
Checked by BDC	Date DECEMBER 2024	Eng. Project No. XXX
Approved by BDC	Date DECEMBER 2024	A&M Project No. 15-001

Project  
**FAWCETT ROAD &  
HARTLEY AVENUE**

Description  
**STA 2+360 TO 2+560**

File: 15-001 - SANITARY WORKS