



2026 Visual Arts Exhibition

Artist Information Package

Application Intake Period
January 19, 2026 to February 8, 2026

2026/27 Visual Arts Exhibition

Artist Information Package

Application Intake Period: January 19, 2026 to February 8, 2026

Thank you for your interest in being a part of the City of Coquitlam 2026/07 Visual Arts Exhibition Program. Please read the information below regarding the Call for Artists Entries and submit an Application Form and support materials digitally or by mail by February 8, 2026 at 11:59 p.m.

Display Period and Exhibition Installations

Group Exhibition:

September 10, 2026 – March 1, 2027 at Town Centre Park Community Centre

Solo Exhibitions:

April 6, 2026 – September 10, 2026 at City Hall

September 10, 2026 – March 1, 2027 at City Hall

Visual Arts Exhibition

The City of Coquitlam is focused on identifying and increasing opportunities for local, emerging artists to display two-dimensional visual artwork in civic facilities. The goal of the Visual Arts Exhibition program is to showcase local talent, integrating art into the community.

Local artists from the Metro Vancouver area, with preference given to artists based in Coquitlam, are invited to submit an application to have their two-dimensional visual artwork in the mediums of painting, drawings, photographs, collage and prints to be displayed either as a solo exhibition or as a part of a group exhibition.

Applicants must apply to either a solo exhibition or the group exhibition; applications submitted for both will not be considered.

Artists submitting work for the first time are encouraged to apply to the group exhibition; while more experienced artists may wish to apply for a solo exhibition. The Visual Arts Exhibitions, both solo and group, are open to all emerging artists aged 16 and up, who are not represented by a professional gallery.

Group Exhibition Theme

The 2026 – 2007 Group Exhibition will explore the theme of **City Life: Art Inspired by Urban Living**. Submissions may reflect the rhythms, spaces, communities or experiences that shape life in the city.

2026/27 Visual Arts Exhibition

Artist Information Package

Rules for Entries (Group Exhibition)

- Applications will be accepted from all artists living in Metro Vancouver, with preference given to Coquitlam artists.
- An artist may only submit one application per intake.
- Up to two artworks may be submitted for consideration per artist. If accepted into the exhibition, only one artwork will be selected for the exhibition.
- Artists must submit photos of original two-dimensional visual artwork for consideration (examples include paintings, drawings, photographs, collage and prints).
- Applicants must indicate how the visual artwork submitted reflects the stated theme.
- Accepted visual artwork must be delivered for the exhibition, as arranged with staff. Work must be dry, framed, completed, include d-rings and/or otherwise be ready for installation.
- The dimensions of each artwork must fit within the guidelines of the spaces available. See below for criteria and location of display allocation.
- All artwork submitted must remain on display for the duration of the exhibition.

Accepted artists from the previous year's exhibitions are eligible to apply, however please note that preference may be given to those who have exhibited as a part of the program previously.

Artwork Selection: Group Exhibition Criteria

- Submissions are original two-dimensional artwork(s) made by the artist.
- Content/subject matter reflects the Coquitlam community.
- Content is suitable for a public space and all audiences.
- Content aligns with the stated theme.

Rules for Entries (Solo Exhibition)

- Applications will be accepted from all artists living in Metro Vancouver, with preference given to Coquitlam artists.
- The solo exhibition does not have a set theme. Selected artists are asked to present a cohesive body of artwork that is thematically similar and highlights their artistic portfolio.
- Artists must submit up to four photos of original two-dimensional visual artwork for consideration (examples include paintings, drawings, photographs, collage and prints).
- One artist will be selected for each solo exhibition based on their submission and depending on the size of the artwork, seven to 10 pieces will be required for the exhibition.
- Accepted visual artwork must be delivered for exhibition, as arranged with staff. Work must be dry, framed, completed, include d-rings and/or otherwise be ready for installation.
- The dimensions of each artwork must fit within the guidelines of the spaces available. See below for criteria and location of display allocation.
- All artwork submitted must remain on display for the duration of the exhibition.

2026/27 Visual Arts Exhibition

Artist Information Package

Artwork Selection: Solo Exhibition Criteria

- Submissions are original two-dimensional artwork(s) made by the artist.
- Cohesive body of artwork that is thematically similar.
- Content/subject matter reflects the Coquitlam community.
- Content is suitable for a public space and all audiences.

Jurors

A panel of volunteer jurors will review applications for the Visual Arts Group and Solo Exhibitions. Jurors will be comprised of members from the City of Coquitlam Cultural Services Advisory Committee.

Accepted Artists

- Selected artists will be required to enter into an Artist Agreement with the City.
- Artists will receive an honorarium.
- Artists are asked to sign a Photo Release Form allowing the City of Coquitlam to take and use photos of them and/or their artwork for promotion and recording purposes.
- The City of Coquitlam has sole discretion to reject an artwork(s) at any time prior to or during the exhibition and to determine the location of where the selected artwork will be displayed.
- Artists are only permitted to show artwork that is not up for consideration or accepted into another exhibition that is running at the same time.

Artwork can be available for sale to the public while on display, but prices will not be listed on exhibition signage. All inquiries from perspective buyers will be directed to the artist for response, and 100% of all the sales generated goes to the artist. Artwork that has been purchased will not be removed from the exhibit until the exhibit period is complete.

2026/27 Visual Arts Exhibition

Artist Information Package

Display Space Options

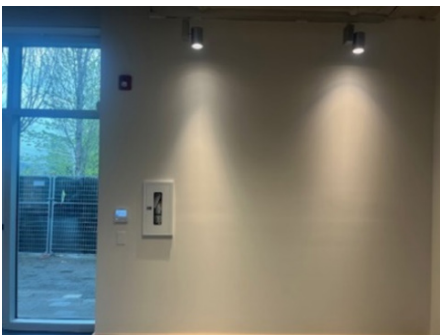
Group exhibition

Town Centre Park Community Centre (1207 Pinetree Way, Coquitlam)

Full Space:



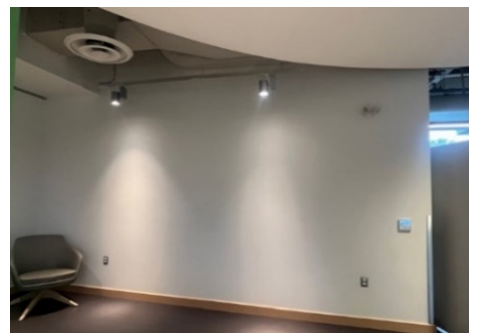
Left Wall: 10 feet (W) x 10 feet (H)



Middle Wall: 20 feet (W) x 10 feet (H)



Right Wall: 17 feet (W) x 10 feet (H)



2026/27 Visual Arts Exhibition

Artist Information Package

Solo Exhibitions

City Hall (3000 Guildford Way, Coquitlam)

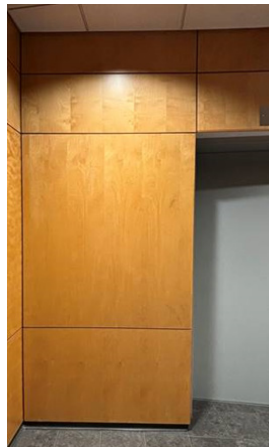
Full space:



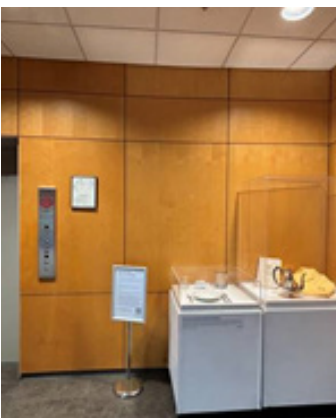
Left Wall: 7 feet (W) x 9 feet (H)



Middle Wall: 4 feet (W) x 9 feet (H)



Middle Wall: 9 feet (W) x 9 feet (H)



Right Wall: 7 feet (W) x 9 feet (H)



2026/27 Visual Arts Exhibition

Artist Information Package

Equity, Diversity and Inclusion in Coquitlam

Equity, diversity and inclusion (EDI) is about breaking down barriers to ensure that everyone – regardless of age, ability, race, culture, gender, sexual orientation and other diversity characteristics – is able to live, work and thrive in a safe and welcoming environment.

As an organization, Coquitlam is on a journey to better serve our vibrant and diverse community by applying EDI principles to all City work, policies, operations, language and services. EDI is a top organizational priority that guides decision-making across all lines of business. Learn more at coquitlam.ca/EDI.

Acknowledgement

We acknowledge with gratitude and respect that the name Coquitlam was derived from the hə́hə́mihə́h (HUN-kuh-MEE-num) word kʷikʷə́lə́m (kwee-KWET-lum) meaning “Red Fish Up the River”. The City is honoured to be located on the kʷikʷə́lə́m traditional and ancestral lands, including those parts that were historically shared with the qíćə́y (kat-zee), and other Coast Salish Peoples.