

# Schedule C: Environmentally Sensitive Areas and Hazard Lands

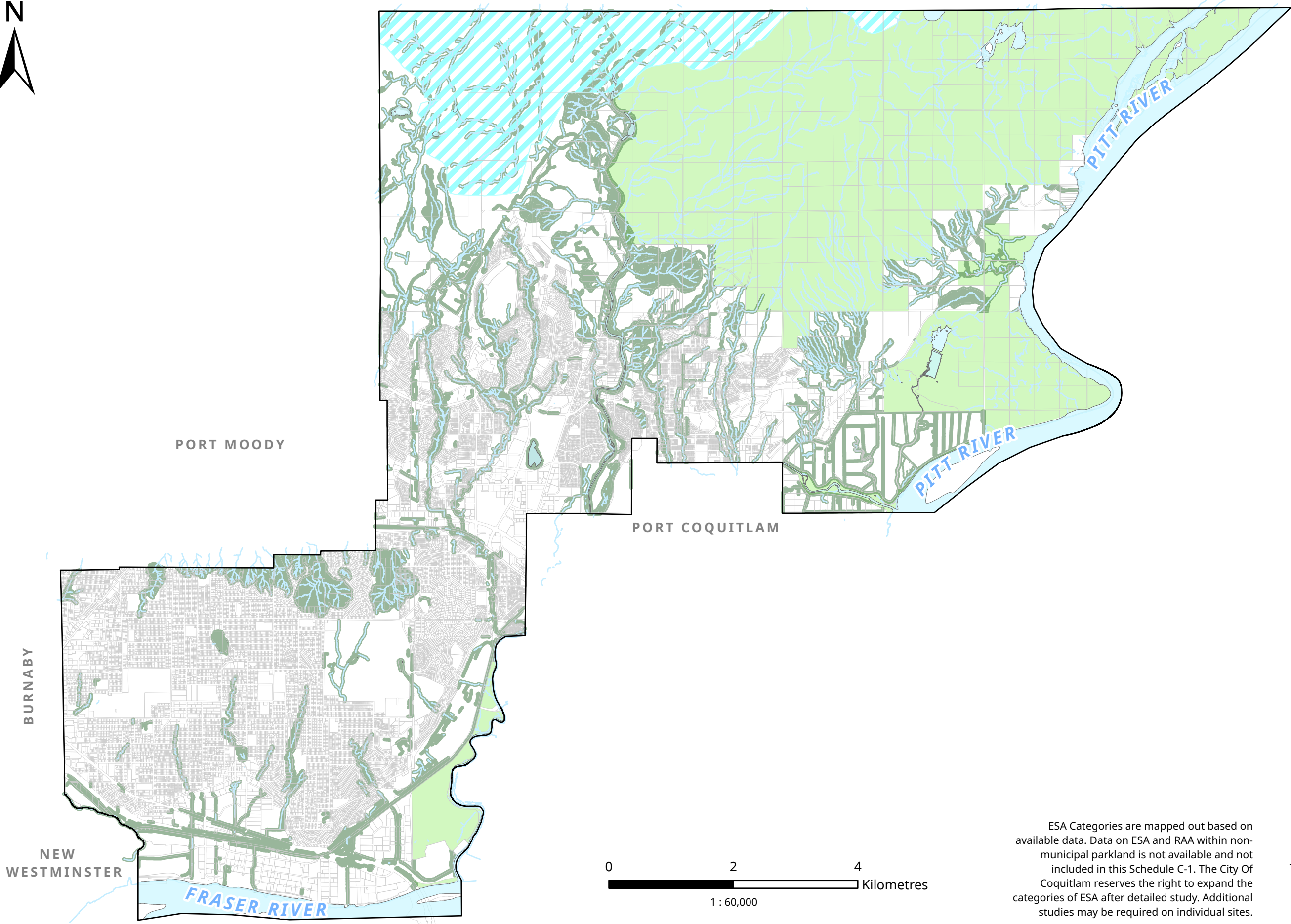
Maps showing environmentally sensitive areas, steep slopes, and floodplains.

C-1 Environmentally Sensitive Areas Map

C-2 Steep Slopes Map

C-3 Floodplains Map

# Schedule C-1: Environmentally Sensitive Areas Map



## Legend

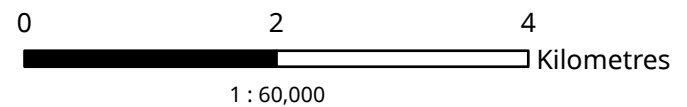
- City Boundary
  - Water Bodies
  - Watercourses
- Environmentally Sensitive Areas**
- Protected Resource — Watershed
  - Non-municipal Parkland
  - Riparian Assessment Areas

PORT MOODY

PORT COQUITLAM

BURNABY

NEW WESTMINSTER

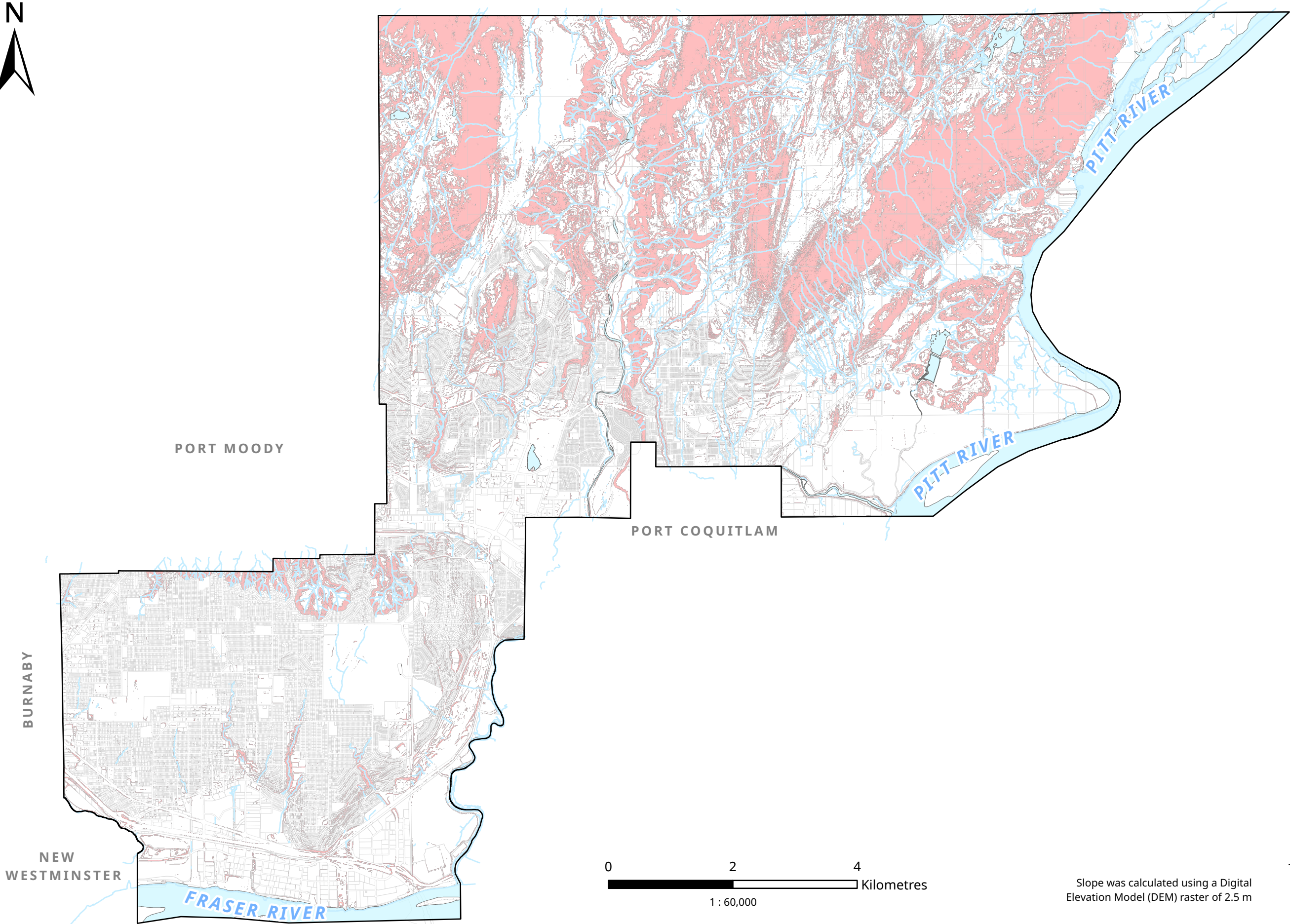


ESA Categories are mapped out based on available data. Data on ESA and RAA within non-municipal parkland is not available and not included in this Schedule C-1. The City of Coquitlam reserves the right to expand the categories of ESA after detailed study. Additional studies may be required on individual sites.

Date Adopted: XXXX  
Bylaw No: 5511, 2026  
Datum: UTM NAD1983

This map is for general information only. The City of Coquitlam does not guarantee its accuracy. All information should be verified with the City's Planning and Development Department.

# Schedule C-2: Steep Slopes Map



## Legend

- City Boundary
- Water Bodies
- Watercourses
- Steep Slopes**
  - Steep Slopes over 30% Grade

PORT MOODY

PORT COQUITLAM

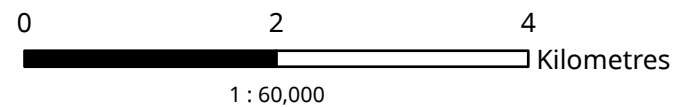
BURNABY

NEW WESTMINSTER

FRASER RIVER

PITT RIVER

PITT RIVER

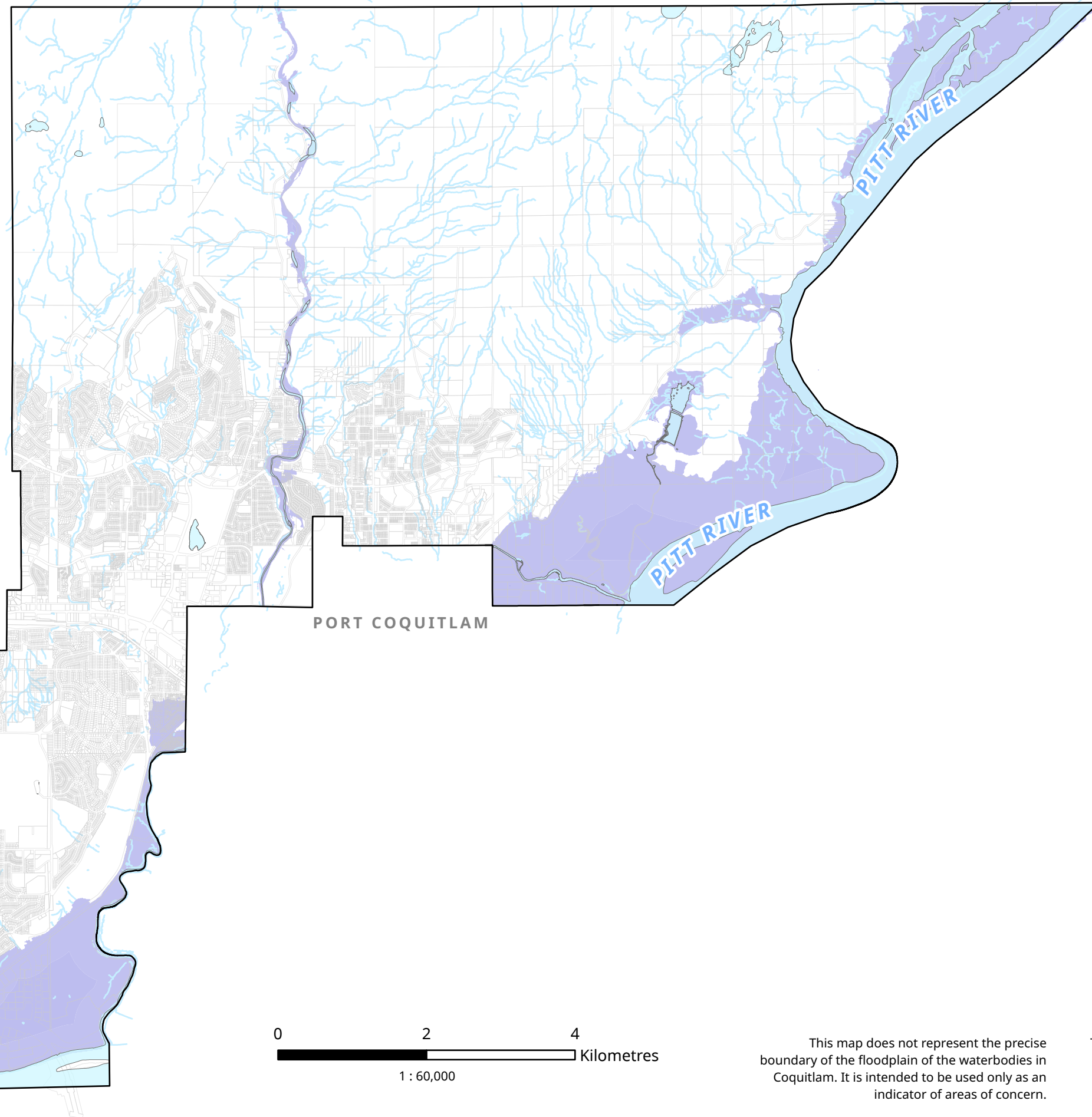


Slope was calculated using a Digital Elevation Model (DEM) raster of 2.5 m

Date Adopted: XXXX  
Bylaw No: 5511, 2026  
Datum: UTM NAD1983

This map is for general information only. The City of Coquitlam does not guarantee its accuracy. All information should be verified with the City's Planning and Development Department.

# Schedule C-3: Floodplains Map



## Legend

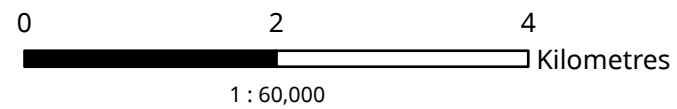
- City Boundary
- Water Bodies
- Watercourses
- Floodplain Areas**
  - Floodplains

PORT MOODY

PORT COQUITLAM

BURNABY

NEW WESTMINSTER



This map does not represent the precise boundary of the floodplain of the waterbodies in Coquitlam. It is intended to be used only as an indicator of areas of concern.

This map is for general information only. The City of Coquitlam does not guarantee its accuracy. All information should be verified with the City's Planning and Development Department.

Date Adopted: XXXX  
Bylaw No: 5511, 2026  
Datum: UTM NAD1983