



Schedule E: Parks and Community Facilities

Maps showing existing and future community facilities, parks, and schools.

E-1 Community Facilities Map

E-2 Parks Map

E-3 School Location Map

Schedule E-1: Community Facilities Map



Legend

- City Boundary
- Water Bodies

Community Safety and Services

Existing

- Fire Halls
- ▲ Police Offices

Future

- Fire Halls
- △ Police Offices

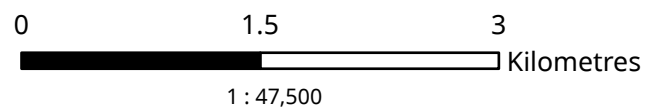
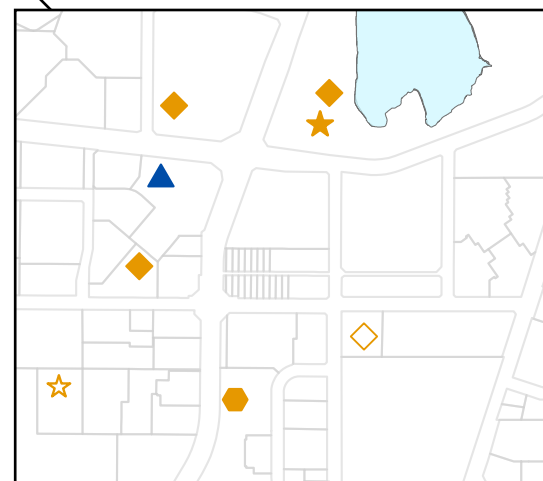
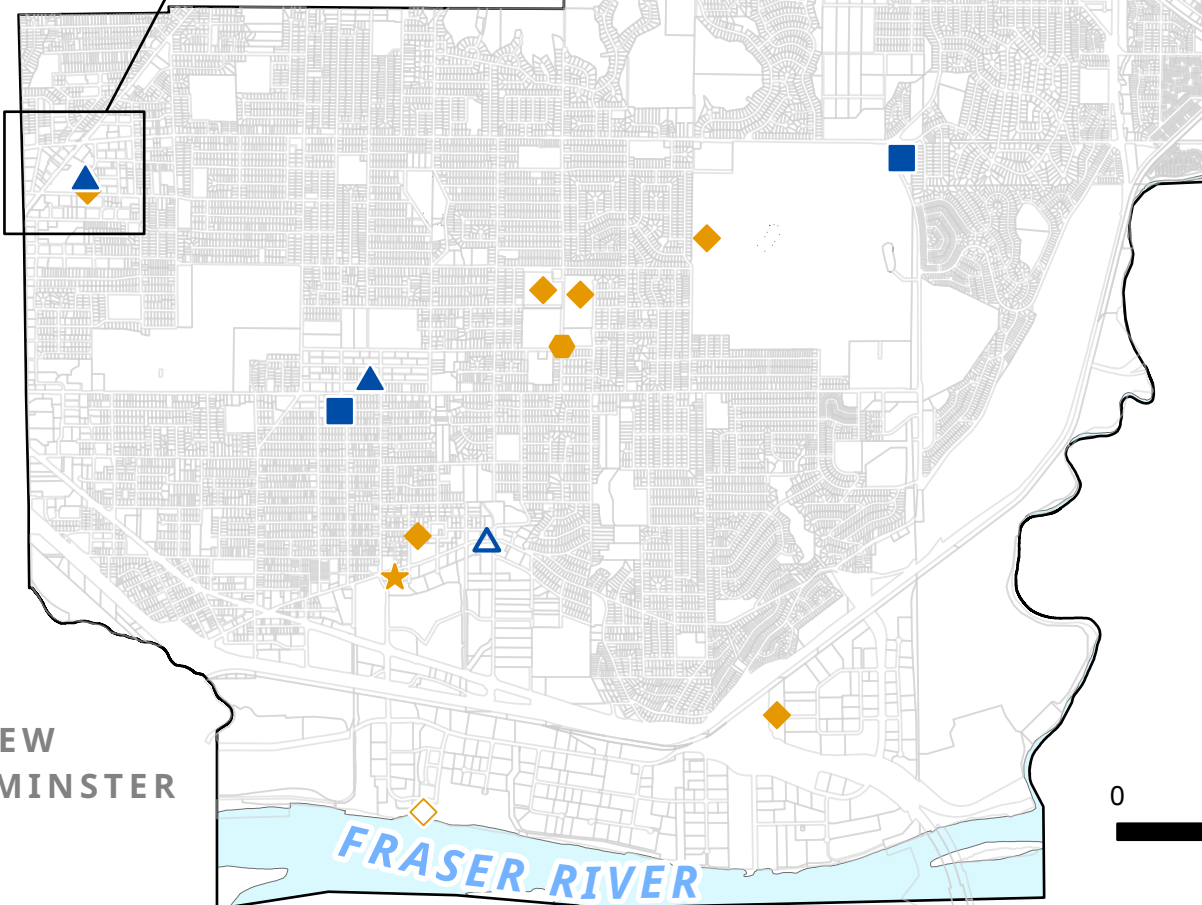
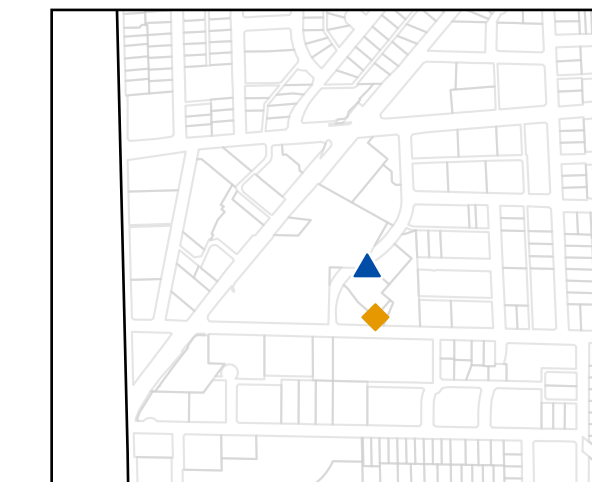
Community Facilities

Existing

- ★ Arts & Culture Facilities
- Libraries
- ◆ Recreation Facilities

Future

- ☆ Arts & Culture Facilities
- ◇ Libraries
- ◇ Recreation Facilities



This map only identifies the general location of major public facilities and does not depict all facilities provided by the City. One point on the map may identify multiple facilities that are located within the same area. Certain facilities are provided in conjunction with non-City partners.

Locations of these amenities are conceptual and may not represent the exact locations of this amenity. Final locations and types will be determined during detailed design process.

Date Adopted: XXXX
Bylaw No: 5511, 2026
Datum: UTM NAD1983

This map is for general information only. The City of Coquitlam does not guarantee its accuracy. All information should be verified with the City's Planning and Development Department.

BURNABY

NEW WESTMINSTER

FRASER RIVER

PORT COQUITLAM

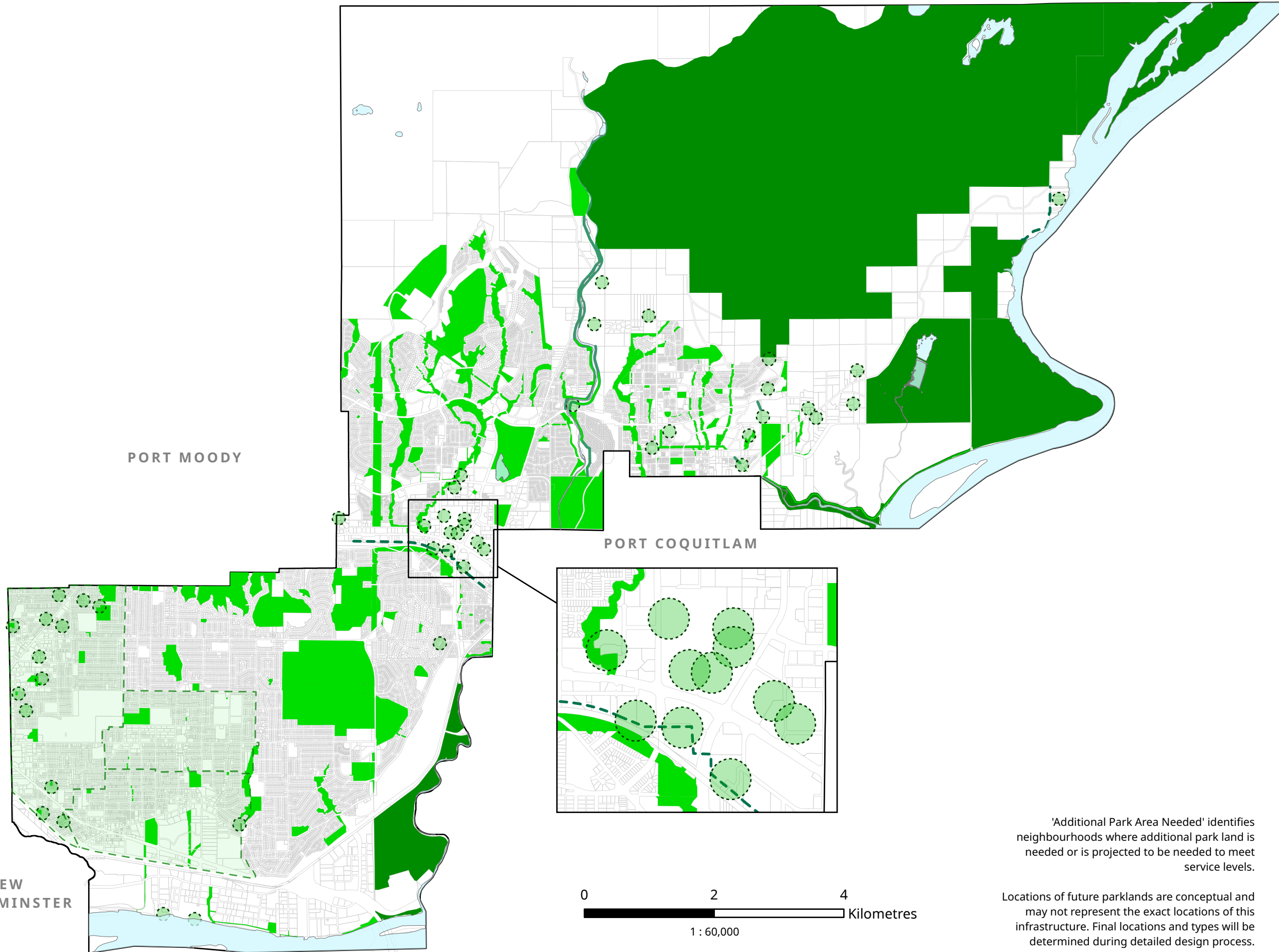
PITT RIVER

Schedule E-2: Parks Map



Legend

- City Boundary
- Water Bodies
- Existing Parks**
- Municipal Parks
- Non-municipal Parks
- Future Parks**
- Future Parks & Park Expansions
- Future Linear Parks
- - - Additional Park Area Needed



'Additional Park Area Needed' identifies neighbourhoods where additional park land is needed or is projected to be needed to meet service levels.

Locations of future parklands are conceptual and may not represent the exact locations of this infrastructure. Final locations and types will be determined during detailed design process.

Date Adopted: XXXX
 Bylaw No: 5511, 2026
 Datum: UTM NAD1983

This map is for general information only. The City of Coquitlam does not guarantee its accuracy. All information should be verified with the City's Planning and Development Department.

Schedule E-3: School Location Map



Legend

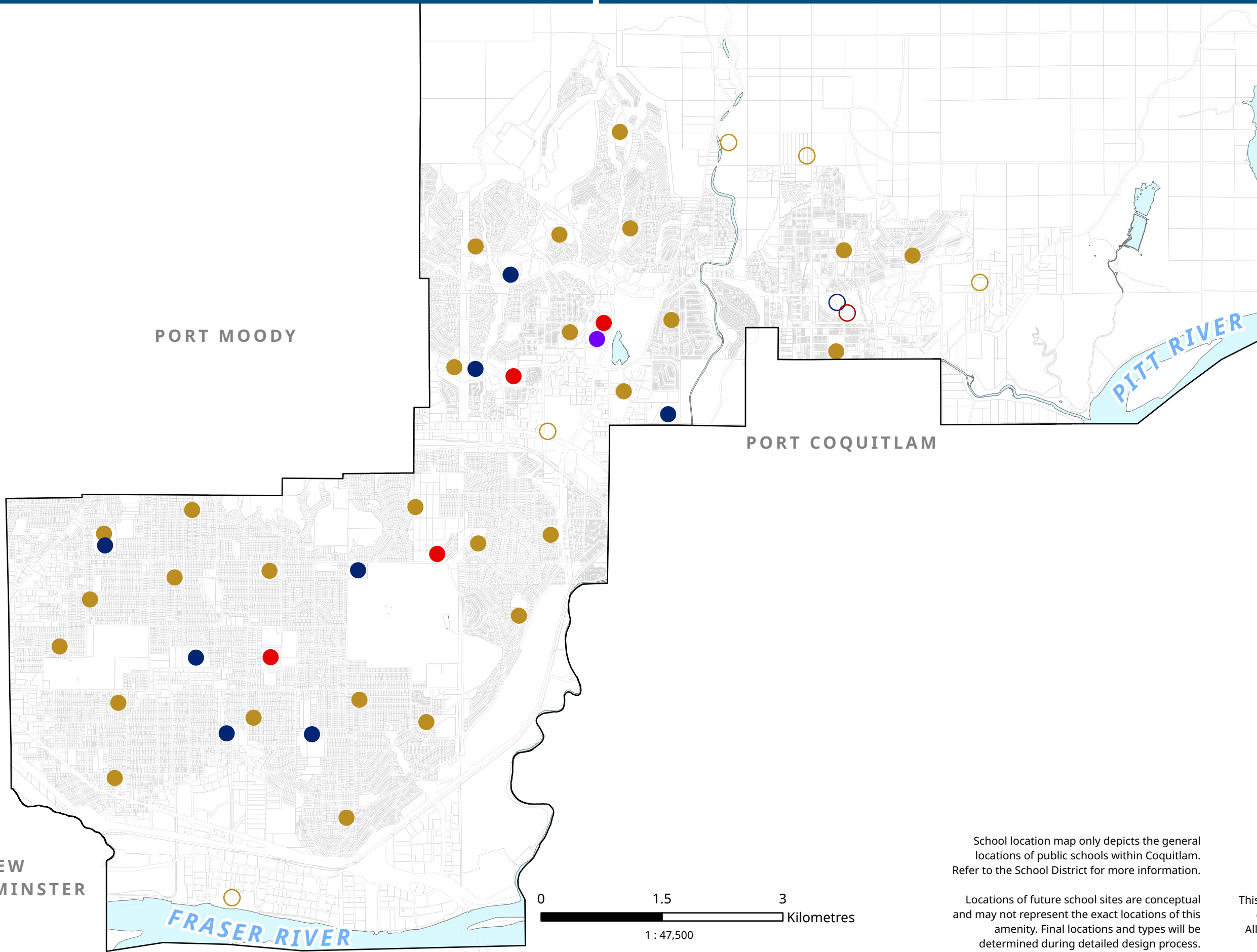
- City Boundary
- Water Bodies

Existing School Sites

- Elementary
- Middle
- Secondary
- Post-secondary

Future School Sites

- Elementary
- Middle
- Secondary



PORT MOODY

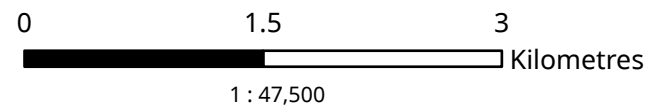
PORT COQUITLAM

PITT RIVER

FRASER RIVER

BURNABY

NEW WESTMINSTER



School location map only depicts the general locations of public schools within Coquitlam. Refer to the School District for more information.

Locations of future school sites are conceptual and may not represent the exact locations of this amenity. Final locations and types will be determined during detailed design process.

Date Adopted: XXXX
Bylaw No: 5511, 2026
Datum: UTM NAD1983

This map is for general information only. The City of Coquitlam does not guarantee its accuracy. All information should be verified with the City's Planning and Development Department.