

Schedule G: Development Permit Areas

Maps identifying areas where development permits are required. Supports the Development Permit Area designations in Schedule A and development permit guidelines in Schedule H.

G-1 Watercourse Protection DPA Map

G-2 Wildfire Hazard DPA Map

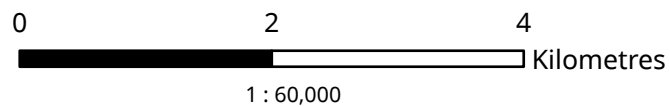
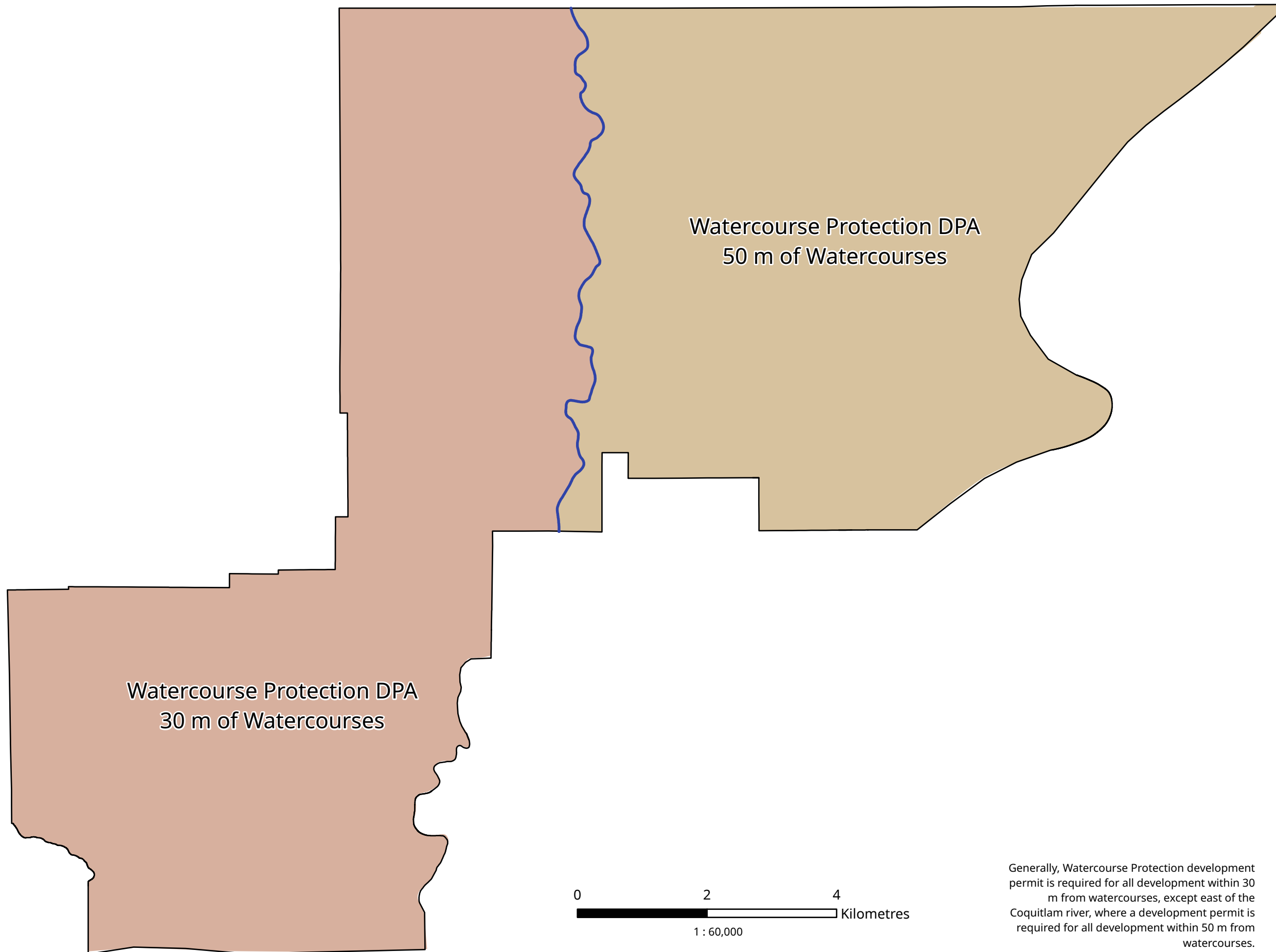
G-3 Unstable Slopes DPA Map

Schedule G-1: Watercourse Protection DPA Map



Legend

- City Boundary
- Centreline of Coquitlam River



Generally, Watercourse Protection development permit is required for all development within 30 m from watercourses, except east of the Coquitlam river, where a development permit is required for all development within 50 m from watercourses.

Date Adopted: XXXX
Bylaw No: 5511, 2026
Datum: UTM NAD1983

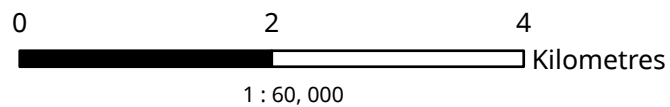
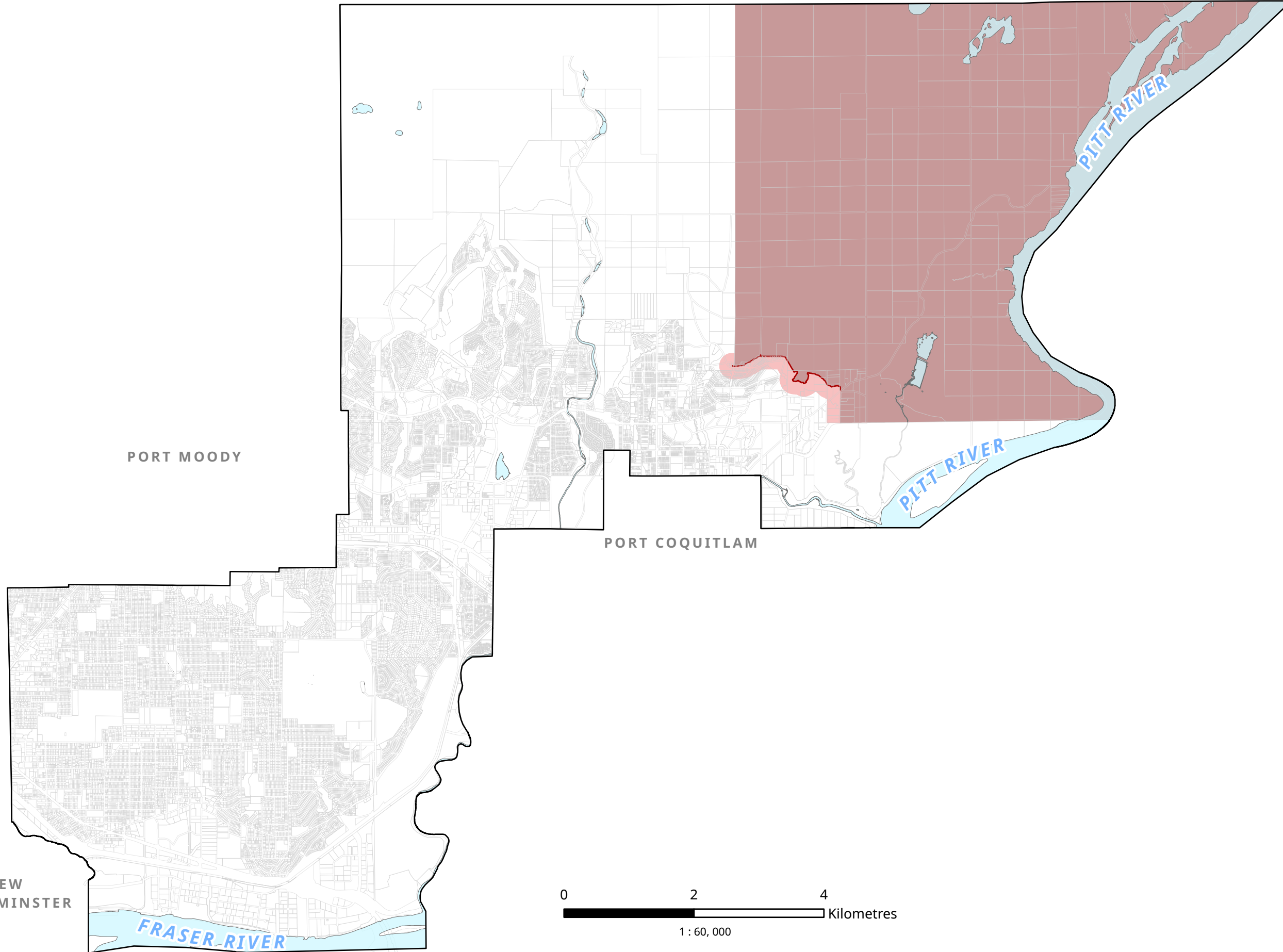
This map is for general information only. The City of Coquitlam does not guarantee its accuracy. All information should be verified with the City's Planning and Development Department.

Schedule G-2: Wildfire Hazard DPA Map



Legend

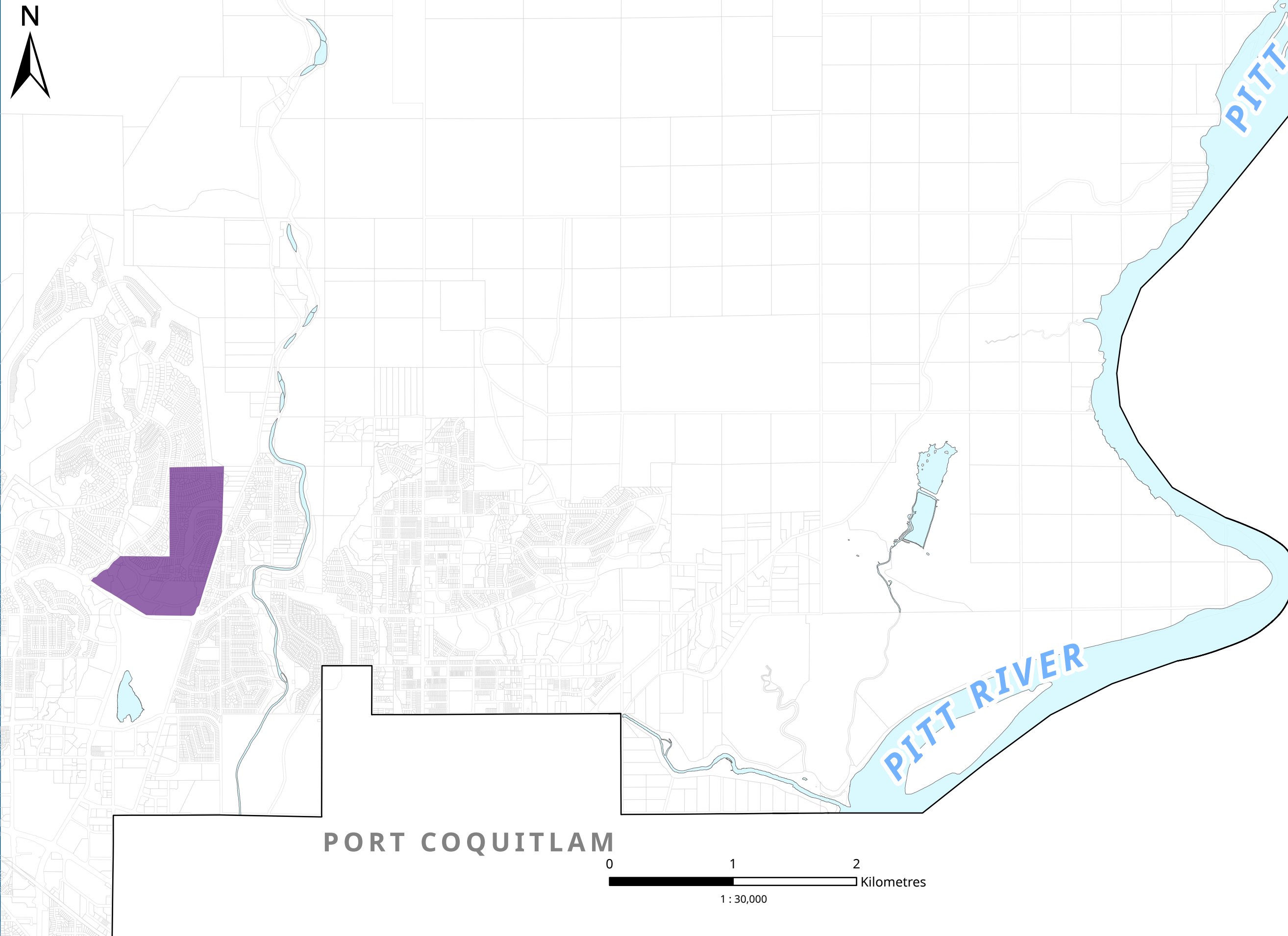
- City Boundary
- Water Bodies
- Wildfire Interface Area
- Wildfire Hazard Area
- Interface Wildfire Risk Management Boundary





Date Adopted: XXXX
Bylaw No: 5511, 2026
Datum: UTM NAD1983

This map is for general information only. The City of Coquitlam does not guarantee its accuracy. All information should be verified with the City's Planning and Development Department.

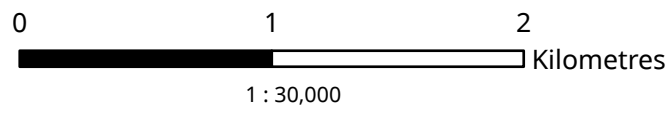
Schedule G-3: Unstable Slopes DPA Map



Legend

-  Water Bodies
-  Unstable Slopes Development Permit Area

PORT COQUITLAM



Date Adopted: XXXX
Bylaw No: 5511, 2026
Datum: UTM NAD1983

This map is for general information only. The City of Coquitlam does not guarantee its accuracy. All information should be verified with the City's Planning and Development Department.