

CITY OF COQUITLAM

3000 GUILDFORD WAY, COQUITLAM, BC V3B 7N2

AUSTIN HEIGHTS SEWER UPGRADE PHASE 5 CONTRACT 84495-5 ISSUED FOR TENDER

LEGEND		
EXISTING	PROPOSED	DESCRIPTION
---○---	---○---	IRON PROPERTY PIN
[Hatched Box]	[Hatched Box]	BUILDING
[Hatched Line]	[Hatched Line]	EDGE OF PAVEMENT
[Hatched Line]	[Hatched Line]	CURB & GUTTER
[Hatched Line]	[Hatched Line]	TRUCK ROUTE
---S---S---	---S---S---	SANITARY SEWER
---S---S---	---S---S---	SANITARY CONNECTION & INSPECTION CHAMBER
---D---D---	---D---D---	STORM SEWER
---D---D---	---D---D---	STORM CONNECTION & INSPECTION CHAMBER
---D---D---	---D---D---	STORM SEWER SERVICE
---FD---	---FD---	FRENCH DRAIN
---CO---D---	---CO---D---	STORM SEWER & CLEANOUT
[Box]	[Box]	CATCH BASIN - TOP INLET & SIDE INLET
[Circle]	[Circle]	LAWN DRAIN
[Circle]	[Circle]	CATCH BASIN MANHOLE
[Line]	[Line]	SWALE
[Line]	[Line]	DITCH
[Hatched Box]	[Hatched Box]	SIDEWALK (ASPHALT)
[Hatched Box]	[Hatched Box]	SIDEWALK (CONCRETE)
[Line]	[Line]	RETAINING WALL
---W---	---W---	WATERMAIN
---W---	---W---	WATER SERVICE CONNECTION
---W---	---W---	WATER VALVE
---W---	---W---	AIR VALVE
[Symbol]	[Symbol]	HYDRANT & VALVE ASSEMBLY
[Symbol]	[Symbol]	YARD HYDRANT
---W---	---W---	CAPPED END
---W---	---W---	WATER METER
---W---	---W---	BLOW-OFF
---T---T---	---T---T---	UNDERGROUND TELEPHONE & MANHOLE
---E---E---	---E---E---	UNDERGROUND ELECTRICAL & MANHOLE
---G---G---	---G---G---	GASMAIN
---L---L---	---L---L---	TRAFFIC SIGNAL & STREET LIGHT U/G DUCTS
[Symbol]	[Symbol]	ORNAMENTAL STREET LIGHT - DAVIT
[Symbol]	[Symbol]	ORNAMENTAL STREET LIGHT - POST TOP
[Symbol]	[Symbol]	UTILITY POLE
[Symbol]	[Symbol]	UTILITY POLE W/ LIGHT
[Symbol]	[Symbol]	JUNCTION BOX
[Symbol]	[Symbol]	GROUND ELEVATION
[Symbol]	[Symbol]	DIRECTION OF OVERLAND FLOW

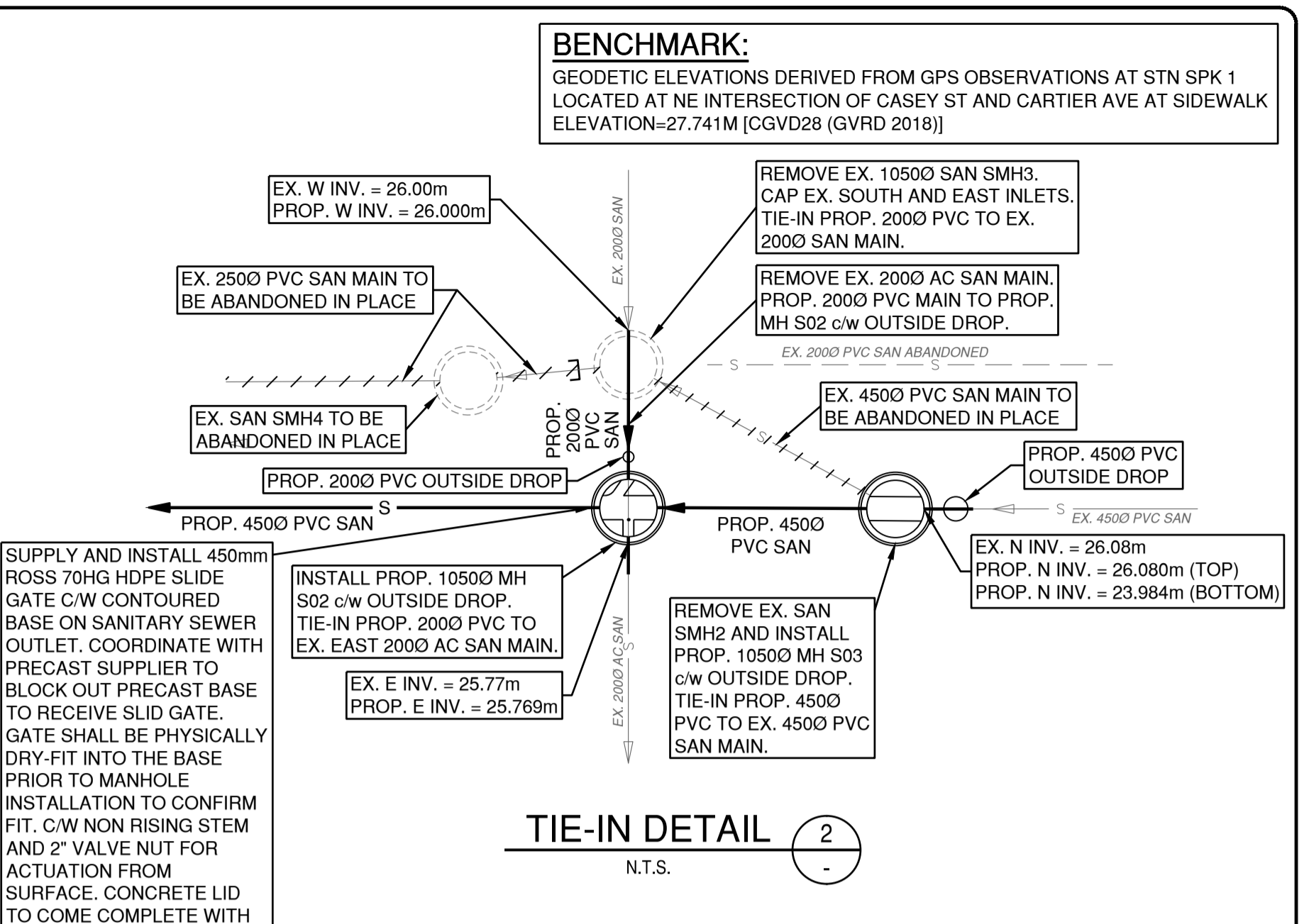
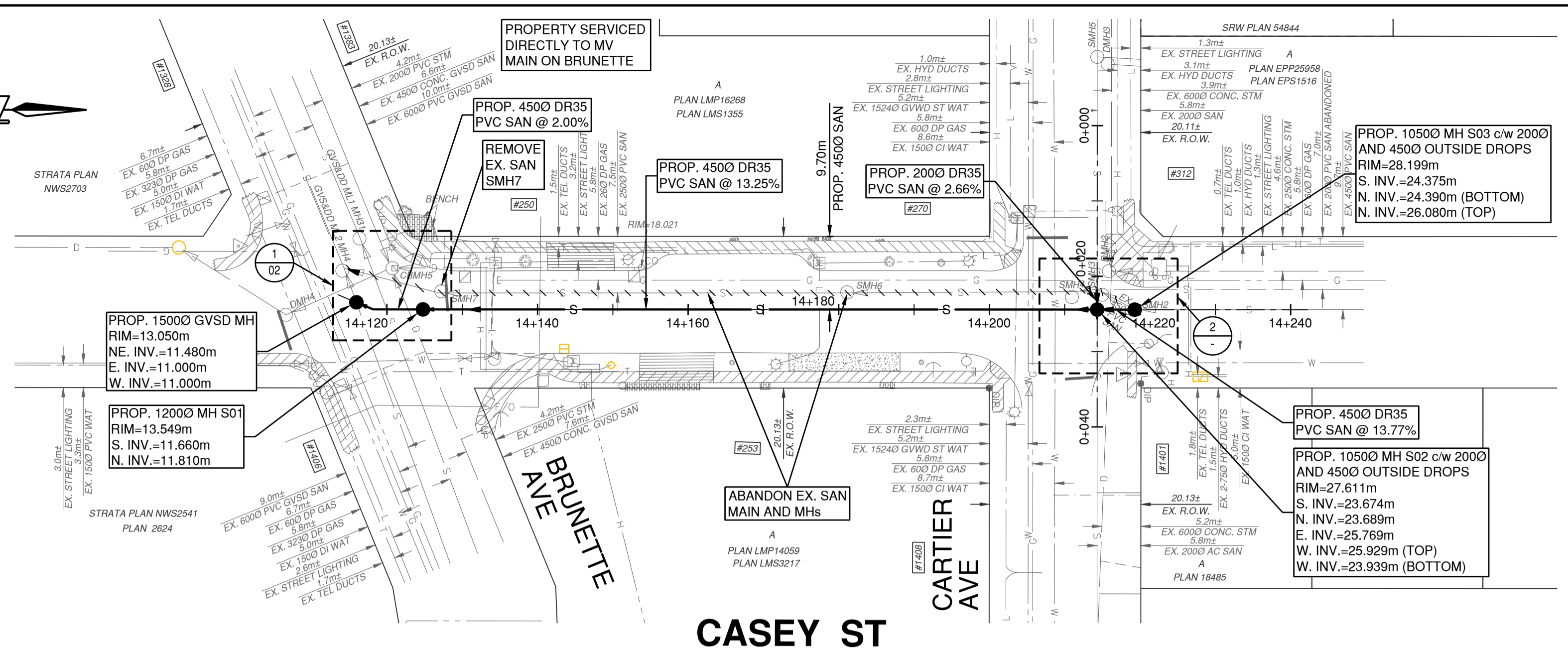


SITE MAP
SCALE 1:5000

DRAWING INDEX				
SHEET #	DWG. TITLE	STREET NAME	LOCATION	RFB DWG. #
	COVER SHEET			
01	SANITARY SEWER - PLAN & PROFILE	CASEY ST	BRUNETTE AVE TO CARTIER AVE	21-0989-14-S1
02	SANITARY SEWER - DETAILS - SHEET 1 OF 2	CASEY ST	BRUNETTE AVE TO CARTIER AVE	21-0989-14-ND1
03	SANITARY SEWER - DETAILS - SHEET 2 OF 2	CASEY ST	BRUNETTE AVE TO CARTIER AVE	21-0989-14-ND2

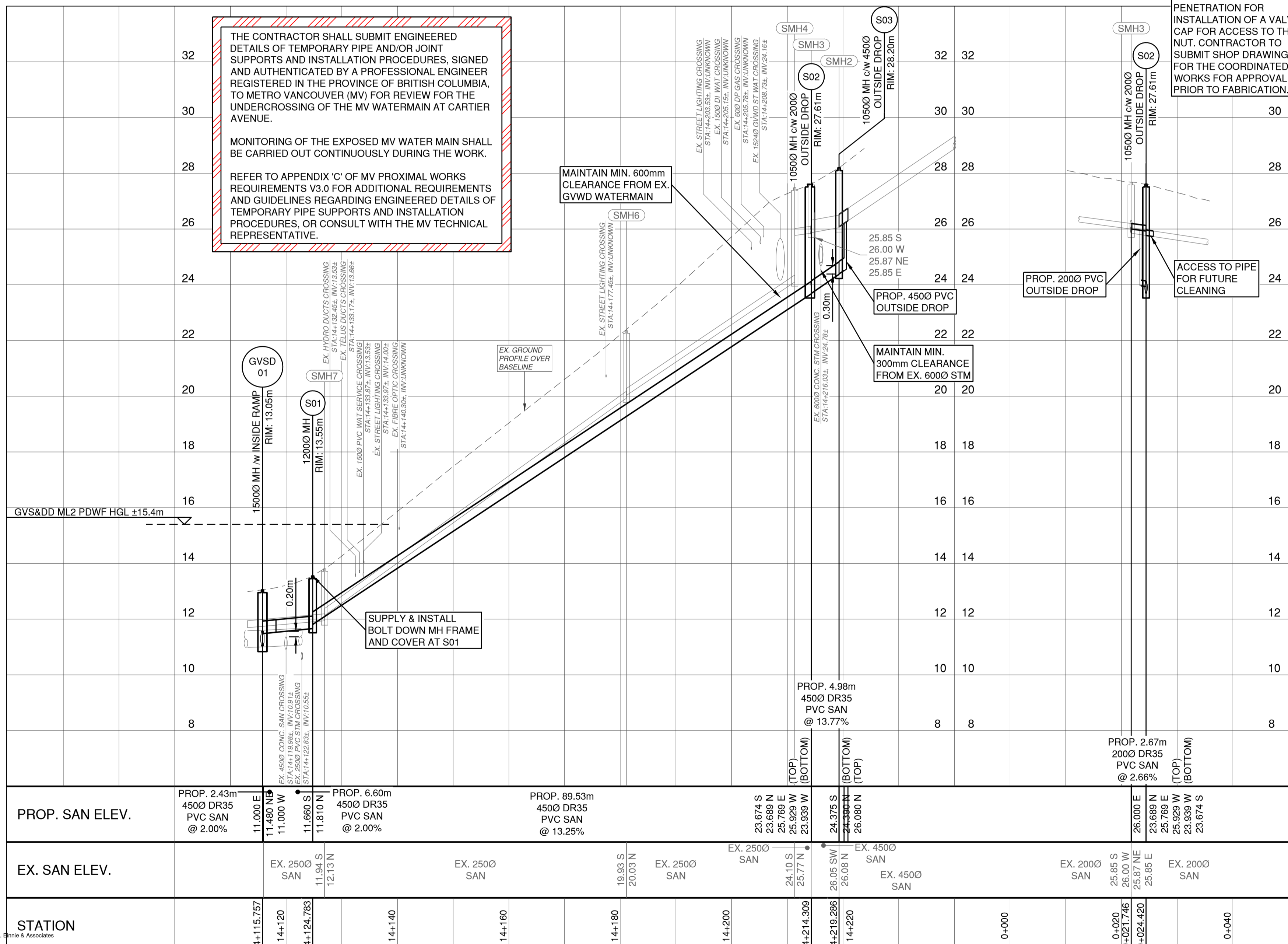


R.F. BINNIE & ASSOCIATES LTD.
300 - 4940 Canada Way,
Burnaby, BC V5G 4K6
TEL 604 420 1721
BINNIE.com

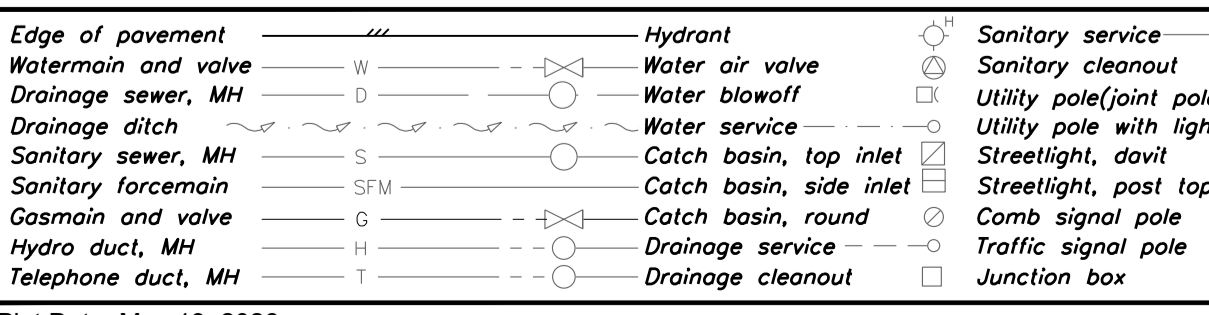
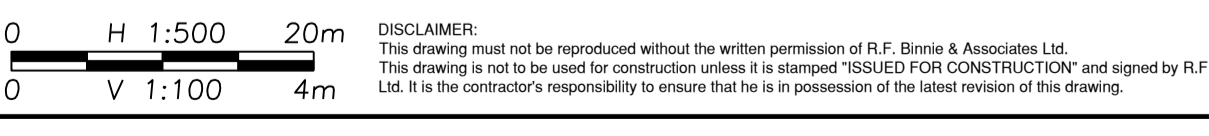


- METRO VANCOUVER WATER NOTES:**
- TO ARRANGE FOR A MV REPRESENTATIVE, PLEASE CONTACT MV UTILITY OPERATIONS' PLANNERS AT (604) 522-7405, NO LESS THAN 10 BUSINESS DAYS PRIOR TO THE COMMENCEMENT OF CONSTRUCTION.
 - THE CONTRACTOR IS RESPONSIBLE FOR VERIFYING THE DEPTH AND LOCATION OF THE MV WATER MAIN PRIOR TO CONSTRUCTION. IF THE WATER MAIN IS EXPOSED, A HYDRO EXCAVATOR SHALL BE USED (OR AUTHORIZED OTHERWISE) AND A MV REPRESENTATIVE MUST BE PRESENT.
 - THE PROPONENT WILL HYDRO-VAC AND/OR USE HAND TOOLS WHEN EXCAVATING 0.5M FROM THE OUTER EDGE OF MV UTILITIES.
 - IF AN EXISTING MV WATER MAIN IS EXPOSED, THE CONTRACTOR IS RESPONSIBLE TO RESTORE PIPE BEDDING AND BACKFILL TO MV STANDARDS (TO REINSTATE PIPE BEDDING WITH SAND COMPACTED TO 95% MODIFIED PROCTOR).
 - VERTICAL MINIMUM CLEARANCE TO MV FACILITIES IS 300mm AND HORIZONTAL MINIMUM CLEARANCE IS 1000mm (OUTER EDGE TO OUTER EDGE).
 - IF MV UTILITIES ARE TO BE EXPOSED; MAXIMUM UNSUPPORTED LENGTH MAIN MUST BE 2m OR LESS. IF UNSUPPORTED LENGTH EXCEEDS 2m, THE CONTRACTOR SHALL SUBMIT ENGINEERED TEMPORARY SUPPORT DETAIL FOR MV REVIEW.

- METRO VANCOUVER SEWER NOTES:**
- CONTRACTOR TO OBTAIN METRO VANCOUVER PROXIMAL WORKS PERMIT FOR WORKS IN CLOSE PROXIMITY TO EXISTING METRO VANCOUVER INFRASTRUCTURE.
 - CONTACT METRO VANCOUVER (XXXXXXXXX AT ###-###-####) AT LEAST 10 BUSINESS DAYS IN ADVANCE OF EXCAVATION TO ARRANGE FOR A MV REPRESENTATIVE TO BE PRESENT DURING CONSTRUCTION IN PROXIMITY TO THE MV SEWER.
 - THE CENTERLINE OF THE MV SANITARY SEWER MUST BE FIELD LOCATED BY HYDRO-VAC IN THE PRESENCE OF AN MV REPRESENTATIVE AND CLEARLY MARKED ON THE GROUND BEFORE STARTING ANY CONSTRUCTION IN PROXIMITY TO THE MV SEWER.
 - ALL GROUND DISTURBANCE WITHIN 0.5m OF THE MV SANITARY SEWER, HORIZONTALLY AND VERTICALLY, MUST BE CARRIED OUT BY HYDRO-VAC OR MANUAL MEANS.
 - ALL COMPACTION WORK WITHIN 1m HORIZONTAL AND VERTICAL DISTANCE FROM THE OUTSIDE EDGE OF THE MV SANITARY SEWER MUST BE CARRIED OUT BY LIGHT WEIGHT VIBRATORY PLATE TAMPER OR JUMPING JACK COMPACTOR AS APPROPRIATE. HOE-PACK EQUIPMENT IS NOT PERMITTED.
 - MINIMUM VERTICAL CLEARANCE TO MV FACILITIES IS 300mm AND MINIMUM HORIZONTAL CLEARANCE IS 1.2m (OUTER EDGE TO OUTER EDGE) UNLESS NOTED OTHERWISE.
 - IF THE EXISTING MV SANITARY SEWER IS EXPOSED, THE CONTRACTOR IS RESPONSIBLE TO RESTORE PIPE BEDDING AND BACKFILL TO MV STANDARDS. REINSTATE PIPE BEDDING WITH SAND COMPACTED TO 95% MODIFIED PROCTOR.
 - NO MATERIAL OR EQUIPMENT STORAGE OR HEAVY CONSTRUCTION ACTIVITY IS PERMITTED ABOVE THE MV SANITARY SEWER.



- NOTES:**
- ALL MATERIALS AND CONSTRUCTION SHALL CONFORM TO MMCD 2009 (PLATINUM) EDITION AND CITY OF COQUITLAM SUPPLEMENTARY SPECIFICATIONS.
 - PRIOR TO CONSTRUCTION, THE CONTRACTOR SHALL CONFIRM THE LOCATION AND ELEVATION OF ALL EXISTING UNDERGROUND UTILITIES. NOTIFY THE CONTRACT ADMINISTRATOR OF ANY DISCREPANCIES PRIOR TO THE COMMENCEMENT OF CONSTRUCTION.
 - THE CONTRACTOR SHALL RECORD COMPLETE AND ACCURATE AS-BUILT INFORMATION ON A SET OF CURRENT CONSTRUCTION DRAWINGS DURING CONSTRUCTION AND SUBMIT THE INFORMATION TO THE CONTRACT ADMINISTRATOR.
 - THE CONTRACTOR SHALL USE EXTREME CAUTION WHEN WORKING IN THE VICINITY OF A RETAINING WALL AND/OR ADJACENT STRUCTURE.
 - ALL EXISTING SURFACES SHALL BE RESTORED TO ORIGINAL OR BETTER CONDITION SUBSEQUENT TO CONSTRUCTION.
 - UNLESS OTHERWISE INDICATED, SANITARY SEWER MATERIALS SHALL BE:
 - MAINS = PVC DR 35
 - SERVICE CONNECTION:
 - 100mm DIA, 150mm DIA = PVC DR 28
 - 200mm DIA AND GREATER = PVC DR 35
 - MANHOLES CONCRETE = 1050mm DIA. PRECAST REINFORCED
 - MANHOLES SHALL BE INSTALLED AS PER MMCD STANDARD DRAWINGS S1 AND S2. BENCHING SHALL BE AS PER MMCD STANDARD DRAWING S3. MANHOLE FRAMES AND COVERS SHALL CONFORM TO CITY OF COQUITLAM STANDARD DRAWING COQ-S16.
 - FOR TYPICAL TRENCH SECTION SEE CITY OF COQUITLAM STD. DWG. COQ-G4.
 - EXISTING SANITARY SEWER AND MANHOLES TO BE REMOVED AS PART OF THE TRENCH EXCAVATION FOR NEW MAINS OR SERVICES, OR ABANDONED, SEALED AND FILLED AS PER THE FOLLOWING SPECIFICATIONS:
 - PIPES SHALL BE PLUGGED IN THE MANHOLE WITH CONCRETE FILLED SAND BAGS. PRIOR TO BURYING, FIELD INSPECTOR TO WITNESS THAT PIPES HAVE BEEN PLUGGED.
 - CAST IRON FRAMES AND COVERS, BRICKS AND/OR PRE-CAST CONCRETE RINGS, AND THE TOP OF THE MANHOLE STRUCTURE SHALL BE REMOVED AND THE MANHOLE CASTINGS SHALL BE DISPOSED OFF-SITE BY THE CONTRACTOR.
 - MANHOLE SECTIONS SHALL BE REMOVED TO MIN 1.2m BELOW GRADE.
 - MANHOLES SHALL BE FILLED WITH 19mm MINUS CRUSHED GRANULAR BASE AND COMPACTED IN 0.3m LIFTS TO 95% MODIFIED PROCTOR DENSITY.
 - ALL EXISTING UTILITY SERVICE CONNECTIONS NOT SHOWN FOR CLARITY.
 - THIS PLAN SHOWS HORIZONTAL GROUND LEVEL MEASURED DISTANCES. PRIOR TO COMPUTATION OF NAD83 U.T.M. COORDINATES MULTIPLY BY THE COMBINED FACTOR 0.9995887. DATE OF SURVEY COMPLETION IS DECEMBER 19, 2023
 - BASEMAP WAS IMPORTED FROM CITY OF COQUITLAM G.I.S. COORDINATE GEOMETRY. ACCURACY IS ESTIMATED AT ±0.10m.



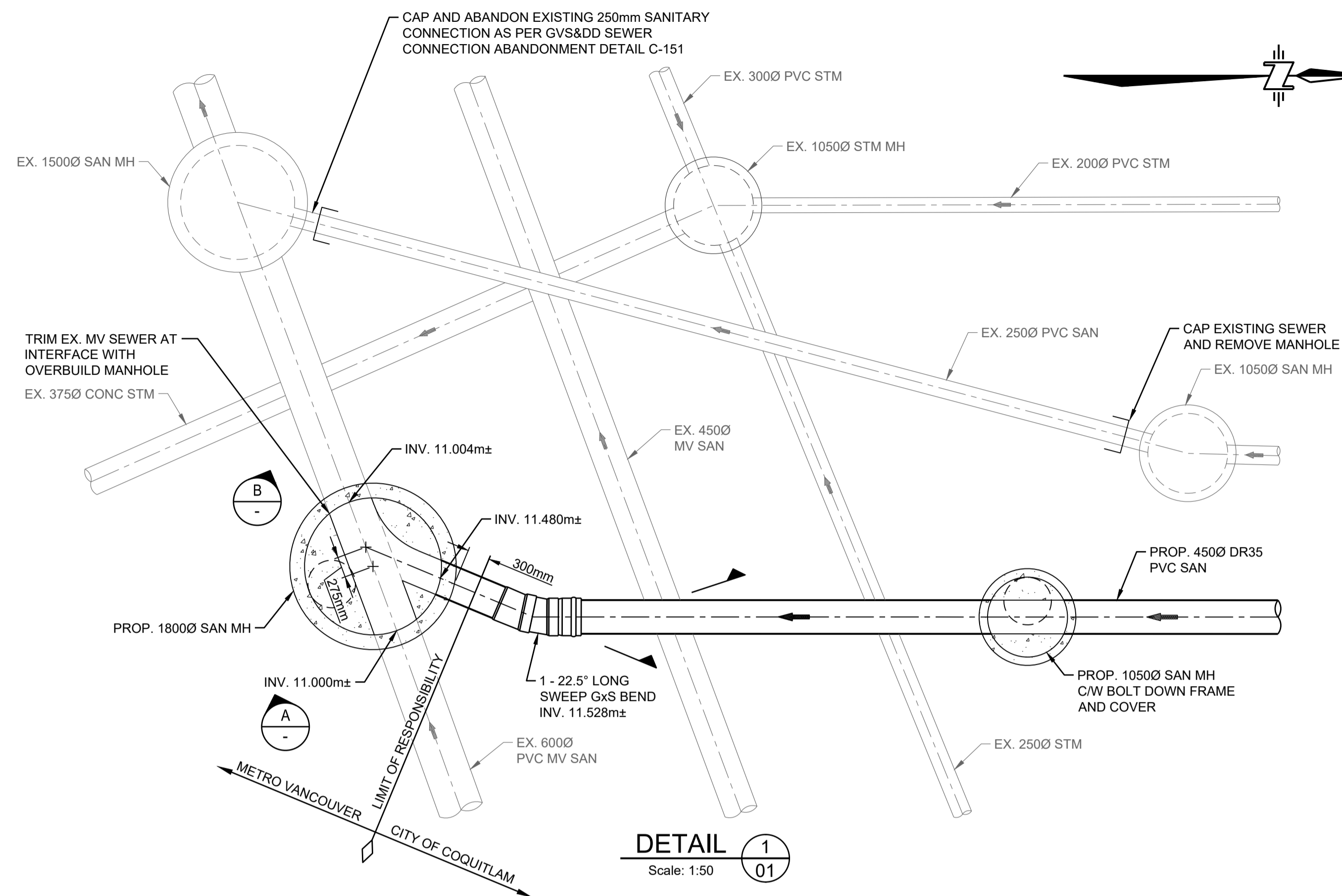
No.	Date	By	Revisions
6	2026-05-19	LY	ISSUED FOR TENDER
5	2026-05-13	LV	REISSUED FOR MV APPROVALS
4	2026-04-08	LV	ISSUED FOR MV APPROVALS
3	2026-03-06	LV	ISSUED FOR DISCUSSION WITH CITY
2	2025-09-24	LV	ISSUED FOR 90% DESIGN
1	2024-08-13	JD	ISSUED FOR 90% DESIGN

Design by	Date
JD	2026-04-08
Drawn by	Date
LV	2026-04-08
Checked by	Date
JD	2026-04-08
Approved by	Date
TDB	2026-04-08

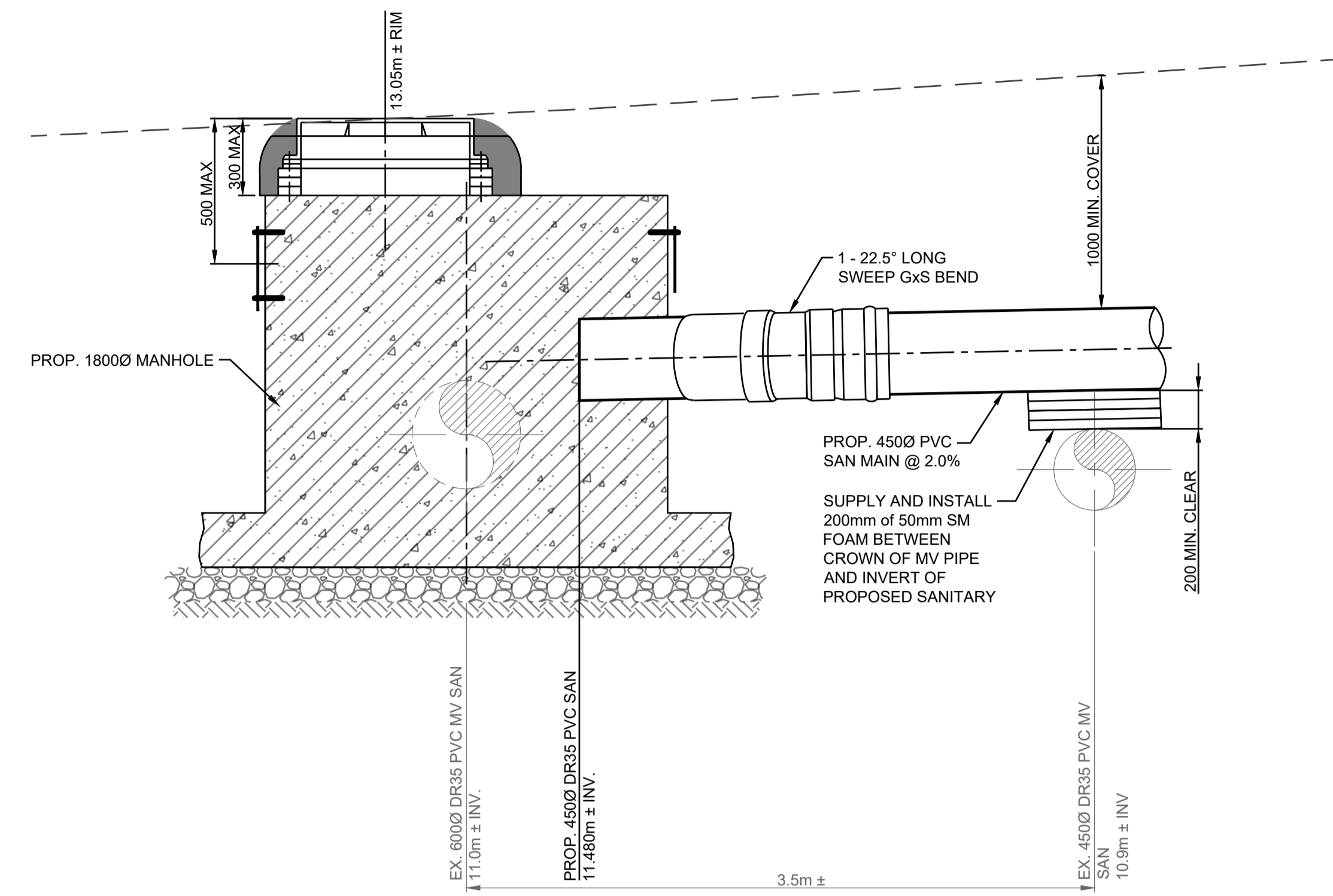


Scale	1:500	Scale	1:100
horiz.		vert.	
Sheet	01	of	03
Eng. Project No.	21-0989		

Project: **CASEY ST BRUNETTE AVE TO CARTIER AVE**
 Description: **SANITARY SEWER - PLAN & PROFILE**
 File: **21-0989-14-S1**
 REV. **6**

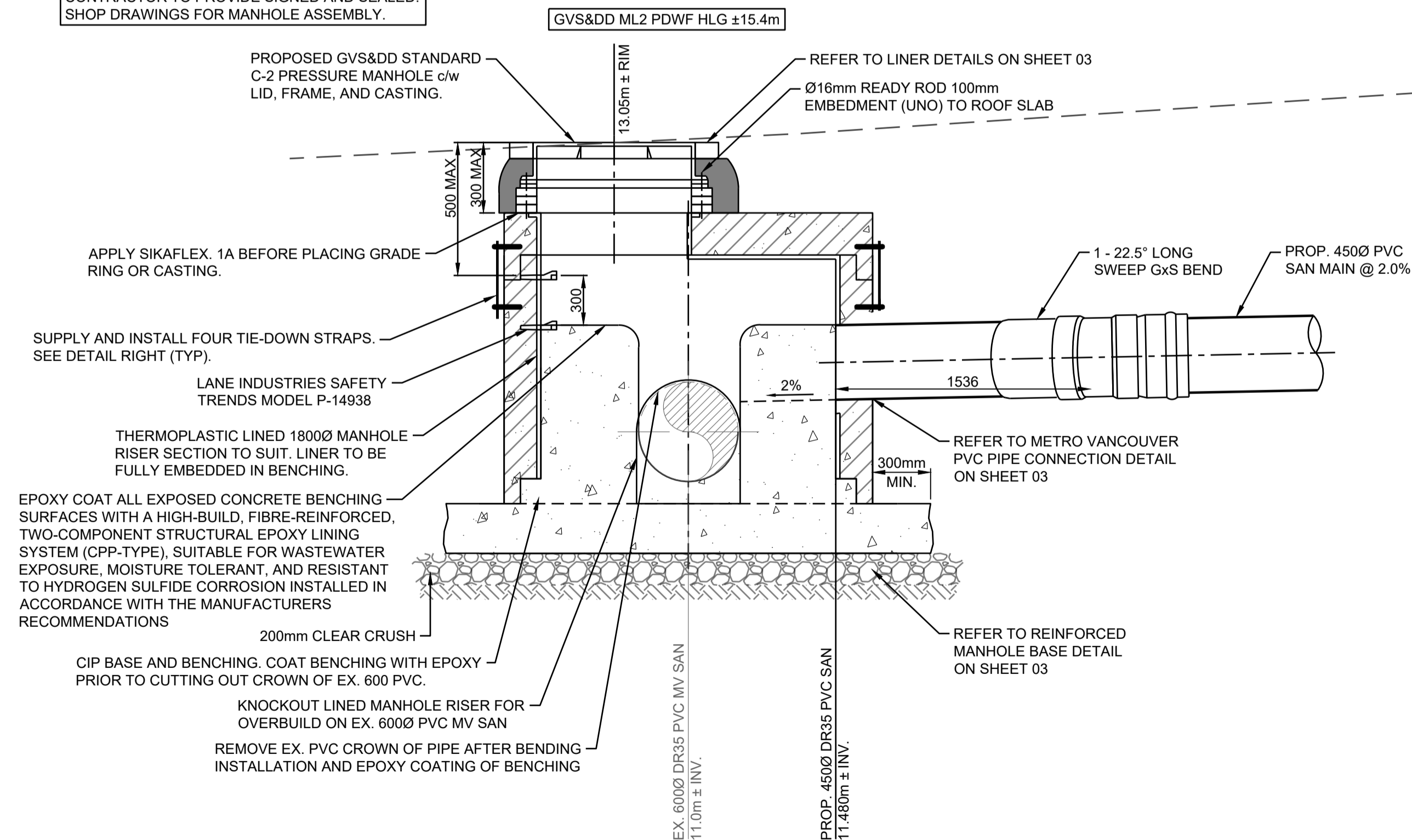


DETAIL 1
Scale: 1:50



OVERBUILD MANHOLE DETAIL
Scale: 1:25

CONTRACTOR TO PROVIDE SIGNED AND SEALED SHOP DRAWINGS FOR MANHOLE ASSEMBLY.



OVERBUILD MANHOLE DETAIL
Scale: 1:25

DISCLAIMER:
This drawing must not be reproduced without the written permission of R.F. Binnie & Associates Ltd.
This drawing is not to be used for construction unless it is stamped "ISSUED FOR CONSTRUCTION" and signed by R.F. Binnie & Associates Ltd. It is the contractor's responsibility to ensure that he is in possession of the latest revision of this drawing.

AS SHOWN

EGBC PERMIT No. 1001128

TENDER - NOT FOR CONSTRUCTION

Edge of pavement	Hydrant	Sanitary service	Hydro Guy Wire
Watermain and valve	Water air valve	Sanitary cleanout	Hydro Kiosk
Drainage sewer, MH	Water blowoff	Utility pole (joint pole)	Vegetation Canister
Drainage ditch	Water service	Utility pole with light	Vegetation Deciduous
Sanitary sewer, MH	Catch basin, top inlet	Streetlight, dim	Vegetation Shrub
Sanitary forcemain	Catch basin, side inlet	Streetlight, post top	Survey Traverse Hub
Gasmain and valve	Catch basin, round	Comb signal pole	Survey Iron Pin
Hydro duct, MH	Drainage service	Traffic signal pole	Survey Lead Plug
Telephone duct, MH	Drainage cleanout	Junction box	Survey Monument

No.	Date	By	Revisions
5	2026-05-19	LY	ISSUED FOR TENDER
4	2026-04-08	LV	ISSUED FOR MV APPROVALS
3	2026-03-06	LV	ISSUED FOR DISCUSSION WITH CITY
2	2025-09-24	LY	ISSUED FOR 90% DESIGN
1	2024-08-13	JD	ISSUED FOR 90% DESIGN

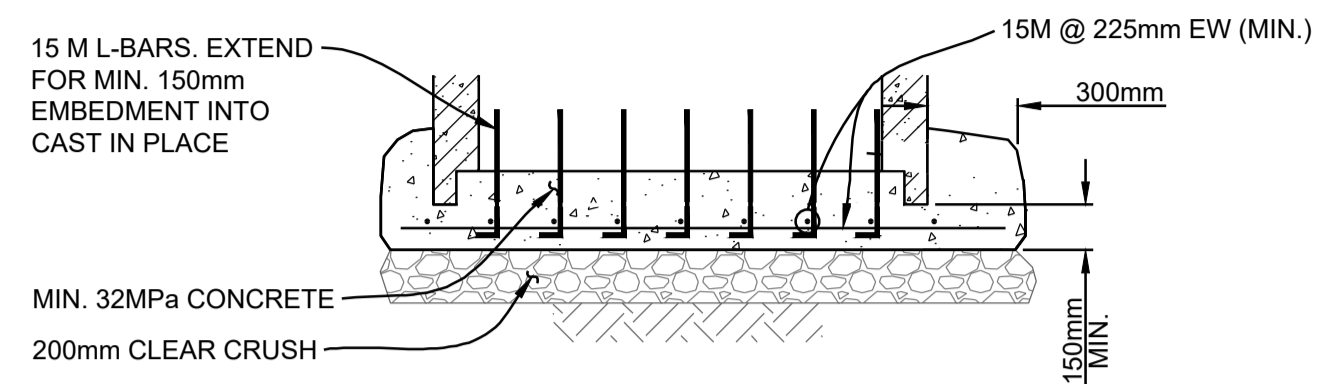
Design by	Date
JD	2026-04-08
Drawn by	Date
LV	2026-04-08
Checked by	Date
JD	2026-04-08
Approved by	Date
TDB	2026-04-08

BINNIE
The people behind your infrastructure.
TEL 604 420 1721 BINNIE.com

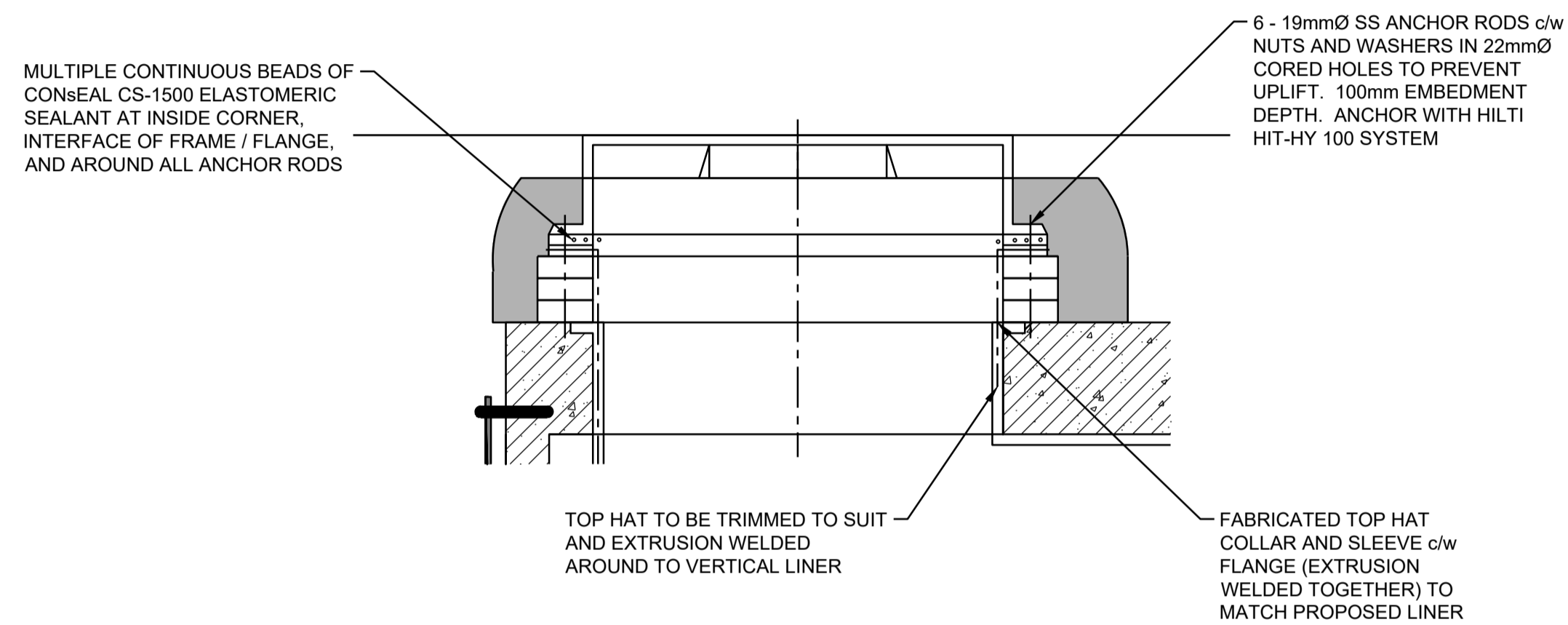
Coquitlam
Engineering & Public Works
3000 Guildford Way, Coquitlam, B.C. V3B 7N2

Scale	AS SHOWN	Scale	AS SHOWN
horiz.	02	vert.	03
Sheet	of 03		
Eng. Project No.	21-0989		

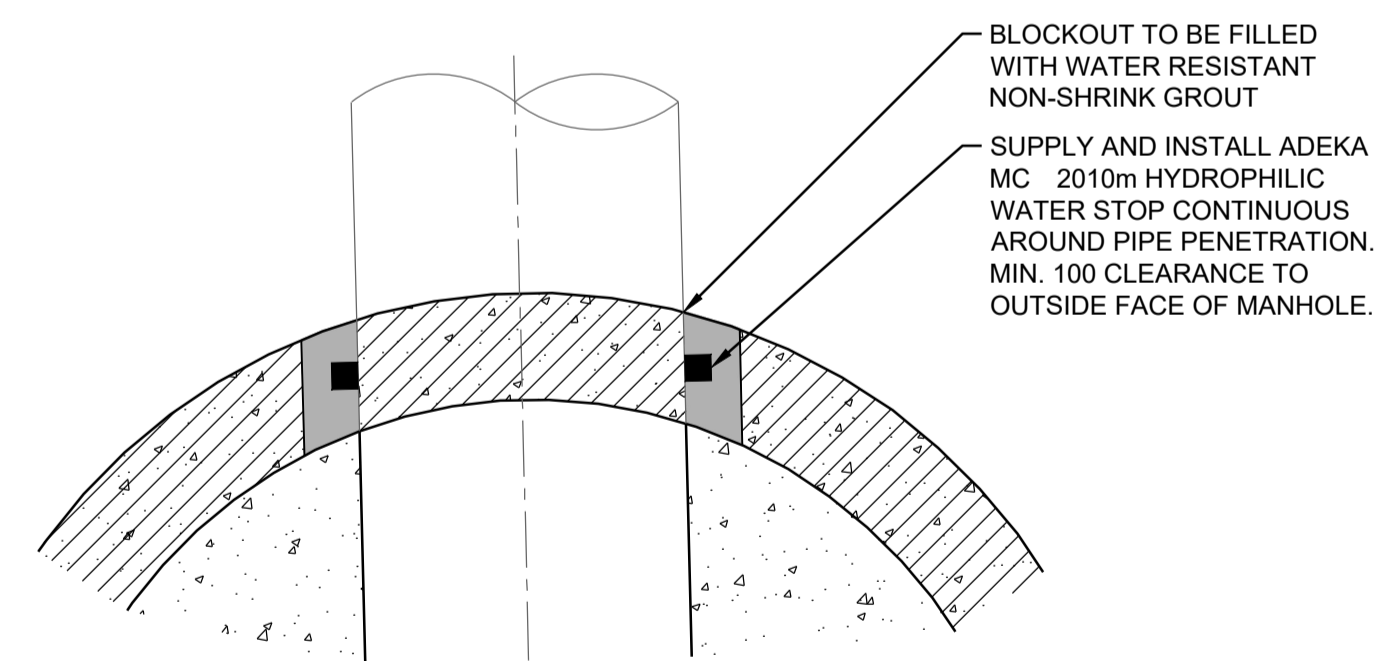
Project **CASEY ST
BRUNETTE AVE TO CARTIER AVE**
Description **SANITARY SEWER - DETAILS - SHEET 1 OF 2**
File: **21-0989-14-ND1**
REV. **5**



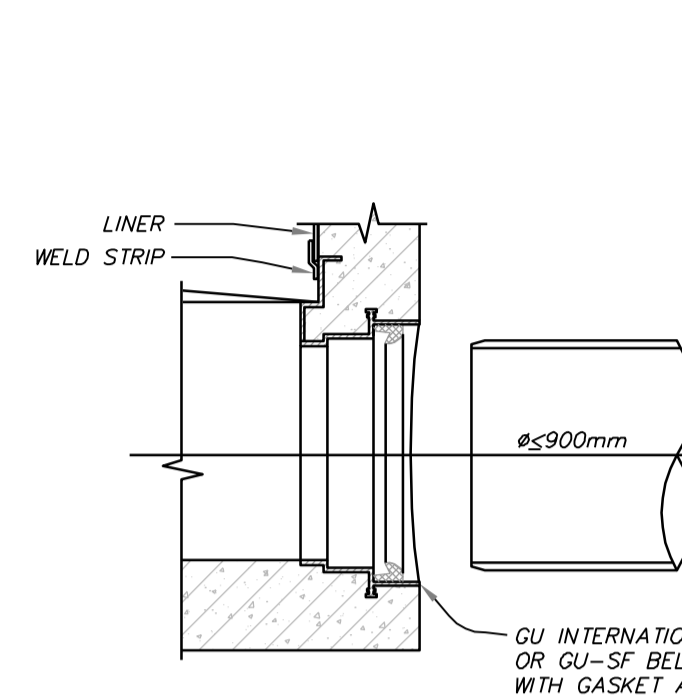
REINFORCED BASE MANHOLE DETAIL (C)
Scale: 1:25



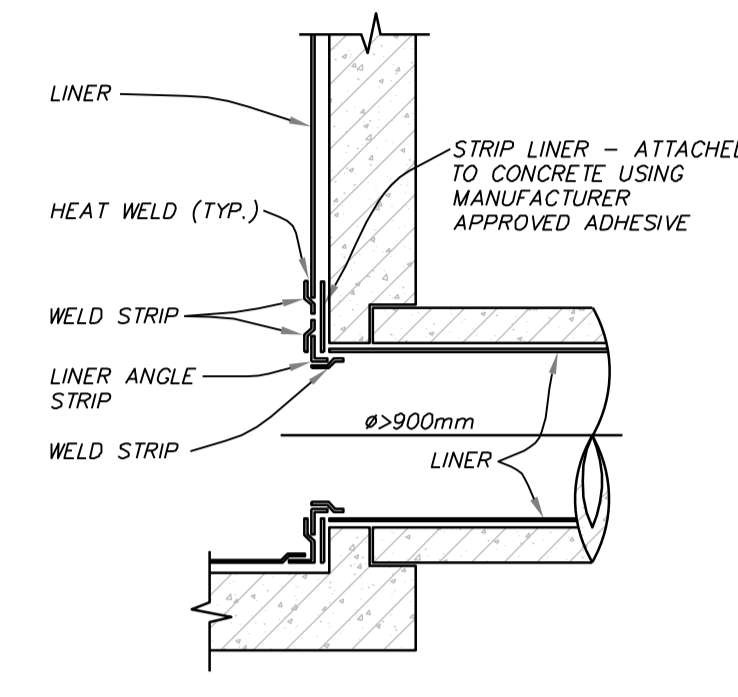
MANHOLE OPENING LINER DETAILS (D)
Scale: N.T.S.



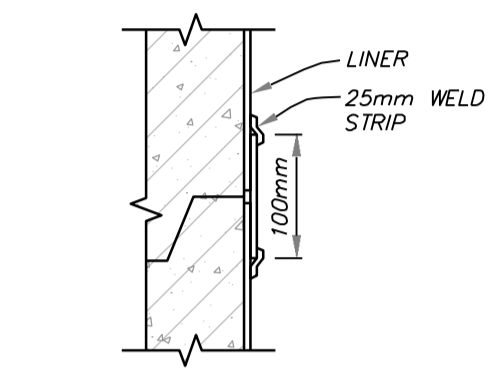
OVERBUILD MANHOLE PENETRATION DETAIL (E)
Scale: N.T.S.



PVC PIPE CONNECTION DETAIL
1:10



CONCRETE PIPE CONNECTION DETAIL
1:10



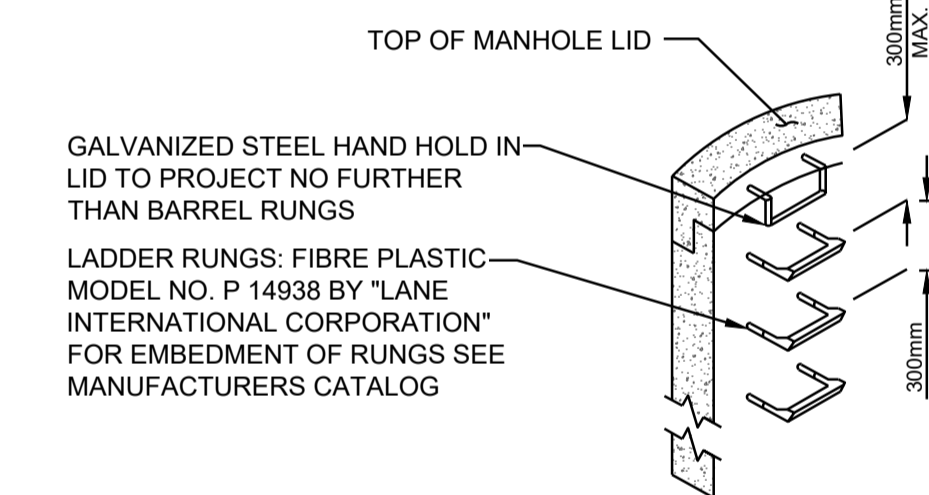
PLASTIC LINER WELDING DETAIL
1:5

FOR LAYOUT AND GENERAL ARRANGEMENT ONLY

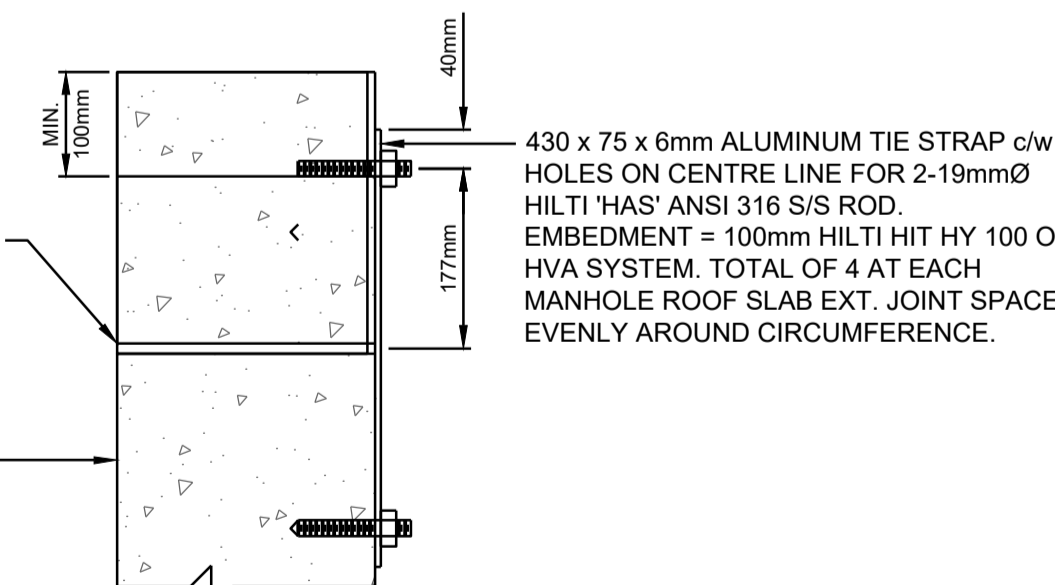
Design: T.B. ENGINEERING STANDARDS SCALE: AS NOTED Drawn: B.L. CIVIL CR-02-02-SD-CIV-00111 Checked:		District File S-301 Drawing Number C-101 Drawing Name SANITARY SEWER MANHOLE DETAILS CONNECTION AND LINER DETAILS
B 12/13/06 P.W. S.S. ISSUED FOR PUBLICATION A 07/26/09 P.W. E.S. ISSUED FOR APPROVAL Issue Date Description	Approved:	SUPERSEDES PRINTS OF THIS DOCUMENT CODE WITH LETTERS PREVIOUS TO []

Professional Seal

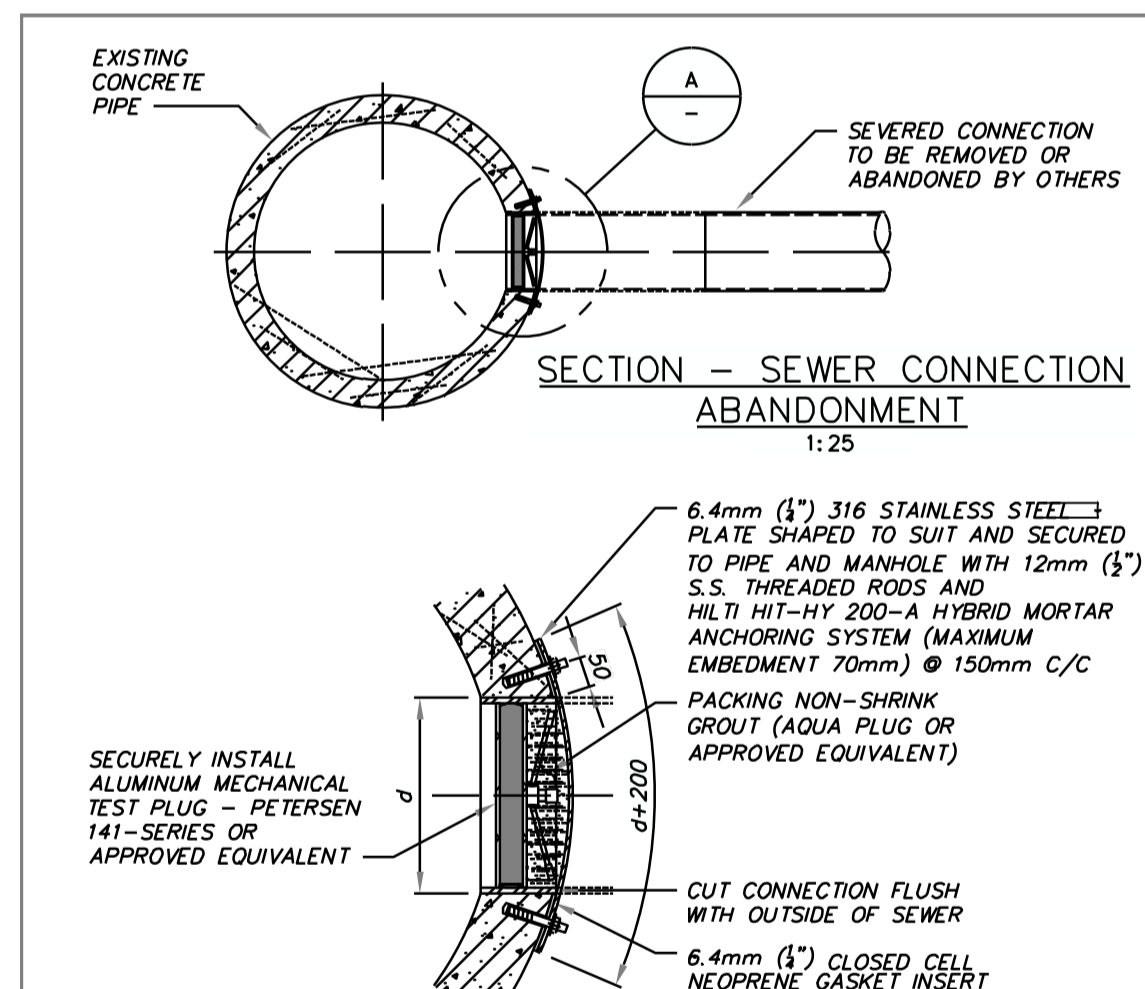
2027-10-29 10:48 T:\GDS\Casey\checked out files\CV155201.dwg



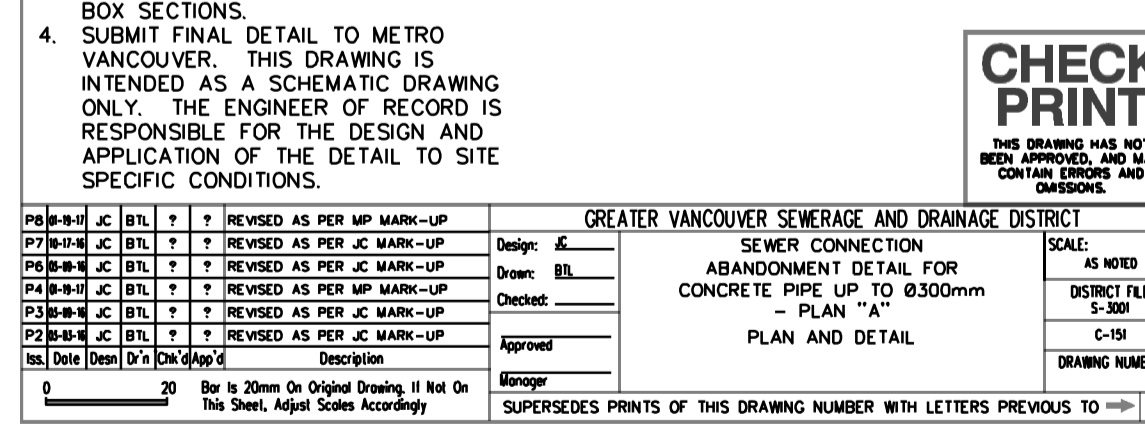
LADDER RUNGS DETAIL
N.T.S.



MANHOLE RISER TIE DOWN STRAP
N.T.S.



SECTION - SEWER CONNECTION ABANDONMENT
1:25



DETAIL (A)
1:10

- NOTES:
1. DETAIL APPLIES TO EXISTING DIRECT OR MUNICIPAL CONNECTIONS WHICH ARE TO BE ABANDONED OR REPLACED.
 2. CAN BE INSTALLED IN WET OR DRY.
 3. SIMILAR DETAIL APPLIES TO CONCRETE BOX SECTIONS.
 4. SUBMIT FINAL DETAIL TO METRO VANCOUVER. THIS DRAWING IS INTENDED AS A SCHEMATIC DRAWING ONLY. THE ENGINEER OF RECORD IS RESPONSIBLE FOR THE DESIGN AND APPLICATION OF THE DETAIL TO SITE SPECIFIC CONDITIONS.

CHECK PRINT
THIS DRAWING HAS NOT BEEN APPROVED AND MAY CONTAIN ERRORS AND OMISSIONS.

Design: T.B. Drawn: B.L. Checked:	District File S-301 Drawing Number C-101 Drawing Name SANITARY SEWER MANHOLE DETAILS CONNECTION AND LINER DETAILS
B 12/13/06 P.W. S.S. ISSUED FOR PUBLICATION A 07/26/09 P.W. E.S. ISSUED FOR APPROVAL Issue Date Description	Approved:

20 SUPERSEDES PRINTS OF THIS DRAWING NUMBER WITH LETTERS PREVIOUS TO []
 20 Bar is 20mm On Original Drawing. If Not On This Sheet, Adjust Scales Accordingly.

AS SHOWN
 DISCLAIMER: This drawing must not be reproduced without the written permission of R.F. Binnie & Associates Ltd. This drawing is not to be used for construction unless it is stamped "ISSUED FOR CONSTRUCTION" and signed by R.F. Binnie & Associates Ltd. It is the contractor's responsibility to ensure that he is in possession of the latest revision of this drawing.

Edge of pavement Watermain and valve Drainage sewer, MH Drainage ditch Sanitary sewer, MH Sanitary forcemain Gasmain and valve Hydro duct, MH Telephone duct, MH	Hydrant Water air valve Water blowoff Utility pole with light Streetlight, down Catch basin, top inlet Catch basin, side inlet Catch basin, round Drainage service Drainage cleanout	Sanitary service Sanitary cleanout Utility pole (joint pole) Utility pole with light Streetlight, down Streetlight, post top Comb signal pole Traffic signal pole Junction box	Hydro Guy Wire Hydro Kiosk Vegetation Canister Vegetation Deciduous Vegetation Shrub Survey Traverse Hub Survey Iron Pin Survey Lead Plug Survey Monument
--	---	--	---

No.	Date	By	Revisions
5	2026-05-19	LY	ISSUED FOR TENDER

Design by	Date
TDB	
Drawn by	Date
LY	
Checked by	Date
TDB	
Approved by	Date
TDB	

BINNIE
 The people behind your infrastructure.
 TEL 604 420 1721 BINNIE.com

Coquitlam
 Engineering & Public Works
 3000 Guildford Way, Coquitlam, B.C. V3B 7N2

Scale AS SHOWN	Scale AS SHOWN
horiz.	vert.
Sheet 03	of 03
Eng. Project No. 21-0989	

Project **CASEY ST BRUNETTE AVE TO CARTIER AVE**
 Description **SANITARY SEWER - DETAILS - SHEET 2 OF 2**
 File: **21-0989-14-ND2**
 REV. 1

EGBC PERMIT No. 1001128

TENDER - NOT FOR CONSTRUCTION