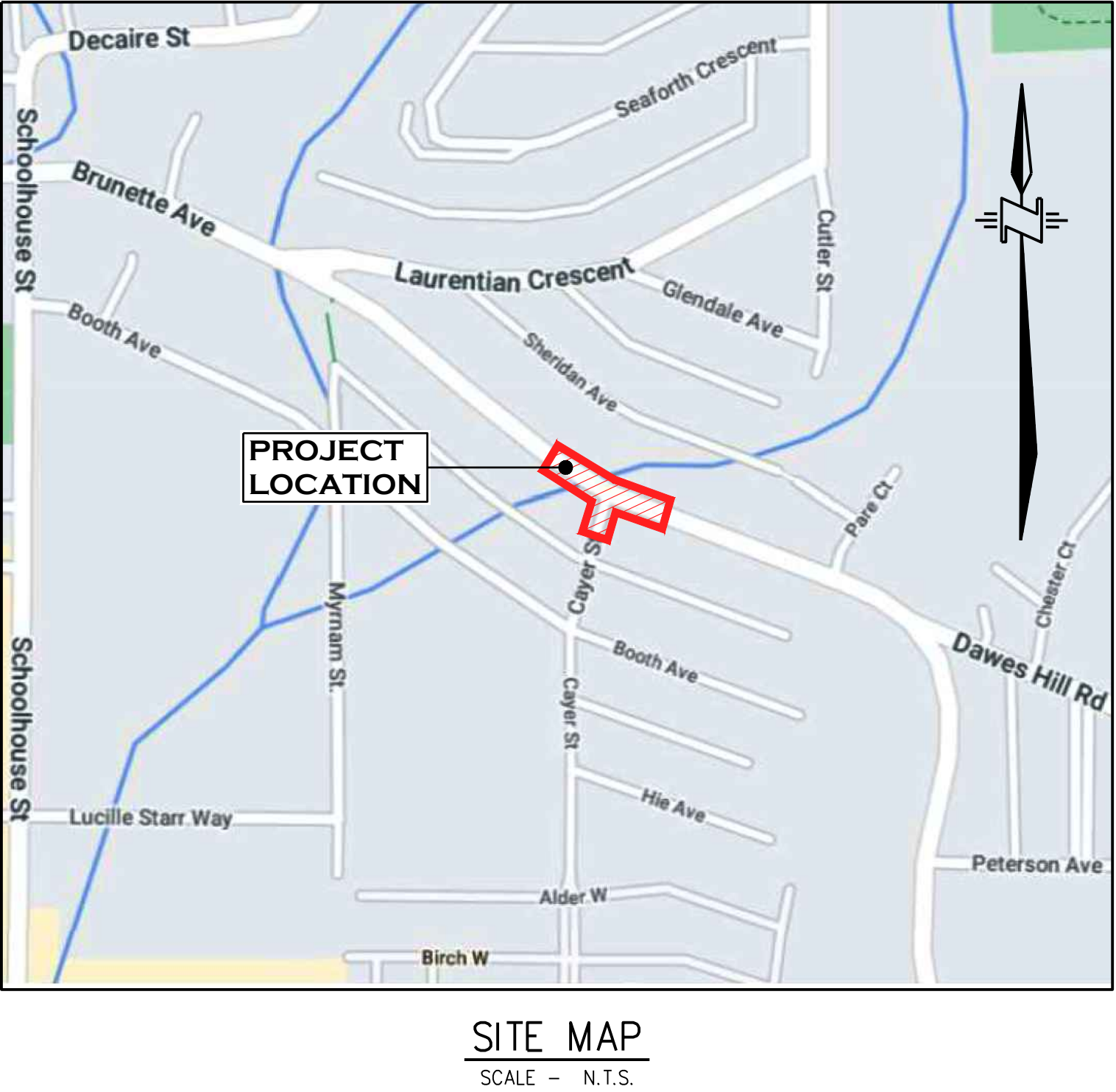


CITY OF COQUITLAM
3000 GUILDFORD WAY, COQUITLAM, BC V3B 7N2

CAYER ST AND BRUNETTE AVE ACCESSIBILITY IMPROVEMENTS

ISSUED FOR TENDER

LEGEND		
EXISTING	PROPOSED	DESCRIPTION
		IRON PROPERTY PIN
		BUILDING
		EDGE OF PAVEMENT
		CURB & GUTTER
		TRUCK ROUTE
		SANITARY SEWER
		SANITARY CONNECTION & INSPECTION CHAMBER
		STORM SEWER
		STORM CONNECTION & INSPECTION CHAMBER
		STORM SEWER SERVICE
		FRENCH DRAIN
		STORM SEWER & CLEANOUT
		CATCH BASIN - TOP INLET & SIDE INLET
		LAWN DRAIN
		CATCH BASIN MANHOLE
		SWALE
		DITCH
		SIDEWALK (ASPHALT)
		SIDEWALK (CONCRETE)
		RETAINING WALL
		WATERMAIN
		WATER SERVICE CONNECTION
		WATER VALVE
		AIR VALVE
		HYDRANT & VALVE ASSEMBLY
		YARD HYDRANT
		CAPPED END
		WATER METER
		BLOW-OFF
		UNDERGROUND TELEPHONE & MANHOLE
		UNDERGROUND ELECTRICAL & MANHOLE
		GASMAIN
		TRAFFIC SIGNAL & STREET LIGHT U/G DUCTS
		ORNAMENTAL STREET LIGHT - DAVIT
		ORNAMENTAL STREET LIGHT - POST TOP
		UTILITY POLE
		UTILITY POLE W/ LIGHT
		JUNCTION BOX
		GROUND ELEVATION
		DIRECTION OF OVERLAND FLOW



DRAWING INDEX				
SHEET #	DWG. TYPE	STREET	LIMITS	RFB DWG. #
00	COVER SHEET			
01	GENERAL NOTES	BRUNETTE AVE AND CAYER ST		20-1027-6-R1
02	ROADWORKS - PLAN AND PROFILE	BRUNETTE AVE	AT CAYER ST	20-1027-6-R2
1 OF 1	RRFB - SITE PLAN AND DETAILS	BRUNETTE AVE AT CAYER ST		



R.F. BINNIE & ASSOCIATES LTD.
300 - 4940 Canada Way,
Burnaby, BC V5G 4K6
TEL 604 420 1721
BINNIE.com

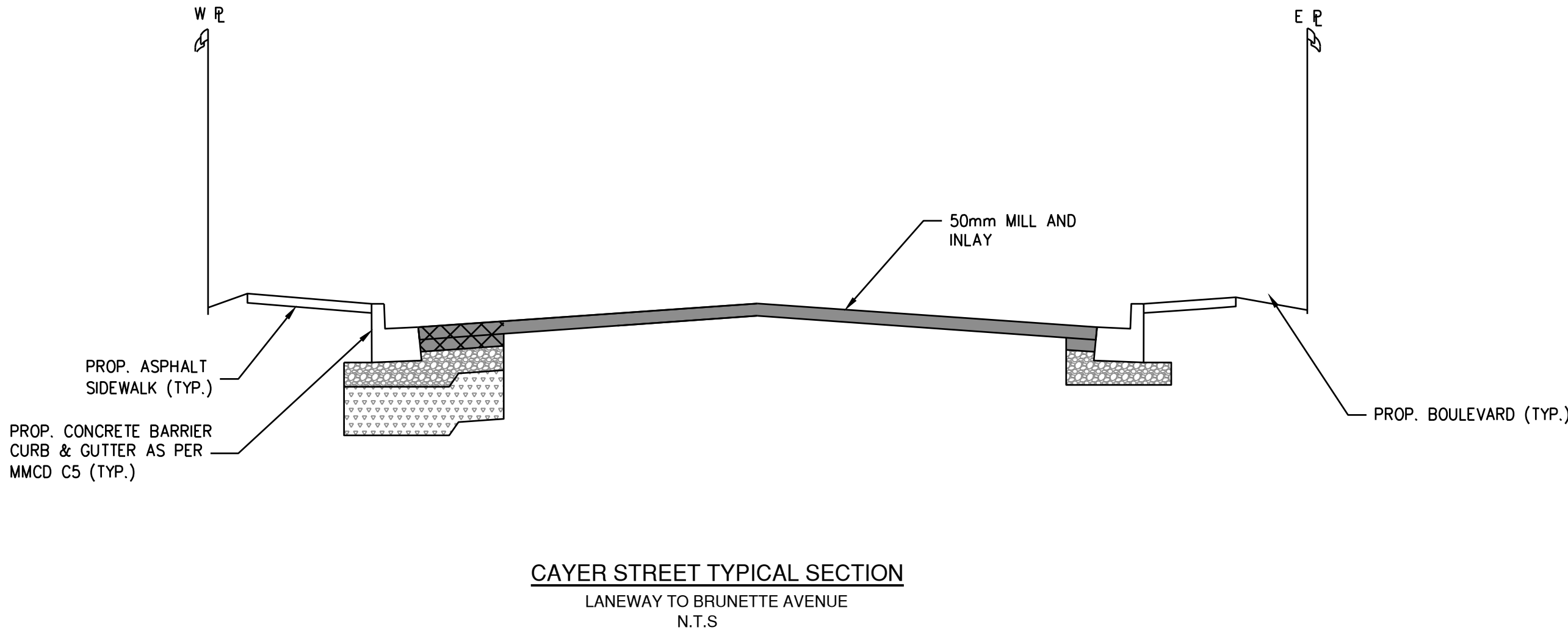
GENERAL CONSTRUCTION NOTES

- ALL MATERIALS SUPPLIED AND CONSTRUCTION PERFORMED SHALL BE IN ACCORDANCE WITH THE CITY OF COQUITLAM SUBDIVISION AND DEVELOPMENT SERVICING BYLAW No. 3559, THE 2009 MMCD PLATINUM BOOK, AND THE CURRENT COQUITLAM SUPPLEMENTARY SPECIFICATIONS AND DETAILED DRAWINGS.
- REMOVE AND DISPOSE OF EX AC PIPE IN ACCORDANCE WITH WORKSAFE BC AND OTHER PERTINENT REGULATIONS.
- ALL EXCAVATION WITHIN EXISTING TREE DRIPLINES TO BE BY HAND OR HYDRO-VAC.
- CONTRACTOR SHALL RECORD COMPLETE AND ACCURATE AS-BUILT INFORMATION ON A SET OF CURRENT CONSTRUCTION DRAWINGS DURING CONSTRUCTION AND SUBMIT THE INFORMATION TO THE CONTRACT ADMINISTRATOR (CA). AS-BUILT INFORMATION SHALL INCLUDE:
 - LIMITS OF PAVEMENT REPAIRS
 - PIPE INVERTS
 - PIPE GRADES
 - VALVE AND FITTING LOCATIONS
 - SERVICE WYE LOCATIONS
 - CONNECTIONS
 - BENDS
 - MANHOLES
 - SERVICE ELEVATIONS @ IC'S
 - PROPERTY LINE OFFSETS
- THE LOCATIONS OF THE EXISTING UTILITIES, AS SHOWN ON THE DESIGN DRAWINGS, ARE APPROXIMATE ONLY AND THIS INFORMATION MAY NOT BE FULLY ACCURATE OR COMPLETE. PRIOR TO THE START OF CONSTRUCTION, THE CONTRACTOR SHALL LOCATE AND EXPOSE ALL EXISTING UTILITIES AT ALL TIE-IN POINTS, AT ALL POINTS WHERE A CONFLICT MAY ARISE DURING THE CONSTRUCTION OF THE PROPOSED WORKS, AND TO CONFIRM DESIGN ELEVATIONS. IN THE EVENT OF A CONFLICT, THE CONTRACTOR SHALL IMMEDIATELY NOTIFY THE CONTRACT ADMINISTRATOR.
- EXISTING UNDERGROUND UTILITY TRENCHES ADJACENT TO THE PROPOSED UNDERGROUND UTILITY INSTALLATION SHALL BE ADEQUATELY PROTECTED FROM SLOUGHING IN ORDER TO PREVENT OVER-WIDTH EXCAVATION.
- ALL SURVEY MONUMENTS, BENCHMARKS, AND LEGAL PINS MUST BE PROTECTED AND ANY DAMAGE CAUSED BY THE CONTRACTOR SHALL BE REPAIRED AT THE CONTRACTOR'S EXPENSE.

CONTRACTOR TO IDENTIFY ANY SURVEY MONUMENTS AND LEAD PLUGS THAT MAY BE DISTURBED DURING CONSTRUCTION AND ARRANGE WITH THE OWNER'S SURVEY DEPARTMENT 5 DAYS PRIOR TO CONSTRUCTION TO REFERENCE LOCATIONS BEFORE WORK COMMENCES.
- THE CONSULTANT WILL PROVIDE THE CONTRACTOR WITH HORIZONTAL AND VERTICAL SURVEY CONTROLS. THE CONTRACTOR SHALL GIVE NOTICE OF HIS SURVEY REQUIREMENTS AT LEAST TWO WORKING DAYS IN ADVANCE OF THE WORK AND SHALL PROTECT AND MAINTAIN THE CONTROLS PROVIDED. THE CONTRACTOR SHALL ENSURE THAT THE AREAS RECEIVING THE CONTROLS ARE UNOBSTRUCTED AND CLEAR OF DEBRIS, EQUIPMENT, EXCAVATIONS AND ANY OTHER WORK PRIOR TO REQUESTING THE CONTROLS. RE-ESTABLISHMENT OF CONTROLS, SURVEY POSTS AND BENCHMARKS WHICH ARE DAMAGED OR LOST SHALL BE AT THE CONTRACTOR'S EXPENSE.

ROADWORKS NOTES

- CONTRACTOR TO ADJUST ALL CATCH BASINS, MANHOLES, VALVE COVERS, AND ALL OTHER APPURTENANCES TO SUIT FINISHED GRADES.
- CONTRACTOR TO REMOVE AND REPLACE INDIVIDUAL DAMAGED SIDEWALK PANELS AND DAMAGED CURB AND GUTTER SECTIONS AS DIRECTED BY THE CONTRACT ADMINISTRATOR.
- ALL PAVEMENT MARKINGS TO BE REINSTATED IN THE PLACE OF WORK UNLESS NOTED OTHERWISE. CONTRACTOR IS RESPONSIBLE TO PERFORM PRE AND POST CONSTRUCTION SURVEY WORK FOR THE REINSTATEMENT OF PAVEMENT MARKINGS.
- LOCATIONS OF DRIVEWAYS AND WHEELCHAIR RAMPS SHALL BE CONFIRMED IN THE FIELD PRIOR TO CONSTRUCTION OF CURB AND GUTTER.
- CHANGES IN GRADE SHALL BE FORMED WITH SMOOTH CURVES.
- CATCH BASIN RIM ELEVATIONS SHALL BE SET 30mm BELOW THE FINISHED GUTTER LINE GRADES. THE GUTTER AND ROAD SURFACE AREA TO BE SHAPED TO FORM A DISH AROUND THE INLET.
- ALL ASPHALT JOINTS MUST BE SMOOTH AND WITHOUT VISIBLE BREAKS IN THE GRADE. THOROUGHLY COMPACTED NEAT JOINTS ARE REQUIRED. CONTRACTOR TO SUBMIT DENSITY TESTS TAKEN ON JOINTS. NO INDIVIDUAL TESTS SHALL BE LESS THAN 95% OF 75 BLOW MARSHALL DENSITY.
- RAISED PAVEMENT MARKERS (RPMs) TO BE INSTALLED BY OTHERS.

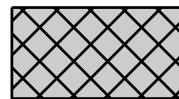


MARINER WAY TREATMENT:



50mm MILL & INLAY (WHERE SHADED IN PLAN VIEW):

- MILL TREATMENT AREA TO 50mm DEPTH BELOW DESIGN FINISH GRADE.
- CLEAN AND TACK COAT ALL ASPHALT SURFACES INCLUDING JOINTS.
- PLACE (WITH PAVER) NEW HOT MIX ASPHALT MMCD, UPPER COURSE #1 TO 50mm THICKNESS IN 1 LIFT, AND COMPACT TO 97% OF 75 BLOW MARSHALL. THE FINAL ASPHALT LIFT MUST HAVE ONLY ONE JOINT LOCATED UNDER THE ROAD CENTERLINE.



FULL DEPTH STRUCTURE (WHERE HATCHED IN PLAN VIEW):

- FULL EXCAVATION TO (MINIMUM 400mm BELOW DESIGN FINISH GRADE). FINAL LIMITS OF FULL DEPTH TREATMENT TO BE DETERMINED BY C.A.
- PROOF ROLL AND OVER-EXCAVATE WHERE REQUIRED, AS DIRECTED BY C.A.
- PLACE 200mm OF 75MM MINUS GRANULAR SUBBASE MATERIAL, AND COMPACT TO NO LESS THAN 95% MPMD. (PROVISIONAL)
- PLACE 100mm OF 19MM MINUS GRANULAR BASE MATERIAL TO ACHIEVE CROSS SLOPES, AND COMPACT TO NO LESS THAN 95% MPMD. (PROVISIONAL)
- PLACE (WITH PAVER) NEW HOT MIX ASPHALT (MMCD LOWER COURSE #1) TO 50mm THICKNESS, AND COMPACT TO 97% OF 75 BLOW MARSHALL.
- CLEAN AND TACK COAT ALL ASPHALT SURFACES INCLUDING JOINTS.
- PLACE (WITH PAVER) NEW HOT MIX ASPHALT (MMCD UPPER COURSE #1) TO 50mm THICKNESS, AND COMPACT TO 97% OF 75 BLOW MARSHALL. THE FINAL ASPHALT LIFT MUST HAVE ONLY ONE JOINT LOCATED UNDER THE ROAD CENTERLINE.
- THE BOTTOM LIFT OF ASPHALT SHALL BE PAVED SUCH THAT ITS CONSTRUCTION JOINT IS OFFSET 300mm FROM THE TOP LIFT ASPHALT PAVING JOINTS.
- TOP LIFT ASPHALT PAVING LONGITUDINAL JOINTS TO BE LOCATED UNDER THE DOUBLE YELLOW LINE MARKINGS.
- CONTRACTOR TO USE PROPER PAVING TECHNIQUE, MAT OVERLAY OR ECHELON PAVING
- SEAL ALL CONSTRUCTION JOINTS FOLLOWING THE COMPLETION OF PAVING, AND PRIOR TO INSTALLATION OF THERMOPLASTIC PAINT.

NOT TO SCALE

DISCLAIMER:
This drawing must not be reproduced without the written permission of R.F. Binnie & Associates Ltd.
This drawing is not to be used for construction unless it is stamped "ISSUED FOR CONSTRUCTION" and signed by R.F. Binnie & Associates Ltd. It is the contractor's responsibility to ensure that he is in possession of the latest revision of this drawing.

ISSUED FOR TENDER

Edge of pavement	Hydrant	Sanitary service	Hydro Guy Wire
Watermain and valve	Water air valve	Sanitary cleanout	Hydro Kiosk
Drainage sewer, MH	Water blowoff	Utility pole(joint pole)	Vegetation Canifer
Drainage ditch	Water service	Utility pole with light	Vegetation Deciduous
Sanitary sewer, MH	Catch basin, top inlet	Streetlight, davit	Vegetation Shrub
Sanitary forcemain	Catch basin, side inlet	Streetlight, post top	Survey Traverse Hub
Gasmain and valve	Drainage service	Comb signal pole	Survey Iron Pin
Hydro duct, MH	Drainage cleanout	Traffic signal pole	Survey Lead Plug
Telephone duct, MH		Junction box	Survey Monument

No.	Date	By	Revisions

Design by	Date
KD	
Drawn by	Date
LY	
Checked by	Date
VL	
Approved by	Date
TDB	

BINNIE
The people behind your infrastructure.
TEL 604 420 1721 **BINNIE.com**

Coquitlam
Engineering & Public Works
3000 Guildford Way, Coquitlam, B.C. V3B 7N2

Scale
horiz. **N.T.S.** Scale
vert. **N.T.S.**
Sheet **01** of **02**
Eng. Project No. **20-1027**

Project **BRUNETTE AVE AND CAYER ST**
Description **GENERAL NOTES**
File: 20-1027-6-R1
REV. **3**

1. PROOF ROLL BASE, ADD GRAVELS AS REQUIRED, RECOMPACT, AND RESHAPE AS REQUIRED PRIOR TO PAVING.
2. CLEAN AND TACK-COAT ALL ASPHALT SURFACES INCLUDING JOINTS PRIOR TO PAVING.
3. COMPACTION FOR GRAVELS 95% M.P.D., FOR MARSHALL MIX 97% (TYP.)
4. OVER-EXCAVATE (OPTIONAL):
WHERE DIRECTED BY THE CA, EXCAVATE UNSUITABLE MATERIAL AND REPLACE WITH IMPORTED BASE GRAVEL COMPACTED IN PLACE.
5. CONTRACTOR TO REPLACE ALL MANHOLE FRAMES AND LIDS; WATER VALVE BOXES AND COVERS WITHIN THE ROADWAY.
6. THE ADJUSTMENT OF MANHOLES, VALVE COVERS, AND ALL OTHER APPURTENANCES TO SUIT NEW ASPHALT GRADES IS INCIDENTAL TO ASPHALT PAVING UNLESS SPECIFIED OTHERWISE IN THE SCHEDULE OF QUANTITIES. (TYP.)
7. ALL PAVEMENT MARKINGS TO BE REINSTATED IN THE PLACE OF WORK. CONTRACTOR RESPONSIBLE TO PERFORM PRE AND POST CONSTRUCTION SURVEY WORK ESSENTIAL FOR THE REINSTATEMENT OF PAVEMENT MARKINGS.
8. CONTRACTOR TO IDENTIFY ANY SURVEY MONUMENTS AND LEAD PLUGS THAT MAY BE DISTURBED DURING CONSTRUCTION AND ARRANGE WITH THE OWNER'S SURVEY DEPARTMENT 5 DAYS PRIOR TO CONSTRUCTION TO REFERENCE LOCATIONS BEFORE WORK COMMENCES.
9. CATCH BASINS RIM ELEVATIONS TO BE SET 30mm BELOW THE FINISHED GUTTERLINE GRADES. GUTTER AND ROAD SURFACE AREA TO BE SHAPED TO FORM A DISH AROUND THE INLET.
10. FINAL LAYOUT OF LETDOWN AND TACTILE TO BE APPROVED BY CA. ADJUSTMENTS TO BE MADE ON SITE (TYP.)
11. SIDEWALK PANELS TO BE THICKEN TO 190mm ON ALL LETDOWN CROSSINGS, UP TO ONE PANEL PAST THE CURB RAMP (TYP.)

TREATMENT - MILLED OVERLAY

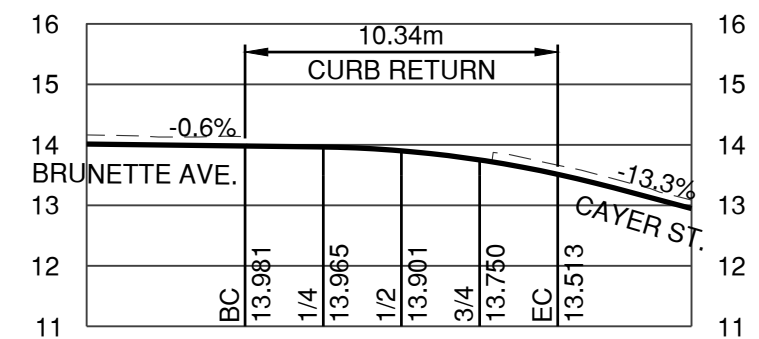
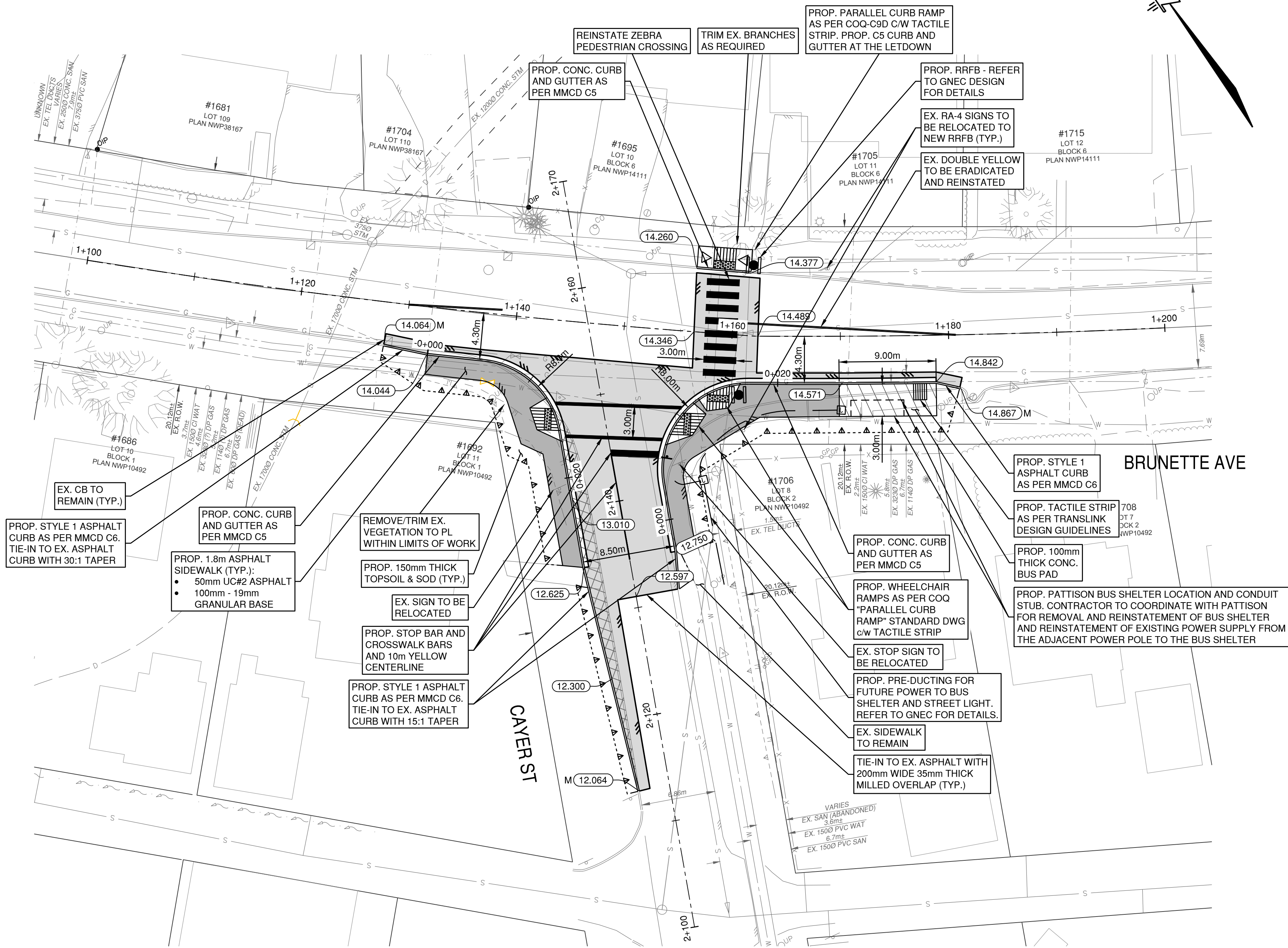
MILL 50mm OF EX. ASPHALT AND ADD 50mm OF MMCD UPPER COURSE #1 ASPHALT

ROAD WIDENING (FULL DEPTH STRUCTURE)

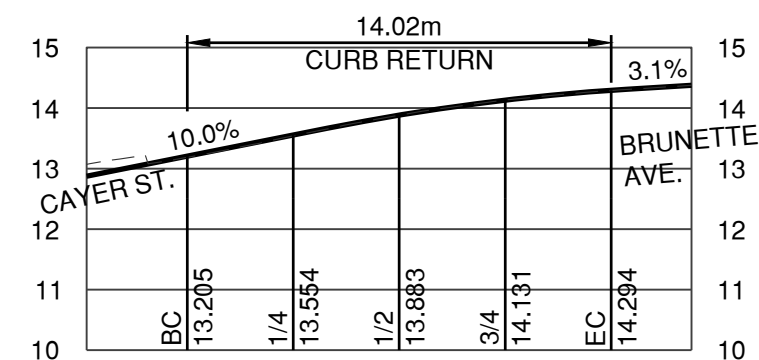
- 50mm MMCD UPPER COURSE #1 ASPHALT
- 50mm MMCD LOWER COURSE #1 ASPHALT
- 100mm-19mm MINUS GRANULAR BASE (PROVISIONAL)
- 200mm-75mm MINUS GRANULAR SUBBASE ON APPROVED FILL MATERIAL AND SUBBASE. (PROVISIONAL)

REFER TO 20-1027-6-R1 DWG FOR GENERAL CONSTRUCTION, AND ROADWORKS NOTES.

BENCHMARK:
SURVEY CONTROL MONUMENT 73H0124
LOCATED AT JUNCTION OF BRUNETTE AVE & CAYER ST
ELEVATION = 13.945 M CVD28GVRD2018



BRUNETTE AVE.
CURB RETURN – SOUTHWEST
SCALE H 1:250 V 1:125



BRUNETTE AVE.
CURB RETURN – SOUTHEAST
SCALE H 1:250 V 1:125

0 10m H 1:250 V 1:125
DISCLAIMER:
This drawing must not be reproduced without the written permission of R.F. Binnie & Associates Ltd.
This drawing is not to be used for construction unless it is stamped "ISSUED FOR CONSTRUCTION" and signed by R.F. Binnie & Associates Ltd. It is the contractor's responsibility to ensure that he is in possession of the latest revision of this drawing.

Edge of pavement	Hydrant	Sanitary service	Hydro Guy Wire
Watermain and valve	Water air valve	Sanitary cleanout	Hydro Kiosk
Drainage sewer, MH	Water blowoff	Utility pole (joint pole)	Vegetation Canister
Drainage ditch	Water service	Utility pole with light	Vegetation Deciduous
Sanitary sewer, MH	Catch basin, top inlet	Streetlight, dovil	Vegetation Shrub
Sanitary force main	Catch basin, side inlet	Streetlight, post top	Survey Traverse Hub
Gas main and valve	Catch basin, round	Comb signal pole	Survey Iron Pin
Hydro duct, MH	Drainage service	Traffic signal pole	Survey Lead Plug
Telephone duct, MH	Drainage cleanout	Junction box	Survey Monument

No.	Date	By	Revisions
3	2021-12-03	KDD	ISSUED FOR TENDER
2	2021-08-10	KD	100% DESIGN SUBMISSION
1	2021-07-14	KD	90% DESIGN SUBMISSION

Design by	Date
KD	
Drawn by	Date
LY	
Checked by	Date
VL	
Approved by	Date
TDB	

BINNIE
The people behind your infrastructure.
TEL 604 420 1721 **BINNIE**.com

Coquitlam
Engineering & Public Works
3000 Guildford Way, Coquitlam, B.C. V3B 7N2

Scale
horiz. 1:250
Sheet 02 of 02
Eng. Project No. 20-1027

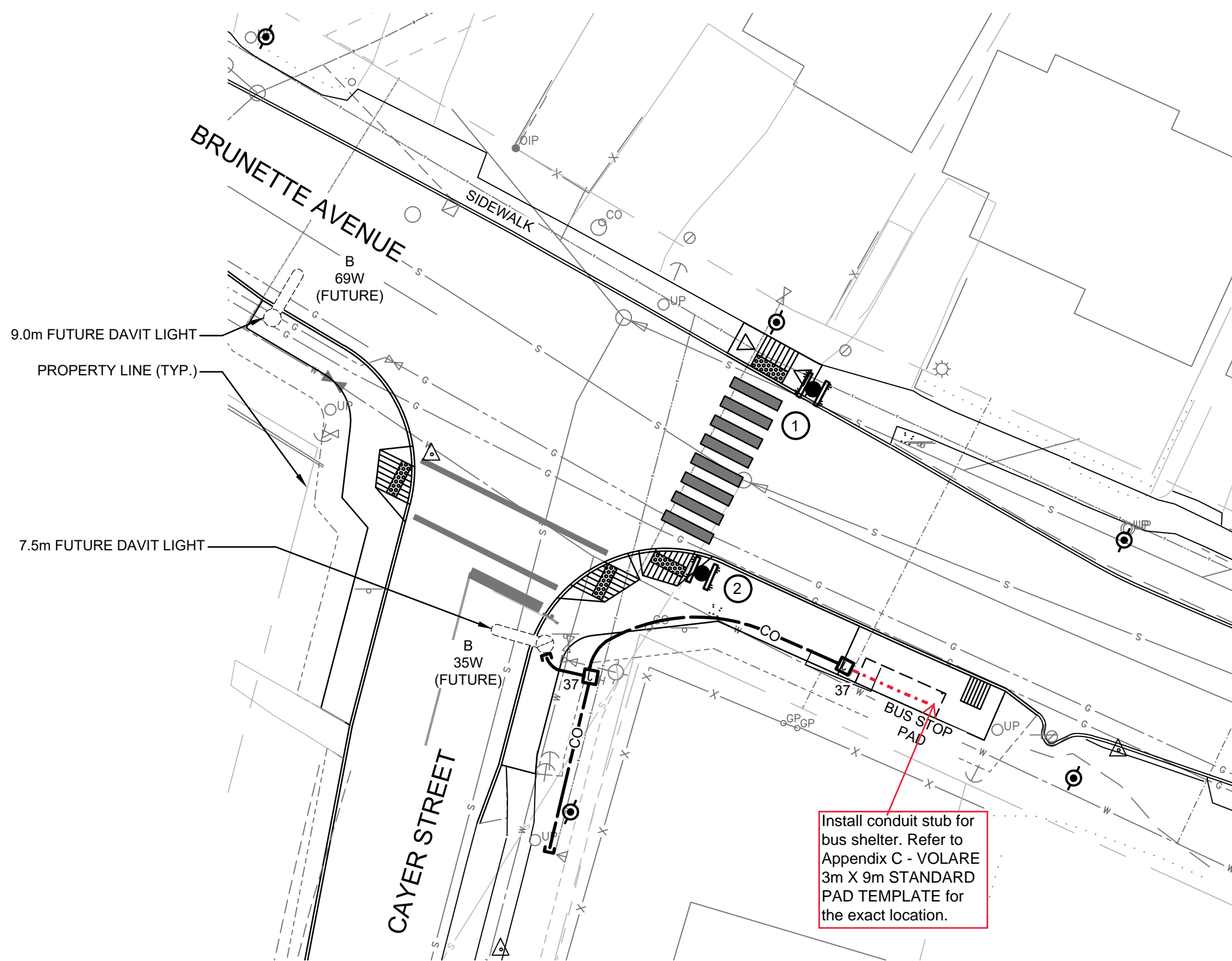
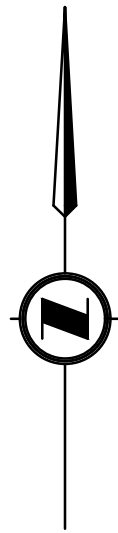
Scale
vert. 1:125
of 02

Project
**BRUNETTE AVE
AT CAYER ST**

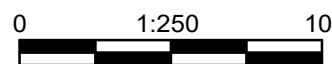
Description
ROADWORKS - PLAN

File: 20-1027-6-R2

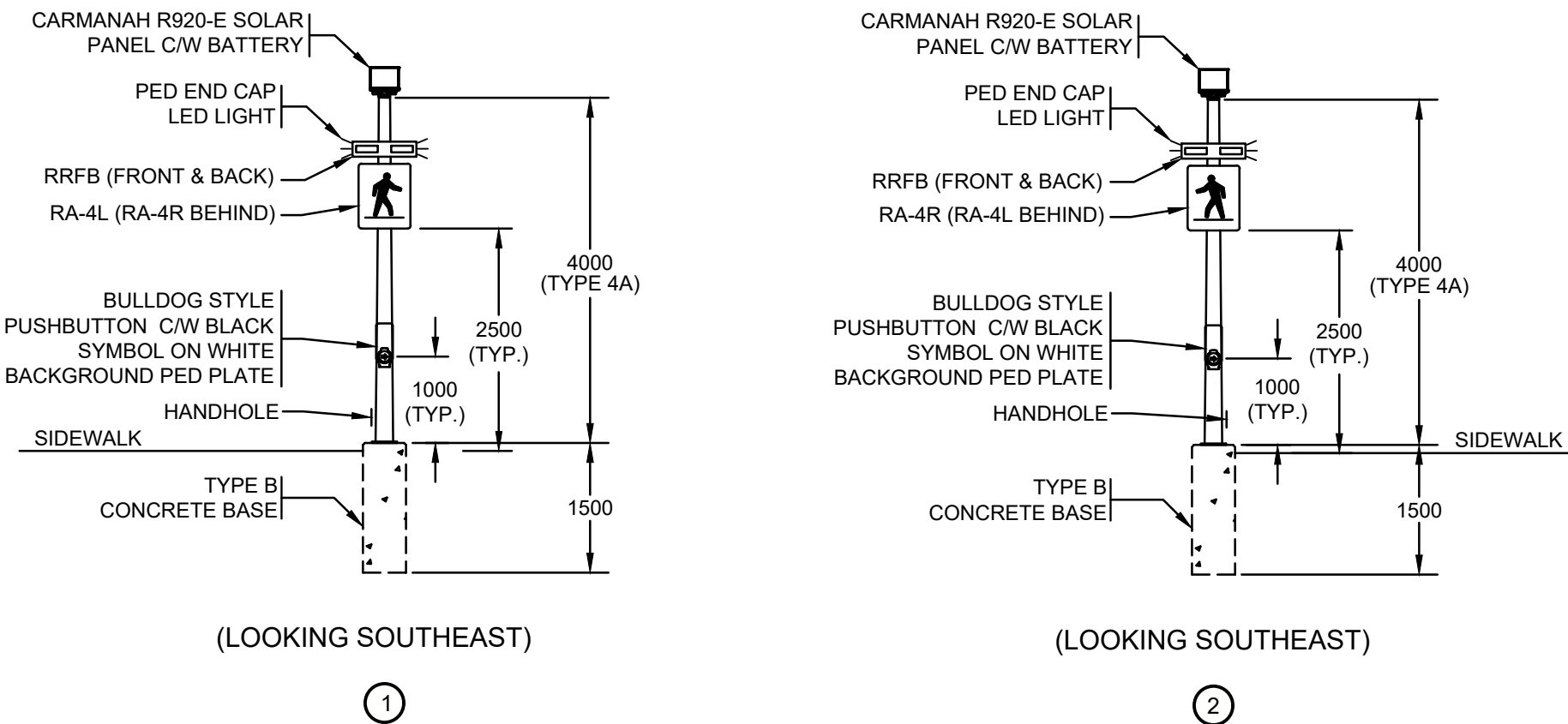
REV. 3



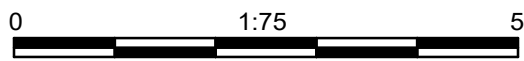
SITE PLAN



ORIENT SOLAR PANELS
TO SOUTH FACING FOR
OPTIMAL EFFICIENCY



SITE PLAN



NOTES:

- UNLESS OTHERWISE INDICATED, ALL WORK SHALL BE DONE IN ACCORDANCE WITH THE MMCD 2009 PLATINUM EDITION AND THAT OF THE CITY OF COQUITLAM CURRENT SUBDIVISION CONTROL BYLAW AND MUST PASS THEIR INSPECTIONS. PLEASE CONTACT THE PROJECT COORDINATOR 72 HOURS PRIOR TO COMMENCING CONSTRUCTION.
- CHECK BEFORE YOU DIG. THE CONTRACTOR SHALL REFER TO CIVIL "AS-BUILT" DRAWINGS FOR ALL UTILITIES, SERVICE LOCATIONS AND DETAILS. THE EXACT LOCATION OF THESE UTILITIES SHALL BE DETERMINED ON SITE.
- PRIOR TO RRFB POLE BASE INSTALLATIONS, THE CONTRACTOR SHALL ENSURE THAT ALL POLES SHALL BE A MINIMUM OF 2.0m CLEAR OF ALL HYDRO POLES AND 3.0m CLEAR OF OVERHEAD PRIMARY WIRES, AND 1m CLEAR OF ALL OVERHEAD SECONDARY WIRES.
- THE CONTRACTOR SHALL NOTIFY PROVINCIAL AND MUNICIPAL INSPECTORS 24 HOURS PRIOR TO COMMENCEMENT OF UNDER GROUND AND ELECTRICAL WORK.
- THE CONTRACTOR SHALL OBTAIN ALL EQUIPMENT APPROVAL PERMITS FROM THE ELECTRICAL SAFETY BRANCH. THE ELECTRICAL SAFETY BRANCH SHALL BE MADE AWARE OF THE (POSSIBLE) USE OF AN IRRIGATION SYSTEM WITHIN THE STREET LIGHT POLES.
- MINIMUM DEPTH FOR UNDER GROUND DUCTING SHALL BE 600mm BELOW BOULEVARD AND SIDEWALKS AND 900mm BENEATH ASPHALT, AND AS PER COQUITLAM STANDARD DRAWING E-5.
- ALL POLES, ARMS, SERVICE BASES, ETC., ARE TO BE HOT DIP GALVANIZED, PRIMED AND POWDER COATED "COQUITLAM GREEN" RAL 6028 IN COLOUR.
- BONDING (GROUNDING) BOLT/BOLT-HOLE AREA INSIDE POLE TO BE MASKED BEFORE POWDER COATING TO LEAVE CLEAN GALVANIZED SURFACE FOR GOOD ELECTRICAL CONDUCTIVITY (OR REMOVE POWDER COATING IN THIS AREA AFTERWARDS)
- ALL POLE HAND HOLE ACCESS SHALL BE GALVANIZED CAST STEEL COVER WITH REINFORCED BACKING PLATE. HAND HOLE SHALL UTILIZE NOVA POLE TAMPER PROOF FLOWER BOLT HEAD C/W REINFORCED TAMPER PROOF GALVANIZED BACKING BAR WITH TRANSVERSE ORIENTATION & LEFT HANDED THREAD.
- EACH LUMINAIRE SHALL BE WIRED WITH No. 12 RW90, BLACK AND WHITE FOR 120V SERVICE, BLACK AND RED FOR 240V SERVICE.
- EACH STREET LIGHT LUMINAIRE SHALL BE PROVIDED WITH TRON-HEBB-AA WATER PROOF FUSE HOLDER(S), C/W 2 TYPE "L" INSULATING BOOTS, OR APPROVED EQUIVALENT. EACH FUSE HOLDER SHALL BE PROVIDED WITH A 10-A BUSS KTK-TYPE FUSE, WIRED IN LIVE CONDUCTORS(S) FOR 240V SERVICES. ONE FUSE SHALL BE PROVIDED FOR EACH LIVE CONDUCTOR. THE FUSE HOLDER(S) SHALL BE ACCESSIBLE FROM THE HAND HOLE ACCESS AT THE POLE BASE.
- ALL LUMINAIRES SHALL BE BONDED WITH A NUMBER 12 RW90 CONDUCTOR (GREEN). THE CONTRACTOR SHALL SUPPLY A PIGTAIL SPLICE WITH A RING LUG TERMINAL FOR THE BOND STUD.
- THE BONDING STUD IN EACH POLE SHALL COMPRISE OF ONE 3/8-16 BOLT, 2.0 INCHES LONG, ONE SPLIT LOCK WASHER, AND TWO HEX NUTS. THE SPLIT LOCK-WASHER SHALL BE SLID ONTO THE BOLT ON THE INSIDE OF THE POLE, AND HELD TIGHTLY IN PLACE WITH THE FIRST NUT. THIS NUT SHALL BE TIGHTENED TO SPECIFICATION. THE RING TERMINAL SHALL BE SANDWICHED BETWEEN THE TWO HEX NUTS. THE LAST NUT HOLDS THE RING TERMINAL IN PLACE. THIS NUT SHALL BE TIGHTENED TO SPECIFICATIONS. THE POLE MANUFACTURER/CONTRACTOR SHALL ENSURE THE AREA AROUND THE BONDING NUT ON THE INSIDE OF THE POLE IS PAINT FREE TO OBTAIN A SOLID MECHANICAL AND ELECTRICAL BOND CONNECTION.
- ALL POLES SHALL BE BONDED WITH A No. 8 RW90 CONDUCTOR (GREEN). THE CONTRACTOR SHALL SUPPLY A PIGTAIL SPLICE WITH RING LUG TERMINAL FOR BOND STUD.
- ALL UNDERGROUND AND IN-POLE SPLICES SHALL BE FULLY SEALED WITH TAPE CONSISTING OF BISHOP BI-SEAL, PHILLIPS ROTUNDRAS OR 3M SELF-HOLDING TAPE; COVERED WITH PVC TAPE AND DIPPED IN 3M SCOTCHCOAT, OR APPROVED EQUIVALENT.
- EMPTY CONDUITS / CONDUITS ONLY (CO) SHALL BE PROVIDED WITH A NYLON PULL LINE, AND EACH END SHALL BE CAPPED.
- STANDING WATER IS NOT PERMITTED IN CONDUITS. CONDUITS WITH WATER SHALL BE BLOWN CLEAR OF WATER.
- ALL CONDUCTORS SHALL BE STRANDED, COPPER, RW90 SIZES PER PLANS.
- STREET LIGHT POLES SHALL BE WIRED PER MMCD 2009 PLATINUM EDITION PLAN E7.11.
- ALL CONCRETE BASES SHALL HAVE A V-GROOVE TO DRAIN WATER. ENSURE THE V-GROOVE IS FREE OF CONCRETE SLAG.
- ALL CONCRETE BASES SHALL BE LEVEL ON 2 AXIS.

THIS DRAWING AND ALL RELATED FILES ARE PROPRIETARY TO GNEC. RESPONSIBILITY CANNOT BE ACCEPTED BY GNEC FOR ALTERATION AND/OR DEVIATION FROM THIS DESIGN WITHOUT PRIOR ACCEPTANCE BY GNEC. ALL WORK SHOWN IS TO BE CONDUCTED TO THE SATISFACTION OF THE ENGINEER OF RECORD.

THIS DRAWING IS TO BE READ IN CONJUNCTION WITH ALL OTHER RELEVANT PROJECT DRAWINGS, SPECIFICATIONS, AND DOCUMENTATION. ALL EXISTING CONDITIONS SHOWN ARE TO BE VERIFIED BY THE CONTRACTOR ON SITE, AND ANY DISCREPANCIES REPORTED TO GNEC FOR ADJUSTMENT AND DIRECTION.

FIELD LAYOUT TO BE CONFIRMED WITH ENGINEER PRIOR TO CONSTRUCTION

IN THE EVENT OF ANY UTILITY CONFLICTS THE CONTRACTOR SHALL CONTACT GREAT NORTHERN ENGINEERING AT 1-855-463-2266
3 WORKING DAYS PRIOR TO PLANNED INSTALLATION
TO ARRANGE FOR THE ENGINEER TO HELP RESOLVE ANY CONFLICTS AND PROVIDE DIRECTION



CHECK BEFORE YOU DIG

THE LOCATIONS OF EXISTING UNDERGROUND UTILITIES ARE SHOWN IN AN APPROXIMATE WAY ONLY AND HAVE NOT BEEN INDEPENDENTLY VERIFIED BY THE OWNER OR ITS REPRESENTATIVE. SOME UTILITIES MAY NOT BE SHOWN. THE CONTRACTOR SHALL DETERMINE THE EXISTENCE AND EXACT LOCATION OF ALL EXISTING UTILITIES BEFORE COMMENCING WORK AND AGREES TO BE FULLY RESPONSIBLE FOR ANY AND ALL DAMAGES WHICH OCCUR DUE TO THE CONTRACTOR'S FAILURE TO EXACTLY LOCATE AND PRESERVE ANY AND ALL EXISTING UTILITIES.

NOT FOR CONSTRUCTION

ALL EQUIPMENT IS PROPOSED
EXCEPT WHERE NOTED

EXISTING PROPOSED
Type 4A Pole c/w RRFB Flashers and Pedestrian signs
35mm RPVC Empty Conduit
Stub out & Run 35mm RPVC for Future Extension
(cap conduit leave pull string inside conduit)

EXISTING PROPOSED
BC Hydro Pole c/w Rental Luminaire
BC Hydro Pole
Luminaire on Red or Black Phase Conductor
Junction Box (Type as noted on plan)

No.	Date	By	Revisions
2	21-12-02	KH	ISSUED FOR TENDER
1	21-08-27	KH	DESIGN CHANGE TO SIDE MOUNTED RRFB
0	21-05-13	KH	FIRST SUBMISSION

Design by KH
Drawn by KH
Checked by SF
Approved by SF

GNEC PROJ NO. 21BC-0030
Great Northern Engineering Consultants
202 - 8525 Baxter Place
Burnaby, BC V5A 4V7
Phone: 1-855-463-2266
www.gnec.ca

ACCEPTED FOR
CONSTRUCTION
Date: _____
Manager of
Development Servicing

Coquitlam

Engineering & Public Works
3000 Guildford Way, Coquitlam, B.C. V3B 7N2

Scale
horiz. Scale
vert.
Sheet of 1 of 1
Eng. Project No. TBD

Project

BRUNETTE AVENUE AT
CAYER STREET - RRFB

Description

RRFB - SITE PLAN AND DETAILS

File: 21BC-0030 - Coquitlam - Cayer St RRFB

EGBC Permit # 1001946
Association of Professional
Engineers and Geoscientists
of the Province of British Columbia
S. FAIZ
PROFESSIONAL
LICENSEE
BRANDERHAWK
License 33332