



A Plan for City Centre



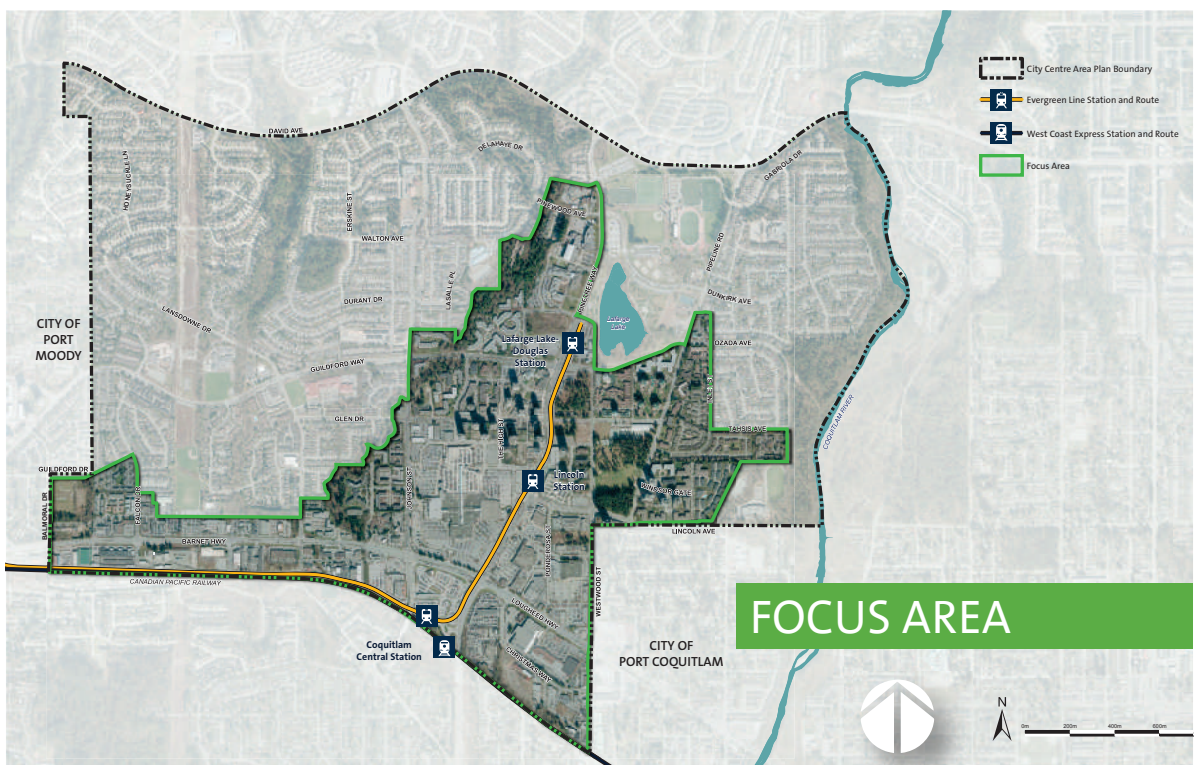
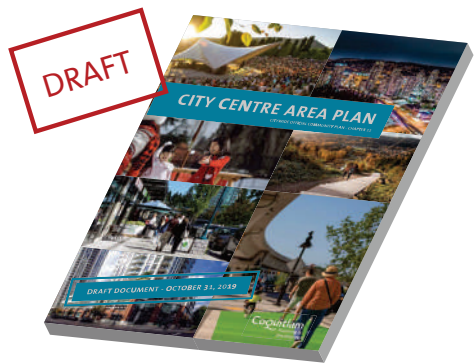
Welcome

At today's Community Information Session, you can:

- Share your ideas on the future of City Centre.
- Provide feedback on the draft Plan for City Centre.

Your Feedback is Important to us

The City of Coquitlam is planning the future of City Centre, and we want to hear your thoughts on the draft Plan. Please take a moment to review the information on these information panels and to fill out the survey. Staff is available to answer any questions.



The City Centre Area Plan covers a large area of about 725 hectares (1800 acres). To support Transit-Oriented Development and capitalize on the investment of the Evergreen Line/SkyTrain extension, the draft City Centre Area Plan directs change and new development to lands within walking distance of the Coquitlam Central, Lincoln and Lafarge Lake-Douglas SkyTrain stations. The neighbourhoods surrounding the SkyTrain stations will continue to play an important role in City Centre through the provision of their existing housing.





A Plan for City Centre



A Downtown in the Making: City Centre's Past, Present & Future

City Centre has seen many changes to meet the community's needs over the past several decades. The draft Plan builds on our past successes, and today's Community Information Session is a chance for us to continue the conversation about what's next for our downtown.

1978

Lafarge donates land to the City to build a lake



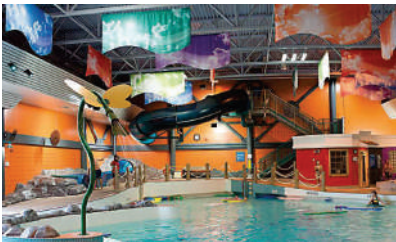
1979

Coquitlam Centre opens on August 15



1993

City Centre Aquatic Complex opens



1996

Evergreen Cultural Centre opens



1996

Douglas College opens



1997

Pinetree Community Centre opens



1998

City Hall moves from Maillardville to City Centre



2008

Glen Pine Pavilion opens and City Centre Area Plan is updated and adopted



2010

Spirit Square opens



2012

Decision to fund Lincoln Station from development through P3 partnership



2013

Coquitlam Public Library re-opens in City Centre



2016

Town Centre Park Plaza opens on Canada Day
Millennium Line Evergreen Extension opens in December





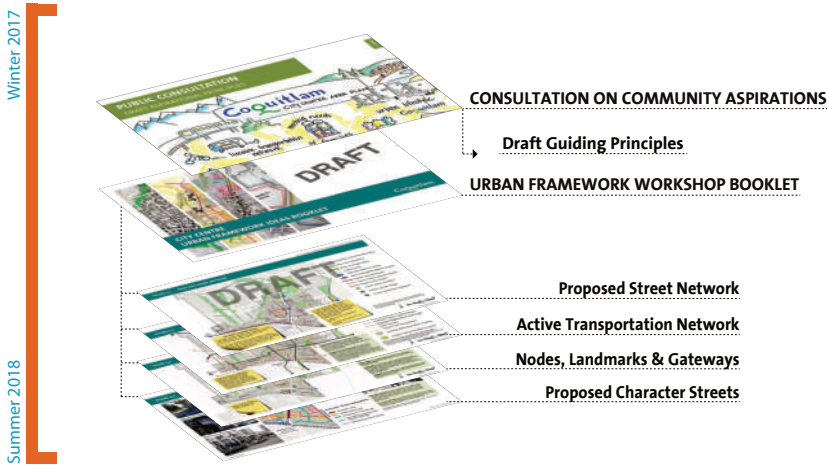
A Plan for City Centre



Planning Process

The current City Centre Area Plan dates back to 2008. An update of the Plan has been undertaken over two phases that include a series of steps involving considerable community input and technical analyses. The outcome of this work is a 'blueprint' to evolve City Centre from a suburban to an urban regional downtown over the next 25 years.

PHASE 1 RE-DISCOVERING CITY CENTRE



PHASE 2 SHAPING THE FUTURE OF CITY CENTRE





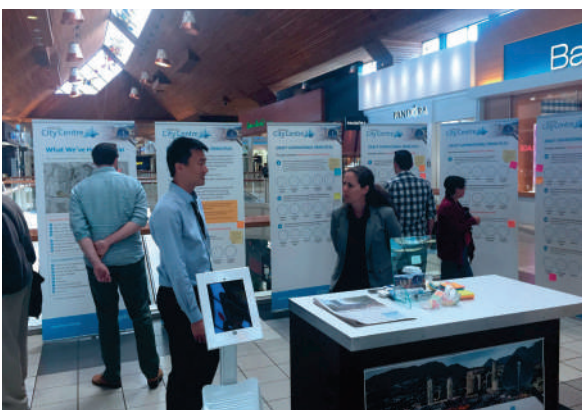
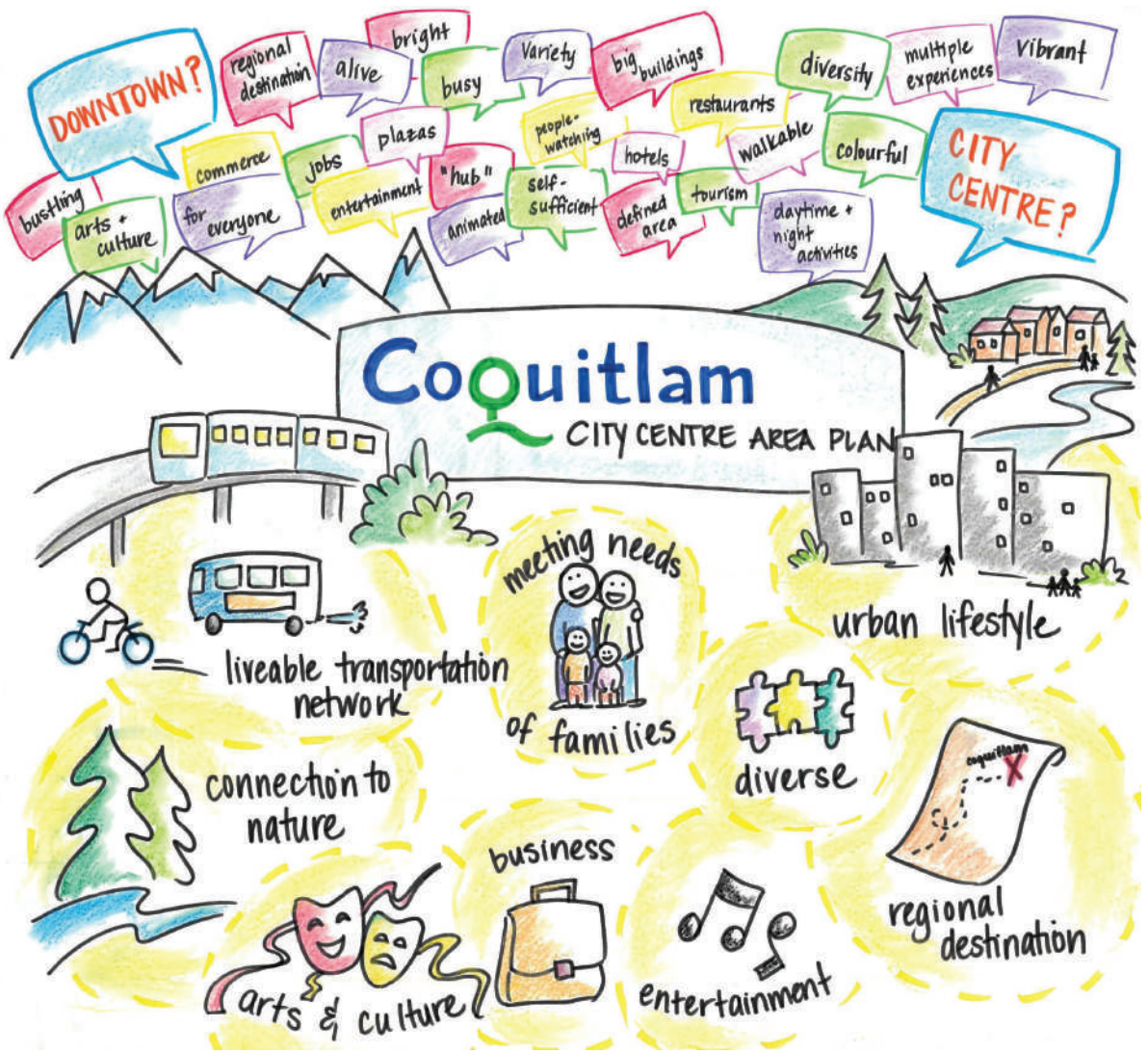
A Plan for City Centre



What We've Heard

Through community feedback received from online surveys, pop up kiosks, and community meetings and workshops, we heard that City Centre should include:

- More entertainment options
- A wider range of restaurants and pubs
- A greater variety of shops and stores
- More family friendly activities
- More job opportunities
- A range of housing choices
- Pedestrian, cycle and transit friendly infrastructure





A Plan for City Centre



Transit-Oriented Development

Transit-Oriented Development (TOD) is a pedestrian-friendly, compact, mixed-use form of development centered on rapid-transit. Concentrating development near SkyTrain makes transit a viable travel choice for more residents, workers and visitors.

The following TOD characteristics are integrated throughout the draft Plan:



Major **destinations** and centres located along direct corridors making them easy to be served efficiently by rapid transit.



Higher residential and employment **densities**.



Rich **diversity** of land uses and housing types.



Walking **distance** to rapid transit is minimized by a finer grained street network.



Transportation **demand** management measures that encourage walking, cycling and public transit use.



Pedestrian friendly urban **design** including safe, comfortable and direct walking and cycling connections.





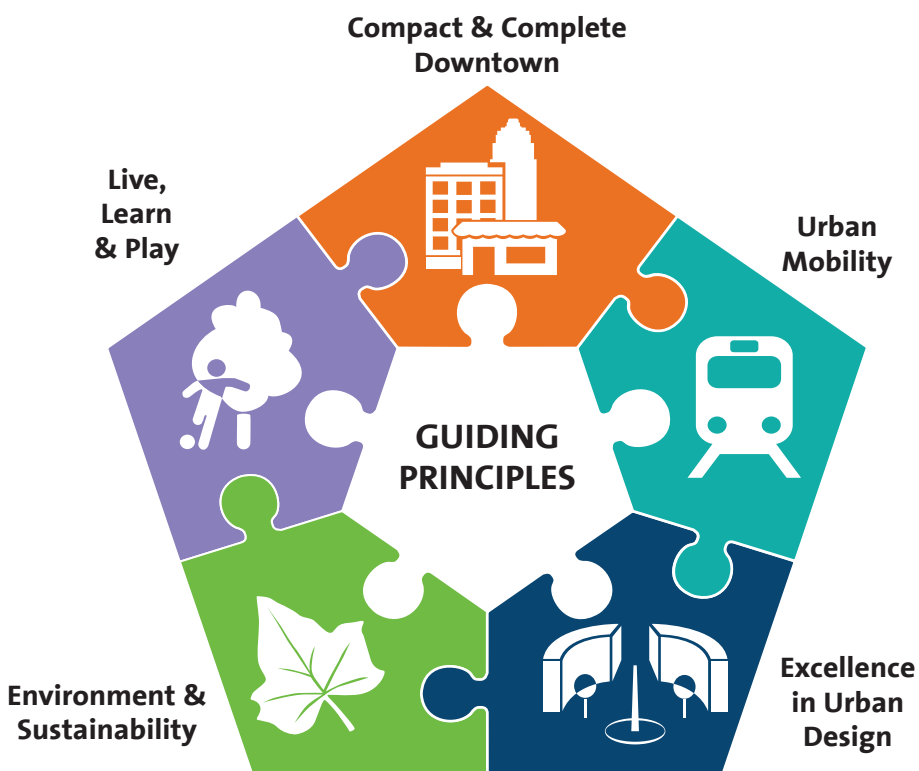
A Plan for City Centre



Guiding Principles

A series of Guiding Principles have been developed based on 'What We've Heard' from Tri-Cities residents, the business community, property owners, Council Advisory Committees and other community stakeholders on how City Centre should transform over time.

The Guiding Principles form the foundation of the Draft Plan and will work to transform City Centre into a vibrant downtown.



Compact & Complete Downtown



- Strengthen City Centre as the downtown of Coquitlam and the north east region of Metro Vancouver.
- Design City Centre as a compact and complete community.
- Strengthen City Centre as a place with a strong, diverse, and resilient local economy.
- Increase entertainment, dining, and shopping options in City Centre.

Urban Mobility



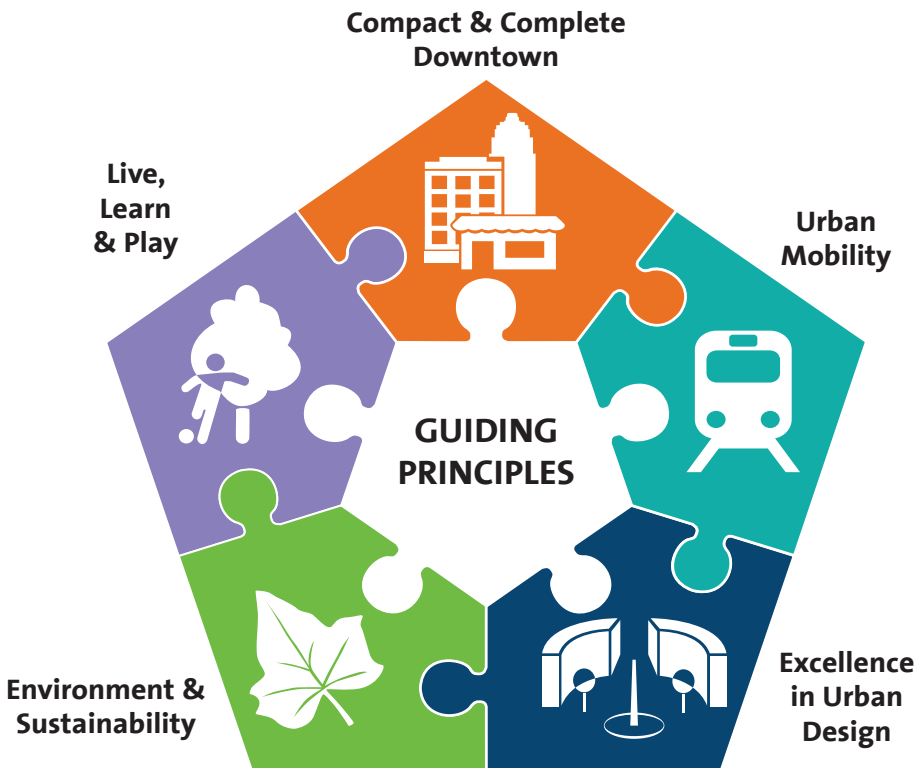
- Design City Centre as a pedestrian-friendly and accessible place for people of all ages and abilities.
- Provide safe, comfortable, and convenient travel for people using all forms of transportation (walk, cycle, drive, transit, & shared, on-demand services).
- Manage parking in City Centre to balance supply and demand.



A Plan for City Centre



Guiding Principles



Excellence in Urban Design



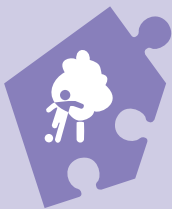
- Promote high quality urban design.
- Create distinct entryways, neighbourhoods and districts.
- Celebrate local art, culture and creativity.

Environment & Sustainability



- Respect natural areas by incorporating environmentally sensitive design.
- Support climate resilience, energy management and greenhouse gas (GHG) reduction.
- Provide a safe, healthy and natural living environment.

Live, Learn & Play



- Develop City Centre as a family-friendly place.
- Develop City Centre as a hub of diverse activity that supports an active lifestyle through opportunities for sports and recreation.
- Expand public facilities and community amenities in City Centre to serve local needs, accommodate growth, and create attractive destinations.
- Improve access to nature in City Centre.