

## Schedule K

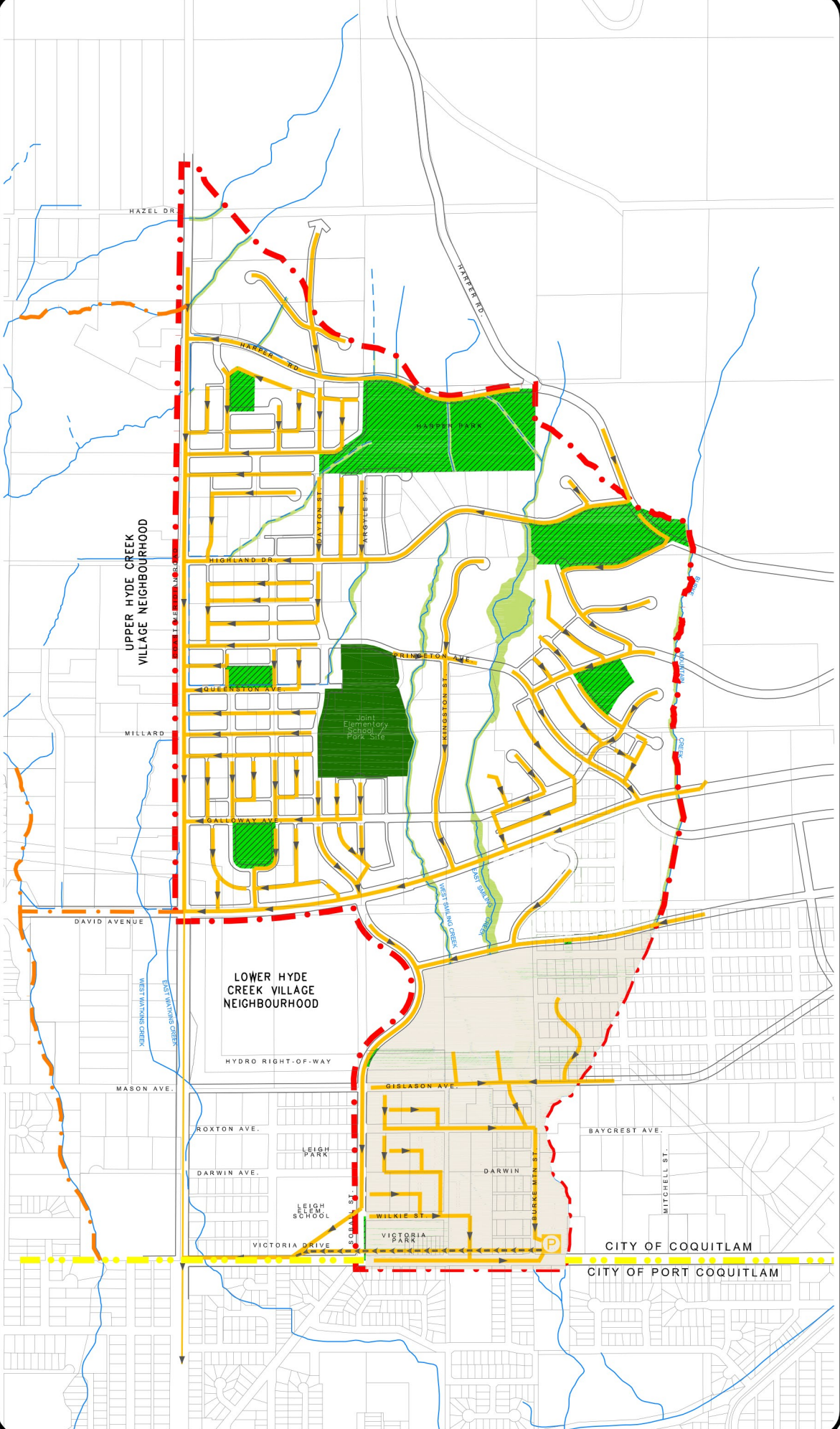
### SANITARY SEWER SERVICING CONCEPT PLAN

#### LEGEND

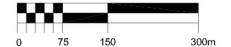
- - - Neighbourhood Plan Boundaries
- - - Upper and Lower Hyde Creek Village Neighbourhood Plan Boundaries
- - - Municipal Boundary
- Joint School / Park Site
- Neighbourhood Parks & Natural Open Space
- Environmentally Sensitive Areas
- Street Oriented Village Homes or Joint Middle School / Park Site
- Existing Sanitary Sewers
- Proposed Sanitary Sewers
- - - Proposed Sanitary Forcemain
- P Proposed Sanitary Pump Station
- Pumped Sanitary Zone

#### Information Notes:

- 1 Local roads, lanes and servicing are illustrative, as final subdivision layout is subject to review by the City's Approving Officer.
- 2 Riparian areas along watercourses shall be protected in accordance with standards which Council may approve by bylaw and through any necessary authorization by senior levels of government.



SCALE 1:12500



SMILING CREEK  
NEIGHBOURHOOD PLAN  
COQUITLAM BC

Adoption Date: July 31, 2006  
Amended: July 27, 2015