

Schedule G

TRANSIT NETWORK PLAN

LEGEND

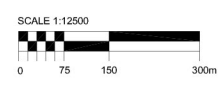
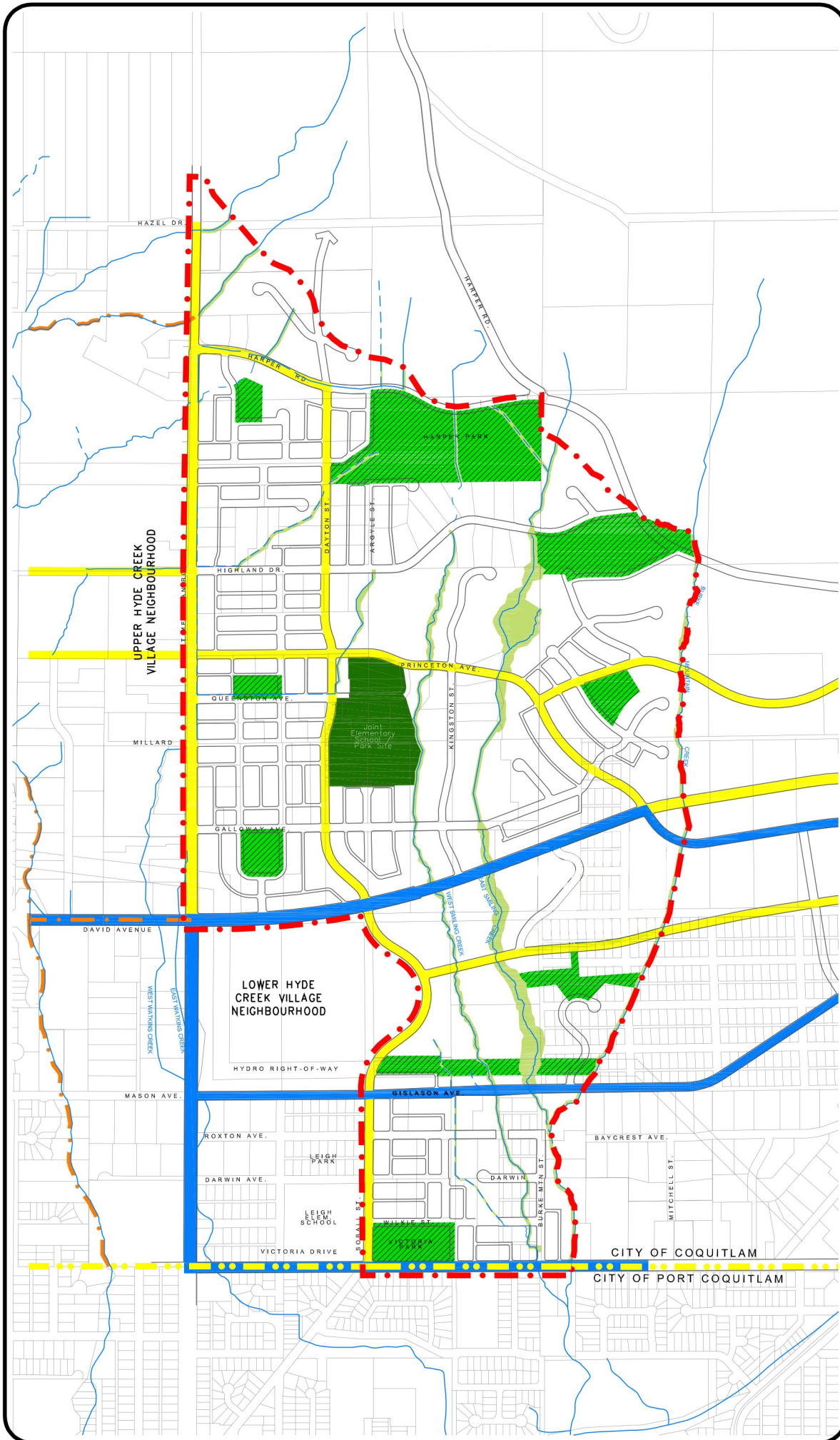
- - - Neighbourhood Plan Boundaries
- - - Upper and Lower Hyde Creek Village Neighbourhood Plan Boundaries
- - - Municipal Boundary
- Joint School / Park Site
- Neighbourhood Parks & Natural Open Space
- Environmentally Sensitive Areas
- Street Oriented Village Homes or Joint Middle School / Park Site

Transit Plan:

- Primary Transit Corridor
- Potential Transit Roadway

Information Notes:

- 1 Local roads, lanes and servicing are illustrative, as final subdivision layout is subject to review by the City's Approving Officer.
- 2 Final bus transit routing is subject to approval by TransLink.
- 3 Riparian areas along watercourses shall be protected in accordance with standards which Council may approve by bylaw and through any necessary authorization by senior levels of government.



SMILING CREEK
NEIGHBOURHOOD PLAN
C O Q U I T L A M B C

Adoption Date: July 31, 2006
Amended: July 27, 2015