

Schedule I

PARKING PLAN

LEGEND

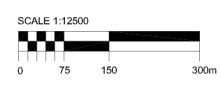
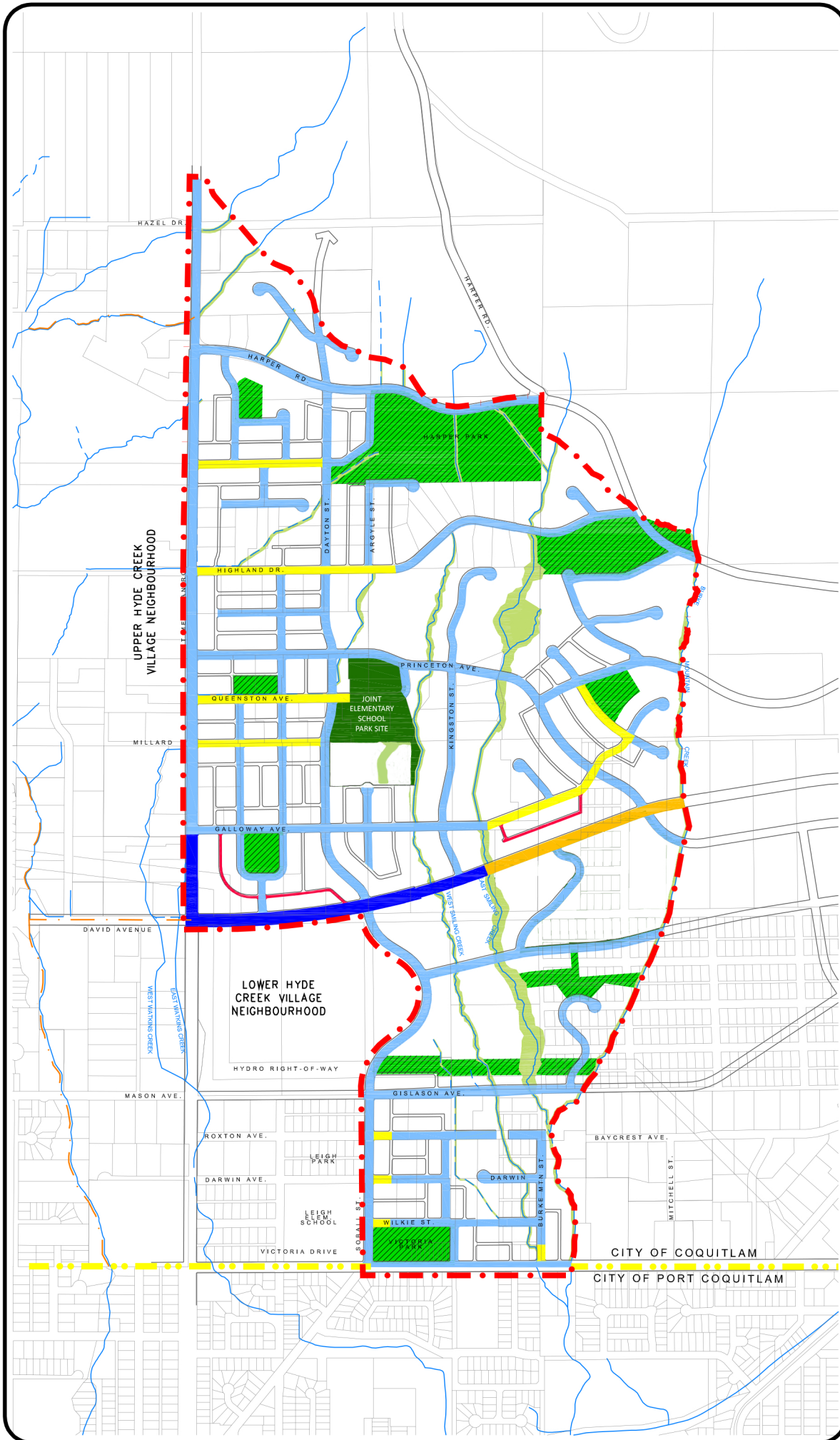
- - - Neighbourhood Plan Boundaries
- - - Upper and Lower Hyde Creek Village Neighbourhood Plan Boundaries
- - - Municipal Boundary
- Joint School / Park Site
- Neighbourhood Parks & Natural Open Space
- Environmentally Sensitive Areas
- Street Oriented Village Homes or Joint Middle School / Park Site

Parking Plan:

- Parking permitted on both sides
- Parking may be restricted to one side, at the discretion of the City
- No parking on either side at any time
- Parking on one or both sides may be permitted (with potential time restrictions)
- Additional parking may be required in the rear lane as described under Section 4.1.6 of the Smiling Creek Neighbourhood Plan

Information Notes:

- 1 Local roads, lanes and servicing are illustrative, as final subdivision layout is subject to review by the City's Approving Officer.
- 2 Parking will be permitted on both sides of rear lanes at the discretion of the City.
- 3 On-street parking supply must be reviewed and a detailed plan prepared where Green Streets are proposed.
- 4 Riparian areas along watercourses shall be protected in accordance with standards which Council may approve by bylaw and through any necessary authorization by senior levels of government.



SMILING CREEK
NEIGHBOURHOOD PLAN
C O Q U I T L A M B C

Adoption Date: July 31, 2006
Amended: June 17, 2024